



# ALUMINUM GRAIN BODIES



Got Grain To Move? Considering A New Body To Move It? Why Not Check Out The Features Of An Eby "Built To Last" Grain Body. Then You Be The Judge. I Think You'll Agree With Hundreds Of Other Satisfied Owners, An Eby Body Is Not Just A Purchase, It's An Investment!

**CHECK OUR FEATURES:**

- **Weight -** 20-30% less than steel and wood construction
- **Maintenance -** aluminum construction won't rust, requires no painting
- **Durability -** built "Eby tough", heavy structurals, new aerodynamic side posts and aluminum floor and sides.

*Built By The People Who Have Years Of Experience Building Aluminum Trailers And Bodies.*

**M.H. EBY, INC.**

Box 127, Blue Ball, PA 17506 (717) 354-4971

## (2) ALUMINUM DUMP BODIES

For Tri-Axle Truck,  
16' Long

Call Zook Molasses Co.  
800-662-7464

WANTED: Any used dump bodies, any size you have. 717-273-7269 anytime.

### 1964 CHEVY HAY TRUCK

Rebuilt engine & transmission. Runs very good. \$985. Call evenings.  
**215-593-2689**

UTILITY TRAILERS: 15" wheels, 2" ball hitch, fenders, 2" pine flooring, lights, 4000# rating: 4x8 tilt bed, \$625; 5x8; 5x10; 6 1/2x10 tilt bed, \$650. 215-346-7340.

**ALUMINUM SHEET SPECIAL**  
1/8"x5'x12'  
FOR DUMP TRAILERS AND DUMP TRUCKS  
Ph: 717-462-0979  
717-462-2946

# LANCASTER Dodge 6.8%

## \$1000\* TRUCK DISCOUNT



Luxury Trucks  
Work Trucks

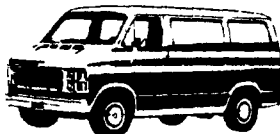


D-50 7.9% IN STOCK  
**IN STOCK STAKE BODY**

5/50 Protection Plan  
D100-350/W150-250



5/50 Protection Plan  
**RAMCHARGER**  
4x4 - 4x2



5/50 Protection Plan  
**ROYAL WAGON**  
5-15 Passenger



IN STOCK KARY VAN II  
5/50 Protection Plan  
**CARGO VANS**

7.9% Up To 48 Mos. 6.8% Up To 60 Mos.  
On Qualifying Vehicles

**100% FINANCING - NO MONEY DOWN**

• SERVICE • PARTS • LEASING  
1475 MANHEIM PIKE, LANCASTER  
Opposite Park City Mall Entrance on Rt. 72

**393-0625**

### 36 REAL ESTATE

10 acres mostly wooded with cleared building site, road frontage. Asking \$12,000. Wellsboro, PA. 717-724-4904.

125 Acres, Goodyear, PA. Approx. 60 acres cleared, balance woodland, joining State Game Lands. Off Rt. 34, mountain stream, owner financing. 717-677-8114.

17.8 acres in Tioga Co. Wooded and open. Nice camp location, \$12,000. 717-537-2269.

4 Lots, Mifflin Co. Total acreage 16+, 2 wooded, 1 partial woods. Near Juniata River. Great view. 215-459-2135.

50-150 acres, \$1,200/acre, mostly tillable, barn available, stream frontage, considerable road frontage. Biglerville area, Adams Co. Also 4 tracts of 10 acres each, buy one for \$13,900 or all four for \$12,900 each. Between Gettysburg and York Springs, Adams Co. Owner, 717-528-8282 or 528-4065.

Mark VII - Pickups - Broncos - Bronco II - Stake Body - Crew Cab -

# SHEEHY FORD LINCOLN MERCURY INC.

For All Your Farming Transportation Needs Through The F800 Series

BRONCOS DIESEL PICKUPS CHASSIS CAB CARGO VANS 4x4 RANGERS PICKUPS  
BRONCO II SUPER CAB CREW CAB STAKE BODY BOX VANS XLT CUSTOM VANS

**SHEEHY HOTLINE 717-272-7671**

Unless This Emblem Is On Your Car Or Truck You Probably Paid Too Much



9-9 Daily  
9-5 Sat.

# SHEEHY LEBANON

Parts Dept. Open  
Daily 8-5  
Sat. 8-12

20th & Cumberland St., Lebanon

**SHEEHY'S FIRST SPECIAL DEMO SALE ON ALL CARS AND TRUCKS**

**6.9%**

**ON RANGER FOR 36 MOS.**

**7.9%\***  
Escort Bronco II  
Tempo F150  
Mustang F250  
T-Bird Lynx

**9.9%\***  
Cargo Van  
Club Wagon  
Bronco  
F-350

\*36 Mos. Check Our Low Rates For Longer Periods.

**APRIL DOOR PRIZES**

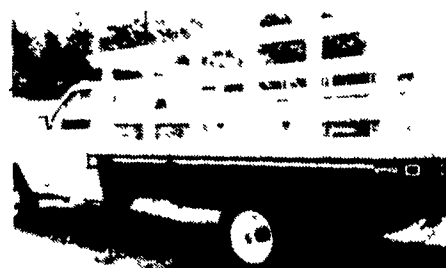
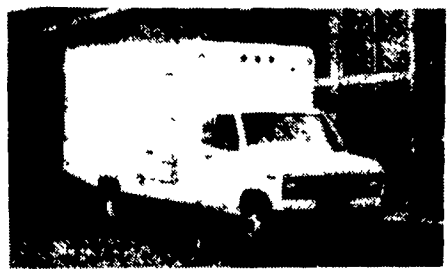
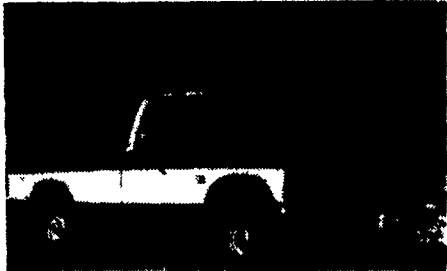
Win A

New Lawn Mower  
New Weed Wacker  
Wheel Barrow Full of Surprises

Discount On All Parts  
WITH THIS COUPON

**10%**

Good For One Purchase Per Customer



Tempo - Cougar - Continental - Town Car - 4x4 - Box Van - Rangers -

Custom Vans - XLT - Grand Marquis - Marquis -

Lynx - Topaz - Diesel Pickups - Mustang - T Bird