

**Keister's Hay & Straw**

Keister's Middleburg Auction  
Tuesday, Apr. 22  
Report supplied by auction  
47 loads. Alfalfa, 75.00-80.00;  
Mixed Hay, 42.50-90.00; Straw,  
41.00-60.00; Ear Corn, 62.50-75.00;  
Oats, 1.20-1.30 bu.

**Westminster Hay**  
April 22, 1986

23 Loads.  
Alfalfa - Good 54.00-91.00; fair,  
40.00-50.00. Timothy, 45.00-68.00,  
Timothy Mixed, 47.00-61.00; or .55-  
.95/bale. Grass - 47.00, Wheat  
Straw 70 cents/bale. Oat Straw 53  
or 1.05/bale.

**Carroll Co. Hay**

Westminster, Md.  
Tuesday, April 22, 1986  
Report supplied by auction  
23 loads.

Alfalfa, fair to good 40.00-50.00,  
good 54.00-61.00, very good 67.00-  
91.00 - 1.10 bale; Timothy 45.00-  
68.00; Alfalfa mix .85 bale; Clover  
and Timothy 55.00-95.00; Alfalfa  
and Timothy 57.00-61.00; Grass  
mix 47.00.  
Wheat Straw .70 bale; Oats  
Straw 53.00 ton, 1.05 bale.

**Belleville Hay**

Belleville, PA  
Wednesday, April 23  
Report supplied by Auction  
63 loads Hay. Alfalfa, 57.50-  
135.00; Mixed Hay, 40.00-87.50; 8  
loads Straw, 57.50-85.00; Oats, 1.30  
bu.; Corn Fodder, 42.50.

**King's Auction**

Kirkwood, Pa.  
Tuesday, Apr. 22, 1986  
Report supplied by auction  
55 loads.  
Alfalfa, 49.00-118.00; Alfalfa  
Mixed, 55.00-105.00; Mixed Hay,  
55.00-102.00, a few lower to 41.00;  
Timothy and Timothy Mixed,  
50.00-94.00.  
Clover and Clover Mixed, 49.00-  
80.00; Grass and Mixed, 46.00-  
62.00; 9 lds. Straw, 66.00-77.00.

**Green Dragon Hay**

Ephrata, PA  
Friday, April 18  
Report supplied by Auction  
159 loads.  
Mixed Hay, 38.00-111.00;  
Timothy, 60.00-95.00; Alfalfa, 40.00-  
115.00; Orchard Grass, 69.00-80.00;  
Straw, 59.00-82.00.  
Corn, 74.00-81.00; Firewood,  
42.00 ld.; Oats, 1.23 bu., up to 1.75  
bu.

**Chambersburg Hay**

Chambersburg, PA  
Thursday, April 24  
Report supplied by Auction  
13 loads.  
Alfalfa, 75.00-90.00; Mixed Hay,  
57.00-65.00.

**Vintage Hay**

Paradise, PA  
Thursday, April 24, 1986  
Report Supplied by Auction  
26 loads.  
Alfalfa, 32.50-95.00; Mixed Hay,  
62.50-76.00; Grass Hay, 52.00-70.00;  
Timothy, 56.00-80.00; Straw, 54.00-  
87.00.

**New Wilmington Hay**

New Wilmington, PA.  
Friday, April 18, 1986  
Report Supplied by Auction  
60 lds. Hay; 10 lds. Straw.  
Alfalfa 59.00-145.00; Mixed Hay  
39.00-68.00; Timothy 37.50-49.00;  
Clover 49.00-77.50; Rye Grass, 1 at  
57.00.  
Hay 35.00-45.00, few to 25.00; Ear  
Corn 60.00-66.00, a few to 48.00.  
Oats 1.15-1.35 bu., 1 at 1.00.

**Dewart Hay**

Dewart, PA.  
Monday, April 21, 1986  
Report Supplied by Auction  
Hay, 27.00-111.00; Straw, 35.00-  
61.00; Wood, 33.00 ld.

**Good's Hay**

Leola, Pa.  
Wednesday, April 23, 1986  
Report Supplied by Auction  
156 lds.  
Straw 60.00-78.00; Mixed Hay  
60.00-92.00; Alfalfa 71.00-115.00;  
Timothy 51.00-84.00; Corn 72.00-  
80.00; Clover 50.00; Oats 1.25-1.70.

**Dewart Livestock**

Dewart, Pa.  
Monday, Apr. 21  
Report Supplied by PDA  
CATTLE 181. Compared with  
last Monday's market: Slaughter  
cows 25 cents to 1.50 lower; Few  
Low Choice 1100-1150 lbs. slaughter  
steers 51.50-52.25; Few Good 46.25-  
52.00; Few Choice Holsteins 47.50-  
48.25; Few Good 44.25-47.10; Few  
Choice slaughter heifers 48.50-  
51.75; Few Good 45.50-46.75.  
Breaking Utility & Commercial  
slaughter cows 33.50-37.00, Couple  
to 38.25; Cutter & Boning Utility  
32.00-34.50; Canner & Low Cutter  
28.00-32.00. Shells down to 20.00.  
Yield Grade No. 1 950-2020 lbs.

slaughter bulls 40.75-46.00.  
FEEDER CATTLE: Few Large  
Frame #1 400-640 lbs. steers 52.00-  
55.00.

CALVES 182. One Prime Vealer  
at 106.00; Few Choice 81.00-94.00;  
Few Good 65.00-78.00; Standard &  
Good 70-100 lbs. 43.00-49.00; Utility,  
60-75 lbs. 35.00-42.00. FARM  
CALVES: Holstein Bulls 90-130 lbs.  
50.00-90.00, mostly 65.00-80.00.

HOGS 103. Barrows & gilts about  
steady. One Lot US No. 1-2 210 lbs.  
barrows and gilts 39.60; Few Lots  
No. 2-3 225-245 lbs. 36.00-40.10; One  
Lot No. 1-3 180 lbs. at 33.50; US No.  
1-3 300-550 lbs. sows 34.25-38.75.  
BOARS 30.00-33.25.

FEEDER PIGS 191. US No. 1-3  
20-40 lbs. feeder pigs 24.00-30.00 per  
head; No. 1-3 50-70 lbs. 33.00-39.00  
per head.

SHEEP 12. Few High Choice &  
Prime 30-60 lbs. Spring Slaughter  
Lambs 60.00-90.00. Couple  
SLAUGHTER EWES at 22.00.

**HAY & STRAW SALE**

12:00 Noon  
Every Wednesday  
Westend of Avondale  
at the intersection of  
Baltimore Pike and  
Route 41.

Harvey Z. Martin  
215-268-3604  
(Office)  
215-445-5303  
(Residence)

**KING'S AUCTION**

KIRKWOOD  
Hay, Straw and  
Grain Auction  
EVERY TUESDAY  
12:00  
Located Rt 472 5 miles south  
of Quarryville or 6 miles north of  
Oxford at Shaub's Auction  
House  
Lloyd H. Kreider,  
Auctioneer  
AU-000513L  
No out of state checks  
ALL TRUCKERS AND  
FARMERS WELCOME

**HOGS  
CATTLE  
FUTURES  
AND  
OPTIONS**

COMMISSION  
\$50.00

Call for information  
plus our

**FREE  
MARKET LETTER**  
featuring a  
Special Situation  
Suggestion!

SPECIALIZING IN  
COMMODITIES EXCLUSIVELY  
IN PENNSYLVANIA  
CALL  
**(800) 322-9274**

ALL OTHER AREAS  
**(800) 523-9388**

ALLENTOWN  
**(215) 821-8111**  
**Rosenthal &**

**Company**  
2200 Hamilton Street,  
Suite 102,  
Allentown,  
Penna. 18104  
Members of All Principal  
Commodities Exchanges

**Green Dragon  
Livestock Sales**

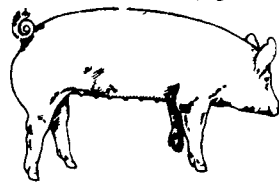
Location: Ephrata RD 4. 1  
mile N. on North State St.,  
Ephrata.

**COWS COWS COWS  
SALE EVERY FRIDAY**

Lots of good Northern Feeder  
& Stockers. Slaughter Cows  
- Bull Steer, Veal-lamb.  
11:00 A.M.-Beef Sale 200-300 each week.  
1:00 P.M.-Dairy Sale.  
7:00 P.M.-Small Animal Sale.

For Special Sales and Herd Dispersals  
on farm or at our barn or other market  
information call: Office 717-733-2444,  
Home 717-838-4318.

**WALTER H. RISSER, Proprietor**  
All out of state and new buyers must have  
cash or certified check or current letter of  
credit from bank.



**EMERY'S  
BUYING  
STATION**

**OPEN TO RECEIVE  
YOUR MARKET HOGS  
AT THE GREEN DRAGON MARKET  
RD 4, EPHRATA, PA 17522  
1 MILE NORTH OF EPHRATA  
ON NORTH STATE STREET.**

**HOURS: MONDAY, TUESDAY, and  
WEDNESDAY 6:00 A.M. to 11:30 A.M.**  
215-458-5677 Residence  
717-733-9648 Office

**YOU ARE PAID FOR YOUR  
HOGS IMMEDIATELY**

Ken & Lois Emery, Proprietors

**MELHORN SALES, SERVICE, TRUCKING CO.**

1010 W. Main St., Mount Joy, PA 17552

The only full service company, in this area, to handle the total  
needs of the poultrymen.

Which Includes:

- DEKALB chicks & started pullets sold by Clay Mumma, Nelson Groff & Harold Mishler.
- Complete loading & unloading of pullets & spent hens.
- New modern dollie equipment to move your pullets fast and efficiently with minimum stress to the pullets

Place Your Confidence In A Full Service Company That Wants  
To Be Worthy Of Your Business

For More Information Phone:  
**717-653-1102 or 717-653-2787**

Monday - Friday 8 A.M. - 4 P.M. ask for Lynn or Wendy

