

# PA farmers advise legislators



PFA members board bus for trip to the State Capital after briefing at Penn Harris Inn, Camp Hill.

(Continued from Page A1)

floriculture (the growing of trees and shrubs). PFA members want the omitted segment of agriculture to be included as was originally intended.

With the continued vulnerability of the poultry and livestock diseases, PFA policy calls for the commitment of increased public funding of animal health research diagnostic and indemnity programs. In addition, they want an animal health commission to be formed. This commission would be given the responsibility to manage funds and carry out the programs outside of the "winds" of political change.

PFA supports the mandatory use of seat belts in passenger vehicles to improve highway traffic safety and wants a mandatory returnable beverage container law to reduce littering along rural highways.

Ag land preservation is strongly supported by PFA, and the farmers want stronger guarantees

that payment to poultry and egg farmers will be made by merchants who buy their products. They want to keep the regulation of pesticide applicators in the ag department.

The ag commodity marketing act of 1968 is under special discussion. Under this act the producers of ag commodities may, through referendums, assess themselves to provide funds for research and promotion of their products. The program worked well for 17 years with apple and dairy products as excellent examples of success.

However, recently legal council rulings would make all these financial transactions subject to approval by the governor and treat all funds collected as public funds. PFA farmers contend that these funds are private funds collected not as public tax but as private promotional funds. The farmers want the 1968 act amended to return to the commodity board some of the autonomy that the administrative ruling would take away.

In light of a significant growing problem of the spread of rabies, PFA supports the concept that all



PFA President Keith Eckel speaks at Legislative Banquet.

dogs in Pennsylvania be vaccinated against the disease and that proof of current vaccination be required for licensing.

After the meeting with senators and representatives in the capital Tuesday afternoon, the farmers hosted the legislatures at a banquet at the Penn Harris Inn. President Eckel was the featured speaker. PFA is a voluntary general farm organization, which provides a voice in governmental activities, marketing programs information and other farm services for more than 23,000 farm families throughout the state of Pennsylvania.

## AUCTIONS

May 3rd — 10:30 a.m. 558 Acres Timberland, In Western Gochland County near Columbia, Ten Tracts, Varying from Land Recently Planted in Pines to Parcels of Mature Sawtimber. Property of Phillip N. Stoneman. Every Tract Includes Attractive Bldg. Sites, Abundantly Well-Watered By Ponds and Streams, including the bold water of Byrd Creek. Long Paved Road Frontage.

May 3rd — 1:00 p.m. Complete Liquidation of all Used Logging Equipment and Farm Machinery (and some New Farm Equipment) GOODMAN TRUCK AND TRACTOR CO., INC. — AMELIA, VA. — Selling 4 Cable Skidders, Grapple Skidder, 3 Knuckleboom Loaders, 3 Skid-Steer Loaders, Bulldozer, 1972 Int. Truck, Mack F600 Tractor, 1964 Int. Dump Truck, Pickup, 5 Tractors (Ferguson 20, Farmall 656D, Int. 504, Satoh "Buck", Int. 4WD,) 4 Combines, Round Baler, Mower/Conditioners, Rake, Harrows, and much more.

May 10th — 10:30 COMPLETE DAIRY DISPERSAL — LAKEWOOD FARM 969 Acres, 7 Tracts from 35 to 340 Acres, Campbell County — Rustburg, Va. (8 Miles South of Lynchburg) A Fantastic Property Including Exquisite Brick Home, Modern Operating Dairy and Acres of Gently Rolling, Attractive Cropland and Woodland, All Surrounding the Beautiful 66 Acre Lake Wood Holstein Herd Sells at 10:30 a.m. — Real Estate at Noon, Dairy Equipment at 1:00 p.m. Followed by Full Line Modern Farm Machinery.

May 14th — 1:00 45 Acres Woodland — Lancaster County, Va. — 3 Tracts from 7 to 22 Acres. Located 3 miles North of Lively on Rt. 3, On the Northern Neck Near the Rappahannock River. Each Tract has over 600 ft. of Road Frontage on Route 3. Trustee's Sale John W. Russell, Substitute Trustee. Terms: 10% Deposit Sale Day, Balance at closing within 30 days.

May 17th — 10:30 Rockbridge Baths Farms — 1084 Acres, 11 Tracts From 8 Acres to 430 Acres (will be offered individually, combinations thereof and as a whole) Traversed by the Maury River and Routes 39 and 252 — Located at Beautiful Rockbridge Baths, A Highly Productive Livestock and Grain Farm, including Some of Virginia's Finest Hunting Territory.

May 17th — 1:30 336 ACRES Selling in 11 Tracts or combinations thereof Tracts from 12 to 75 Acres each, All Including Hilltop Building Sites with Fantastic Panoramic Mountain Views, with ponds, running streams, and excellent pond sites. With Fantastic Mountain Views. Terrain Provides the Feeling of Remote Privacy, Yet the Property is just one-half mile from the City of Lexington and one mile from I81. Ideally Suited for some Horse Farms. Property of Richard & Frances Nuckols.

May 24th — 10:30 3177 Acres, 14 Tracts, CHESAPEAKE SALE NO. 3 8 Tracts in Virginia, (Pittsylvania, Campbell, & Halifax Counties) 6 Tracts in Warren County, North Carolina - Prime Timber Tracts, Long Road Frontage, Good Interior Logging Roads, River Frontage, Rolling Topography, Excellent Game Habitat.

## APRIL

WED. APR. 30 - 10AM Spring Consignment Auction. At Visscher Farm, Rt. 282, 1 mi. S. of Nichols, NY, use Exit 62 off Rt. 17 Expressway, 20 mis. N. of Towanda, PA, via Rt. 187. Howard W. Visscher, Auct.

## MAY

THURS. MAY 1 - 4PM Fogelsville Auction Center, Buggies, Surrey, Sleigh, Miniature Box Wagon, Country Furniture, 1963 Galaxy. Located 5 mis. W. of Allentown in Fogelsville on S. Nursery St. (2 blocks

NW of Rt. 22 Rt. 100 interchange). Ralph W. Zettlemoyer Auct. Co., Inc.

SAT. MAY 3 - 9AM Personal Property at the Leamaster Community Center, Leamaster, Franklin Co., PA, 13 mis. SW of Chambersburg, PA. J. Kermit & Ann Meals, Owners. J. Robert Meyers, Auct.

SAT. MAY 3 - 9:30AM Masonry Eq., Antiques, Tools & Misc. Property of Jack L. Workman in village of Rote off Rt. 477, 2 mis. off I-80 Exit 26. Dave Z. Fisher, Auct.

## PUBLIC AUCTION

Located 8 mi north west of Bedford, 1 mi. east of Fishertown along Route 56. Bedford Co. Pa.

FRIDAY EVE. MAY 9  
6 P.M.

72'x42' Bank barn with sawed and hewed timbers, long hemlock board sheeting, good roof, cut sand stone foundation, some beams 42 feet long, Barn in Excellent Condition.

Barn to be removed from premises in 120 days.

Terms: Cash or approved check.

**DONALD AMICK**  
Fishertown, Pa.

For inspection phone  
814-839-4224 owner  
Stanley Claycomb auct.  
#AU-000155-L  
814-276-3272

## FOGELSVILLE AUCTION CENTER

BUGGIES; SURREY; SLEIGH  
MINIATURE BOX WAGON  
COUNTRY FURNITURE  
1963 GALAXY

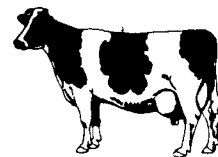
THURS. MAY 1, 1986  
at 4 PM

Located 5 mi. West of Allentown in Fogelsville on S. Nursery St. (2 blocks NW of Rt. 22-Rt. 100 interchange)

2 folding top buggies; Surrey w/o top; cutter sleigh; nice decorated miniature box/body wagon; open top drysink; jelly cupboard; slant top flour chest dtd. 1875; mortised bench; plank high chair; dovetailed chest; rope beds; wdn apple peeler; other small primitives; 4 Neuweiler beer steins inc. goat, beer, moose; Also: Walnut marble top dresser; nice Walnut Vic. wardrobe; OAK: chairs, rockers, dressers, china closet; 1963 Ford Galaxy in mint cond. always garage kept, never in salt, NO RUST, 1 owner. Also selling full line of antiques, household goods, etc.

Conducted by  
**Ralph W. Zettlemoyer Auction Co., Inc.**  
(215) 395-8084  
Pa. License #AU-001809-L

## NEW HOLLAND SALES STABLES, INC.



12 Miles East of Lancaster, Pa, just off Rt. 23, New Holland, PA.

## SPECIAL DAIRY SALE CONSIGNMENTS

For

WEDNESDAY, APRIL 30, 1986

40 GOOD HEIFERS.

Some bred and some open.

These heifers are out of two separate herds.

Consigned by  
**D.H. RUMSEY**

For More Information Contact:

Abe Diffenbach  
717-354-4341

Norman Kolb  
717-397-5538

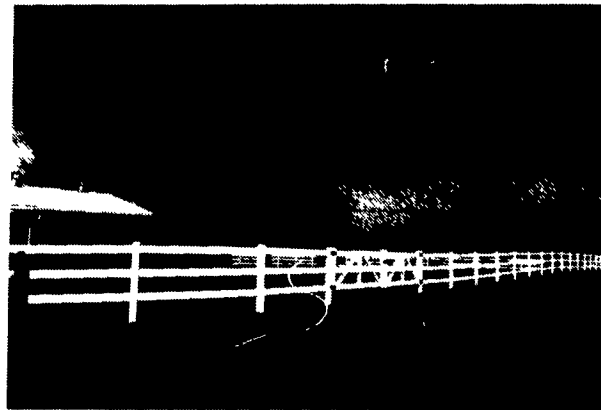
## POLYVINYL P.V.C. PRODUCTS

100's Of Uses

### P.V.C. RAW MATERIAL

- 2x4
- 2x6
- 2x8 T&G
- 4x4
- 5x5
- 7/8"x1 1/2"
- 7/8"x3"
- U-Channel
- Pipe
- Accessories, Etc.

## P.V.C. WHITE RAIL FENCE



3-Rail Fence w/Gates "Never Need Paint"  
P.S. Polyvinyl will not rot, splinter, chip, etc.

Apply To

## QUALITY FENCING & SUPPLY

WHOLESALE AND RETAIL

R.D. 1, Box 428

New Holland, PA 17557

(717) 354-9760  
Send For Free Catalog

804-644-LAND

**OWNBY AUCTION & REALTY CO.**  
BROOK ROAD RICHMOND, VIRGINIA