

Dairy and Livestock Sales

SAT. JUNE 28 - 10AM
Real Estate at 2 Real Estate, HH & Antiques. Located 10 mis. E. of Lancaster in Paradise. Turn off Rt. 30 on South Singer Ave. across from the Paradise Mennonite Church. Lanc. Co., PA. Terms: Elenora E. Hershey, Robert E. & Jeffrey R. Martin & Frank L. Steller, Aucts.

SAT. JUNE 28 - 10AM 75
Acres, Barn & House, HH. Grantville, PA. East Hanover/Lebanon Co. Near Penn Nat'l Race Track.

SAT. JUNE 28 - 4PM Farm Toy Consignment Auction at Lebanon, PA. Fairgrounds. Toy Show opens at 8:30AM. Info, 717-768-3554. Kline & Kreider Aucts.

JULY

SAT. JULY 4 - 9AM Farmersville Auction, Farmersville, 3 mis. E. of Brownstown, Lanc. Co., PA.

SAT. JULY 5 - 10AM Flea Market. On PA Rt. #24 between Stewartstown & New Park. Stan & Mary Nagle, Owners. York Co. Livestock Sales Ltd.

FRI. JULY 11 - 7PM Horse Sale at New Holland Sales Stables, New Holland, PA.

FRI. JULY 11 - 1:30PM Public Auction of PA State Graded Feeder Pigs. Carlisle Livestock Market, Exit 12 off I-81. 717-249-4511.

SAT. JULY 12 - Vermont Sheep Breeder's Assoc. At the Addison County Field Days grounds in New Haven, VT.

SAT. JULY 12 - 10AM Hay Sale. On PA Rt. #24 between Stewartstown & New Park. York Co. Livestock Sales Ltd. Stan & Mary Nagle, Owners.

FRI. JULY 18 - 6:30PM Feeder Pig & Cattle. Keister's Middleburg Auction, along Rt. 522, Middleburg, PA.

FRI. JULY 18 - 5:30PM Antiques & HH sold at every auction. Located off Rt. 41, Lancaster Turkey Hill Minit Mkt., cross RR bridge. Ira Stoltzfus & Son, Aucts.

SAT. JULY 19 - 10AM Flea Market On PA Rt. #24 between Stewartstown & New Park. York Co. Livestock Sales Ltd. Stan & Mary Nagle, Owners.

FRI. JULY 25 - 5:30PM Antiques & HH sold at every auction. Located off Rt. 41, Lancaster Turkey Hill Minit Mkt., cross RR bridge. Ira Stoltzfus & Son, Aucts.

SAT. JULY 26 - 11AM Horse Sale at Keister's Middleburg Auction, along Rt. 522, Middleburg, PA.

SAT. JULY 26 - 10AM Hay Sale On PA Rt. 24 between Stewartstown & New Park. York Co. Livestock Sales Ltd. Stan & Mary Nagle, Owners.

15TH ANNUAL Mt. Zion Road Church of the Brethren CONSIGNMENT SALE

Fredericksburg Fireman's Park
(Leb. Co.)
Route 343, South of Fredericksburg, Pa.
SATURDAY, MAY 3, 1986

9:00 A.M. Sharp!!

We Sell On Commission

82 Chrysler Lebaron, 78 Plymouth Horizon, 80 Oldsmobile, Delta 88 Diesel, 82 Plymouth Reliant, New Lamco 8 Ft. Pickup Truck Body, 3 pt. Fork, Lift, 3 pt. I.H. Sickle Bar Mower, 79 Dodge D50 Pickup, 75 Dodge 300 Truck With 12½ Stake Body w/Hitch For Goose Neck Trailer, Rock Maple Table w/2 Boards & 6 Chairs, Gas Refrigerator, Cooks Range Stove, Wood Stove, 2 Round Tables, Gate Leg Extension Table, Farmers Tables, Marble Top Walnut Dresser, Rocker's 19 Cu. Ft. Freezer, New Convertible Washer, Swinging Butter Churn, 5 H.P. Stingray Go Cart Like New, Wood Lathe w/Motor, Sand Grindstone w/Motor, 76 Honda 360 Motorcycle Unico Air Conditioner (Med. Size), 7x14 8 T. Wagon w/Grain Sides, 8x16 5 T. Wagon w/Hay Rack, 2 Bottom 3 Pt. Plow, Mountville Corn Sheller, 16' Skeleton Type Bale Elevator w/Motor, Fence Posts, Fence Wire, 55 Gal. Drums, Milk Cans, Weathered Barn Boards, Farm Gates, New 3 Pt. Equipment 5, 6, 7, Blades, 5 Ft. Box Blade, 6 Ft. Stone Rake, Potato Plow, 12 In., 14 In. Plows, 4 Ft. & 6 Ft. Disc, Roto Tiller, 36 Scope Hay Tedder, 5 Ft. Rotary Mower, 5 Ft. Estate Mower, 3 Pt. Tractor Seeder, Tractor Wood Saw, Post Hole Digger, 1 Row Cultivator, 3 Pt. Boom, 3 Pt. Tractor Carrier, 8 Ft. Truck Camper Top, 14-Cardboard File Drawers 14 By 25, 2 Plastic 30 Gal. Garbage Cans w/Cart, Hahn 500 L & D 7 Horse Power Riding Mower, AMF Push Rotary Mower, 2 Jack Stands, Plastic 30 Ft. 7 In. Drain Pipe, 1 Doz. 12 In. Cement Blocks, 600 Ft. Electric Wire, 2 Steel Barn Window Sash, Hay Fork, Flant Board, Cabinet High-Fi., Sofa, Nuagahyde Stuffed Chair, 1 Roll Polyethylene Black Plastic 004 20 by 100 Ft. Pair Swim Fins & Scuba Mask, 4 Dining Chairs, Typing Stand, Electric Hedge Trimmer 30 In. Cut, New 4 By 10 Tilt Bed Trailer.

Cousins & Son Will Be Here With Materials, Watches, Spreads, Cut Glass Dishes. **SPECIAL MENTION!** 12x55-73 MOBILE HOME ONE BEDROOM, Stove, Refrigerator Inc. For Inspection Call 866-5943 or 866-2841- To Be Sold At 1:00 P.M.

Will Accept Items Till 8:00 A.M. Sat. Morning. Not Responsible For Accidents, Fire, Or Theft.

Marvel Company Trailer Used For Camping Or Refreshment Stand

Local Auctioneers:

Terms By

The Committee

Contact:

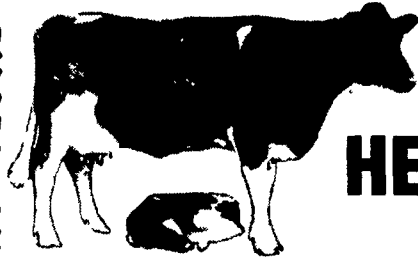
Bob Lentz 717-933-8211

Roger Kirst 717-933-5392

LeRoy Geesaman 717-865-4304

Miriam Kunkle 717-865-2846

Refreshments & Bake Sale By
The Ladies Of The Church



WANTED - HEIFERS OF ALL SIZES

FOR MAY 9, HEIFER SALE

CALVES TO FRESH HEIFERS

All Consignments Welcome- Before
9:00 A.M. Sale Day

Must Be 30 Day TB & Blood Tested
No Auction Heifers

Must Be Local Heifers From John's
Disease Free Herds

ATTENTION- Anyone Not Accepted On Buy Out
Program And Wishing To Sell Herd

We Have Waiting Buyers For Private Sale

Or Will Sell On Dispersal Sale

We Have Orders To Export Heifers From
Buy Out Herds

SHADY LANE DAIRY SALES, INC.

Glenn D. Fite
717-786-2750

R.D. 4 Box 463
Quarryville, Pa. 17566

David L. Fite
717-786-1725

Sixth Annual Spring

PUBLIC AUCTION

MONDAY, APRIL 28, 1986

Auction Time: 3:00 P.M.

Located along East Farmersville Rd., Farmersville, PA
(Lancaster County)

LAWN AND GARDEN EQUIPMENT

- ★ Garden Tractors, Riding Mowers ★
- ★ Roto-Tillers, Chain Saws, Trimmers ★
- ★ Welders, Air Compressors, Generators ★
- ★ Trailers, Log Splitters, Lawn Mowers ★
- ★ Hardware, Hand & Power Tools ★
- ★ 4 NEW UTILITY BARNs ★
(12x12, 12x24, 12x30, 12x12)

NOTICE

This Is A Consignment Auction.
Let Us Turn Your Unused Lawn & Garden Equipment
Into CASH For You.
CALL NOW And Consign Your Equipment,
At (717) 354-4271)

*All Items To Be Auctioned Can Be Seen On
Monday, April 28, 1986 From 8 AM Till Sale Time*

FARMERSVILLE EQUIPMENT

INC.

R.D. 4, East Farmersville Rd., Ephrata, PA 17522
Located in the Village of Farmersville

Auction Conducted By
J & P AUCTIONS

PAUL E. MARTIN
AU-001601-L
(717) 733-3305

JOHN D. STAUFFER
AU-001509-L
(717) 665-5099

TERMS: Cash, Visa, Master Card or Good Check

Supper Available Thru Farmersville Fire Co.

SPECIAL CONSIGNMENT SALE

OF HOLSTEIN DAIRY HEIFERS

FRIDAY, MAY 9, 1986

at 6:30 p.m.

Registered & grade heifers & cows.



All TB & Bangs tested within last 30 days. Cattle received all day Thursday and Friday up until noon.

For information call: 717-922-1490 or 717-837-2222 or 717-523-0360

Keister's Middleburg Auction Sales, Inc.

Rt. 522 R.D. 3 Middleburg, PA

Owners,

DON & WALT KEISTER

Ray Long & Dave Imes, Auctioneers

Terms: Cash, Certified Check or Bank Letter or Recommendation
Trucking Available Restaurant Open