

FREE CATALOG
#56 Farms, Homes & Businesses in 15 States.
American Farm Digest
3546 Watson Rd.
St. Louis, MO 63139
800-325-9943

BUYERS MARKET
Prime SE Minnesota farmland going for about \$700.00 per acre. Over 200 farms available, both cash grain and livestock at bargain basement prices. Good livestock buildings sell for 20% of replacement.
Faribo Realty
Bill Sharkey
PO Box 836
Fairbault, Minn. 55021
507-334-2081

UPSTATE NEW YORK BEAUTIFUL FINGER LAKES AREA
340 Acres - miles of tile, over 2 miles road frontage, 2 homes, barn, milking parlor, silo, pole barn
186 acres - 55 acres of alfalfa, 50 stanchion barn, harvester, 8 room home. Have the amount of acres you desire
325 acres - 58 stanchion barn, pipeline, 3 bedroom ranch, extra barn and 6 room home
70 acres - 40 tillable, barn, good 9 room home with wood furnace
LAMOKA LAKE - 350' of level lake front, 2 bedroom brick home with full basement, 5 bay pole barn garage, with 2 overheads, 5 overhead doors
HISTORICAL LANDMARK - 15 room 3 story home, hardwood floors, 4 fireplaces, 4 baths, full basement, 2 story barn, 8 acres of beautiful grounds. Excellent place for bed and breakfast, catering or just nice living
Other properties - CALL ANYTIME - If not there - we will be
J. R. Allen Broker
Dundee, N.Y. 607-292-3180
14837

FOR SALE BY OWNER
167 acre northeast Pennsylvania modern dairy farm. Mostly tillable w/2 houses, nearly new free stall & dry cow facility, 4 silos w/unloaders, automatic feeding, double 6 totally automated parlor, 1500 gal. bulk tank, large new machine shed, 150 head of cattle, some machinery included.
717-222-4432

Snyder County Sellinsgrove
115 acre farm, productive fruit trees, established business. 2 homes, barn, outbuildings, exceptional property.
Integrity Real Estate
717-837-1061

33 AC. FARMETTE, secluded plank farmhouse partially remodeled, good bank barn, some woods, reduced \$32,000. (W818)
7 ACRES surrounds 3 BR rancher in small village, oversized 2-cr. garage/workshop, trailer hook-up if needed \$54,900 (W1025)
CAMPSITE 8.7 acres on creek near State Land, \$3,500. (W1023)
5 AC. surrounds 3 BR ranch/camp/retreat near State Land, \$33,700. (W1022)
12 ACRES & trailer near State Land \$10,000. (W1009)
20 ACRES, 6 woods, stream, more available \$11,500 (W943)
CAMP 2 sty lodge + 26x40 shell, 46 ac. borders State Land, trout stream, \$48,000 (W1019)
CALL - WRITE FREE LISTS
ERA-Homestead Realty
23 E. Ave.
Wellsboro, PA 16901
717/724-7161



SANFORD G. LEAMAN, REALTOR
717-569-4264
Auctioneer
ESTATES • APPRAISALS • LIQUIDATIONS
NEEDED

An agent for Berks County & Lebanon County. If you are looking for a farm real estate career, please call Sandy Leaman at 717-569-4264. Only those with a farm background or agri business background need apply.

LYCOMING COUNTY
214 Acres can be sub divided into 3 parcels. This is a big poultry operation from the farm to the consumer including all processing equipment, delivery trucks and management would be willing to stay. Call Sandy Leaman or Barbara Lamont at 569 4264 or 297 2619

JUNIATA COUNTY
22 acre hog farm but could easily be returned to a dairy since there is a milk house 18'x24' so what ever your farm or gentleman farm needs this one might just be for you. The 3 bedroom farm house has a modern kitchen and is fully insulated against cold winter weather. Dick says with a little TLC this could be a show place for you to retire. Call Dick @ 734 3673

SNYDER COUNTY
18 Acre farmette for \$57,900. Call Fred Clark at 686-1536 for all the details
88 Acres, log 2 story with 4 bedrooms. Beef farm with barn, implement sheds, springs and pond. Amish area. Priced at \$86,000. Call Leroy at 837-0265
Beaver Springs area. Modern dairy farm with 63 free stalls, milking parlor, lots of other young stock. Housing area. 2 Harvestores and stave silo, 1000 gal. bulk tank, 4 bedroom 2 story modern dwelling. A total of 186 acres with more available or less, and we would adjust the price up or down. Call Leroy at 837-0265

NORTHUMBERLAND COUNTY
Call John @ (717) 649 5861 to see this 63 acre farm with barn but no house. Has a 1/2 acre pond, well and an implement shed @ \$85 000 00 but make offer

SNYDER CO
LeRoy will be glad to show you this fine beef farm of 145 acres along Rt. 522 near McClure. There is a double house, pole barns, implement sheds and lots of road frontage. Soil is good and very productive. (717) 837 0265
399 acres at less than \$1 000 00 per acre just outside Middleburg city limits. There is a fine dairy barn, plenty of silo's, young stock facilities and implement sheds. There are 2 modern houses and large pond. This one may be just right for you. A good Kremer Cherty Silt loam farm. Call LeRoy @ (717) 837 0265 today for spring possession
ONLY \$800 00 per acre along Rt. 522 is this fine beef and hog farm. Was dairy at one time. LeRoy says this one is a steal!! A fine 4 bedroom house and level land make this on a desirable place to farm. Call LeRoy @ (717) 837-0265

SULLIVAN CO
Close to Forksville is this 166 acre dairy farm with 9 room farm house, large bank barn w/33 stanchions, 2 silos w/unloaders, barn cleaners, grain bin, implement sheds and other bldgs. excellent land so for this desirable farm call John @ (717) 649-5861
2.6 acre farmette with 2 bedroom block and stucco dwelling. Horse barn and pasture in Marticville area. Call Pat @ (717) 896 8958
Near Elizabethtown is this 10 acre farmette w/Harvestore silo, bunk feeder for your beef operation or use this one for horses. There is a large stone farm house with an excellent picturesque setting w/a beautiful farm pond, 3 car garage and more land available call Sandy and he'll tell you how easy it is to own w/private financing. 569 4264

BLAIR CO
This large grain farm is level and very fertile. This one has potential for splitting into smaller farms and maybe more land available for starting a new Amish or Mennonite community. Call John @ 649 5861 to find out more about this one and its benefits

PERRY CO
A 32 stanchion dairy farm near Blain w/2 large implement sheds, brick 4 bedroom dwelling, 2 silo's and machine shop or garage. There are 144 acres with some to rent if you want. There is attractive owner financing so call Sandy @ 569 4264 for details
175 acre hog and beef farm near Andersonburg w/long farm fields, grain storage, large brick dwelling w/summer house. An ideal Amish farm

NORTHUMBERLAND CO
116 acre Beef farm with large 5 bedroom farmhouse. This farm is in a high state of cultivation. Near Agustaville. Call John @ 649-5861
Near Turbotville is this large dairy farm where the owner wants to retire. 4 Harvestore silos and a Harvestore Slurry. This one is a milking parlor operation and lots of free stalls. Call John @ 649 5861

BRADFORD CO
Super dairy operation with 101 comfort stalls, 5 silos including high moisture unit. 225 tillable acres in high state of cultivation, modern 4 bedroom dwelling with many, many extras. This farm must be seen to be appreciated. One of the finest farms in Bradford Co. Spring possession is possible. so call Barbara Lamont at 297 2619 or Sandy Leaman 569 4264
245 Acre Modern Dairy with 45 stalls, 2 Harvestore silos 20x40 and 20x80 and a Star silo 16x64. Harvestore slurry and much much more. This fine farm was just listed so be the first to see it. Excellent soil with high productivity. Call Barbara at 297 2619 or Sandy at 569 4264
This large dairy operation has the potential every father w/sons wants if you want to be near dad for a combined effort to make dairy farming easy. You will be able to milk 100 plus cows if you are ambitious. There is a total of 650 acres or more but if you aren't mined to operate this large than tell us what you want and we can tailor this farm to meet your needs. This owner is ready to retire for health reasons. There are silage and grain storage facilities hay and implement sheds as well. Be wise call today and we'll show you one of the finest & farm houses in addition. Call Sandy Lehman @ 569 4264 or Barb @ 297 2619 today
215 Acres could expand and give you more acreage or cut it down to the size you want. There is Farmers Home money available at low interest rate if you qualify. Priced at less than \$900 per acre with modern barn and lots of equipment included. Call Barbara Lamont at 297 2619 or Sandy Leaman at 569 4264

"We Serve Your Farm Needs"

UNION AND MONTOUR COUNTIES CALL FRED CLARK AT 717-523 7201
COLUMBIA AND SURROUNDING COUNTIES CALL PAUL "PETE" ZEISLOFT AT 717-437-2305
LANCASTER COUNTY CALL KEN YOUNG 717 426-1098, DAVID R GEIB 717 284-4680 OR SANDY LEAMAN 717-569-4264
SNYDER & UNION CO CALL LEROY HIBBS AT 717-837-0265
NORTHUMBERLAND LYCOMING, MONTOUR COUNTIES, CALL JOHN BOMBERGER 717 649 5861
DAUPHIN COUNTY, CALL PAT KAUFFMAN 717 896-8958
BRADFORD COUNTY, CALL BARBARA LAMONT, 717-297-2619
JUNIATA, PERRY FRANKLIN COUNTIES, CALL RICHARD B CRAWFORD 717-734-3673

TIOGA COUNTY Dairy farm for sale or rent with option to buy, presently operating, bulk tank, pipeline milking units, barn cleaners. Exc. land plus 2 homes. Call for details. Many other farm and investment properties available.
OUTSKIRTS OF TOWN - Large house, 2 mobile home lots + 202 acres wooded and open land, with stream, springs, timber and large undeveloped gravel bank. Could be subdivided. Investor's dream. Asking price \$150,000 #872.

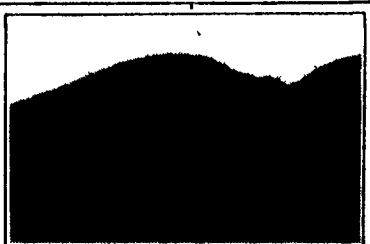
Call Al Stoltzfus
717-724-3500
Hoeh REAL ESTATE
61 Central Ave.
Wellsboro, PA 16901

SPRING-TIME TO START FARMING-RIGHT?
Why not do it here!!
3 Large Farms
#1 206 Ac. Cumb. Co. Large brick house, nice limestone soil, bank barn, etc.
#2 342 Ac. Bedford Co. Large first class dairy operation w/owner financing. Can be taken over mid season w/cattle & equipment!! Health problems.
#3 316 ac. Perry Co. 60 cow operation w/2 sets of buildings, mostly all nice level limestone soil w/stream & pond. This operation can also be taken over in mid season. Serious back problems. Call today, get this under agreement.
MAHLON OBERHOLTZER
R.E. Agency
Smoketown - 717-392-1177

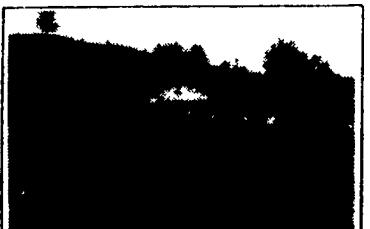
FARMS FOR SALE
FRANKLIN CO., SPRING RUN, PA - 216 acre hunter's paradise. Own your own mountain plus this 2 story immaculate home and Gambriel roof barn. Approximately 170 acres of mature timber and approximately 40 acres of grassland and tillable cropland. Deer and turkey, trout pond, a perfect Gentleman's Farm. Call Francis Ullshney, 717-272-2989
UNION TWP., LEBANON CO., PA - 38 acre general farm, 2 1/2 story older log home, 3 bedrooms, 2 baths, kitchen, living room and family room 46x84 bank barn setup to fatten steers with 80 feet of trough space 28x110 cement block building with truss and tin roof. 40x70 modern steel sided building with metal roof, 5 ton feed bin, 2 wells, 15 acres of clover, the farm is in a high state of cultivation. Lined 3 years ago. Price, \$148,900. Call Realtor Associate June Ebersole, 717-865-2771.
FRANKLIN CO., PA, 93 ACRE FARM, \$115,000 - Limestone home, bank barn, ok for small dairy, steers or horses. Assume \$80,000 mortgage. Call Nelson Ebersole, 717-867-5221
LEBANON CO., SOUTH LEBANON TWP. - 69 ACRES - Ranch home, bank barn and hog barn, macadam drive \$196,000. Call Pat Dundore 717-272-8331
SUBURBAN REALTY FARM DIVISION
30 West Main Street
Annville, PA 17003
717-867-4487

GOOD COVER for deer & turkey on 61 acres in Harrison Twp. Small stream, electric available \$27,450 (D464)
FARMETTE near fishing & boating area 6 ac., 3 BR, oil/wood heat. Partially remodeled. 2 full baths. \$36,900 (D409)
CAMP OR HOME 4 BR, gas heated, sm village. Walking distance to paper co land. Easily affordable for a retreat \$23,000. (D479)
RESORT 109 ac., 2 ponds, plenty of privacy. 3 BR aluminum sided cabin. About 60 ac. wooded. Make this your own private retreat. \$74,000. (D434)
FREE LISTS
ERA-Homestead Realty
168 W. Main St.
Westfield, PA 16950
814/367-2222

FIX UP RANCHER, 3 BR, full basement (walls cracked), deck, 2 37 ac. overlooking world, low taxes. \$28,000 (M1764)
RETIREMENT 3 BR, 2 bath rancher, bsm't, 2 cr garage, country setting & views, \$39,900. OR, 2 BR rancher \$19,500 (M1762-M1741)
APARTMENT 3 units in small town, rented \$33,900 low taxes (M1751)
RETREAT 3 BR on 20 7 country wooded acres \$32,500. (M1747)
61 ACRES views forever, terms, \$26,000, 120 ACRES woods/meadow/stream \$59,500, 13 7 ACRES wooded retreat \$8,500 (M1732, 1644, 1591)
CAMP 20x26 two story unfinished, 54 ac., vast hunting, \$29,500 (M1724)
FARMETTE 54 ac. pasture/tillable/woods, good barn, large older farmhouse, \$46,900 (M1725)
FREE LISTS
ERA-Homestead Realty
267 S. Main St.
Mansfield, PA 16933
717/662-3287



This 200 acre mountain farm offers outstanding opportunity for livestock farming and/or timber management. Elevations of 2 600 3 400 feet provide excellent growing conditions for its 100± acres in mature timber and its 100 ± acres in highland bluegrass meadows. Several nice springs. Two-story house in good condition \$150,000



Outstanding 525 acre farm near Roanoke Virginia. Well fenced and watered with excellent growing conditions for its improved pastures of native bluegrass (275 acres). Also includes 26 acres fenced cropland and 200 timberland. Well maintained farm buildings. Beautiful one story brick home with three bedrooms and three baths. RARE OPPORTUNITY! \$395,000

128 acres 46 acres in rich creekbottom cropland 8 acre meadow 74 acres of game abundant woodland. Near Roanoke and adjoining Jefferson National Forest. Equipment shed, grainery, livestock working/loading pen, bunker silo, good boundary fencing and over 3 500 feet of bold Craig's Creek. Long paved road frontage. In the midst of trout fishing country \$112,500



Outstanding 525 acre farm near Roanoke Virginia. Well fenced and watered with excellent growing conditions for its improved pastures of native bluegrass (275 acres). Also includes 26 acres fenced cropland and 200 timberland. Well maintained farm buildings. Beautiful one story brick home with three bedrooms and three baths. RARE OPPORTUNITY! \$395,000

Contact For Further Information On These and Other Fine Virginia Farms and Land.
G. OTIS MEAD III
Accredited Farm & Land Broker
Home 703/463-2740
MEAD ASSOCIATES
INCORPORATED
Real Estate Services
21 North Main Street, Lexington, Virginia 24450 Telephone 703/463-7168
JAMES Wm. MOORE
Accredited Farm & Land Broker
Home 703/463 7050

