

FOR SALE: 6,000 gal. tank trailer, excellent for hauling water, liquid fert., etc. \$3,500. 215-593-2751 or 717-442-8933.

**USED TRUCKS**



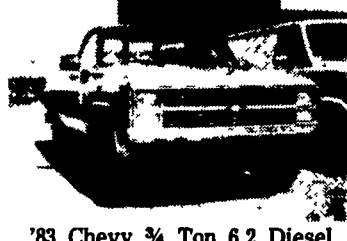
'82 Chevy Blazer Silverado 6.2 Diesel 4x4, AT, PS, PB, AM/FM, Air, Cruise Control, Ex. Cond., 45,000 Miles \$7,900



'83 Chevy Suburban Silverado, AT, PS, PB, Air, AM/FM, 2 Tone Paint, Rallye Wheels, 46,000 Miles, Ex. Cond. \$8,900



'84 Chevy S10 4x4, 5 Speed, 6 Cyl., AM/FM, Air, 44,000 Miles \$7,800



'83 Chevy 3/4 Ton 6.2 Diesel, AT, PS, PB, AM/FM, Air, Cloth Seat, 2 Tanks, 2 Tone Paint, Ex. Condition \$5,900

Used Ford Dual Wheel 8 Ft. Pickup Bed ..... \$700

**MARTIN'S AUTO SALES,**  
725 E. Main St., New Holland, PA 17557  
(717) 354-9967

1972 GMC truck w/12" side chipper, dump body, motor needs work, rated at 24,000 lbs., \$3,800 or Best Offer. 1965 Int. truck Loboy 12' dump body and good tires, farm truck, motor good, clutch frozen, \$325. 215-885-1032.

1974 Ford 350, ton truck, low mileage, good condition, inspected, York Co., 717-632-2925.

1974 Ford W-9000 C.O.E. tractor, NTC 350, 12513RR transmission, Budd wheels, good condition. 717-653-8137.

1978 Ford F350 Super Cab, flatbed, 9,300 GVW, 400 V8, 4 spd., PS, PB, AM-FM, dual tanks, good condition. \$3,200. S. Lanc. Co. 717-548-3501

1978 Ford F150 pickup, V8, auto., good condition, \$2,200.; 1966 Int. pickup, V8, 4 spd., heavy duty, \$200. Adams County. 717-677-8789

1980 Ford F350 dual wheel, cab & chassis, 60" CA, 400 auto., PS, PB, air. \$4,950. 717-733-2873

FOR SALE: F350 dual wheel pickup, 4SP, 4WD, w/aluminum stake body w/42' flatbed tri-axle gooseneck trailer. Will sell separate or as unit; also chains, binders, straps and misc. equipment. Available mid May. 717-354-5341.

1974 GMC line truck with 12,000 lb. Pitman corner mount, 42' sheave height. Equipped with remote capstans winch; inbed winch. Good for tree trimming, rafter setting, and heavy equipment service. \$7500. Evenings, 717-247-2948.

1977 Louisville F800, 26,000 GVW, 391 engine, 2 spd. rear, 21' Eby aluminum livestock body. 814-695-6177

'79 Int'l. 21,000 gross, 345, V8, 4SP, w/2SP, 15' flatbed w/alum. deck, 25,000 orig. miles, orig. owner, VG MPG, excel. cond. 215-383-5545.

1965 White 6 or 8 horse van, 26' body, back opens for multiple use, excellent condition, new paint, inspected, \$5,500; (2) 2 horse Shoop trailers, \$1,200 and \$975. 215-286-5222.

1979 Ford F150 Super Cab, 4x4, V8, PS, PB, Ex. Cond... (1) Automatic; (1) 4 Speed <b>'6,995 ea.</b>	1979 Dodge 150 Power Wagon, 4x4, Prospector Pkg., Brown w/Saddle Int., 8 Cyl., Auto., PS, PB, AC, Trailer Pkg. Equipped... <b>'6,995</b>	1985 Ford F250, 4x4, 2 To Choose From - V8, 4 Speed, Both Excellent Condition... <b>'11,995 Ea. Now '10,995 Ea.</b>	1984 Ford Bronco II, V6, PS, PB, AM-FM, 4x4, 2 To Choose From - One Auto. and One 5 Speed... <b>'10,495 Ea.</b>
1980 Ford F250, 4x4, V8, Auto., PS, PB, Tinted Glass, Low Miles... <b>'8,995</b>	1982 Ford Bronco XLT, 4x4, Power Windows And Locks, Tilt, Cruise, Air, 49,000 Original Miles, Loaded... <b>'11,995 Now '10,995</b>	1981 Ford F350, 4x4, 8 Cyl., Auto., PS, PB, 2 Tone, Stereo, Running Board & Step Bumper, 9.50x16.5L Snow Tires... <b>MUST SEE!</b>	1982 Ford F250, 4x4, 351, V8, Auto, PS, PB, Step Bumper - Must See, Like New... <b>'9,995</b>
1984 Chevy Suburban, 4x4, Auto., PS, PB, AC, Power Windows & Locks, Tilt, Cruise, Set To Tow and More... <b>'15,995</b>	1977 Jeep Wagoneer, 4x4, Auto., Air, PS, PB, 65,000 Miles... <b>'5,795</b>	1983 Ford F150 Super Cab, 351 Auto., Air, PS, PB, Stereo, 28,000 Miles, 1 Owner - New Car Trade... <b>'8,495</b>	1980 Ford F150 Super Cab, 351 V-8, Auto., 52,000 Original Miles... <b>'5,995</b>
<b>2x4 PICKUPS</b> 1973-1985 Chev-Ford-Dodge From \$1995 20 To Choose From	1947 Int. Pickup - Hot Rod - 327 Chevy, Auto., Completely Rebuilt... <b>MUST SEE!</b>	1984 Chevy Mark III Conversion Van, Dealer Demo., Loaded, Never Titled, 11,000 Miles... <b>'15,995</b>	<b>VANS</b> 1979 - 1985 Window - Cargo - Conversion From \$4995 18 To Choose From

★ 100 USED TRUCKS IN STOCK AT ALL TIMES! ★  
12 Month - 12,000 Mile Warranty Available

CALL TOLL FREE 1-800-362-7655

OPEN 9 to 9 Mon. to Fri., 9 to 5 Sat.

**RHODES Oldsmobile**



SALES - SERVICE - LEASING  
Rt. 663 & Swamp Pike

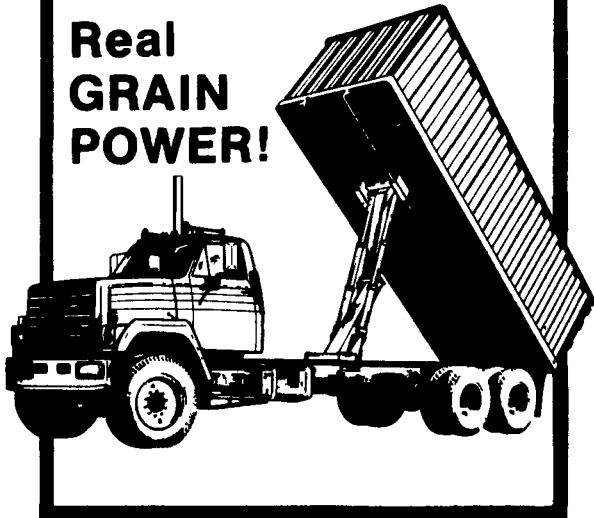
GILBERTSVILLE 215-327-3000

AREA'S LARGEST NON-FRANCHISED NEW & USED TRUCK DEALER



"CLEAN FLOW"  
**Stakeless Bodies**  
by OMAHA STANDARD

Real GRAIN POWER!



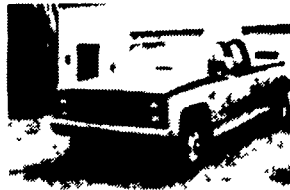
- 52" or 60" heavy gauge sides give you more hauling capacity for grain, sugar beets and other commodities
- "Clean Flow" design of the extra deep 30° sidewall corrugations allows complete emptying with no sharp corners for grain to hang up.
- Greater inside width and length make this an ideal body for hauling bagged or palletized products.
- Standard three section full opening rear doors.
- Complete your "Grain Power" package with an Omaha Standard work-proven hoist. Choose from the most complete line of scissor or stabilized "Olympic" telescopic hoists.
- Compare any of Omaha Standard's full line of steel, aluminum or wood grain bodies and rugged hoists... you'll know why Omaha Standard is the most respected name at work on the farm today.

Available at:  
**FARMERSVILLE EQUIPMENT INC.**

RD 4, East Farmersville Road  
Ephrata, PA 17522  
Located in the Village of Farmersville,  
Lancaster County  
**717-354-4271**

**Omaha Standard**

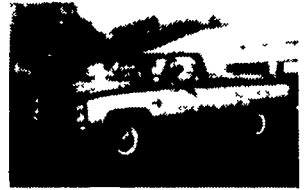
**FOR SALE**



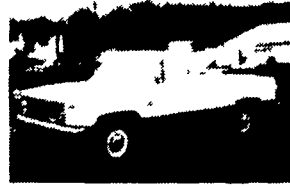
1984 Chevy Silverado C30 Dual Wheel, Crew Cab, 4x4, 454 Auto, PS, PB, PW, PDL, Cruise, Tilt Air AM/FM Cass. Stereo, Dual Tanks, Trailing Package 25,000 Miles, Ex. Cond. \$13,500



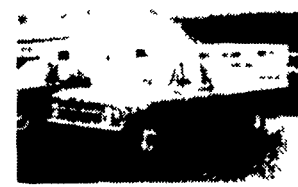
1985 Ford F350 4x4 351 Auto, PS, PB, Lock Out Hubs, Radial Tires, Trans. Cooler, 9000 GVW \$11,500



1984 Chevy Silverado C20 HD, 3/4 Ton, 350 Auto, PS, PB, PW, PDL., Cruise, Tilt, Air, Dual Tanks, 8600 GVW, Reg. Gas \$8,950



1984 Chevy C20 HD, 3/4 Ton 350 Auto, PS, PB, AM/FM, Radial Tires, 8600 GVW, Reg. Gas \$7,450



1985 Chevy C30 Dual Wheel, 10 Ft. Stake Body, 350 Auto, PS, PB, AM/FM, Dual Tanks, 10,000 GVW \$10,200



84 GMC 3500 Dual Wheel Pickup, 350 4-Speed, PS, PB, 10,000 GVW \$9,000



83 GMC 3500 With 10 Ft. Stake Bed, 454 Auto, PS, PB, Air, 36,000 Miles, 9,000 GVW \$6,950



1982 Chevy Scottsdale C30, Dual Wheel, Cab & Chassis, 454 4-Speed, PS, PB, 10,000 GVW, 84 Inch CA, 2 To Choose From \$7,400



1984 Chevy C30 Dual Wheel 8 Ft. Flat Bed, with Gooseneck Hookup, 454 4-Speed, PS, PB, Air, AM/FM Dual Tanks, 10,000 GVW, 34,000 Miles \$8,950

**A & J AUTO SALES**

798 East Main Street - Rt. 322 East  
Ephrata, PA 17522  
**717-733-2873**