

# Livestock market and auction news

## King's Auction

Kirkwood, Pa.  
 Tuesday, Apr. 15, 1986  
 Report supplied by auction  
 45 loads.  
 Alfalfa, 51.00-152.00, mostly  
 82.00-100.00; Alfalfa Mixed 69.00-  
 86.00; Timothy and Timothy Mixed  
 48.00-97.00; Clover & Clover Mixed  
 56.00-58.00; Mixed Hay 50.00-90.00,  
 some Poor Hay down to 37.00.  
 7 loads Straw 64.00-81.00; Corn  
 Fodder 47.00 per ton.

## Green Dragon Hay

Ephrata, PA  
 Friday, April 11  
 Report supplied by Auction  
 145 loads.  
 Mixed Hay, 36.00-101.00; Alfalfa,  
 36.00-128.00; Timothy, 30.00-106.00;  
 Orchard Grass, 46.00-49.00; Clover,  
 50.00; Stubble Hay, 34.00; Corn,  
 60.00-73.00.  
 Straw, 38.00-67.00; Oats, 1.55-1.60  
 bu.

## Westminster Hay

April 15, 1986  
 Alfalfa 50.00-84.00; Alfalfa-Grass  
 40.00-84.00; Alfalfa-Timothy 55.00-  
 56.00; Timothy 50.00-54.00;  
 Timothy Mix 60.00; Clover and  
 Timothy 47.00-49.00; Clover &  
 Grass 49.00; Grass 45.00-51.00;  
 Mixed 49.

## Belleville Hay

Belleville, PA  
 Wednesday, April 16  
 Report supplied by Auction  
 33 loads.  
 Alfalfa, 62.50-107.50; Mixed Hay,  
 40.00-95.00; 3 loads Straw, 62.50-  
 67.50; 1 ld. Oats, 1.35 bu.

## Vintage Hay

Paradise, PA  
 Thursday, April 17, 1986  
 Report Supplied by Auction  
 13 loads.  
 Alfalfa, 48.00-108.00; Mixed Hay,  
 39.00-73.00; Ear corn, 69.00; Straw,  
 51.00-68.00.

## Farmers' Auction Hay

Duncansville, PA  
 Monday, Apr. 14, 1986  
 Report supplied by auction  
 12 Loads Hay.  
 Alfalfa Mix 60.00; Good Mixed  
 40.00-60.00; Clover 48.00; Straw (2  
 loads) 36.50-40.00.

## Chambersburg Hay

Chambersburg, PA  
 Thursday, April 17  
 Report supplied by Auction  
 6 loads.  
 Mixed Hay, 51.00-55.00; Brome  
 Grass, 61.00; Alfalfa, 80.00-86.00.

## Keister's Hay & Straw

Keister's Middleburg Auction  
 Tuesday, Apr. 15  
 Report supplied by auction  
 20 loads. Hay, Alfalfa, 72.50-  
 102.00; Mixed Hay, 39.00-80.00; 3  
 loads straw, 41.00-57.50; 3 loads  
 Ear Corn, 70.00-72.50; 3 loads Hay,  
 1.30-1.65 bu.; 4 loads Fireplace  
 Wood, 35.00-38.00 ld.

## Leinbach's Hay

Shippensburg, PA  
 Saturday, April 12  
 & Tuesday, April 15, 1986  
 Report supplied by Auction  
 53 loads.  
 Alfalfa, 40.00-92.00; Mixed Hay,  
 39.00-75.00; Timothy, 50.00-64.00;  
 Clover, 45.00-57.50; Straw, 49.00-  
 66.00; Ear Corn, 65.00-77.00; Oats,  
 2.00 bu.

## Good's Hay

Leola, Pa.  
 Wednesday, April 16, 1986  
 Report Supplied by Auction  
 96 lds.  
 Alfalfa, 52.00-122.00; Timothy, 2  
 at 70.00; Mixed Hay, 50.00-111.00;  
 Clover, 2 at 68.00 and 69.00; Straw,  
 57.00-85.00; Corn, 67.00-75.00; Oats,  
 1.60-1.85 bu.

## Penns Valley Livestock

Centre Hall, Pa.  
 Tuesday, Apr. 15  
 Report supplied by Auction  
 Beef Cows: Utility and Com-  
 mercial 37.00-42.85; Cutters 34.00-

36.50; Canners 31.00-33.85; Shells  
 29.00.  
 Steers: Good 50.00-53.75;  
 Standard 46.00-49.50.  
 Bulls: Good 41.00-44.25;  
 Standard 36.00-41.50.  
 Veal Calves: Choice 68.00-  
 74.00; Good 55.00-67.00; Standard  
 41.00-54.00; Utility 35.00-40.00.  
 Farm Calves: Bulls 85.00-  
 102.00; Heifers 60.00-72.00.  
 Hogs: 37.00-40.75.  
 Sows: 34.50-36.00.  
 Boars: 18.00-22.00.  
 Shoats: 25-30 lbs. per head  
 14.00-22.00; 30-35 lbs. per head  
 24.00-31.00; 35-50 lbs. per head  
 34.00-38.00.  
 Lambs: 80.00-92.00.  
 Goats: Per Head 16.00-30.00.



## ATTENTION FARMERS

EVERY MONDAY  
**HATFIELD PACKING CO. and  
 MOYER PACKING CO.**

Will Receive Your  
 Hogs and Cattle at the  
**DANVILLE LIVESTOCK MARKET**  
 RD 4, Danville, PA

- We will receive your hogs from 8 AM to 12 Noon every Monday. Your hogs will be weighed and paid for immediately.
- We will also accept your sows & boars.
- Your cattle will be received from 12:30 to 5 P.M. We will either pay you for your cattle immediately or you may sell them dressed weight.
- There will not be a commission or yardage fee deducted from your check.
- You may call our office Monday morning and we will be able to tell you the base price for hogs for the day.

MELVIN M. LEHMAN - Owner  
 Danville Buying Station

Phone: 717-275-2880

## Green Dragon Livestock Sales

Location: Ephrata RD 4. 1  
 mile N. on North State St.,  
 Ephrata.



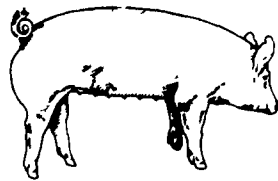
## COWS COWS COWS SALE EVERY FRIDAY

Lots of good Northern Feeder  
 & Stockers. Slaughter Cows  
 - Bull Steer, Veal-lamb.

11:00 A.M. - Beef Sale 200-300 each week.  
 1:00 P.M. - Dairy Sale.  
 7:00 P.M. - Small Animal Sale.

For Special Sales and Herd Dispersals  
 on farm or at our barn or other market  
 information call: Office 717-733-2444,  
 Home 717-838-4318.

**WALTER H. RISSER, Proprietor**  
 All out of state and new buyers must have  
 cash or certified check or current letter of  
 credit from bank.



## EMERY'S BUYING STATION

## OPEN TO RECEIVE YOUR MARKET HOGS

AT THE GREEN DRAGON MARKET  
 RD 4, EPHRATA, PA 17522  
 1 MILE NORTH OF EPHRATA  
 ON NORTH STATE STREET.

HOURS: MONDAY, TUESDAY, and  
 WEDNESDAY 6:00 A.M. to 11:30 A.M.  
 215-458-5677 Residence  
 717-733-9648 Office

**YOU ARE PAID FOR YOUR  
 HOGS IMMEDIATELY**

Ken & Lois Emery, Proprietors

## HAY & STRAW SALE

12:00 Noon  
 Every Wednesday  
 Westend of Avondale  
 at the intersection of  
 Baltimore Pike and  
 Route 41.

Harvey Z. Martin  
 215-268-3604  
 (Office)  
 215-445-5303  
 (Residence)

## KING'S AUCTION KIRKWOOD Hay, Straw and Grain Auction EVERY TUESDAY 12:00

Located Rt. 472 5 miles south  
 of Quarryville or 6 miles north of  
 Oxford at Shaub's Auction  
 House  
 Lloyd H. Kreider,  
 Auctioneer  
 AU-000513L  
 No out of state checks  
**ALL TRUCKERS AND  
 FARMERS WELCOME**

## HOGS CATTLE FUTURES AND OPTIONS

COMMISSION  
 \$50.00

Call for information  
 plus our  
**FREE**  
**MARKET LETTER**  
 featuring a  
**Special Situation  
 Suggestion!**

SPECIALIZING IN  
 COMMODITIES EXCLUSIVELY  
 IN PENNSYLVANIA  
 CALL  
**(800) 322-9274**

ALL OTHER AREAS  
**(800) 523-9388**

ALLENTOWN  
**(215) 821-8111**  
**Rosenthal &  
 Company**

2200 Hamilton Street,  
 Suite 102,  
 Allentown,  
 Penna. 18104  
 Members of All Principal  
 Commodities Exchanges



# "WANTED" LEGHORN FOWL



## NEW SANITIZED CAGE CART SYSTEMS OR COOPS

Call Richard Sechler,  
 Tom Feger, Barry Miller  
 for quotations

PA Watts # 800-342-2249  
 or call collect 215-488-7617

**SECHLER'S POULTRY, INC.**  
 Box G, Strausstown, PA 19559