

Sale Reports

A public auction of farm machinery, antiques, household & butcher items was held 1 mile west of village of Verdilla, Snyder County, Pa. on April 12, 1986. Some prices received include:

Copper wash boiler \$60; Sideboard buffet with beveled mirror \$150; (2) 10 gal. crocks \$60 each; Long wooden pie paddle \$40; Blanket chest dated 1833 \$320; 1966 Ford custom car \$2300; wooden butcher tub \$75; (2) 10'x12' tarps \$42.50 each; GT rolling flow seed cleaner with 3 hp. motor \$510; (2) Favorite Gravity bins on grove running gears \$575 each; 13 8 hoe Ontario grain drill \$275; I.H. #30 Corn sheller \$180; (2) 3 section 12 ft. Pittsburgh harrows \$235 & 160; Woods Bros. one row cornpicker \$275; JD KBA transport disk \$400; two wheel trailer #120; Century trailer type boom sprayer with 175 gal. tank \$500; N.I. #17, manure spreader \$350; I.H. 460 tractor with I.H. #31 power loader \$2900; Farmall H tractor \$850; Farmall M tractor \$750; 8 ft. 2 pt. hitch scraper blade \$410; J.D. #555 3 bottom 14" trailer plows \$275; N.I. #825 flail chopper \$600; N.H. #269 baler \$850.00 and a I.H. #82 pull type combine \$1550. There were 200 plus registered bidders at the auction. Auction was conducted by Dale L. Longacre Auctioneering.

XXX

A Public Sale of commercial real estate and tools was held April 12 by Eli B. Fisher, Inc. 3 miles south of Lancaster on Route 222.

The 1 1/2 acre property with 230 ft. frontage and a 40x80 ft. building was sold for \$95,000.

Other prices were: 1978 GMC truck \$9900, Krassal 9 ton industrial trailer \$2400, 50A M.F. tractor w/backhoe \$7000, skid loader \$2700, steel scaffolding \$60 a set, 4" steel curb forms \$18 a pc., concrete finishing machines \$350 & \$340, concrete mixer \$940, 8" steel curb forms \$10 a pc., concrete vibrator \$220, 2 steel sawhorses \$12 each and builder's transit \$760.

The auctioneers were Steve and Steve, Jr. Petersheim.

XXX

A Public Sale of farm machinery was held April 11 by Robert N. Klingler and Kenneth H. Klingler at Green Ridge Farm, 3 1/2 miles north of McClure, Snyder Co., Pa. There were 169 registered buyers at the sale.

Some prices included: J.D. 4000 tractor w/cab \$8900, J.D. 3020 tractor \$6000, J.D. 2510 G tractor \$4300, rear weights \$85 each, front weights \$35 each, J.D. chisel plow w/8 shanks \$1150, J.D. 14' disc \$1100, J.D. 4-row 7000 corn planter \$5300, J.D. 35 forage harvester w/2

heads \$1825; N.H. 269 baler w/thrower \$1600, N.H. 55 rake \$600, N.H. 479 haybine \$1600, field sprayer \$165, N.H. 36 crop chopper \$320, Smoker 24' elevator \$295 and 2-row 3 pt. transplanter \$250.

Earl W. Eash and Kenneth E. Hassinger were the auctioneers.

XXX

A Public Sale of farm machinery was held April 12 by M. Ethel Long, 5775 Bowers Road, Taneytown, Maryland.

Some prices included: Farmall 400 tractor \$1400, Farmall M tractor \$2350, N.H. 310 Hayliner baler w/thrower \$5350, ensilage wagons \$1120 & \$520, N.H. 1-row corn chopper \$2550, bale wagons \$560 & \$460, mixed hay .50 cents per bale and butcher kettle \$75.

Calvin L. Amoss was the auctioneer.

XXX

A Public Auction of farm equipment and a truck was held April 12 by Dennis P. and Eileen Nussbaum, 1630 W. Main St. Valley View, Schuylkill Co., Pa.

Some prices included: Oliver 770 tractor \$1500, Oliver 9' mower conditioner \$500, N.I. 200 bushel manure spreader \$450, Int. #15 hay rake \$410, flat bed wagons \$135 to \$410 and 1971 Chevrolet 3/4 ton pickup

truck \$495.

Mike and George Delbert were the auctioneers.

XXX

The Clymar Farms Complete Dispersal was held April 12 by Clyde and Robert Wilson, 3 miles off Route 706 near Rushville and 12 miles from Wyalusing, Susquehanna Co., Pa.

The 45 head of registered and grade Holsteins sold averaged \$785. The top cow sold for \$1300 and two were sold for \$1100 with

another bringing \$1050.

Other prices included: Case 870 tractor \$4800, J.D. 755 loader \$26,000, Ford 8600 tractor \$6400, Dion silage wagon \$975, 3 axle dump trailer \$1050, 3 axle livestock trailer \$800, N.H. 489 haybine \$2500, N.H. 890 chopper w/2-row corn & pickup head \$2250, Brillion seeder \$800 and Ford disc \$1250.

The sale was managed by Gordon Wood with Arlow Kiehl as auctioneer.

Cumberland Valley Consignment Sale held on April 12th at Chambersburg Livestock Sales Inc. returned the following prices, Ford 3000 \$3700, Ford 600 \$2400, Cub \$1700, 1937 John Deere \$1000, spreader \$450, wagon \$360, 3 pt. equipment \$125-\$450, rototiller & mowers \$35-\$325, Feeder steers 52 cents-57 1/2 cents, Heifers 42 cents-45 cents, Feeder pigs \$35-\$46.

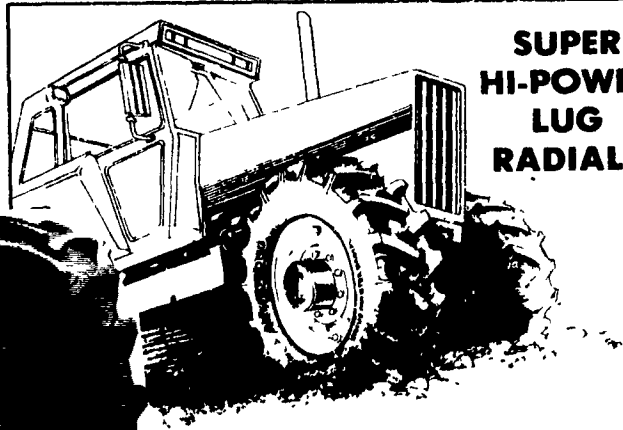
Auctioneer J. Rodger Wildeson.



Over 15,000 TIRES IN STOCK

SPECIAL OFFER

ON ARMSTRONG RADIAL FARM TIRES



SUPER HI-POWER LUG RADIALS



14 9R28 10 Ply	\$325.00
16 9R28 10 Ply	\$399.00
18 4R34 6 Ply	\$399.00
16R38 6 Ply	\$429.00
18 4R38 6 Ply	\$459.00
18 4R38 8 Ply	\$529.00
18 4R26 10 Ply	\$449.00
20R34 8 Ply	\$639.00
20 8R38 8 Ply	\$649.00
20 8R38 10 Ply	\$699.00

\$100 CASH REBATE
From Armstrong With Purchase Of A Pair Of Super Hi-Power Lug Radials

Loader-Dozer



★ **TUBELESS** ★

16 9x24 8 ply	\$265.00
16 9x24 10 ply	\$330.00
17 5Lx24 6 ply	\$240.00
17 5x24 8 ply	\$270.00
15 5x25 12 ply	\$320.00
17 5x25 12 ply	\$445.00
19 5Lx24 10 Ply	\$359.00
18 5Lx24 12 Ply	\$359.00
21Lx24 12 Ply	\$465.00

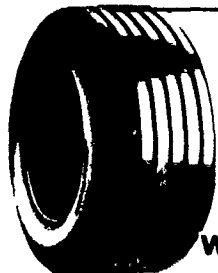
★ **TUBE TYPE** ★

14 9x24 6 ply	\$200.00
14 9x24 8 ply	\$220.00
16 9x24 6 ply	\$220.00
16 9x24 8 ply	\$235.00
16 9x24 10 ply	\$280.00
17 5Lx24 8 ply	\$240.00
16 9x28 8 ply	\$260.00
18 4x28 10 ply	\$340.00
20 5x25 12 ply	Call For Quote
23 5x25 16 ply	Quote
1300x24 10 ply	\$225.00
1300x24 12 ply	\$245.00
1400x24 10 ply	\$255.00
1400x24 12 ply	\$280.00

We Have Lots Of USED TIRES In Stock!

Ask About Our 4 Year Guarantee On Rear Tires Strongest In The Country

We Install Tires On Your Farm
• Centre Hall • Williamsport
• Sunbury • Allentown
• North Penna. • New Jersey
• Northern Maryland



WAGON TIRES

26 1200x12 4 ply	49.00
8 5Lx14 6 ply	41.00
9 5Lx14 6 ply	44.00
9 5Lx14 8 ply	49.50
11Lx14 6 ply	49.00
9 5Lx15 6 ply	42.00
9 5Lx15 8 ply	44.00
11Lx15 6 ply	43.00
11Lx15 8 ply	47.00
25x7 50x15 4 Ply Tubeless	44.00
25x7 50x15 6 Ply Tubeless	49.00
27x9 50x15 4 Ply Tubeless	53.00
27x9 50x15 6 Ply Tubeless	60.00
27x9 50x15 8 Ply Tubeless	65.00
31x13 50x15 6 Ply Tubeless	88.00
31x13 50x15 8 Ply Tubeless	99.00
11Lx15 8 ply tubeless	50.00
11Lx16 8 ply	58.00
11Lx16 10 ply tubeless	74.00
12 5Lx15 10 ply	75.00
12 5Lx16 14 ply	85.00
14Lx16 1 12 ply	140.00
16 5Lx16 1 10 ply tubeless	160.00

Deduct \$5.00 During April



Small Rear Farm

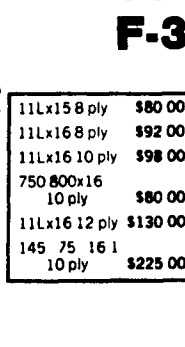
750x20 4 ply	\$9.95
750x24 4 ply	\$4.95
8 3x24 4 ply	\$9.00
9 5x24 4 ply	\$4.00
11 2x34 4 ply	\$135.00
11 2x36 4 ply	\$137.00
12 4x36 4 ply	\$175.00
13 6x36 4 ply	\$189.00



Skid Loader

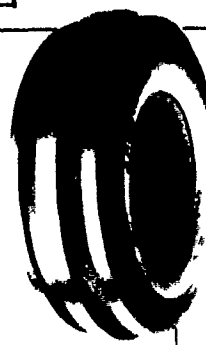
700x15 6 ply	\$65.00
750x15 6 ply	\$68.00
10 16 5 6 ply	\$80.00
12 16 5 8 ply	\$120.00
Steel Shield	
10 16 5 6 ply	\$95.00
Above Tires Shipped To You FREE	

Contractor F-3



11Lx15 8 ply	\$80.00
11Lx16 8 ply	\$92.00
11Lx16 10 ply	\$98.00
750 800x16 10 ply	\$80.00
11Lx16 12 ply	\$130.00
145 75 16 1 10 ply	\$225.00

Front Tractor



400 12	\$22.00
400 15	\$24.00
500 15	\$31.00
550 16 4 ply	\$33.00
550 16 6 ply	\$36.00
600 16 4 ply	\$37.00
600 16 6 ply	\$41.00
650 16 6 ply	\$42.00
75L 15 6 ply	\$50.00
750 16 8 ply	\$54.00
750 16 6 ply	\$50.00
750 16 6 ply	\$64.00
9 5L 15 6 ply	\$55.00
9 5L 15 8 ply	\$80.00
1000 16 6 ply	\$80.00
11Lx15 8 ply	\$75.00
1100 16 8 ply	\$110.00
14L 16 1 8 ply	\$160.00

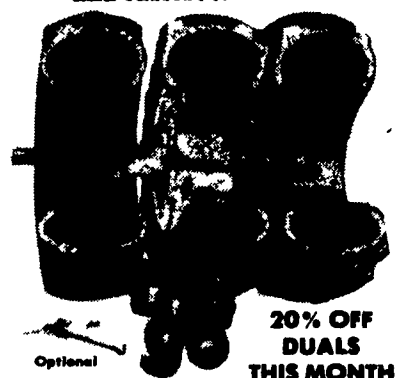
Above Shipped UPS - No Charge

Hi Power Lug



11 2x24 4 ply	100.00
14 9x24 4 ply	150.00
14 9x24 6 ply	185.00
14 9x24 8 ply	190.00
16 9x24 6 ply	190.00
16 9x24 8 ply	210.00
14 9x26 6 ply	172.00
18 4x26 6 ply	235.00
23 1x26 8 ply	594.00
23 1x26 10 ply	600.00
11 2x28 4 ply	115.00
12 4x28 4 ply	130.00
13 6x28 4 ply	145.00
13 6x28 6 ply	160.00
14 9x28 4 ply	160.00
14 9x28 6 ply	175.00
16 9x28 6 ply	220.00
16 9x28 8 ply	240.00
18 4x28 6 ply	275.00
16 9x30 6 ply	230.00
18 4x30 6 ply	270.00
23 1x30 8 ply	650.00
24 5x32 10 ply	750.00
16 9x34 6 ply	255.00
18 4x34 6 ply	299.00
18 4x34 8 ply	325.00
20 8x34 6 ply	459.00
20 8x34 8 ply	510.00
23 1x34 8 ply	889.00
11 2x38 4 ply	140.00
12 4x38 4 ply	168.00
13 6x38 4 ply	179.00
13 6x38 6 ply	198.00
14 9x38 6 ply	224.00
15 5x38 6 ply	225.00
16 9x38 6 ply	279.00
18 4x38 6 ply	325.00
18 4x38 8 ply	365.00
20 8x38 8 ply	

the strongest, most reliable and easiest to install...



20% OFF DUALS THIS MONTH

M & W DUAL SUPER LOCK II

Size	Price	Discount	You Pay	(12.1-Duals)
18 4x30	\$690	\$130	\$520	(12.1-Duals)
18 4x34	\$620	\$130	\$490	(12.1-Duals)
18 4x38	\$630	\$140	\$490	(12.1-Duals)
20 8x38	\$790	\$190	\$600	(16.1-Duals)
20 8x34	\$780	\$170	\$610	(16.1-Duals)

Above Duals Are The Strongest Clamp-On Dual Available Snap-On Also Available
• 10-Hole Dual Axle Available At 20% Discount Now
• All Duals Shipped To Your Farm Free During March & April

Route 230 West

MUMMAU TIRE

Serving Farmers In Penna. New Jersey Northern Maryland and Delaware

Out Of State 717-653-1260 In Penna. 1-800-222-1729

Mt Joy PA