

Hunger group announces openings

SCOTTSDALE, AZ — "If you're looking for a way to help hungry people in the world and have farming or agricultural skills, we can use you today," says Dr. Tetsunao Yamamori, president of Food for the Hungry. "We have openings at our unique Desert Center in Arizona and in Thailand."

The positions are in Food for the Hungry's Hunger Corps, an all-volunteer part of the Christian agency's international operations. A two-year commitment is needed and volunteers must assist in raising their own support.

"Agricultural specialists are essential for many development projects in Third World countries that follow our relief efforts," Dr. Yamamori stated. "People with these skills play a vital role in providing the helping hand needed to break the cycle of hunger and poverty."

The positions in Thailand are for agriculturalist and

agriculturalist/development researcher. Volunteers in these positions will be responsible for working with the local villagers in making the best use of available water and land resources and initiating crops and vegetables suitable for local growing conditions.

The agricultural coordinator needed at the Desert Center will

Gene L. Swackhamer, president of the Farm Credit Banks of Baltimore, was recently elected to the board of directors of the Farm Credit System Capital Corporation.

The election results were announced by H. Brent Beesley, president and chief executive officer of the Denver-based Farm Credit Corporation of America. The FCCA is the central policy-making and service institution for

direct and expand the operation of the agricultural and animal husbandry demonstrations at the Desert Center in order to communicate good stewardship and creative approaches to alleviating the problems of world hunger.

For more information on these volunteer positions, contact Hunger Corps director Cindy Pagliasotti at Box E, Scottsdale, AZ 85252, or call 1-800-2-HUNGER.

Gene Swackhamer elected

of Baltimore, he worked as an agricultural economist and research officer with the Federal Reserve Bank of Kansas City, and served as Deputy Governor of the Office of Finance and Research for the Farm Credit Administration in Washington, D.C. As Deputy Governor, he was primarily responsible for approval and supervision of the funding programs of the Farm Credit System.

Mr. Swackhamer currently is president of the Farm Credit Banks of Baltimore, Maryland. The Baltimore district serves farmers and cooperative borrowers in Delaware, the District of Columbia, Maryland, Pennsylvania, Puerto Rico, Virginia, and West Virginia. Prior to joining the Farm Credit Banks

USDA develops sweet onion

MADISON, WI — Onion lovers, get ready to crunch a new onion hybrid that's wowing consumers in the Big Apple and Michigan.

Known as Sweet Sandwich, the hybrid was released in 1982 by USDA and New York and Michigan Agricultural Experiment Stations. "The hybrid yields well, stores well, has a light interior color, and a mild taste and smell, making it suitable in salads and sandwiches," says Clinton E. Peterson, research horticulturist with the Agricultural Research Service, Madison.

Peterson and Philipp W. Simon, ARS research geneticist, grew Sweet Sandwich for 9 years on organic soil at Palmyra, WI. Sweet Sandwich yields equalled yields from Spartan Banner, Spartan Banner 80, Surecrop and Sentinel, widely grown hybrids in northern areas.

In 1984, Sweet Sandwich outyielded Sentinel, the most widely grown onion variety in New York, in four out of seven locations and equalled Sentinel in the other three locations. In New York, Sweet Sandwich produced the large size preferred for mild onions.

In a survey of New Yorkers conducted by Roy Ellerbrock, Extension Vegetable Specialist at Cornell University, Ithaca, N.Y., Sweet Sandwich was rated milder than Yellow Globe cooking onions by 78 percent of 230 consumers.

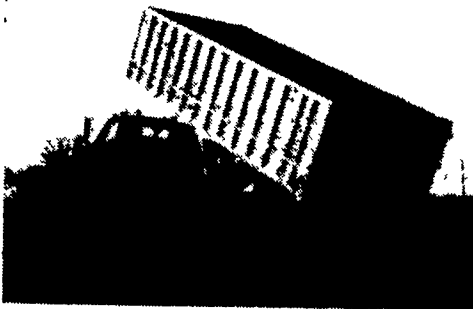
Commercial hybrid seed production of Sweet Sandwich began in 1983. By spring of 1986, adequate seed will be available for packet and catalogue seed distributors.

HEWEY WELDING

Box 2312, Rd 4, Lebanon, PA 17042

717-867-5222

ALUMINUM GRAIN BODIES & ALUMINUM REPAIRS

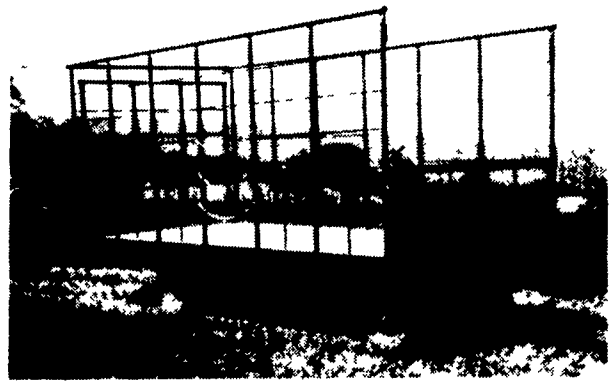


These ultra-light bodies are designed for strength through engineering, not strength with bulk. For example a 16' grain body with tailgate and 48" sides weighs only 1490 lbs. complete. We'll build you any length or any side height up to 60"

Also available

- ★ Double swinging hay hauling tailgate
- ★ Barn door type tailgate
- ★ Slide out cattle chutes
- ★ Diamond Flooring
- ★ Pull out panel tailgates
- ★ Any size grain chute

BEST BUY of the YEAR



- 6" Steel Main Beam
- 2" Vertical Tubing Drilled so that the 1" Horizontal tubing extends Full Length of Wagon
- Front-Side and Rear Loading and Unloading
- 2x8 Pressure Treated Lumber Floor
- 2x6 Oak Cross Beams
- Beds are 8' wide, available in 16, 18 or 21' lengths. Racks are 90" high.
- NEW FEATURE: 6" Channel across back for pushing wagon without damaging bed.

FOR FURTHER INFORMATION, CALL YOUR LOCAL DEALER:

LOST CREEK
IMPLEMENT
Oakland Mill, PA
717-463-2161

MELROSE FARM
SERVICE
Greencastle, PA
717-597-3138

KELLER BROS.
Lebanon, PA
717-949-6501

DUNKLE & GREIB
Mill Hill, PA
717-726-3115

WALTER G. COALE, INC.
Churchville, MD
301-734-7722

TOBIAS EQUIPMENT CO., INC.
Halifax, PA
717-362-3132

NORTHEAST
DISTRIBUTING
West Clifford, Pa.
717-222-9020

VALLEY IMPLEMENT
SALES
Harrisonburg, VA
703-434-9961

CHAMBERSBURG FARM
SUPPLY
Chambersburg, PA
717-264-3533

OXFORD GREENLINE,
INC.
Oxford, PA
215-932-2753

PAUL SHOVER'S, INC.
Loysville, PA
717-789-3117

A.B.C. GROFF
New Holland, PA
717-354-4731

CARLISLE FARM
SERVICE
Carlisle, PA
77-243-4419

CLARK'S FARM SUPPLY
Williamsport, PA
717-494-0060

COW MATS

Use our unique method of installing a one piece mat under a row of cows. Prevents movement of mat and bedding from creeping underneath.

All "row" and single mats are cut from heavy one inch rubber belting.

SAVE
COWS,
TIME &
BEDDING

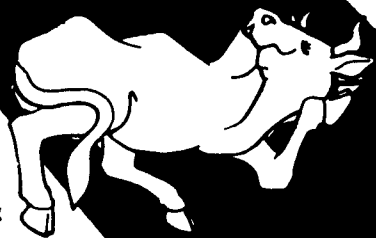
SAVE
40%

on
New Replacement
Belts For Farm
Machines

- Bale Thrower Belts \$70.00
- Grove-Gehl-Int.-S.U. Wagon Box Belts \$120 to \$150

Also Available Bean Picker Belts & Big Round Baler Belts

Flat belts shipped same day as order



Any flat belt can be custom made for your farm machinery (cleats installed). Belts shipped same day by UPS.

For more information, write:

Bob Gabel

Rt. 16, Chaffee, New York 14030

CALL TOLL FREE: 1-800-537-3003

Phone Collect: 716-496-6025

Manufactured By

CLW MANUFACTURING, INC.

R.D. #2, Box 8
Newburg, Pa. 17240

717-423-6794