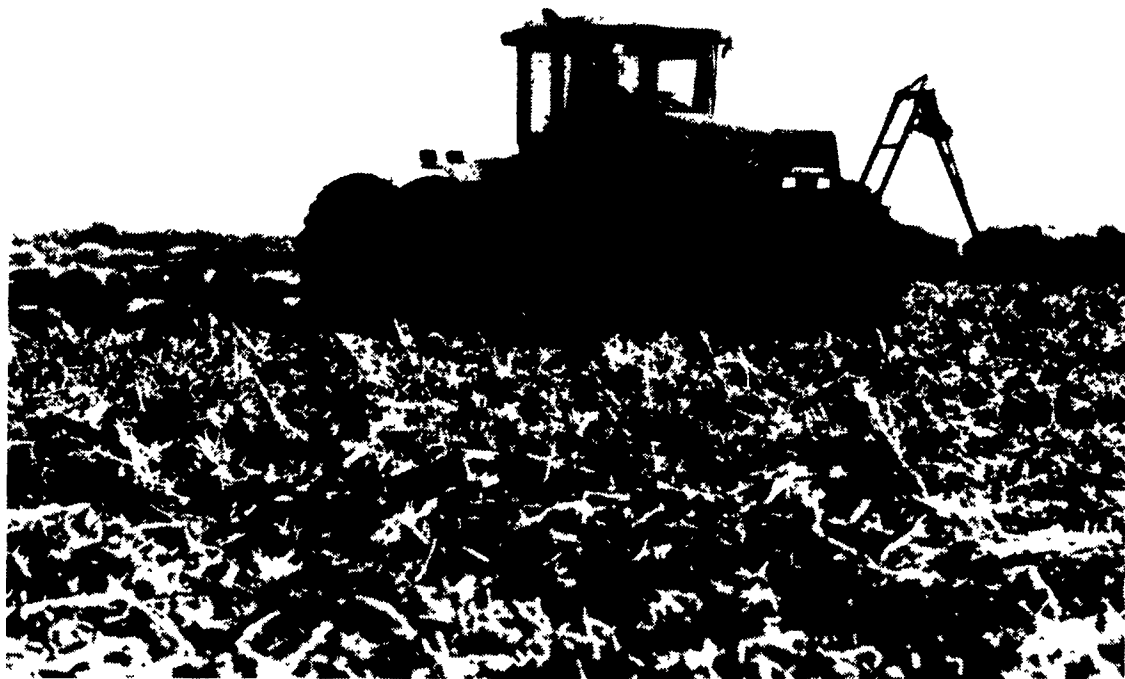


# Steiger's first PUMA rolls off assembly line



The 190-horsepower Puma is the smallest of Steiger's new 1000 Series tractors.

REDWOOD FALLS, MN — The delivery of the first of Steiger Tractor's new PUMA 1000 models was marked by ceremonies March 12th in Redwood Falls, MN.

President of Steiger Tractor, Irvin E. Aal, presented a gold key to Tim Baune, Wabasso, MN, the owner of the first PUMA to be delivered on a retail basis, anywhere in the world.

The PUMA 1000 was introduced in January, and is Steiger's first entry into the under 200 horsepower market. The PUMA is rated at 190 HP. The optional, steerable front axle makes it a four-wheel drive tractor that can be used for both tillage and row-

crop applications.

Baune and his father, Edmund raise corn, soybeans and livestock in southwestern Minnesota, and both farmers said that the Steiger PUMA will be their basic tractor.

The presentation was made at Schoffman's, Inc., a Redwood Falls implement dealer who sold the machine.

Steiger is a Fargo-based, independent manufacturer of large four-wheel drive tractors, and the PUMA represents a competitive move into the two-wheel drive market. Aal said, "The new PUMA reinforces Steiger's reputation for innovation, and opens up a whole new market segment for us."

## State College FFA

The State College FFA recently competed in a skills contest at Clearfield Area High School.

Below is a list of winners.

**Dairy Products:** 1st- Emily Peters, 3rd- Joyce Harpster, 7th- Paula Miller, 8th- Nichole Eckenroth, 10th- Jenny Nuss, 11th- Christy Burns, 19th- Dustin Brown, 20th- Barb Witherite, 21st- Mark Reynolds, 22nd- Michelle Weaver, 23rd- Mike Weaver, 26th- Joy Gates, 27th- Ginger Reynolds.

**Farm Mgmt.:** Bobby Rider- 1st, Doug Moore- 4th, Scott Houtz- 5th, Leigh Fyock- 7th, Tammy McTavish- 8th, Ken Sharer and Denny Frantz tied for 9th, Christy Egglers- 13th.

**Ag Mech.:** Todd Markle- 2nd, Gary Dreibelbis- 8th, Jay Giboney- 12th, Jim Hartswick- 13th, Charles Gummo and Jerry Harpster tied for 14th.

**Small Gas Engines:** Brian Harpster- 4th, Jeff Martin- 5th, Ed Maxwell- 6th, Dan Smith- 7th. Team competition in Small Gas Engines: 2nd and 4th.

The students are now preparing for the next set of contests to be held at Centre County Vo-Tech School.



**bobcat** does it again!  
Introducing The New 642B 32 H.P., 1000 Lb. Capacity Skid Loader

All For  
**\$11,500\***



Pictures of Bobcat Loaders may show other than standard equipment

Operate with low cost efficiency all around the farm, or on the construction site with the new 642B Bobcat front end loader. Work close-up against walls, corners and fences.

Move quickly in and around small openings and areas the bigger machines can't maneuver. Eliminate costly, time-consuming hand labor.

With the 642B Bobcat, do a variety of jobs, with the "easy-on easy-off" attachments available with the 642B Bob-Tach "bolt-on" attachment system.

HEIGHT	WIDTH (LESS BUCKET)	RATED OPERATING CAPACITY
<b>76.0"</b> (1930 MM)	<b>54.0"</b> (1372 MM)	<b>1000</b> LBS. (454 KG)

- Low cost efficiency on the farm or construction site
- Mitsubishi, four cylinder liquid-cooled gasoline engine
- Hydrostatic drive
- Seat bar for additional operator safety, convenience and comfort
- Bob-Tach "bolt-on" system and variety of optional attachments for multiple job versatility
- Tip-up ROPS for easy maintenance

\* Manufacturer's suggested list price excluding freight and attachments



### bobcat DEALERS

Carlisle, PA  
**PETERMAN FARM EQUIPMENT**  
717-249-8338

Hatfield, PA  
**LCL CONSTRUCTION EQUIP. SALE CO.**  
215-962-2910  
Wilmington, DE  
302-998-0128

Honey Grove, PA  
**NORMAN B. CLARK & SON INC.**  
717-734-3662

Martinsburg, PA  
**BURCHFIELD'S INC.**  
814-793-2194

MH Hall, PA  
**BUNKLE & GREN**  
717-726-3118

Quarryville, PA  
**GRONELLI'S FARM SERV.**  
717-786-7318

Chambersburg, PA  
**CLUGSTON IMPLEMENT INC.**  
717-263-4109

Hennedale, PA  
**CHARLES H. SIEPPELA, INC.**  
717-283-3334



Needmore, PA  
**CLUGSTON FARM EQUIPMENT**  
717-873-3250

Sturtington, PA  
**SCAT ENTERPRISES INC.**  
215-767-1711

Harrisburg, PA  
**HIGHWAY EQUIPMENT & SUPPLY CO.**  
717-664-3881

Turkhanock, PA  
**BARTRON FARM SUPPLY**  
717-836-3740

Palm, PA  
**WENTZ FARM SUPPLIES INC.**  
215-679-7164

Towanda, PA  
**S.P.E. INC.**  
717-268-4440

### Central Michigan Tractor & Parts

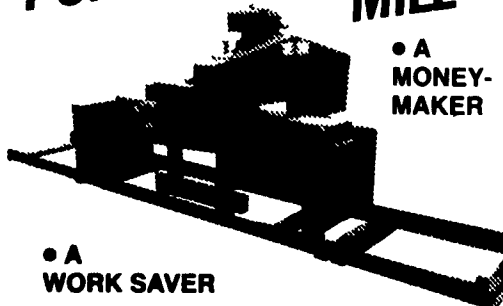
2713 N. US 27, St. Johns, MI 48879



Call The Professionals  
Toll Free:  
1-800-248-9263  
Michigan Res.:  
1-800-292-9233

For a savings of 50% off dealers list on good used tractor & combine parts. Now Accepting VISA & Mastercard

## KASCO PORTABLE BANDSAW MILL



• A MONEY-MAKER

• A WORK SAVER

This rugged sawmill cuts boards any thickness from 1/4" to 9" - it will quarter saw - handles logs up to 24" diameter - cuts boards smooth and straight - Walnut, Oak, Cherry and other hardwoods are no problem to saw - saves you more usable lumber - low price makes this saw affordable for individual use.

Call or write for full details.

**Kasco Manufacturing Company, Inc.**  
Route 3, Box 393 • Shelbyville, Indiana 46176  
Phone (317) 398-7973