

## Public Auction Register

SAT. MAY 3 - 2PM 441  
Acres Land. Butercreek  
Rd., Oswayo Twp., Potter  
Co., PA. Kenneth A. Geyer

Auct. Co., Inc.

SAT. MAY 3 - 9AM  
Tractors, Farm Mach.,

Tools & Misc. of the Late  
Charles F. Kline. Location:  
From I-83 take  
Shrewsbury Exit #1 and  
follow Rt. 851 W. approx.  
2 mis. to RR. Turn left  
onto Spruce St. and  
continue 1/2 mi. to sale  
site. Or from New

Freedom, follow Rt. 851  
E. to RR and turn onto  
Spruce St. Mrs. Charles  
Kline, Owner. Melvin  
Haines & Ralph Bren-  
neman, Aucts.

## ALTON & ALICE MOORE COMPLETE DISPERSAL

Cattle, Machinery, Milking  
Equipment and Produce

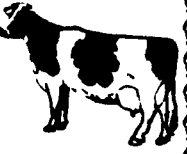
**MONDAY, APRIL 28, 1986**

at 11:00 AM

Malone, N.Y. Located on Rt. 11, just  
west of the village of Malone.

### CATTLE:

155 head of top Grade  
Holstein dairy cattle sell. 130  
cows, 4 bred heifers, 2 bulls,  
balance open heifers. This is a  
good young herd of tie-stall  
cows bred for year-round  
freshening with several at peak production sale  
time. The herd has always been known for high  
production and there is a top group of heifers  
selling. Cattle will be examined by a vet for  
pregnancy and will be tested for interstate  
shipment and have shipping fever shots.



### MACHINERY

Ford TW-20 tractor w/cab; Ford 6610 tractor  
w/cab & only 400 hrs.; SAME Panther 90 4-whl  
drive w/cab & INT. 2350 loader; Bobcat CL-40  
skidsteer; Hesston 6450 self-propelled haybine  
w/10' cut (nearly new); NH #311 baler  
w/kicker (nearly new); NH 162 hay tedder;  
INT 720 chopper w/2-row corn head and hay  
head; NH 707 3-pt chopper w/corn head; INT  
#56 blower; Lamco 2-btr wagon w/roof & 10-ton  
tandem gear; Lamco 2-beater wagon w/8-ton  
gear; NH #36 flail chopper; 55-hp industrial  
motor w/PTO; 4-row INT. #56 planter; 3-pt.  
fert-spreader; sprayer w/300-gal. tank; Mc-  
Curdy gravel box w/fert. auger and HD run-  
ning gear; 4 kicker wagons; 30' smoker  
elevator; dump box w/hyd. dump; feeder  
wagon; INT 5-btm. 16" #550 plow; Oliver 12'  
transport harrow; White 300-bu. tandem-whl  
spreader w/lift gate; 2-whl cattle trailer plus  
misc. small items.

### CONSIGNEE ITEMS

NH #268 Hayliner baler w/kicker; NH #328  
manure spreader.

### BARN & MILKING EQUIP.

Surge 2" SS pipeline w/450' pipe & 5 Surge  
mini-cup units; Mueller 600-gal. bulk tank w/2-  
yr. old compressor; Surge 55-plus vacuum  
pump; Patz gutter cleaner w/high-flite & 450'  
chain; Patz 16' silo unloader; Wic feed cart  
w/gas engine; Wic bedding chopper; 2 large  
barn fans on wheels.

### PRODUCE

2000 bales 1st cutting hay; contents of bulk  
silo 32' wide x 30' long x 8' high (1/2 corn silage &  
1/2 haylage); 16'x34' silo half full w/corn silage.

FARM for SALE at PRIVATE TREATY: At  
the edge of the village of Malone. Owner  
financing available on Real Estate.

TERMS: Cash or good check day of sale with  
ID, nothing to be removed until settled for.

Owners

**ALTON & ALICE MOORE**

For More Information:

Bill Delarm  
Malone, NY Ph. 518-483-4106  
Sale Manager & Auctioneers  
William Kent, Inc.  
Stafford, NY Ph. 716-343-5449

ROGERS



FARM  
EQUIPMENT

MANSFIELD,  
OHIO

**MONDAY MORNING, APRIL 28, 1986**

AT 10:30 EDT

LOCATED: 6 Miles North of U.S. #30 at MANSFIELD, OHIO  
on State Route #39 to Amoy Road then approximately 2 miles  
east.

**IH 3788 - CASE 2670 - CASE 2470 - IH 1486 - (2) IH 560's -  
JD "B" TRACTORS - CASE D 350 DOZER -  
CASE 1845 SKID LOADER - JD 8630 - JD 4320 - JD 3020 -  
MF 1135 - CASE 930 - FORD 7600 - IH 1456 - FORD 8000**

IH 3788 2+2 tractor, 2000 hours, 20.8x38 tires, 4 remote hydraulic outlets,  
PTO & 3 pt.; 1975 Case 2670, 4 WD tractor, 1992 hours, 20.8x34 tires  
w/duals (rice & cane tires inside), 4 remote hydraulic outlets and 3 pt.;  
1975 Case 2470, 4 WD tractor, 3400 hours, 23.1x34 tires w/duals, 4 remote  
hydraulic outlets, PTO and 3 pt.; 1977 IH 1486 tractor, 1218 hours, 20.8x38  
rear tires, 2 remote hydraulic outlets, cab, air, PTO and 3 pt.; 1961 IH  
560D tractor, wide front, 18.4x38 rear tires, 1 remote hydraulic outlet, fast  
hitch, PTO; IH 560D tractor, narrow front, 16.9x38 rear tires, straight  
draw bar, (fast hitch) PTO; 1949 John Deere "B" tractor; 1973 Case D 350  
dozer, 1568 hours, 6 way blade and rops; 1978 Case 1845 skid loader, 718  
hours, gas, hydro w/material bucket and manure fork; 1976 JD 8630  
w/18.4x38 duals, 3 pt., Three remote hydraulic outlets; JD 4320 w/18.4x38  
duals, 3 pt., two remote hydraulic outlets; JD 3020 w/16.9x38 tires, 3 pt.,  
wide front; MF 1135 w/18.4x38 radials, cab, 2 remote hydraulic outlets;  
Case 930 Western 23.1x26 tires, wide front, 2 remote hydraulic outlets;  
Ford 7600 w/18.4x34 tires, cab, 3 pt., 2 remote hydraulic outlets; 1970 IH  
1456 w/18.4x38 duals, 3 pt.; Ford 8000 w/18.4x38 tires, 3 pt., wide front.

**IH AND JD DISC CHISELS - (2) IH 6X16 PLOW -  
KRAUSE 20' DISC - IH SEED BED CONDITIONER -  
HARROGATOR - IH 415 MULCHER**

IH 13 shank disc chisel; JD 13' disc chisel; IH 710 6x16 auto reset, 3 pt.  
plow; IH 720 6x16 auto reset, 3 pt. plow; Krause 925, 20 ft. disc w/rock flex  
w/3 bar Harrogator harrow; IH 20 ft. seed bed conditioner; 24 ft.  
Harrogator; IH 415, 30 ft. flat fold mulcher; Eversman Landplane 2400,  
(NEW) w/danish tine attachment; 14' JD 310 disk; 21' JD 220 disk; 16' AC  
2600 center fold disk w/22" blades; Kasco 20' chisel plow with hydraulic  
fold & 32" shanks, spring loaded; 6x18" JD 1450 plow; 28' JD 330 disk  
w/new rear blades; 4x16" JD 3 pt. plow; 12' DMI chisel plow.

**JD 12X30 and 7 ROW SPLITTER PLANTERS -  
JD ROTARY HOES - CULTIVATOR**

1984 John Deere 7000 front fold 12x30 planter, dry fertilizer w/fill auger,  
no-till, insecticide and monitor; SI 7 row bean splitter w/no till; 1982 John  
Deere 7000 conservation 6x30 planter, dry fertilizer w/fill auger, no-till,  
insecticide; John Deere 420 flat fold rotary hoe; John Deere 20 ft. end toe  
rotary hoe; 8x30 Danish tine hydraulic fold cultivator; 4x36" JD 7000  
planter w/no-till; IH 5100 Soybean Special grain drill; 12x30" AC  
hydraulic fold tool bar planter w/air units & hydraulic marker; 23x7 JD  
8350 grain drill w/grass seed attachment; 29 1/2' Brady field cultivator; 30'  
Hiniker 1530 flat fold field cultivator.

**JD 24T BALER - KICKER BALE WAGONS  
NH 477 HAYBINE - NH SUPER 717 CHOPPER**

John Deere 24T baler w/kicker twine tine; (3) 18 ft. kicker bale wagons  
w/heavy gears and pipe racks; David Bradley 4 bar hay rake; MC 9 ft.  
rotary scythe; 30 ft. double chain elevator; NH 477 haybine; NH Super 717  
Chopper w/1 row corn head & 6' pickup head; Bearcat 6' flail chopper.

**JD 8820 4WD - JD 7720 - IH 1460 - COMBINES -  
JD 224 HD - JD 220 HD - IH 820 HD -**

**(2) JD 643 HDS - IH 963 HD - HEAD CARRIER  
- KINZE GRAIN CART - KILLBROS WAGONS -  
JD 3300 COMBINE**

1983 JD 8820 4WD combine, approx. 750 hours, chopper, 30.5x32 drive  
tires, 16.9x26 rear tires; 1979 JD 7720 combine, 1161 hours, chopper,  
30.5x32 drive tires, 14.9x24 rear tires; 1979 IH 1460, 4 WD combine, 2820  
hours, 28Lx26 drive tires, 14.9x24 rear tires; JD 3300 combine w/13' grain  
platform & pickup reel; JD 224 flex head w/tiger jaw & nylon tooth reel;  
JD 220 flex head w/tiger jaw & nylon tooth reel; IH 820, 15 ft. grain head  
w/tiger jaw & nylon tooth reel; 1983-84 (2) JD 643 corn heads; 1984 IH 963  
corn head; Woods tandem axle head carrier trailer; Kinze 400 grain cart;  
(2) Killbros 375 gravity wagons with 12T Cory gears and telescoping  
tongue; Killbros 450 center dump wagon w/12T double coupled gear;  
Killbros 500 double door side dump wagon w/heavy gear; Walsh side  
mounted saddle tanks w/pump; 12x30" JD cultivator w/end transport.

**(2) IH 4300 SEMIS - IH 2575 SEMI - IH 2000 TRUCKS -  
RAVENS - EAST - HILL ALUM. DUMP TRAILERS -  
WILSON STOCK TRAILER - CHEV. 3/4T PU -  
FORD 250, 4WD PU - 55 GMC - '71 CHRYSLER**

1977 IH 4300 semi, 359,000 miles w/sleeper, 350 Cummins engine, 13 spd.  
trans., twin screw, aluminum Budd wheels w/10x22 radial tires, wet line  
w/tank on tractor, PS and air conditioner; 1978 IH 4300 semi, approx.  
160,000 miles, 350 Cummins eng., 13 spd. trans., twin screw, 10x20 radial  
tires, PS and air cond., wet line w/tank on tractor; 1978 IH 2575 semi,  
390,000 miles, 350 Cummins eng., 13 spd. trans., twin screw, 11Rx22.5  
tires, PS, wet line with tank on tractor; 1970 IH 2000 twin screw tandem  
axle truck w/18 ft. Knaphide grain bed w/60" sides with roll tarp, 238  
Detroit eng., 10 spd. road ranger trans., 10x20 tires; 1974 Ravens  
aluminum dump trailer, 29 ft. box, 34 ft. frame, tandem axle w/3rd air lift  
axle, 10x20 tires, swing gate and roll tarp; 1978 East aluminum dump  
trailer, 30 ft. box, 30 ft. frame, tandem axle, 10x22 tires, swing gate and  
roll tarp; 1967 Hill aluminum dump trailer, 30 ft. box, 32 ft. frame,  
tandem axle, NEW 10x20 radial tires, swing gate and roll tarp; 1970  
Wilson 45 ft. tandem axle livestock trailer; 1981 Chevrolet Scottsdale 3/4T  
PU, PS, AM-FM radio, 305 engine, auto. trans., 41,000 miles; 1977 Ford  
250, 4WD, PU, PS, AM-FM radio, 400 eng., 4 spd. trans., 8,000 miles on  
new engine; 1955 GMC truck w/350 Killbros gravity box w/hyd. auger,  
32,000 miles, 6 cyl. eng., 4 spd. trans., good cond.; 1971 Chrysler Newport 4  
dr., 20,000 miles on new 360 CID engine, excellent condition.

TERMS: Cash or Check with proper I.D.

Not responsible for accidents

Lunch Served

## PUBLIC AUCTION

Hume Grain Dryer,  
Int. T.D. 9 Crawler  
Int. Cub Cadet Riding Mower,  
Farm & Poultry  
Equipment, Antiques,  
Household Goods & Tools  
**SATURDAY, APRIL 26, 1986**  
at 9:00 A.M.

LOCATED: At Anthony's Feed Mill  
along Rt. 183 at Strausstown,  
Berks Co., PA.

ANTIQUES & HOUSEHOLD GOODS 7 pc Mahogany Duncan  
Phyphie style DRS (table w/boards 6 chairs buffet) jelly cupboard  
sq top pedestal table w/8 boards Frigidaire upright freezer L R  
chair music cabinet wdn office desk oak desk chair card table  
w/4 chairs oak chair 7 pc mahogany claw ft BRS by Cling  
(dresser w/mirror chest of drawers twin beds vanity & bench &  
nightstand) 3 pc blonde BRS (vanity w/mirror bed dresser  
w/mirror) oak high dresser w/mirror blanket chests lawn & folding  
chairs 6 pc wrought iron picnic set w/umbrella Zenith port  
record player Electrolux sweeper w/rug attach (like new) C1  
griddles (2) blue dec crocks lg agate coffee pot old mixing bowl  
pots & pans sm elec appliances silverware, sterling silver teapot  
— dish — salt & peppers — candleholders service for 12  
dinnerware set raspberry goblets Copenhagen plates depression  
water pitcher chickens on nests salt sets milk white cut &  
pressed glass Fiesta water pitcher bone china MCC y Stangl  
Ironstone kerosene lights Old Zion's Church — Strausstown  
paperweight German beer stein lead crystal paperweight from  
Sweden 4 pc Bavaria tea set 15 pc candlewick punch bowl set  
Bavaria vases Eisenhower birthday plate assort glasses &  
glassware misc utensils canning jars C1 kettle 2 gal milk pail  
8-day shelf clock string of 5 India brass bells sm C1 safe bank  
old dec stool wicker wash basket & other assort baskets lg old  
National cash register lamps Encyclopedia set assort cookbooks  
stereo system braided rugs comforts blankets linens dollies  
bedding costume jewelry Elgin pocket watch assort foreign coins  
old pictures & frames Xmas deco luggage shoe polisher (like  
new) baby furniture assort toys & games fishing tackle box  
w/supplies & rod set of Anthony Poultry Farm circulars wire egg  
baskets & other misc items too numerous to mention

FARM & POULTRY EQUIPMENT & TOOLS Int T D 9 diesel  
crawler tractor w/V plow & blade McCormick WD6 diesel tractor  
(W F) Farmall H w/loader & snow blade Int #14 cub cadet — 14  
hp w/36 mower Int 2 A #36 snow thrower NH #675 tandem  
axle (275 bu) PTO manure spreader New idea #41 7 sickle  
mower Hesston #180 — 7 riding rotary mower w/elec start Int  
PTO generator — 208 V 37.5 amps — 3 phase Hume 30 hp  
continuous flow grain dryer Int #255 high pressure washer series  
#760 steam jenny Bucyrus Erie pull type hyd earth mover  
Lambert 40 lawn sweeper 1 1/2 ton metalist hyd floor jack 300 gal  
skid tank w/pump 55 gal drums lg elec grindstone lawn roller  
38 tractor chains log chains lg assort of new Int parts (plow  
shims — disks — shears — belts — etc.) nuts & bolts plus many  
assorted farm hand tools

TERMS Cash of PA check day of sale

SALE ORDER Small farm items followed by poultry equipment  
Large Equipment at 11:00 AM Household & Antiques approx  
12:00 Noon

SALE ORDERED BY:

**BARRY L. ANTHONY,  
DONALD L. ANTHONY,  
& GILBERT C. ANTHONY,**

Executors of the  
George & Ella  
Anthony Estate

AUCTIONEER: Kenneth P. Leiby  
R.D. 2, Box 2674  
Hamburg, PA 19526  
215-562-3929  
PAL#AU00541-L

NOT RESPONSIBLE FOR ACCIDENTS

## PUBLIC AUCTION



**New Holland Sales Stables, Inc.**  
New Holland, Pa.



**Tractors & Horse Drawn Farm  
Equipment-Supplies-Small Items**

**FRIDAY, APRIL 25, 1986**

SALE OF SMALL ITEMS 9:00 A.M.

FARM EQUIPMENT 10:00 A.M.

McCormick #9 Mower 7' bar wide wheels; McCormick #9 Mower 5' bar; Stauffer  
2 row transplanter; 5' Howard rotovator; 3 pt. hitch NH #489 Haybine; NH #479  
Haybine; Nicholson Tedder; NH #56 Rake; JD 1240 Corn Planter; NH #28  
Blower; NH #273 Baler; NH #520 Spreader like new; Gehl #95 Grinder-Mixer; JD  
700 Grinder-Mixer.

New customers and out of state buyers must have current bank letter of credit with  
guaranteed amount or cashier checks.

Abe Diffenbach, Manager

For more information contact Abe Diffenbach or Norman Kolb at 717-354-4341.

**NEXT FARM EQUIPMENT SALE MAY 30**