

Oscar Hohn Estate Auction

Farm Machinery
Sat. April 26, 11:30 A.M.,
Elk Lake, Pa.

Off Rt. 267 between Auburn Center and Elk Lake, approx. 8 miles from Montrose, 1 mile from Elk Lake School.

9 Tractors: Massey Model 1100-D turbo low hrs. 2384, dual tires, Cockshutt 50 tractor w/bucket & forks, 4 Cockshutt 40's-good shape and running, 2 Cockshutt for parts, Massey.

Machinery: Model 300 Massey 13' self-propelled combine w/grain head, NH Model 890 2-row corn harvester w/3 heads- grass, corn, & picker grinder, NH Model 489 9' haybine- 1983-like new, 2 Knight forage boxes w/running gear, Dion HD forage box w/tandem wheels, Hustler short table blower, NH Model 275 baler w/thrower, 2 hay wagons w/bale racks, Kuhn tedder, NH 50' elevator, Massey 6 bottom plow, 24' transport harrow, Massey off-set disc- on rubber, JD 4 row corn planter, JD 15 hole grain drill Model FB-B- on rubber, Stoltzfus lime spreader, Lily 3-pt. fertilizer spreader, bedding shredder, NI corn picker, AC 5' cut combine, Int. 990 haybine, NH 346 manure spreader, fiberglass tank sprayer, land rollers for Cockshutt, Clay manure spreader, grain auger, Steel corn crib 12' by 15'.

Oscar was a local farmer for many years. This is a good sale to attend!

Notice: All of Oscar's small tools & equipment will be sold at auction on Sat. April 19, at 9:30 a.m. The buildings are full!

Terms: CASH

Owner:

Katherine Hohn

Auctioneer:

Jerry Burke AU116

1-717-833-5913

Member NE, Pennsylvania & National Auctioneer Assoc.

Tents
Lunch

Taking orders now for baby white tail deer. May birth, \$125 each firm. Serious calls. PA permit. Franklin Co. 717-264-4395.

FREE: McCormick 10 disk grain drill for parts without wheels. John M. Esh, R2, Box 385, Myerstown, PA 17067.

Farm For Lease, 90 acres Timothy Hay, fertilized and limed, \$30 acre. Will consider share cropping. Southern Adams Co. 717-

337-1151
For Rent: 9 Acres, pasture with running water. Jonas

S. Lapp, 3550 Barnsley Chrome Rd., Oxford, PA. 19363. Chester Co.

Public Auction Register

Closing Date Monday 5 00 P M
of each week's publication

APRIL

SUN. APR. 20 - 12:30
Dinner; 2PM Sale. MD's

All-American Top Fifty Angus Sale. Sponsored by MD Angus Assn. Sale Mgrs., Tom Burke/Dick

Beck, American Angus Hall of Fame. Mike Jones, Auct.

MON. APR. 21 - 7PM 200 Head. Located Moundsville, WV. WV Cattlemen's Assn.

MON. APR. 21 - 10:30AM 75 Acre Farm, Farm Eq. Located: N. of Rt. 30 on Bull Rd. or Roosevelt Ave. Ext. to Church Rd. on right, 1st farm on left. York Co., Manchester Twp., PA. Lester Sunday.

Blaine N. Rentzel, Auct.

MON. APR. 21 - 4PM U.S. Coins, Foreign Stamps, U.S. First Day Covers. Located Farmersville Fire Hall, E. Farmersville Rd., Farmersville, Lanc. Co., PA. T. Glenn & Timothy G. Horst, Aucts.

MON. APR. 21 - 10AM Farm Eq. 4 mis. S. of Willow Hill Turnpike interchange, 10 mis. N. of Ft. Loudon off Rt. 30, on Rt. 75, along Wineman Rd., Franklin Co., PA. Robert A. Woods. J. Robert Meyers, Auct.

MON. APR. 21 - 10AM Lumber Building Material. Located Goods Auction, 111 North Maple Ave., Leola, PA.

MON. APR. 21 - 10AM East Greenville Welding & Machine Shop. For: Herman Grill, Fruitville Rd., East Greenville, PA. From Rt. 29 in E. Greenville take 6th St. SW 3 blocks to State St., turn right and continue 1 1/2 mis. to auction site. (State St. becomes Fruitville Rd.) Sanford A. Alderfer, Inc.

TUES. APR. 22 - 4PM Farmersville Auction in Farmersville, Mis. E. of Brownstown, Lanc. Co., PA.

TUES. APR. 22 - 7PM Special Spring Feeder Cattle Sale. Carlisle Livestock Market, Exit 12 Off I-81, Carlisle, PA. 717-249-4511.

TUES. APR. 22 - 6PM 29th Annual March of Dimes Auction at the Green Dragon Farmer's Market & Auction. Merle Z. Eberly, Chairman, 215-286-5183; Adam Z. Zimmerman, Co-Chairman, 717-733-7634.

TUES. APR. 22 - 5PM Antiques, Camping Trailer, Collector Plates & HH. Located 617 Penn Ave., West Reading, PA. Sale to be held in alley to rear of Nagle's Jewelry Store. Terms by: Jenny B. Miller Estate. T. Glenn & Timothy G. Horst, Aucts.

PUBLIC AUCTION Farm Machinery, 4 Tractors, 30 Feeder Cattle

To be held at our farm, 3 miles east of Muncy, PA, along Kepner Hill Rd. Auction arrows off Rt. 442 near 442 and 42 junction. Lycoming Co.

SATURDAY EVE., APRIL 26, 1986

6:30 p.m. SHARP
(No Small Items)

The following sales from two farmers. 4 tractors: Ford 754 Super 4, 4WD; Case 730 D; JD 620; Farmall M; John Deere Equipment includes: 70 skid steer loader; 336 thrower baler; (2) 35 choppers; 1207 haybine; 465 barrel spreader; 30 combine; 350 Balance head mower, etc.; 2 Papec forage wagons; Ford 11 tooth chisel plow; AC 600 corn planter; Ford 618 blower; IH 1150 grinder mixer; Case 4-16" semi plows; Robot veal calf feeder, plus a few local consignments.

30 Feeder Cattle All From One Farmer. Fresh off the farm, Angus Hereford Cross from 350-600 lbs.; Boumatic 2" SS pipeline for 8 stalls, extra pipe, 4 units, pump, just taken out of barn.

TERMS: Cash or good check with proper ID. (No Out of State Checks)

Conducted by:
Fralely Auction Co.
717-546-6907
AU1194-L

Lunch

PUBLIC SALE WEDNESDAY, APRIL 23, 1986 11:00 A.M.

2 1/2 miles South of Everett, Pa. on State Route #26 and one mile off State Route to sale site. Watch for sale signs at former Roy Stayer Farm.

New Idea Mow/ditioner; 4 Bale Wagons; International trailer plows, 2 bottom, 275 New Holland Baler with kicker; front end loader; Wisconsin Motor; mounted cultivator; dump cart; McCormick draw mounted mower; 2 hay loaders; papec chopper; cut off saw; 3 pt. Baltic spreader; Davidson post hole digger; trailer road grader; large 2 wheel trailer; disk; Ford combine power take off; John Deere Elevator 24'; 806 International tractor wide front end; super H International Tractor; M International Tractor; H International tractor for parts; P.T.O. manure spreader; quick hitch 4 bottom plows; spring tooth harrow; trailer 3 bottom plow; New Holland flail chopper; McCormick 13 hoe drill on steel; bee equipment; feed boxer; wind mill; snow plow; 3 home comfort cook stoves; 2 row corn planter, Maytag wringer washer; GE deep freeze; other misc. items.

Lunch served

Not responsible for accidents

Owner

NELIE HURST ESTATE

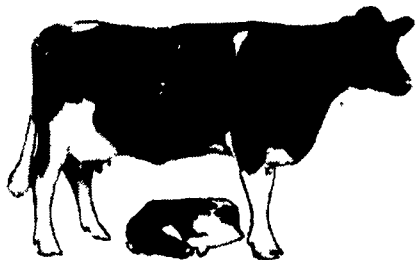
Auctioneers

Robert Grubb & Sons

AU001294-L

Everett, Pa. 814-652-

2547



400 HEAD

YEARLY HEIFER SALE

400 HEAD

FRIDAY, MAY 9 10:30 D.S.T.

Shady Lane Dairy Sales Inc., 1/4 Mile West Of Quarryville, Pa.

400 HEAD REGISTERED AND HI GRADE HOLSTEIN HEIFERS

All local heifers right off the farms. This is one of the finest groups of heifers we have ever had the opportunity to offer. We have been consigning for this special sale since Jan. 1, 1986.

JUST A SAMPLE OF WHAT WE HAVE TO OFFER

* 30 Registered and ID Grade's, Calfhood Vac. From 19,000 lb. herd ave. due to discounting dairying from Mr. & Mrs. Harold Bryson. A Great Group of Heifers. A real group from S.A. Kreider and Family, Quarryville, Pa.

* 30 Head Registered and Hi Grade heifers from Paul Hannum and Family, Chester Springs. One of the best that walk's. Mostly Calfhood Vac.

6 Outstanding Heifers from Paul Kratz and Family.

* 75 head from 1 owner from 3 Farm's from Lancaster Co.

* 27 head all Registered Springing and Fresh heifers from top York Co. herd.

FRESH HEIFERS

150 Head Calves to Breeding Age • 250 Head Due May Till Oct.

All from John's Free Herds

30 Day T.B. And Blood Test- Preg. Examined

Motel, Trucking, Holding Pens Available To Accommodate You In Any Way We Can.

Consignment Very Much Appreciated—No Auction Heifers!

Last Year Heifers Went To 8 States.

No Charge On Feed For Holding Until May 13th.

Sale by
SHADY LANE DAIRY SALES, INC.
RD 4, Box 463
Quarryville, PA 17566

OWNERS

Glenn D. Fite-717-786-2750

David L. Fite-717-786-1725

Day Or Nite

"Six Generations of Sales & Service"