

**MAILBOX MARKET  
FOR SALE**

steering, good cond. Berks Co. 215-689-9354.  
Boggs potato grader and antique wheat cleaner, \$25 each. Chester Co. 215-593-5345.

JD unstyled model B tractor, \$800 or trade for JD G model. Adams Co. 717-334-1824.

Saddlebred brood mare, chestnut, 16H, Star Heart Stonewall Granddaughter. Stephen L. Stoltzfus, R2, Box 64-A, Honey Brook, PA 19344.

Grain drill 13 row, semi-mounted Int., \$575; auger Butler, 26"x4", \$135. Colora, Cecil Co., MD. 301-658-3767 eves.

13' Stoltzfus spreader for poultry manure, grain, potatoes; 2 Jamesway shuttle stroke units; 1964 Ford cattle truck, 21'. Berks Co. 215-562-4133.

115 Chuckwagon w/3 beaters and roof on JD running gear w/or without running gear, fair cond. 717-359-4172.

181.19 acre farm, 42 stanchion barn, silo, milkhouse, 9rm house. Possible owner financing. \$130,000. Bradford Co. 717-297-3923.

720 Choppe Int. w/2R corn and grass head, corn head. Rebuilt grass head, used very little. Ready. Kent Co. 301-348-5421.

Registered Suffolk sheep and crossbred ewes, 35 head, 1 ram. All good ewes. Cecil Co., MD. 301-658-3756.

JD 14T baler w/ejector; NI 12A manure spreader, 18' steel bale throw wagon, best offer. Bucks Co. 215-766-8719.

Wisconsin VE4 w/clutch and reduction gear. Lanc. Co. 717-656-9734.

For parts: Oliver 18 combine; Minneapolis Moline single row corn picker. Bucks Co. 215-346-8709.

NI 292 cut-ditioner, \$1,000; front end loader off ACD-14, \$400; 50 used stantions, Fox chopper pickup and 2 row corn head, \$800. Wyo. Co. 717-942-6119.

New 60" wide, 3 PTH heavy duty rototiller, \$900. Berks Co. 215-683-7230.

1962 Chev., 4 dr., SDN, 6 cyl. std. Runs OK. Needs frame behind rear axle repaired. Some rust, \$300. Bedford Co. 814-928-5373.

Oliver OC-6 crawler diesel, 3 pt. hook-up; JD 60, 3 bot. rollover plow. 215-262-9781.

1980 Ford 3/4 ton pickup, 60,000 miles, like new cond., 351 motor, radio, heater, \$4,750 firm. 609-452-8903 before 9 AM.

(2)1967 volkswagon for parts; 300 Bantam eggs for hatching; 7' locust post. Lanc. Co. 717-872-6038.

60 used 36" belt drive 1/2HP fans without shutters, \$100 ea. while they last. Leb. Co. 717-866-7565.

Walnut lumber 5' or 5000 nice dry; NH 2HP engine; also clutch pulley & cart for 5HP NH. R. Landis, RD 1, Box 397, Newville, PA 17241.

School desks; also small day care wooden desks and chairs, office desks, metal top tables, oak chairs. Berks Co. 215-682-2011.

McCormick Deering sickle bar mower, \$70; homemade utility trailer converts flat bed, \$250. Berks. After 3:30PM, 215-775-1277.

TIRES: 8.00x175, 6 ply, 4/\$25; P 225R75x15 radial snows, 2/\$20; IH 4x4 PU, 9,000 lb. GVW, \$400; loader for Ford 8N, 9N, Jubilee, \$75. Lanc. 717-367-5560 eves.

Kesco milk dumping station, dryer included, \$175; also rabbit cages and supplies. Lanc. Co. 215-445-4978.

2 female pygmy goats, reasonable. Lanc. Co. 215-445-5617 anytime.

1963 Chev. truck, 60 Series, Swartz tilt back bed with winch, 350 engine, 2SP rear, \$4,800. 215-445-6032.

Choice from two saddlebred driving horses, 3 yrs. old, green broke, good drivers. Amos Hoover, RD 1, box 377C, East Earl, PA 17519. Lanc. Co.

Badger barn cleaner chute, 18', used only nine months, \$650; IH 56 blower, good condition, \$550. Tioga Co. 814-367-2735.

600 gal. milkeeper bulk tank, painted in good condition. Mifflin Co. 717-899-6646.

IH T20 crawler, \$700. Northumberland Co. 717-425-2160.

3 six-hole Smidley feeders and 2 two-hole Smidley feeders along with other hog equipment. Franklin Co. 717-532-2554.

2 holstein bulls 9 weeks old. Juniata Co. 717-734-3625 eves.

1968 Ford C850 tandem, rebuilt motor, good tires, \$3,000; 1973 Ford F600, \$1,800; heavy 11' disk, \$1,800. Perry Co. 717-444-3968.

Fast hitch for 560, \$295; Onan 3500 watt gen. needs ign. work, \$50; antique potato planter, \$50. After 5PM or weekends, 717-244-1344. York Co.

20' green chop feeding box, painted red, new condition, \$420. York Co. After 8PM, 717-993-2232.

**Lancaster Farming Saturday, April 19, 1986-D13**

NH 56 crop chopper, \$195; second cutting alfalfa, \$70. Lanc. Co. 717-442-9377.

Ford tractor, 901 dsl., power steering, \$3,000; JD loader 2010, \$500. York Co. 717-927-6618.

Wooden roof shingles never used, weathered barn boards, firewood, window shutters. Berks Co. 215-488-6743.

9x7 overhead garage door, \$40; 12x12, \$100; 16x7, \$50; 8x6 1/2, \$35; Dodge PU truck, 1978. Berks Co. 215-488-1541.

Pine barn siding, barn beams, oak T&G flooring, German siding, shutters, air dried walnut and pine lumber. Cumberland Co. 717-766-0621.

Open buggy, hydraulic brakes, very nice condition, reupholstered and painted 1 yr. ago. Samuel B. Lapp, 4141A Redwell Dr., Gordonville, PA 17529.

Cabbage crates, 4-wire wooden, and 50 lb. wax boxes 1.9 bu. wax and 1 bu. 3-wire wooden used once, 50 cents ea. Lanc. Co. 717-354-7739.

Clipper grain cleaner, \$50. After 5PM, 717-739-4708.

JD 1240 plateless corn planter, fert., insect, good condition, \$500. 215-445-4649.

8'x14' tilt trailer, single axle, 15" wheels. No tail lights. \$300. Southern Lanc. Co. (Holtwood) 717-284-2254.

Brownie 314 pruner 18HP 3 wheel 2 cyl. B&S engine, hydraulic saw pruner bin forks, picking bag. Lanc. Co. 717-653-5661.

MF 300 combine, 10' grain head, 2R corn head, 1977 model, excellent condition. Adams Co. 717-359-5707.

Three point weed sprayer; Oliver angle heavy duty disk; 12' McCormick Deering harrow. York Co. 717-235-1985.

Mechanical transplanter; Century farm sprayer pull type; IH 544 tractor, WF, with loader; JD chug wagon; IH 400 cyclo corn planter. York Co. 717-637-8172 eves.

French Log Bunnies, 6 weeks old, solid and mixed colors, great pets. Millersville, Lanc. Co. 717-872-2327 eves.

Used wire rabbit pens, good condition, feed dishes and water crocks. York Co. 717-764-5584.

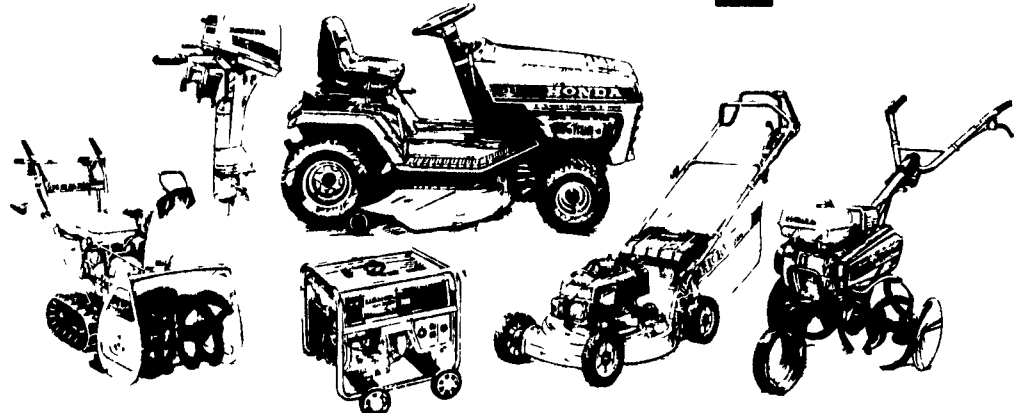
4 Reg. Jersey heifers; (2) 6'x6' plate glass; 2 hot water unit heaters. Adams Co., PA. 717-334-7060.

Motorcycle '82 Yamaha 400, excellent condition, 5,000 mis. York Co. After 7PM, 717-993-3350.

JD 520 sprayer with 200 gal. tank and 30' booms, Agrotec foamer marker; AC E centrifugal pump. York Co. 717-235-1735.

Rotiller made in U.S. by Howard Co. 40" Catagory 1 or O1 hitch, \$700. Leb. Co. 717-838-4075.

# Honda's All-Star Lineup.

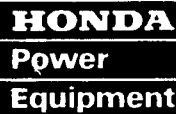


We've got Honda All-Star Week lined up for you at your local Honda Power Equipment dealer. April 17 through April 27, 1986.

Come in and take a look at the winning team—Honda Power Equipment. All built for rugged reliability with the advanced Honda four-stroke engine.

And take a chance at winning a free trip to the major league baseball game of your choice during July or August, 1986. And any one of thousands of other prizes, too, in the Honda All-Star Sweepstakes.

So come take a look at the team that gives you the home field advantage. Either way you win.



**SPECIAL EVENT  
PARKING LOT SALE  
Sat., April 26, 1986**

**Your Newest Honda  
Outboard Dealer**

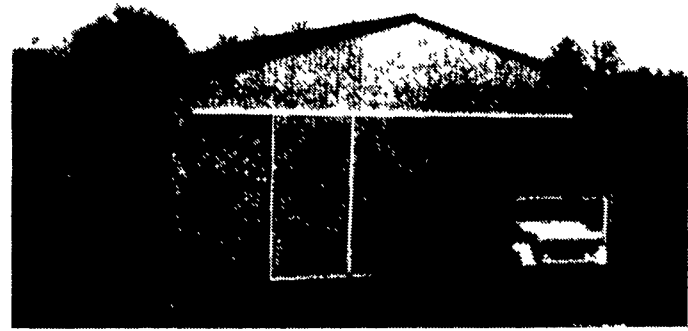
**LANCASTER  
HONDA  
"HONDA AT ITS BEST"**

2350 Dairy Rd., Lancaster, PA  
Phone (717) 898-0100  
Service No.: (717) 898-3273  
Hours: Mon.-Fri. 10 a.m. - 8 p.m.  
Sat. 9 a.m. - 3 p.m.



No purchase necessary Void where prohibited. Complete details at participating Honda dealers Ohio residents may enter by mailing name and address to a participating dealer For optimum performance and safety we recommend you read the owner's manual before operating your Honda Power Equipment.  
©1986 American Honda Motor Co., Inc

## STOLTZFUS BUILDERS Honey Brook, PA



**We Specialize In Pole And Frame Buildings  
CALL US FOR AN ESTIMATE**

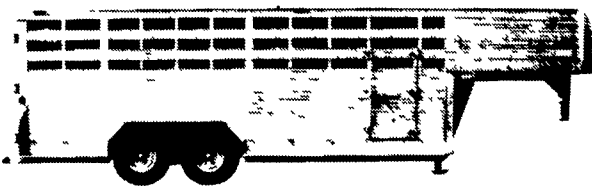
(215) 273-3495

(215) 273-3456

**TRANS EQUIPMENT, INC.  
LANCASTER COUNTY**  
Rte 272, P O Box 415, Brownstown, PA 17508  
717-839-2095

## ALL ALUMINUM MINI "B" GOOSENECK TRAILER

**BUILT WITH THE SAME PARTS AS THE  
BIG "CIRCLE B" TRAILERS.**



### STANDARD FEATURES

- Approx. 40% Lighter Than Steel
- Corrugated Aluminum Tread Floor
- Full Opening Divide Gate
- Full Opening Rear End Gate with 1/2 Slide
- 7' Wide x 6'6" Inside Height
- Walk-in Side Door

New & Used Trailers In Stock

Manufactured by the 'Big' Trailer People Possum Belly - Late Liner - Livestock Trailers

**BARRETT  TRAILERS, INC.**