



Green Hills Auction Center
Route 568, R.D. 1, Box 380
Mohnton, PA 19540
(215) 856-5000

PUBLIC SALE

GREEN HILLS AUCTION
Garden Equip. & Tool Sale
SATURDAY, APRIL 19, 1986
Starting 9 A.M.

Articles from two local estates & others.
Wheel Horse C120 8 speed 12HP Garden tractor; Wheel Horse 10HP w/30 in. mower & snow blower; Allis Chalmers B-112 riding tractor; two utility trailers; Delta 9" radial arm saw w/stand; Sprunger 6" shaper-planer w/cabinet & 1HP Motor; Belt disc. sander 1/2 HP Motor; Amerind Mackissick shredder-chipper w/3HP gas. eng.; 22 gal. port. sprayer w/3HP gas. engine; Power mowers including Lawn Boy, Sears, etc.; Shop vac.; 2HP circular saw; mitre box & saw; Stanley saber saw; orbital sander; 12' telescoping orchard pruner; 28' ext. ladder; Green Machine #3000 gas. grass edger; wheel barrows; two wheel cart; step ladders; John Deere 19" chain saw; Rem. 12" elec. chain saw; port. high speed grinder; Simplicity tiller; Mossberg 20ga. shotgun; two lathes; Sears Radial arm saw; Delta band saw; table saw; Port. hand tools; snow blower; small air compressor; battery charger; bench grinder; elec. edger; Lot garden tools; Lot carpenter tools; and Many other items.

Lunch counter on premises
Samuel M. Ferraro
Auctioneer Au276-L
Phone 856-5000

PUBLIC AUCTION

OF FARM & MILK EQUIPMENT, STRAW
Location: 3 miles north of Odessa, Del. turn on Truck Rt. 896, 1st farm on right. Coming south on US 13, 3 miles south of St. Georges Bridge turn right on truck Rt. 896, 1st farm on right.
FRIDAY, APRIL 25, 1986
10 A.M.

986 Int. diesel tractor w/cab, air, 18.4x38 tires (2369 hrs), 706 Int. diesel tractor w/wide front, 400 Int. gas tractor w/narrow front & fast hitch, C2 Gleaner combine w/cab, 14' grain head & 4 row wide corn head, N.H. #890 chopper w/2 row #890 R2 corn head & grass pickup head, N.H. L 445 skid loader w/5' bucket & manure forks (just rebuilt), N.I. #326 2 row corn picker (8 roll), #990 Int. haybine, #67 N.H. hay baler, #271 N.H. hay baler, #56 N.H. hay rake, 50' N.H. bail hay carrier, #10 Int. 16 tyne grain drill w/fertilizer & small seed boxes, #5400 White Plant-Aire planter w/fertilizer & insecticide boxes, 2 Gehl # Dw 910 silage wagons, #55 Int. 11 tyne chisel plow, #540 Int. 4x16" plow, V W A 14' J.D. transport disc, 11' Brillion solid wheel packer, #50 Int. stalk chopper, #1010 stockliner, N.H. bale hay wagon, #33A Int. manure loader, #365 N.H. tank manure spreader, #555 Int. manure spreader w/upper beater, J.D. 200 gal. sprayer, #315 Int. cultimulcher, 4 funnel body wagons, J.D. wagon running gear, Little Giant 42' elevator, Lely 3 ph seeder, 6' 3 ph blade, Waldon 8' front mount blade, Pittsburgh 4 row 3 ph cultivator, 9" post hole digger, 1 point subsoiler, #56 Int. silage blower, Winco single phase 120-240 pto generator, 2 ton chain hoist, Int. 3 section 12' springtooth, gates, iron post, misc.

1960 V-6 truck (no body).
CATTLE EQUIPMENT
1500 gal. Mueller bulk tank with 2-2 horse compressors, 4 Delaval milker units with 1 1/2" glass pipeline for 22 stalls, Redi-Hot 82 gal. electric hot water heater, #75 & 76 Delaval milker compressors, 9 ton Butler bulk feed bin, feed cart, Harvester 18"x60' feeder conveyor with rotary brush, Harvester 18"x60' belt conveyor, Harvester Wa-Ro-Matic mill & scales, 2000 bushels of high moisture corn, 600 bales straw, 16 week Cryo Biological System with app. 200 breedings from Atlantic, Sire Power & ABS.
Terms: Cash or Approved Check
Owners
W. EUGENE BULLEN & SON
302-378-2750
Sales Mgr & Auctioneers
C.T. Scuse & Sons, Inc.
302-653-7530
Lunch

Public Auction Register

Closing Date Monday 5:00 P.M.
of each week's publication

TROXELVILLE AUCTION GALLERY
LARGE 2 DAY

ANTIQUE AUCTION
WED., APRIL 16th at 1:00 P.M.
AND
APRIL 17th at 10:00 A.M.

Troxelville, Pa. From Harrisburg, Pa. Take Rt. 15 North, Go To Rt. 104, Left To Middleburg, Go Left At Light At Square Onto Rt. 522 To Beaver Springs, Turn Right Four Miles To Auction. For Info. Ph: (717) 658-7141.

PARTIAL LISTING:

10 Highly Carved Oak 3 Pc. Bedroom Suits, 15 Round And Square Oak Tables (Some Super Claw Feet Tables & w/Leaves), 12 Fancy Curved Glass Oak Chinas, 10 Sets Of Fine Pressed Back Oak Chairs, 6 Ornate Oak 1, 2, & 3 Door Bookcases, 2 Lions Headed Bowed Door Oak Side-By-Sides, 5 Single Door Ornate Carved Oak Side-By-Sides, 10 Fancy High Oak Beds, Fantastic Carved Oak Bonnet Chests, Outstanding Quarter Sawed 4 Sect. Leaded Glass Cl. Ft. Bookcase, 3 Ice-Boxes, 5 Very Nice Oak Wardrobes (1 Unusual Small Size & Some w/Mirrored Doors), Many Ornate Pressed Back Oak Rockers, 10 Nice Oak Chests w/Mirrors, Many Oak Lib. Tables, Stands, Ornate Oak Chevell Mirror, 2 Finest Carved Oak Hall Seats (Qt. Sawed), Many Oak Washstands & Ornate Odd Dressers, 6 Nicely Carved Oak Servers & Sideboards, 4 Exceptional Oak Roll Top Desks, Very Nice Oak 2 Pc. Flatwall Cupboard, Oak Floor Model & Table Model Phonographs, Oak Partners Desk, Oak Nite Stands, Drop Side Larkins Oak Sewing Tables, Many Odd Oak Chairs, 2 Rare Oak Tilt Top Tables, Rare Oak B&S Corner What-Not, Other B&S Items, Ornate Oak Princess Dressers, Nicely Carved Eastlake Oak Slant Front B.C. Top Sect., Very Nice Oak Hotel Washstands w/Mirror & Towel Bar, Golden Oak, B.C. Top Cylinder Desk, Ornate Pressed Back Oak High Chairs (W/Children, Eagle, Some Carved), Super M.T. Eastlake Chestnut & Oak 3 Pc. Bedroom Suit, Mint 3 Pc. M.T. Wal. Vict. Bedroom Suit, Mint B.C. Top Wal. Cylinder Desk, Ornate M.T. Wal. Sideboard, Sun Burst Wall, Hall Rack, Mint Wal., Bowed Footboard Vict. Bed, Finest M.T. Wal. Dressers, Vict. Stands & Chairs, Many Early Blanket Chests, Early Jelly Cupbs., Fine Dry Sinks, Pierced Tin Pie Safes, 1 Dr. Nite Stands, Other Early Stands & Primitives, Quilts, Super B&I Single Bed, Fancy Dbl. Iron Beds, Table Lamps, Old Radios, Rare Mahogany & Depression Furniture, Very Fine Pictures, Large Estate Of Very Good Glassware (China, Dep., Porc., Cut & Patterned Glass, Tiffany & More); 2 Pc Hutch Sink; Set Of 4 Windsor Chairs w/Bamboo Turning; Early Candle Box; Early Pine Hutch Table; Early Plank Seat Arrow Back Childs Rocker; Rye Basket; 7 Pc. Wash Bowl & Pitcher Set (Soft Paste Sponge), Large Sponge Ware Bowl, Early Soft Paste Pitcher W/Cows, 2 Pcs. Of English Staf-fenshire Dogs (1 Tan, 1 White & Red); Iron Dog Door Stops, Various Colors Of Nice GraniteWare, Large Collection Of Early Blue Soft Paste Dishes, Early Bennington Pitchers (Milk), Moyer Harrisburg Dec Jug, Art Glass Vase (Carnival), Approx 25 Pcs Flow-Blue (Meat Platters, Bowls, Capital Plate, Serving, Bowls, Cups & Saucers, Pitchers, Bouillon Cups), Early Sat-Soume Tea Set, Approx 60 Check., Austral, & Bavarian Moose Head Pitchers (All Sizes & Shapes); Various Early Cow Creamer, Childs Cup & Bowl Breakfast Set, Fantastic 60" R.P. Oak "S" Roll Top Desk w/Carved Pulls & Full Interior, Large Headed Curved Glass Oak China, Rare Mirrored Door Oak Corner Wardrobe, Ornate Oak Corner China w/4 Doors, 2 Large Suitable For Back Bar Style Oak Sideboards, Other Roll Top Desks, Chinas, Buffets, Side-By-Sides, Bedroom Sets, Etc
There Will Be More Furniture Arriving By Sale Day. This Will Be The Last Undated Additions.

AUCTIONEER NOTE: This Will Be A 2 Day Complete Dispersal Of Estate & Quality Consignments Filling 2 Large Auction Complexes.
ORDER OF SALE: April 16th Selling Furniture, Primitives, Smalls, Glassware From Regular Gallery.
April 17th Selling Furniture All Day From Large Warehouse. (Come Prepared To Buy - We Have Many Truck Loads Of Furniture To Dispose Of).
TERMS: Cash, Good Check, Travelers Checks, 6% PA. Sales Tax If Not Dealer Exempt.
AUCTIONEERS:
C.P. Jacobs, Jr.
(PA. Lic. #AU002333-L)
Roy L. Martin
(PA. Lic. #AU00058-L)
Sales Manager: Joe Herman
(717) 658-7141
"Watch For Fine Antique Sale
Up Coming In May"

APRIL

WED. APR. 16 - 11AM Duane Hunsinger Dairy Dispersal. 50 Registered & Hi-Grade Holstein Cattle. Located Lynmar Chaffee Farm, LeRaysville, PA, on Rt. 467. Glenn P. Shores & Howard W. Visscher, Aucts.
FRI. APR. 18 - 6:30PM Complete Machinery Dispersal for FHA of
WED. & THURS. APR. 16 & 17 - 1PM & 10AM

Respectively. Large 2-Day Antiques Auction. Troxelville, PA. From Harrisburg, PA, take Rt. 15 N., go to Rt. 104, left to Middleburg, go left at light at square onto Rt. 522 to Beaver Springs, turn right 4 mis. to auction. Sale Mgr., Joe Herman. C.P. Jacobs, Jr. & Roy L. Martin, Aucts.

Juniata Co. At Shady Lane Dairy Sales, 1/4 mi. W. of Quarryville off Rt. 372 on Oak Bottom Rd. Managed by: Shady Lane Dairy Sales, Inc. Glenn D. & David L. Fite, Owners.

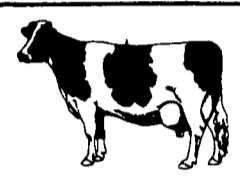
SAT. APR. 19 - 10AM Gen'l. Contracting Eq. & tools, Office Eq. Robin Hood Drive, Etters, PA. South on 83, Exit Yocumtown, turn right to Robin Hood Drive. Estate of Charles Shuler. Claude C. Wolfe, Auct.

SAT. APR. 19 - 12:30PM National Milking Shorthorn Sale at the Guernsey Barn, Lancaster, PA. 51 Head. Sponsored & Managed by: American Milking Shorthorn Society.
SAT. APR. 19 - 9AM Dairy Herd, Farm Machinery, Antiques, etc. Located on Rt. 247, 2 mis. from Creamton, 5 mis. from Waymart, 12 mis. from Pleasant Mount, PA. On the former Jim Smith farm. Wm. & Cathy Van-Sickle, Owners. Wayne Weaver, Auct.

The Public Auction for Carl Haycock, Tuesday, April 15, has been **CANCELLED FOR THE PRESENT TIME.** Sorry for any inconveniences.

Arthur Hanna, Auct.
201-995-7862

NEW HOLLAND SALES STABLES, INC.



12 Miles East of Lancaster, Pa, just off Rt. 23, New Holland, PA.
SPECIAL DAIRY SALE CONSIGNMENTS
For
WEDNESDAY, APRIL 16, 1986

REAL FANCY LOAD OF NEW YORK STATE HEIFERS
All from one farm, some bred and many ready to breed.

Consigned by
D.H. RUMSEY

For More Information Contact:

Abe Diffenbach
717-354-4341

Norman Kolb
717-397-5538

11TH ANNUAL

CONSIGNMENT SALE

Located on the Gordon Wood Farm on Rt. 15 between Tioga and Lawrenceville, Pa., across from Woodshed Restaurant.
SATURDAY, APRIL 19, at 10:00 Sharp

Equipment listed as consigned.
J.D. 4020 diesel tractor; N.H. L225 skidsteer loader w/2 buckets; N.H. 718 chopper like new (chopped approx. 100 acres); 1 row corn & the latest #770 pickup head fits most N.H. machines pickup will be sold separately; Badger 5N3 beater self unloading box w/roof & heavy gear; New Idea #10-1 row corn picker; Case 4 bottom trailer plows; '77 150 Dodge 4x4 pickup truck 318 engine & extra set of tires; '68 G.M.C. pickup; Hesston PT10 haybine; '77-3/4 ton Chev. 4x4 pickup; '74-3/4 ton G.M.C. 4x4 pickup as is; Case 300 gas tractor N.F. line P.T.O. & external hyd.; IHC 12' 401 harrows; JD 16A flail chopper; IHC 350 chopper w/1 row corn & pickup heads; J.D. 494-4 row corn planter; New Idea 323 1 row corn picker; Walsh 250 gal. transport weed sprayer; N.H. 2 beater self unloading box & gear; old front for self unloading box; 600 gal. Muller bulk tank & units nice; Universal 1 1/2 in. glass pipe line complete w/4 units, vats & approx. 210' of line; Beaty barn cleaner w/approx. 200' chain. This milking equip. & cleaner must be seen at Hakim Zagashtoko farm, Catoc, N.Y., turn off Rt. 15 in Lawrenceville by red light go across river bridge, turn right, then left on Deposit Hill Rd., go approx. 3 miles to farm or ph. 607-524-6316; D14 Allis Chalmers tractor; N.H. 55 side rake; IHC side rake 3 pt. blade; JD 3 pt. hitch mower; horse drawn manure spreader; NH 68 baler; Case running gear; 3 pt. hitch cultivators; Oliver tractor plows; dump trailer; drill press; NH blower; New Idea flail manure spreader; Maywraith 45'6" grain auger; Snowco 45'8" grain auger; Century 200 gal. weed sprayer; 3 pt. fertilizer spreader; JD 3800 2 row narrow head chopper; JD 35 chopper w/1 row corn & pickup heads: AC 6 1/2' pull type combine; '66 GMC truck tractor; 2-12x14 motorized overhead doors; (2)-18.4x34 tractor tires; Oliver gas tractor; NH 510 spreader; 3 pt. round bale mover; NH 200 bu. tank spreader; Corn drag elev. 12'; 5 hsp. vacuum pump; pr. 16.9x38 snap on duals; pr. 18.4x34 snap on duals; pr. 18.4x38 tires; 10x38x9 bolt rim; pr. 18.4x34 tires on 9 bolt rim can be used as duals; AC 904 haybine 9'; NH 510 spreader; JD 6 bottom semi mount plows; 2 Richie heated waterers; clay shuttle bunk feeder approx. 80'; Patz bunk feeder; Case 6 bottom semi-mount plows w/side/hill hitch; Gehl 99 hopper blower; 1 metal corn crib; 1 wire corn crib; approx. 40 tie stalls & petitions; barn columns 4' approx. 200' barn cleaner chain & clay unit; Brillion 16' transport harrows; Case 12' disk; M Farmall.
There are a lot of items not in yet so watch next weeks paper.
Terms- Cash or Good check.
Sales Mgr.
GORDON WOOD..... Auctioneer:
Mansfield, Pa. Arlow Kiehl
Ph. 717-549-4901 AU-000488-L
For the most in advertising coverage & preparing your sale call Wood's Auction Service.
Lunch Available Including
Chicken BBQ