

# Seven Hundred attend Bucks-Lehigh credit meeting

700 member/stockholders and guests attended the 1986 stockholders' meeting of the Berks-Lehigh Valley Farm Credit Associations on Friday, April 4, 1986 in Allentown.

Bernard C. Flory, President, reported that, despite the present stressful situation in agriculture, the Berks-Lehigh Valley Associations remain financially sound. The members maintained a 96% current status on loans during 1985 — remaining above the

districts performance standards. As of February 28, 1986, the combined loan volume of the Berks-Lehigh Valley Federal Land Bank Association (FLBA) and Production Credit Association (PCA) was over \$96 million. The association serves 1838 members in Berks, Schuylkill, Northampton, Monroe, Carbon, and Pike Counties.

Flory further stated that the problems of the nationwide farm credit system, of which Berks-Lehigh Valley Farm Credit Ser-

vice is a part, have affected the local association, indirectly, by increasing the cost of money, thus causing the interest rates to remain a present levels. He did say, however, that several new programs were made available

this week to combat the high interest rates.

Robert Leiby, Lehigh County Extension Director, served as the election chairman and announced the following winning candidates: elected to serve 3-year terms: on the FLBA Board of Directors; Charles L. Diehl, Bangor and Ernest O. Miller, Hamburg; on the PCA Board of Directors; Ellis R. Kunkel, Kempton.

The 1987 nominating committee members who were elected are: FLBA; Raymond L. Kulp, Kutztown; Diana M. Wessner, Ger-

mansville and John K. Shafer, Tamaqua; to the PCA committee; Joshua M. Grim, Breinigsville; E. Daniel Leatherman, Hamburg, and Ralph W. Zettlemoyer, Fogelsville.

Farm credit is a nationwide credit co-operative which lends money to farmers, farm-related business owners, aquatic producers, and rural home owners. The local Berks-Lehigh Valley Association is part of the Baltimore District, one of 12 districts throughout the United States and Puerto Rico.

## Horse, mule show slated

MT. AIRY, MD — The Maryland Draft Horse and Mule Association will sponsor an Open Driving Schooling Show for draft horses, pleasure horses, mules and ponies on Sunday, May 4, 1986. Ribbons will be awarded in numerous hitch classes (only) that will be designed for maximum satisfaction of both novice and experienced drivers, no matter what type of equine animal is hitched.

The object of the "show" is basically a fun-type day, where experienced teamsters can share knowledge and knowhow with those who might not have the fancy horses and equipment, nor the inclination to tackle major events.

To this end, the class organization is considerably less formal than that used at the major structured shows, with judging standards reflecting an emphasis on driver/animal effectiveness.

Many experienced drivers and teamsters will be on hand to assist, and it is planned to have the judges explain their grading results as

they are made for all those interested.

Hitch classes will be included for novice animals, novice drivers, singles, teams, multiple hitches, two and four wheeled drawn vehicles, "drive then ride", and an obstacle course. Some of the more informal classes will be open for light and heavy animals, while the more traditional cart and wagon classes may be divided by type, according to demand that day.

Mt. Airy, MD is located about 12 miles east of Frederick MD and 25 miles west of Baltimore immediately adjacent to Interstate Route 70. Access to the Mt. Airy Volunteer Fire Co. fairgrounds is convenient and direct from the interstate.

Lunch will be available on the grounds; but in any case there is fast food within walking distance. For more information on classes and directions, write to: MDHMA; 8830 Dollyhyde Rd., Union Bridge, MD 21791. Telephone numbers: Days (301) 829-0333 or 831-5777; evenings (301) 898-9654.

# AGRI-INC.

## Custom Built Farm Buildings Designed To Your Needs

### Specializing In Dairy Systems:

- Tie Stall & Free Stall Complexes
- Horse Stables & Riding Arenas
- Machinery Sheds
- Metal Buildings For Commercial Use

NEED RENOVATIONS...

OR A NEW BUILDING?

**DON'T DELAY — CALL TODAY**



FARM & COMMERCIAL BUILDINGS

RD 4, EPHRATA, PA 17522

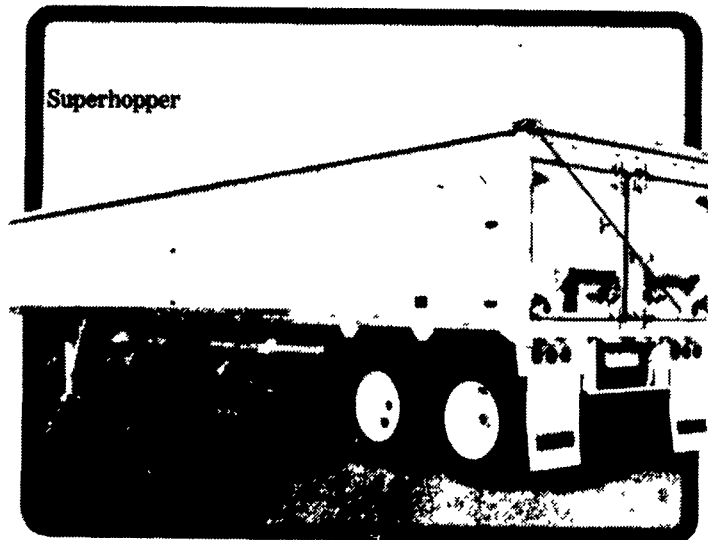
Located In Farmersville

PHONE (717) 354-4271



REYNOLDS  
ROOFING & SIDING

## BUY A 1986 TIMPTE LIGHTWEIGHT GRAIN HOPPER NOW



Got Grain? Then get the trailer that is Timppte tough... the Super Hopper. It's not only built to take it...it's also built to cut fuel costs. The Super Hopper is lightweight and aerodynamically designed to reduce wind drag. When there's grain to be hauled, Timppte does the haulin' best and pulls a lot easier than the rest.

**M.H. EBY, INC.**

P.O. Box 127

Blue Ball, PA 17506

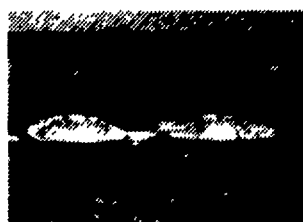
(717) 354-4971



## With Kuhn Mower-Conditioners

Kuhn has engineered Mower Conditioners that cut hay up or down, wet or dry, even in toughest conditions. They operate fast, resist clogging, and condition hay thoroughly to speed drying time up to 50%. There's less chance of "rained-on hay," and the palatability is improved with a Kuhn Mower Conditioner. Highly efficient oval disc cutting system severs crop at base and feeds it through free

swinging fingers and reversible conditioning comb. As grass goes through conditioning comb, natural wax is stripped. Conditioner is adjustable to 20 positions to suit crop and weather. Adjustable swathboards provide light fluffy swaths to ensure fast drying times. Cutterbar is height-adjustable to suit terrain and incorporates blade protection features. Built tough to last! Call or write for more information.



FC250—5 oval cutting discs  
8' cutting and transport widths  
FC300—6 oval cutting discs  
10' cutting and transport widths



Please Contact Us For Your Nearest Dealer



Distributed By  
**HAMILTON  
EQUIPMENT, INC.**  
567 South Reading Road, P.O. Box 478  
Ephrata, PA 17522  
Telephone (717) 733-7951