

Public Auction Register

CONSIGNMENT SALE

OF FEEDER PIGS & FEEDER CATTLE
FRIDAY, APRIL 18, 1986
 at 6:30 P.M. Sharp

Held at Keister's Middleburg Auction Sales, Inc., Rt. 522, 3 miles east of Middleburg, PA., 5 miles west of Selinsgrove, PA.

Early consignments accepted
 Bring a load - buy a load

For information call
 717-837-2222, 717-966-2856
 or 717-523-0360
 Terms: Cash

Owners,
DON & WALT KEISTER

Auctioneers:
 Bryan Imes & Ray Long
 Restaurant Open

ABSOLUTE AUCTION

New & Good Used
 Lawn & Garden Equipment
 Tractors - Tillers
 Mowers - Accessories

SATURDAY, APRIL 19, 1986
 Auction At 12:30 (Sharp)

(Everything Sells Regardless Of Price - No Reserve)

LOCATION: 322 East of Ephrata to traffic light in village of Hinkletown. Turn left to Martindale. Turn left on Gristmill Rd. & follow auction signs to auction. Lancaster Co.

New & Demonstrator Equip.

8 HP. Ampro Rear Tine Tiller W/Select Direction; 5 HP. Ampro Rear Tine Tiller; 5 HP. Ampro Front Tine Tiller; 16 HP. WORK HORSE MOWER TRACTOR W/42" CUT BY WHEEL HORSE; Dixon 425 Demo 11 HP. W/42" Cut; Yanmar YLS 26 3 Pt. Log Splitter; Tanaka TBH 300 Back Pack Blower; 19" Push Mower; Toro Electric Trimmer.

NEW TOOLS: Sets Of Screwdrivers; Pliers, And Socket Sets; Electric Tape; Metal Gas Cans; And Assorted Parts. (GOOD USED EQUIPMENT); 5020 ALLIS CHALMERS TRAC.; G ALLIS CHALMERS W/PLOW & CULTIVATOR; 424 DIXON 11 HP. W/42" CUT; 424 DIXON 11 HP. I.C. ENGINE W/42" CUT; 422 Dixon 42" Cut; 12 HP. Massey Hydra W/42" Cut; 14 HP. MASSEY HYDRA W/48" CUT; John Deere 300 W/46" Cut; 20 HP. Model HT. Bolens W/Hydrostatic & Hydraulic Lift & Power Steering & 52" Mower Deck And Snow Plow Blade; Massey 7 HP. W/34" CUT; Massey 626 W/26" Cut 6 HP.; 11 HP. SNAPPER RIDER W/42" CUT; 8 HP. Snapper Rider W/30" Cut; 6 HP. Snapper Rider; 12 HP. Wheel Horse W/42" Cut; 8 HP. Wheel Horse 36" Cut, I.H. 105 Cadet Hydro W/42" Cut; 16 HP. GRASSHOPPER W/61" DECK; 16 HP. GRASSHOPPER W/52" DECK; 21" Lawn Boy Mulcher; 3 HP. Atlas Tiller; 5 HP. Parker Thatcher; SRM 140 Echo Trimmer; 4 HP. Bolens Mulch Mower; And Other Mowers & Equipment By Sale Date Not Listed.

NOTE: Terms Cash, No Out Of State Checks Unless Authorized By Auctioneers Or Owners. All Items Listed Will Be Sold Regardless Of Price With No Reserve. Ideal Opportunity To Purchase Your Lawn & Garden Equipment At Absolute Auction.

REFRESHMENTS AVAILABLE

Terms By:
DANIEL Z. MARTIN
LAWN CARE OF PA.
 215-445-4541

Auction Conducted By:
 Randal Kline, Lloyd Kreider
 Roy Good, Jr. Auctioneers
 Lic. AU-000499-L



Dairy and Livestock Sales

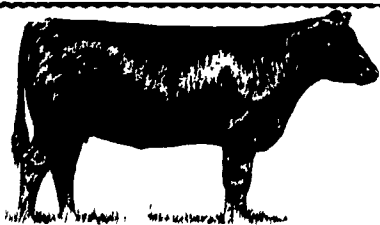
FRI. NOV. 21 - 6:30PM
 Feeder Pig & Feeder Cattle. Keister's Middleburg Auction, along Rt. 522, Middleburg, PA.

FRI. NOV. 21 - 11AM
 Complete Purebred Herd Dispersal located 5 mis. S. of New Holland, 4 mis. E. of Intercourse, New Holland, RD 2. Terms by: J.S. Diener & Sons. Paul Snyder, Auct.

HERD IMPROVEMENT SALE

100 Bred Gilts York, Hamp, Duroc, York-Land
 30 Boars York, Hamp, Duroc.
 50 Open Gilts York, Hamp, Duroc, York-Land.
 100 Club Pigs York, Hamp, Duroc & X-Breds.
 10 Top York Gilts Jan., Feb., March Pigs
 10 Top Duroc Gilts Jan., Feb. & March Pigs
 10 Top Hamp Gilts Jan., Feb & March Pigs.
 We had 25 Grand & Res Champion Pigs from this farm in 1985

Roger Schaad
 Rt1 Beverly, Ohio 45715 Ph. 614-558-2348
 Zanesville Fair Ground
 April 19, 7:00 P.M.



PUBLIC SALE
19th ANNUAL FEEDER STEER SALE
SATURDAY, APRIL 19, 1986
 Starting - 12:30 P.M.

Located 12 miles west of York, PA - 1/4 mile east of East Berlin, PA along Rt. #234.

110 FEEDER STEERS 110

110 head of steers weighing from 300 to 700 lbs. consisting of Charolais, Herefords, Angus, Black White Face, Crossbreds and Holsteins. All are acclimated and wormed - The right kind of cattle for pasture. Steers will be sold at 1:00 P.M.

FARM EQUIPMENT & FARM ITEMS

J.D. 520 Tractor w/power steering; live P.T.O., 3 pt. Hitch for 520; 28 A.C. Disc Harrow; J.D. Quick Mount Cultivators; J.D. #5 3 Pt. Hitch Mower; 2 Wheel Trailer; 2 Hyd. Cylinders; 3 Log Chains; Scraper Blade; Small Disc Harrow; Case Transport 28 Disc Harrow; 2 - 14" - 38" Tractor Tires; Barn Fan; Hog Feeder; Wheelbarrow.
 Clair R. Slaybaugh, Auctioneer
 Lic. #856
 R. Kluck, Clerk

C.L. "Cot" Jacobs
BARRY L. JACOBS
 East Berlin, PA

AYRSHIRES
The NOW Breed
GRAND NATIONAL SALE

FRIDAY, APRIL 25, 1986 — 12:00 NOON

FARM SHOW COMPLEX — HARRISBURG, PA

QUALITY SELECTED AYRSHIRES FOR MAXIMUM PROFIT PRODUCTION — TEST — TYPE — LONGEVITY

47 Foundation Profitable Ayrshires

9 YOUNG COWS

An Ace's Sultan	3 Generations Excellent, has	2-5	17,060	4.1	705
A Gallant Man	Dam has	6-11	19,660	3.9	757
A Big Business	Dam has	6-3	21,290	4.3	914
A Victorious Chance	Dam has	11-4	19,790	4.0	789
A Flashy Classic	Dam has	4-7	19,290	3.6	688
A Cove Creek Sampson	Dam has	2-5	16,410	4.2	689

23 BRED HEIFERS

A Royal Command	Dam has	3-9	16,040	4.6	731
A Hammonds Oracle	1985 Jr All American Senior Yearling				
A Royal Command	Dam has	5-11	15,500	4.6	715
A Cavalier Special	Dam has	11-1	16,822	4.5	760
A Royal Command	Dam has	4-6	16,860	4.2	703
A Star Man	Dam has	5-10	18,380	4.8	884
An O Prophet	Dam has	3-11	19,100	4.1	790
A Gallant Man	Dam has	5-7	17,470	4.1	715
A Hi Inspiration	Dam has	5-8	17,629	4.0	713
A Canary Flashy	Grand Dam has	5-3	16,390	4.3	709
A Marbrae Captain	Dam has	4-11	18,007	4.5	805.

6 OPEN HEIFERS

A Madge's Boy	Dam has	3-5	20,300	4.0	813
A Gallant Man	Dam has	4-5	18,350	4.2	777
A Jon's Nomad	Grand Dam has	3-5	20,380	4.2	848

7 HEIFER CALVES

A Royal Welcome	Dam has	5-7	16,320	4.3	700
A Brown Bomber	Grand Dam has	6-5	20,610	3.5	714
A Royal Command	Dam has	3-6	17,330	4.7	806
A Hi Champ	Dam has	7-0	18,631	3.8	701
A Jon's Boy	Grand Dam has	3-6	20,710	3.7	768

Dams and Granddams with records to over 20,000 pounds. Many with over 100,000 pounds lifetime and high butterfat and protein test. Majority are scored Excellent or Very Good.

Sale Managed By

AYRSHIRE BREEDERS ASSOCIATION

For Information Or Catalogues Contact:

Ayrshire Breeders Association
 Brandon, VT 05733 (802) 247-5774

or

Earl Keefe
 R#1 Box 188, Millersburg, PA 17061
 (717) 692-3738