

# PUBLIC AUCTION

**MODERN RESTAURANT  
EQUIP. & SUPPLIES-  
OFFICE EQUIPMENT**

**THURSDAY, APRIL 17, 1986**

10:30 A.M.

**LOCATED:** 2901 Whiteford Rd. York, Pa.  
- Across from Meadowbrook Rest. (Rear of Parking Lot).

## RESTAURANT EQUIPMENT

2 Wolf ranges, 1 double Commercial Convention oven, 2 ice machines, grill, deep fryer, ice cream freezer, metal racks, complete fire extinguisher system, freezer rack, ice bin, salad bar (stainless), large & small mixing pots, salad bowls, 100 gal. hot water heater, exhaust fan, steam jenny (Bottled gas), steam carpet cleaner, double salad sink, trays, hood for dishwasher, sandwich bagger, vacuum cleaners, 30"x4' long grill (4 burner), Frymaster deep fryer, floor buffer, double dressers, tomato slicer, washer & dryer, commercial steamer, cigarette machines, fans, air conditioners, juice machine.

Cafeteria trays, dinner plates, sandwich plates, salad bowls, coffee cups, dessert plates, monkey bowls, soup bowls, and cups, sugar shakers, salt & pepper shakers, menu board, knives, forks, & spoons, dishwashing racks, 4 1/2'x164' shelving, Security uniforms & hats, casserole dishes, snow shovels, mops, brooms, ash trays & tables.

-1982 Chev. 1/2 ton Pick-up - 20,000 mi., Excellent Cond. - 1 Xerox Model 3109 Copier, 2 Panafax Model MV 1200 Telecopier, Lannier 5 Station Action Line Recording System, large Screen TV, 6 pool tables (slate), 4 desks, 1 safe, file cabinets, pool sticks, extra slate for pool tables, & many items not mentioned.

**NOTE: INSPECTION - 1:00 to 4:00 Wednesday April 16 and 1 Hour Prior to Sale on Sale Day.**

**TERMS: CASH OR GOOD CHECK.**

**HOLLERAN MANAGEMENT CO., INC.**

2901 Whiteford Road, York, Pa.

% Tim Koller

717-757-9442

**AUCTIONEER: Blaine N. Rentzel**

Emigsville, Pa.

717-764-6412

Lic. #761-L

MARVIN VAN BENSCHOTEN

# FARM MACHINERY DISPERSAL AT AUCTION

The undersigned having discontinued farming has authorized a dispersal at auction to be held on the farm located on the Amenia-Bangal Road, 2 1/2 miles north of Route 44, Amenia, N.Y. Arrows posted from Route 44 to the farm.

**FRIDAY, APRIL 18, 1986**

11:00 a.m. Rain or Shine 11:00 a.m.

**TRACTORS, HAY EQUIPMENT  
BARN CLEANERS**

Partial listing includes: Ford 8000 diesel tractor; Kastew 21 dual wheel forage wagon; 3 A.C. forage wagons on N.H. gear; N.I. forage wagon on N.I. 633 gear; Grimm hay tedder; farm hand wheel rake; crop sprayer; I. 4-row corn planter; 16 ft. stock trailer; Comstock transport disc; N.H. 315 baler & kicker; Hesston 2000 100 chopper w/2-row corn & PU head; J.D. 16A flail; I.H. disc; 2 J.D. springtooth harrows; 3 Hi-side hay wagons; 2 Jamesway shuttle stroke barn cleaners; Clay elec. feed cart; 26' hay conveyor; Patz barn cleaner w/100 ft. of chain; Ford 618 blower and many other items too numerous to mention.

Terms of Sale: Cash or good check day of sale. New buyers must present a bank letter.

Sale by order of

**MARVIN VAN BENSCHOTEN**

Amenia, New York

L  
U  
T  
H  
E  
R

**D. LUTHER AUCTIONEER**

David D. Luther, CAI

Amenia, New York

373-9900/8215

NY Toll Free 1-800-D. LUTHER

USA Toll Free 1-800-372-0099

L  
U  
T  
H  
E  
R

# PUBLIC AUCTION

**FARMEQUIP.,  
FARMALL H TRACTOR,  
BALERS, HAYBINE &  
TOOLS**

**SATURDAY, APRIL 19, 1986**

9:30 A.M.

Located 4 Mi. N. of Tamaqua, off Rt. 309. leading from Village of Stillcreek to Weatherly, Carbon Co., Pa.

**EQUIP.:** Farmall H Tractor, N.H. Model 268 baler w/PTO bale thrower, Int. Model 37 baler w/PTO thrower, N.I. spd. wheel hay rake, Int. 5 bar hay rake, N.H. 7' Model 467 Haybine (like new), N.H. 7' grass mower, 14' 4 wheel rubber tire wagon w/hay sides, 12' 4 wheel rubber tire wagon, 14' Int. rubber tire flat wagon, Int. 12 hoe grain drill on rubber w/seeding attach., 26' hay & grain elevator on rubber, 24'3" grain auger, Cardinal 18' grain conveyor w/3/4 h.p. motor, McCormick 6' combine w/bin & motor, Wood Bros. 6' combine w/bin & motor, McCormick PTO flail chopper, N.H. Model 33 flail chopper w/blower, Int. 1 row silage harvester, Int. hi clearance 3 gang trip bottom trailer plow, Wood Bros. 1 row PTO corn picker, Int. corn planter (parts only), Int. disc, N.H. Model 328 120 bu. PTO manure spreader, 3 pt. row marker, hand plow, platform scale, 10x40 cement stove silo, comm. rubber tire cement mixer w/motor, front end bucket, Wac-away seed cleaner, Wisconsin engine, blacksmith forge w/blower, 2 wheel rubber tire waterer, wheelbarrow, saw buck & blades, hand snow blower w/Briggs Stratton engine, anvil, baler twine, etc.

**TOOLS:** Socket sets, miter & hand saws, planes, wood chisels & clamps, levels, tool boxes, open & box wrenches, draw knife, cow bell, egg baskets, mason tools, come-along, Micrometers - Starrett inside - round & shape, Craftsman set of 6 micros., scrap iron, bowling alley machine, shooting gallery video game, Oak dresser, Fedders 8,000 BTU air cond. (like new), 1964 4 dr. Chrysler, Lincoln 4 dr. etc. **PART LIST - COME EARLY - Not many small tools.**

Sale by

**FOSTER GERHARD**

Houser Aucts AU-000445L

717-386-5631 or 2191

& 215-799-2396

# PUBLIC SALE

Due to the death of my husband, Carl B. Shifflett, I will sell the following located at his home located in Greene County approximately 1 mile West of Standardville, Va., turn on Rt. 810 - Go approximately 6 miles - Turn right on Rt. 631 - 1/2 mile to sale. **WATCH FOR SIGNS.**

**SATURDAY, APRIL 26, 1986**

**AT 10:00 A.M.**

4440 J.D. tractor with cab and air with 1820 hrs. - Nice, 10 hp. Cub Cadet lawn and garden tractor, 148 loader, G & T 350 bu. PTO grain dryer, Massie Ferguson 300 combine with 3 row corn head and grain table, J.D. 68 grain trailer tank PTO, D7 Cat. with blade, 7000 J.D. 4 row planter with liquid nitrogen tanks, 520 Oliver hay baler, Cletrac crawler, 9 ft. side draft Bush Hog disc, J.D. 301 fertilizer spreader, 2 farm wagons - 1 with flat bed, 10 shank Dunham Lehr chisel plow, White 348 4 btm. automatic reset plow, Lilly rotovator, 3 pt. hitch wood saw, pasture harrow, ProMo tank, 3 pt. hitch field sprayer, 50 ft. grain elevator PTO - like new, 2 10,000 gal. steel tanks, 2 smaller tanks, approximately 15 40 ft. rafters, Ford hay conditioner, Baltic seeder, Stake saw, Miller electric welder with gas engine, 3 pt. hitch J.D. subsoiler, 100 gal. fuel tank with pump, 10 hole hog feeder, trailer axles, 2 900/20 tires, and other articles found around a farm too numerous to list.

**ALSO:** 1971 GMC truck with flat dump, 1958 Int. L180 with new rebuilt engine with 5+2 transmission with flat dump with two cylinders, 1978 1/2 ton Ford truck with 54,000 miles, 1973 Chevrolet C 20 Van in good condition, 2 trash trucks for parts.

**TERMS: CASH OR GOOD CHECK. Nothing to be removed until settled for. ID required to acquire bidding number.**

**AUCTIONEER:**

Edgar A. Bohrer

Va. Lic. #43

1-304-229-8354

**CLERK: Carolyn L. Bohrer**

**EDITH SHIFFLETT**

1-804-985-2240

NOT RESPONSIBLE FOR ACCIDENTS  
ON PREMISES

LUNCH RIGHTS RESERVED

**AUCTIONEER'S NOTE:** This equipment is in excellent condition and field ready.

# Public Auction Register

Closing Date Monday 5 00 P M  
of each week s publication

SAT. APR. 26 - 9AM Farm Mach., Butcher Tools, Rare Collectibles. Location: Thomasville, Pa. From Rt. 30 W. approx. 4 1/2 mis. from York, turn right at San Remo Inn onto Beisecker Rd. and proceed 1/4 mi. to sale. Or from Rt. 224 W. Berlin

Rd.), turn left onto Beisecker Rd. and proceed 1/2 mi. to sale. Charles M. Rife, Owner. Melvin Haines & Ralph Breneman, Aucts.

SAT. APR. 26 - 8:30AM Utility Construction Eq. For: Hinkels & McCoy,

Strinestown, Pa. Vilsmeier Auction Co., Inc. SAT. APR. 26 - 9AM Farm & Poultry Eq., Hshld., Antiques and Tools. Located along Rt. 183, Strausstown, Berks Co., Pa. At Anthony's Feed Mill. For: Ella Anthony Estate. Kenneth P. Leiby, Auct.

SAT. APR. 26 - 8:30AM 33 Acre Farmette, Farm Eq., Antiques, Hshld., Guns, Tools. Located 4 mis. N. of East Berlin on Rt. 194 or 9 mis. S. of Dillsburg on Rt. #194 thence turning W. onto Baker Watering Trough Rd., 1 mi. in Reading Twp., Adams Co., Pa. John A. Roland, Owner. Clair R. Slaybaugh, Auct.

SAT. APR. 26 - 10AM Farm Mach., Campers, Trucks, Cars, Personal Prop., Boat, Snowmobile, Guns. Location: Upper Tulpehocken Twp., Berks Co. From Reading area take Rt. 183N to Strausstown turn left at blinker light, thru Strausstown stay left at (Strausstown Fur Shop) or From Lebanon area take Rt. 419 to Rt. 78 & 22 E. to 1st Exit (Strausstown Exit) turn right & follow signs. Terms by: David & Rhoda Kegerreis. Kline, Kreider, Good, Jr., Aucts.

# FARMERSVILLE AUCTION

**TUESDAY, APRIL 15**

3:00 P.M.

In Farmersville, 3 mi. east of Brownstown, Lanc. Co., Pa.

General Household Goods Sale.

See Lanc. Newspaper Sat., April 12 For Full Listing.

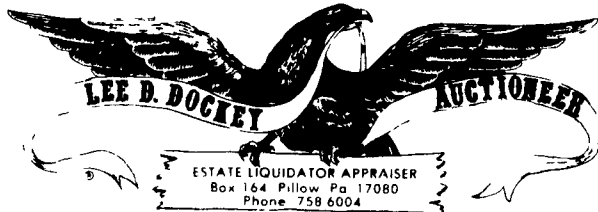
**WE SELL ON COMMISSION**

Call **JOHN J. RUTT**

(717) 354-5095

**Auctioneer: Lester Weaver**

AU-982-L



# PUBLIC AUCTION

**SATURDAY, APRIL 19, 1986 9:00 A.M.**

**LOCATION: 15 N. FIFTH STREET,  
HALIFAX, PENNSYLVANIA**

**REAL ESTATE**

**PARCEL #1:** 2-STORY BRICK CONSTRUCTED HOME having a frontage of 77', more or less, and a depth of 121', more or less...First floor contains LIVING ROOM W/FIREPLACE & OPEN STAIRWAY, DINING ROOM, OFFICE, KITCHEN W/BREAKFAST AREA & HALF-BATH...Second floor has 3 BEDROOMS W/CLOSETS & BATHROOM...FULLY CEMENTED BASEMENT W/CARD ROOM, LAUNDRY AREA, WORK AREA & COLD STORAGE ROOM...BLUERAY HOT AIR OIL FURNACE...ATTACHED 1-CAR GARAGE...PATIO DECK ABOVE GARAGE...All-Steel I-Beams & Support Posts have been used for this well-constructed home.

**PARCEL #2:** LOT situate to the rear and across the alley from Parcel #1, having a frontage of 77', more or less, and a depth of 131', more or less; having thereon constructed a 1-STORY, 2-CAR BLOCK GARAGE.

For additional information or inspection phone 896-3472 or 758-6004. Both parcels will be offered individually and as a unit at 1:00 P.M.

## ANTIQUES & COLLECTIBLES

10-Pc. Ornate Depression Era Dining Room Suite; Oak Morris Chair w/Pressed Lions Heads on Legs; Mahogany Governor Winthrop Bookcase-Desk; Depression Era Chifforobe; Spool Stand w/Drawer; Square Oak Stand; Lincoln Continental Mark II Parts Catalogs & Other Literature Pertaining to the Lincoln; Franklin Mint Antique Car Coin Collection; Pa. License Plates from 1942 to Present; Brass Car Horns; Dietz Driving Lantern; Pr. of Car Lights; Klaxon Hand Horn; Carriage Light Marked Union Ratchet; Brass Hand Bells; Child's Sadirons; Wooden Dollhouse; (2) Tin Battery-Operated Motorcycle Cops by Alps; Tin "Marvelous Mike Tractor" by Saunders; Tin Coca Cola Truck by Marx; Selection of Dolls; Brass Electric Polkey Projector Light; Horse Collar w/Mirror; Granite Mail Pouch Thermometer; Assortment of Wooden Planes; Cast Iron Lion Bank & Safe Bank; Early Blown Bottle w/Sheaf of Wheat; Buffalo Pottery Covered Sugar & Creamer; Kerosene Finger Lamp; Misc. Dishes; Etc.

## HOUSEHOLD & MISC. ITEMS

(2) Philco Refrigerators; Montgomery Ward 10 cu. ft. Chest-Type Freezer; Montgomery Ward Automatic Washer (app. 6 mo. old); Easy Automatic Dryer; 6-Pc. Mahogany Bedroom Suite (twin beds); Single Bed; Cedar Chest; Waterfall Vanity; Blanket Chest; 3-Sectional Curved Sofa; Rocker; Recliner; China Closet; Record Cabinet; Coffee Table; 4-Drawer Metal Filing Cabinet; Office Swivel Chair; (2) Metal Porch Chairs; Set of 8 Ned Smith Glasses; Collection of Vases; Misc. Dishes, Pots & Pans; Elgin Pocketwatch; 10K Gold Moose Ring; Misc. Shriner's Jewelry; Mens Lord Elgin 21J. Wristwatch; Numerous Other Items.

## TOOLS & MISC. ITEMS

John Deere 66 Riding Mower; Jacobsen Electric Start Rotary Mower; Scotts Spreader; Rubber Tire Wheelbarrow; Aluminum Extension Ladder; Dietzgen Micro-Line Leveling Rod; Lg. Selection of Garden & Hand Tools; Assorted Nuts, Bolts, Etc. **SALE WILL BEGIN W/TOOLS & RELATED ITEMS.**

**TERMS: REAL ESTATE - 10% DOWN. FURTHER TERMS & CONDITIONS TO BE GIVEN DAY OF AUCTION. PERSONAL PROPERTY - CASH. PERSONAL CHECKS ACCEPTED ONLY FROM PERSONS HAVING AN ESTABLISHED ACCOUNT W/AUCTIONEER OR APPROVAL PRIOR TO DAY OF SALE**

**HARRY W. ROW, OWNER**

TODD A. HOOVER, ATTORNEY

AUCTIONEERS: DOCKEY #AU229L, DOCKEY #AU1683L

& DEPPEN #AU1957L