

GPI Expands Line of Turbine Flow Meters

WICHITA, Kan. — Great Plains Industries has expanded its line of electric digital meters with 1-inch, 2-inch and low-flow models. These new meters are applicable for

agriculture, pest control, lawn care, chemical processing, and industries measuring petroleum products.

New flow rate meters and

totalizer meters are now available for flow rates from 0.3 to 300 gallons per minute or metric equivalent, with pressure ratings from 50 to 800 PSIG.

Meters manufactured of aluminum, 316 stainless steel, polypropylene, and fluoropolymer offer compatibility with most any fluid.

Unit features include permanent factory calibration, plus simple field calibration for universal measurement of non-viscous or viscous fluids with accuracy of plus or minus one-half percent.

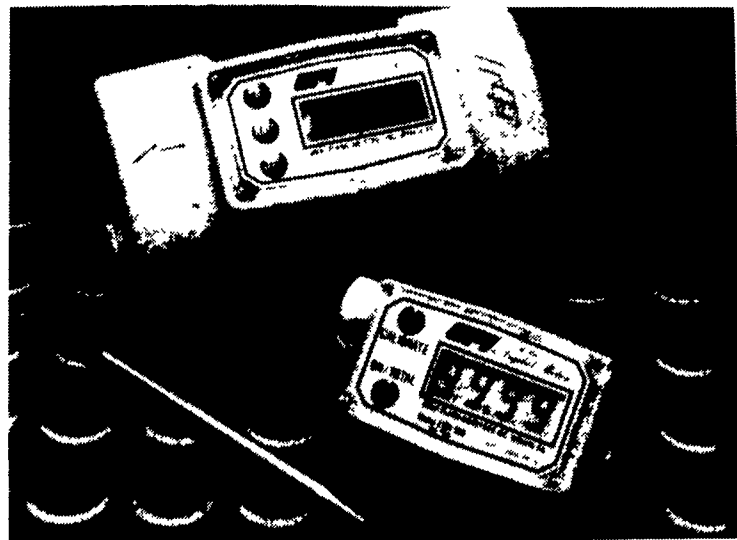
Power is supplied from two lithium power cells with life expectancy of 5,600 operational hours. GPI offers a low cost power cell replacement service. An automatic on/off feature on the meters conserves energy.

The unique design of a complete meter, including turbine assembly, microprocessor, and six-digit readout in one compact package, offers more flexibility in meter utilization and at a cost of less than

most turbines alone.

For further information about the Great Plains Industries digital meters, write the company at 1711

Longfellow Lane, Wichita, Kan., 67207; or call toll-free 1-800-835-0113; telex 417 357 GT PLAINS WIC.



Here's the new 2-inch and 1-inch EDM300 Model electronic digital meters from Great Plains Industries.

Don't move gypsy moths!

ANNAPOLIS, MD — According to national statistics, more people move their household in June than in any other month of the year. If you are one of the many persons that will move out of Maryland this year, be sure you don't take gypsy moths with you. A Federal quarantine regulates the movement of articles, including firewood and outdoor household articles such as lawn furniture, that may carry the gypsy moth.

People moving from Alleghany, Baltimore, Carroll, Cecil, Frederick, Harford, Howard, Kent, Montgomery and Washington Counties, the City of Baltimore and parts of Caroline, Garrett and Queen Anne's Counties are affected by the United States Department of Agriculture's Gypsy Moth Quarantine. The movement of firewood and outdoor household articles to areas west and south of Maryland is regulated by the quarantine and such items must be

inspected and either be certified free of the gypsy moth or be treated prior to moving.

According to Charles Staines, an Entomologist with the Maryland Department of Agriculture, regulatory officials in several states have expressed concern about the movement of regulated articles into their states. California has the authority to fine both the owner and the carrier of un-certified or infested articles attempting to enter California. The maximum fine for violating the California law is \$25,000.

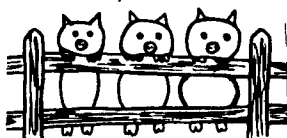
The homeowner can perform the inspection (self-inspection) of regulated articles or inspection can be done by a certified pest control operator. Contact the Maryland Department of Agriculture at 301/841-5920 for a self-inspection booklet, for the names of companies in your area that perform these inspections, or for additional information about the Gypsy Moth Quarantine.

SOYBEAN ROASTING ON YOUR FARM

Don't Waste It - Roast It!

This Little Piggy Went To Market,
This Little Piggy Stayed Home,
This Little Piggy Had...

ROASTED SOYBEANS



Make Higher Profits From All Grains.
Roasting Improves TDN, Destroys Mold,
Retards Toxins & Removes Moisture.

**CUSTOM GRAIN ROASTING
DONE IN PA. &
SURROUNDING STATES**

DALE L. SCHNUPP
RD 6, Lebanon, Pa. 17042
PH: 717-865-6611

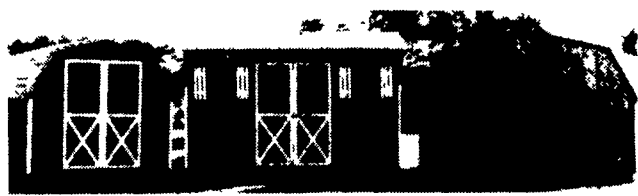
ALLEN SUMMERS
703 E. Christine Rd.
Nottingham, Pa. 19362
215-932-4761

DAVID N. GROFF
RD 1 Box 506C
Lewisburg, Pa. 17837
717-966-3593

STORAGE BUILDINGS

WE DELIVER ANYWHERE
ALL WOOD CONSTRUCTION
BUILT TO LAST
(717) 442-8655

I
N
Q
U
I
R
E



T
O
D
A
Y

**RIEHL QUALITY
STORAGE BARN**

P.O. Box 123 Rt. 30
Kinsers, PA 17535

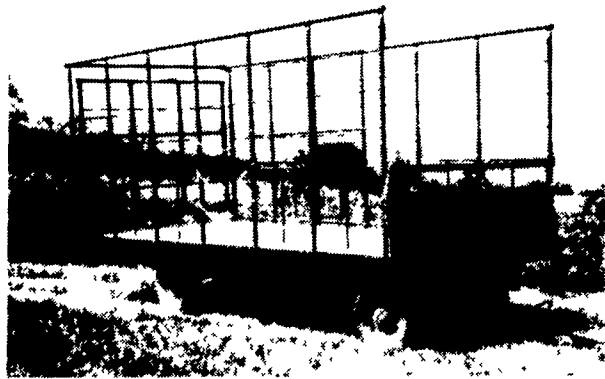
**SIX STYLES
TO CHOOSE**

- * Mini Barns
- * Quaker Sheds
- * A Frame
- * Carriage Sheds
- * Economy Barns
- * Cottages

We Offer You Any Size
Ask About Our Dealership

FREE DELIVERY WITHIN 25 MILES

BEST BUY of the YEAR



- 6" Steel Main Beam
- 2" Vertical Tubing Drilled so that the 1" Horizontal tubing extends Full Length of Wagon
- Front-Side and Rear Loading and Unloading
- 2x8 Pressure Treated Lumber Floor
- 2x6 Oak Cross Beams
- Beds are 8' wide, available in 16, 18 or 21' lengths. Racks are 90" high.
- NEW FEATURE: 6" Channel across back for pushing wagon without damaging bed.

FOR FURTHER INFORMATION, CALL YOUR LOCAL DEALER:

**LOST CREEK
IMPLEMENT**
Oakland Mill, PA
717-463-2161

**MELROSE FARM
SERVICE**
Greencastle, PA
717-597-3138

KELLER BROS.
Lebanon, PA
717-949-6501

DUNKLE & GREIB
Mill Hall, PA
717-726-3115

WALTER G. COALE, INC.
Churchville, MD
301-734-7722

TOBIAS EQUIPMENT CO., INC.
Halifax, PA
717-362-3132

**NORTHEAST
DISTRIBUTING**
West Clifford, Pa.
717-222-9020

**VALLEY IMPLEMENT
SALES**
Harrisonburg, VA
703-434-9961

**CHAMBERSBURG FARM
SUPPLY**
Chambersburg, PA
717-264-3533

**OXFORD GREENLINE,
INC.**
Oxford, PA
215-932-2753

PAUL SHOVER'S, INC.
Loysville, PA
717-789-3117

A.B.C. GROFF
New Holland, PA
717-354-4731

**CARLISLE FARM
SERVICE**
Carlisle, PA
77-243-4419

CLARK'S FARM SUPPLY
Williamsport, PA
717-494-0060

Manufactured By

CLW MANUFACTURING, INC.

R.D. #2, Box 8
Newburg, Pa. 17240
717-423-6794