

Reduced-till grain drill introduced by Krause Plow

HUTCHINSON, KS — Two models of a new flexible grain drill designed for use in reduced tillage seedbeds have been introduced by Krause Plow Corporation, a 68-year old manufacturer of conservation tillage equipment.

"As tillage specialists, we know what type of field surface will be left by any given type of reduced-tillage implement," explains Floyd Barkman, Krause Advertising and Sale Promotion Manager. "Consequently, we have taken that knowledge one step further, and designed a grain drill compatible with those field conditions. The resulting grain drill is an ideal addition to the Krause Profit-Till System.

The two models in the new 5000 Series flexible drill include one with hoe openers and another with double disc openers.

This new drill features an 8" square tube main frame and a unique 15 foot long 7" square tube telescoping hitch.

The double disc version, Model 5130, is available with a unique opener option for planting precision: walking tandem wheels. The walking beam configuration

provides a gauge wheel in front of each disc opener and the traditional press wheel behind to continually assure seed placement at a uniform depth in all types of terrain. The 13½" double discs are staggered 5/8" to provide better penetration and cutting ability. Disc spacing includes 6", 7½", 8", and 10". Each double disc opener will move vertically over 12" to follow rough terrain. Rubber press wheels include a single smooth 2" x 13", double-V smooth 2" x 13" single smooth 4" x 12", and V-grooved 4" x 12".

Model 5030, the hoe drill, comes with a choice of spring tip or shear bolt hoe drill openers mounted alternately on 2 ranks spaced 24" apart. Both have 21" under-the-frame clearance and come with 10" or 12" spacing. Massive springs feature adjustable pressure to maintain a constant working depth. Competition drills use only the weight of the drill which varies as grain is used. The shear bolt opener is 1¼" wide for good trash clearance. The spring tip has a 10" trip height and 250 pound point load for rocky conditions. Both openers feature a

precise V-slice alloy point for excellent seed placement and big 3" x 21" steel press wheels.

Another feature unique to the 5000 Series is a hydraulic rear fold for a narrower roading width. The 30-foot working width is reduced for the disc drills to 14' or 15' 3" for hoe drills when the two-section unit is folded. The drills can be folded with completely loaded seed boxes, since all six 12.5L x 15" 8-Ply tires carry the load. Tires are spaced wide on the frame for excellent roading stability.

Simplified hydraulics lift only the openers while the seed boxes remain in a fixed position. With the openers raised both drills have a

full 10" of clearance between openers and the road.

The drills also have fluted feed seed cups which are self-adjustable to allow for varying grain sizes and seeding rates at maximum accuracy. One lever dumps all the cleaning gates on each grain box. No need to rotate

shafts for cleaning. The seeding rate adjustment is spring loaded so an adjustment can be made without rotating shafts to clear grain. On the double disc model, the seed tubes are smooth and straight for a direct fall to the openers, greatly improving seeding accuracy over corrugated

tubes. The grain boxes have 2½ bushels per foot capacity, with an extra wide opening for ease of filling. An optional adjustable partition divides the seed boxes into two compartments for applying dry fertilizer while planting. Standard

equipment are seed level indicators, and shaft monitors, which are mounted on the tractor for easy viewing. An acre meter is also standard. Bifold markers with shear bolt breakaway protection are available as an option.

The new Krause equipment is available at C.B. Hooper and Son, Inc., Intercourse.

USDA announces preliminary tobacco referendum results

WASHINGTON, D.C. — Tobacco growers have disapproved marketing quotas for Maryland, cigar-filler and cigar-binder tobaccos and thus are ineligible for federal price supports for these tobaccos for marketing years 1986, 1987 and 1988, according to preliminary results of a mail referendum released today by the U.S. Department of Agriculture.

Quotas were last in effect in 1965 for Maryland tobacco, grown in Maryland, Virginia and Pennsylvania. Quotas have never been in effect for cigar-filler (type 41) tobacco, grown in Pennsylvania. For cigar-binder tobacco (types 51-52), grown in Connecticut and Massachusetts, quotas were last proclaimed for the 1985-87 crops, but these quotas were rejected by

growers in February 1985. Quotas for cigar-binder tobacco were last in effect in 1983.

In a concurrent referendum, growers approved quotas for Virginia sun-cured tobacco for marketing years 1986, 1987 and 1988. Quotas were last proclaimed for this tobacco for the 1983-85 crops and were approved by a 91.6 percent majority of growers.

'Rapid Farming' booklet offered

RACINE, WI — The Rapid Farming System booklet, designed to help farmers get the most out of their high horsepower tractors, is now available from Case IH.

The 32-page, full-color booklet provides farmers with a summary of product application information

for Case IH high horsepower tractors.

Copies of The Rapid Farming System booklet may be obtained by contacting: Public Relations, Case IH, 700 State St., Racine, WI 53404.



Raven Tough Polyethylene Tanks



- SPRAYER TANKS - For New Or Replacement
- STATIONARY TANKS - For Liquid Fertilizer Storage

ALL SIZES AVAILABLE FROM 25 GAL. to 1600 GAL.

HEAVY DUTY SPRAYERS BUILT STRONG TO PERFORM TOUGH



- 200, 300 & 500 Gal. Trailer-Models
- 110, 150, 200 & 300 Gal. 3 Pt. Hitch Models

FEATURES AVAILABLE:

- 25 & 35 A. Boom
- 45' All Hydraulic Folding Boom
- Quick Teget No Drip Nozzles
- Independent Boom Suspension Eliminates All Boom Bouncing.

PAUL B. ZIMMERMAN, INC.

295 Woodcorner Rd., Lititz, PA 17543
1 Mile West of Ephrata
(717) 738-1121

• HARDWARE • FARM SUPPLIES • CUSTOM MANUFACTURING • CRANE SERVICE



Tomorrow's Building At Today's Price!

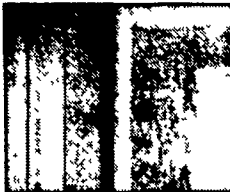
All new Morton Buildings now include the most popular design features.

PROTECTION LINER

The OSB Liner Panel installed between the steel panels and the framing serves two functions: 1) inside the building, it prevents bumps from equipment, tools, etc. from denting the steel siding, and 2) outside, it greatly reduces denting and panel defacing from bumps occurring from every day use.

PLASTISOL PAINT ROOF PANELS

Plastisol is an exceptionally thick (.4 mil) premium quality coating with a proven record of providing superior durability and long lasting protection against red rust (backed by a 15 year written warranty against red rust).



ROOF OVERHANGS AND VENTA RIDGE

The vented overhang-vented ridge system provides additional building air flow, allows for a future ceiling with proper attic ventilation, and improves building aesthetics.

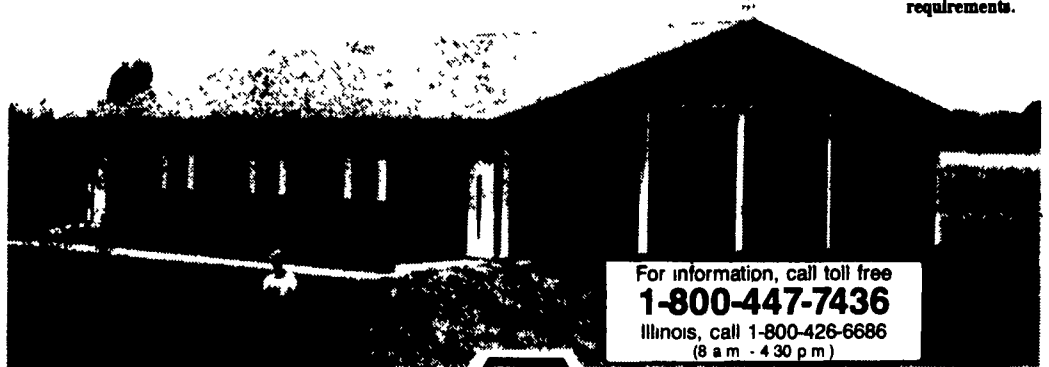


To take advantage of this price, we ask your cooperation with the following: Provide a level building site; furnish unloading help; participate in our 3 payment plan and accept delivery and erection at Morton Buildings' convenience. Also note, travel expenses will be added if your building site

is more than 40 miles from the sales office. Ask about our optional Energy Performer Liner & Insulation Package. For a complete explanation of this offer and a tour of Morton Buildings in your area, contact the nearest sales office.

A 42'x18'x7' building includes: 18' wide double end door with weathertight kit, two walk doors, three windows with shutters, two foot overhangs sides and ends, roof vent-ridge, filler strip at peak base & eave, Plastisol roof panels, OSB protection liner, weathervane, gutters and downspouts, meets all snow load requirements.

\$17,522



For information, call toll free
1-800-447-7436
Illinois, call 1-800-426-6686
(8 a.m. - 4:30 p.m.)

MORTON BUILDINGS

OVER 80 YEARS OF SERVICE

1185 York Rd
Gettysburg, PA 17325
Rd #10, Box 76
Meadville, PA 16335
State College, Box 361
Centre Hall, PA 16828
Box 126
Phillipsburg, NJ 08865
1918 Industrial Drive
Culpeper, VA 22701
P.O. Box 187
Harrington, DE 19952

Ph 717/334-2168

Ph 814/336-5083

Ph 814/364-9500

Ph 201/454-7900

Ph 703/825-3633

Ph 302/398-8100

Call or write today for more reasons why you should own a Morton Building LF

- Send more information on MORTON BUILDINGS
- Have your salesman phone for an appointment
- Commercial & Industrial
- Horse Barns
- Machine Storage
- Dairy Barns
- Garages & Shops
- Livestock Shelters
- Airplane Hangars
- Riding Arenas

Name _____

Address _____

Phone No _____