

TRUCKS AND TRAILERS

35
For Sale: 1971 Ford tandem dump truck, 534 engine, 5 and 3 transmission, 14 ft. steel bed, good tires, \$9,000
717-899-7332 or 717-899-6777

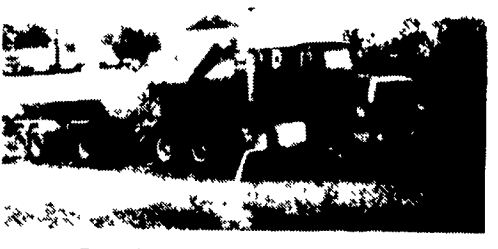
GMC 1971 Dump Truck, 478 engine; Hyster trailer, 18 ton tag-along; 10 ton Hillboro trailer, 22' goose neck
717-362-9126

1969 F-350 Ford w/68,000 miles, 11,000 GVW, 6 new tires, inspected till Nov. 1986.
Call

717-697-9529
after 6 p.m.
Weekends Anytime
See Section C Farm Equipment For Picture & Details


FOR SALE
1972 Chevy C-60 Truck with a Stoltzfus Spreader Box. Equipped w/427 Engine (Recently overhauled), PB, PS, 12 speed Road Ranger Trnas., Twin Screw Rear and, Spreading Lights, Hydraulic Driven Spreader and Lift Arms. Very Little Rust, Ready To Go! Sale Price \$4900
Phone **219-856-2656**

Semi Floater, Gas, V8, 549 C.I.D. International, stainless steel 1200 gallon tank, stainless steel hydraulic booms, 3x2 Defco pump, full 2" sparger tube, 30 gallon G.V.M. foam marker, chemical inductor, tires, rear 48x3100, 10 ply, front 15x22.5, 14 ply
301-874-5482
anytime, leave message




FOR SALE: LIME TRUCK
1977 Ford with 1984 Silver 8V92 engine, Jake brake, recent out of frame major. RTO12513 Trans. 10x20 rubber. Stoltzfus spreader box, 1974 trailer, good condition.
717-354-4763

DUTCHMAN'S TRUCK SERVICE, INC.
Pennsylvania Turnpike Exit 21
R.D. 3, Denver, Pennsylvania 17517
Phone 215-267-2867

1979 INTERNATIONAL C04070B Detroit 6V92 @ 305 HP
9 Speed, 3.70:1 Ratio Rears, 86" Sleeper
\$16,600




1981 FORD CLT 9000
Cummins 400, RTO 12513, Air Cab Suspension

YES!! ENGLE FORD DOES MAKE IT EASIER!!

Over 100 New & Used Trucks, Vans & 4x4's

85 Ford Bronco II, 4x4, V6, AOD, PS, PB, AC. Save Thousands
84 Chev. C10 Silverado Tk. V8, AOD, PS, PB, AC, Loaded, Only 18,000 Miles
83 Ford F150 4x4, V8, Auto, PS, PB, 1 Owner
83 Chev. Blazer 4x4 Silverado Pkg., V8, AOD, PS, PB, PW, AC, Loaded, 1 Owner
(2) 78 Ford L-N 8000 Cab & Chassis, Cat 3208 Engine, Diesel, 5 Spd. Over 2, A Title, 186" Wheel Base. Hard Find.
68 IH Dump Truck V8, 5 Spd., 2 Spd. Rear, Hurry Must Go

ENGLE FORD, INC.
Rt. 147 North Millersburg, PA 17061
In PA The Call's On Us 1-800-242-8075
Out of State Call 1-717-692-4841



1983 GMC One-Ton Model 3500 with Eby aluminum cattle body. Truck fitted with 6.2 litre diesel engine, automatic transmission, power-steering, heavy-duty brakes, 9000# GVW rating, 10-ply tires, heavy-duty rear springs. Mileage 36,000.
CONDITION OF TRUCK: SHOWROOM CONDITION
PRICE: **\$8,500.00**
PHONE: **412/653-0200**

Mark VII - Pickups - Broncos - Bronco II - Stake Body - Crew Cab -

SHEEHY FORD LINCOLN MERCURY INC.
For All Your Farming Transportation Needs Through The F800 Series

BRONCOS DIESEL PICKUPS CHASSIS CAB CARGO VANS 4x4 RANGERS PICKUPS
BRONCO II SUPER CAB CREW CAB STAKE BODY BOX VANS XLT CUSTOM VANS

SHEEHY HOTLINE 717-272-7671

Unless This Emblem Is On Your Car Or Truck You Probably Paid Too Much

SHEEHY LEBANON

9-9 Daily
9-5 Sat.

Parts Dept. Open
Daily 8-5
Sat. 8-12

20th & Cumberland St., Lebanon

SHEEHY'S FIRST SPECIAL DEMO SALE ON ALL CARS AND TRUCKS

7.7%*

on Escort and Lynx for 36 months

9.9% to 48 months*

F150 4x2 and 4x4	Lynx	Tempo
Bronco II	Cougar	Topaz
Ranger (excepts)	T-Bird	G. Marquis
Escort	Crown Vic.	Lincoln (42 Mos.)

* Until Ford Notice Of Cancellation

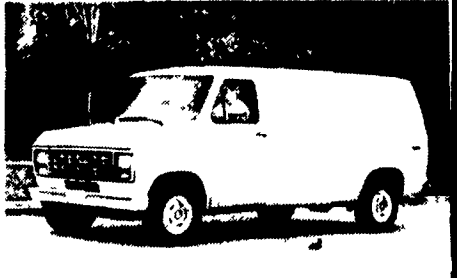
MARCH DOOR PRIZES

- VCR
- Microwave
- 3 \$100 Merchandise Certificates - Your Choice Of Store

Drawing To Be Held April 1st

Discount On All Parts
WITH THIS COUPON

10%
Good For One Purchase Per Customer



Tempo - Cougar - Continental - Town Car - 4x4 - Box Van - Rangers -

Custom Vans - XLT - Grand Marquis - Marquis -

Lynx - Topaz - Diesel Pickups - Mustang - T Bird