

## Public Auction Register

Closing Date Monday 5:00 P.M.  
of each week's publication

**SAT. MAY 17 - 9AM** Real Estate, Model T & A Ford Parts, Lumber. Located along Rt. 501, in the town of Mt. Aetna, Marion Twp., Berks Co., PA. By The Miles D. Zellers Estate Lucy Zellers Execut John H Fry, Auct.

**SAT. MAY 17 - 9:30AM** Cars, Antique Tractors & Engines, Parts & Bldg. Supplies, Literature. Of the Late Finian F Wagaman. Located: RD 8, York on Days Mill Rd., 2 mis. E. of signal light in York New Salem of Rt 616. Mrs. Finian F Wagaman. Blaine N Rentzel, Auct.

**SAT. MAY 17 - Utility Eq. & Light Duty Vehicles For:** Northern Illinois Gas, Aurora, IL. Vilsmeier Auct Co. Inc.

**SAT. MAY 17 - Utility Eq. & Light Duty Vehicles For:** Public Service Elec. & Gas Co., Edison, NJ. Vilsmeier Auct Co., Inc.

**MON. MAY 26 - Antique Tractors & Farm Eq.** Keener Eq., Inc., 1531 Manheim Pk., Lancaster, PA. C.H. Wolgemuth & B. Rentzel, Aucts

**TUES. MAY 27 - 11AM** Registered & Grade 6th Annual Holstein Heifer Dispersal at Ulysses, Potter Co., PA. Bailey-View Farms, Owner. Jerry Pirrung Sales, Auct

**FRI. MAY 30 - 9AM** Farm Eq. New Holland Sales Stables, Inc., New Holland, PA.

**SAT. MAY 31 - Utility Eq. & Light Duty Vehicles.** For Bell of PA, Phoenixville, PA. Vilsmeier Auct. Co. Inc

### JUNE

**MON. JUNE 9 - 10AM** Complete Potato Farm Eq. Auction for Alger Farms, Chateaugay, Franklin Co., NY. Pirrung Aucts., Inc. 716-728-2520

**FRI. JUNE 13 - 1:30PM** Public Auction of PA State Graded Feeder Pigs. Carlisle Livestock Market. Exit 12 off I-81. 717-249-4511

**SAT. JUNE 14 - 9:30AM** Benefit Auction of Quilts, 3D painting, Hshld. Tools & Hdw for New Comenent Christian School, Lebanon Area Fairgrounds SE of Lebanon off Rt. 72 at corner of Cornwall & Rocherty Rds. Harry Bachman, 717-867-1809 & Nelson Ebersole, 717-867-5221, Aucts

**SAT. JUNE 14 - 10AM** Registered Heifer Sale New Holland Sales Stables, Inc., New Holland, PA.

**FRI. JUNE 20 - 6:30PM** Feeder Pig & Feeder Cattle. Keister's Middleburg Auction, along Rt. 522, Middleburg, PA.

**FRI. JUNE 27 - 9AM** Farm Eq. New Holland Sales Stables, New Holland, PA.

**SAT. JUNE 28 - 11AM** Horse Sale. Keister's

Middleburg Auction, along Rt 522, Middleburg, PA

### JULY

**FRI. JULY 11 - 7PM** Horse Sale at New Holland Sales Stables, New Holland, PA.

**FRI. JULY 11 - 1:30PM** Public Auction of PA State Graded Feeder Pigs. Carlisle Livestock Market. Exit 12 off I-81. 717-249-4511.

**FRI. JULY 18 - 6:30PM** Feeder Pig & Cattle. Keister's Middleburg Auction, along Rt. 522, Middleburg, PA.

**SAT. JULY 26 - 11AM** Horse Sale at Keister's Middleburg Auction, along Rt. 522, Middleburg, PA.

## PUBLIC AUCTION

**FARM MACHINERY, HAY, STRAW, CORN SILAGE**  
**SATURDAY, APRIL 12, 1986**  
at 10:00 A.M.

Located From Millersville, Pa. go West on Letort Rd. about 2 1/2 Miles to Farm, Across from Letort Elementary School.

Massey Ferguson 180 Diesel, wide front; 2 Massey Ferguson 65 Diesels, 1 wide front, 1 narrow front; Massey Harris 101: Farmall A; 1961 Int. Truck, 16 Ft. Dump bed. MF 124 Bailer w/ thrower, pto; MH 90 Combine; 12 Ft. head; 4 Bottom MF trip bottom plow; NI Manure spreader w/ hyd tail gate; NI manure spreader; JD 3 section spring harrow; MF Flail chopper; Athens 10 Ft. Transport disc; AC 7 Ft. Crumper; 469 NH Hay bind; Brillion 10 Ft. Cultipacker; Int. 2 row Corn planter; 3 pt. hitch; Loader for 101 MH; Int. 13 Disc grain drill; NI 3 pt. Rake; Harvest handler grain elevator; Papec hammer mill; Portable hammer mill; Mixer wagon; Old antique wooden wheel dump rake; 7 Ft. mower; Huskee rotary mower; 18 Ft. hay wagon; 16 Ft. Grove hay wagon; Flat bed for a wagon; Elevator; Hytrol Conveyor; 2 Wheel trailer; 1 Row tobacco planter; 2 Tobacco ladders on wagons; tractor chains.

40 Ft. Grain Auger; Corn sheller; Small grain auger; Wheel barrow; Pincor generator; Lincoln welder, 1/2 Ton chain hoist; C Clamps; Duracraft drill press; Air compressor; Grinding wheel; Agway heater 150,000 Btu; 3 Platform scales; P & bean scales; Alum ladder; 2 Tobacco cellar stoves; Tobacco lathe; Sizing boxes; Grass seeder; 2 Feed carts; Feed chest; Bag wagon; Hog troughs; 2 Barn fans; Bales of bailer twine; Hay forks; Dewalt 740 Arm saw; Table saw; Meat slicer; Wooden pulleys; New cross slide vise; Table vise; Single trees; Buggy Jack; Old hand pump. De Laval 3 Milk units; 1 Bucket; Dumping station; 3 hrp. Motor milker pump; Wash tubs; Milk cans; Brokhoff Dairy milk crates. 14 Hrp. Wheel Horse riding mower; Wheel Horse rototiller; Parker lawn sweeper; Misc lumber: 23 sheets 1/2" Plywood; Washstand; Oak school desk.

### TONS OF HAY, STRAW, CORN SILAGE

Items to numerous to mention No out of state checks.

TERMS BY:

**MRS. ELVIN M. HESS**

**AUCTIONEERS - Lloyd Kreider, AU000513L,**

**Randal Kline, Roy Good, Gary Shirk**

Refreshments available.

Not responsible for accidents day of sale.



R D 1 BOX 277 NEW PROVIDENCE PA 17560

## PUBLIC SALE

**APRIL 5, 1986**

9 A.M.

At Bruce Styer farm. 2 1/2 mile S.E. of Mifflinburg, Pa. on Ridge Road, 5 mile W. of Lewisburg on Rt. 45 turn S. on Dreisbach Church Road, follow signs.

J.D. 3010 tractor and 4 bottom semi-mount plow; Oliver 88 tractor and cultivator; 1939 Ford Ferguson tractor, plow & cultivator; Souder loader; A.C. #60 combine; Int. 540 manure spreader; N.I. 109 lime & fert. spreader; #38 Woods mower; 16 hoe Int. disk drill; A.C. round baler; Black Hawk 2 row corn planter; 4"x6' & 4"x20' grain augers; Clipper fanning mill; Straw cutter; 40 gal. #30 oil; two 6"x50' endless belts; potato planter & digger; hammer mill; Burr mill; iron troughs; 18 fireproof doors; machinists tools, micrometers; calipers, etc.; Misc. tools, parts, bolts, etc.; companion welder & supplies; platform & beam scales; 2 bee hives & equipment. 30 head cheviots ewes; 1 North Country cheviots ram; sheep equipment; cherry lumber, 2" planks, plywood, etc. 1974 Int. 1/2 T. pickup w/cattle rack.

This is a partial list. Many more farm related items.

Owner

**MRS. BRUCE STYER**

Auct. - Neil S. Moyer

000641-L

Lunch

## PUBLIC SALE

**OF ANTIQUES & COLLECTIBLES**

**SATURDAY, APRIL 5, 1986**

at 9:00 A.M.

Located at the Shady Grove Community Center, 2 miles east of I 81 along PA Rte. 16 in southern Franklin County.

**COINS:** 6 silver dollars; Austrian gold medal, \$2 1/2 and \$1 gold coins; Mercury dimes; Washington quarters; Franklin halves; Standing Liberty halves; Confederate money. **FURNITURE:** dovetailed decorated chest; early wrought iron safe with dovetailed drawers; rope beds; dovetailed blanket chest; mahogany secretary desk with book case; mahogany vanity dresser and chest of drawers; drop leaf table; oak and poplar drop front desk; square oak extension table.

**CLOCKS AND WATCHES:** Eli Terry & Son wall clock; brass water clock; marble mantle clock; Ansonia clock; New Haven walnut case 30 day wall clock; oak case Seth Thomas wall clock; Waterbury mantle clock; shelf clocks; 18 gold, silver & gold filled open and hunter case 17, 19 & 21 jewel pocket watches (Elgin, Howard, Standard, Tobias, Hamilton, etc.); extra watch keys.

**GLASSWARE AND POTTERY:** Canton china; old jars & bottles; Cloisonne vases; Fry glass; large china chicken on nest; Delft portrait plate; lithopane stein; Toby pitcher; red ware pottery; 1 1/2 gal. blue decorated crock; 3 gal. Darow jug with blue decoration.

**MISC. COLLECTIBLES:** handmade quilt; coverlet (Wm. S. Morgan Somerset Co., 1872), coverlet (Fishkill Co., 1872); coverlet (Ambrose Miller Blair Co.); oil paintings; early water color painting as used to illustrate Fraktur; Fairbanks Std. Scale Sign; pin fire revolver; percussion boot pistol; Brass percussion boot pistol; engraved powder horn; bullet mold; rye straw hamper; china doll with kid body; Lionel train set (std. gauge) #384 E; R.R. oil cans; R.R. passes; mortised bag wagon with wooden wheels; jointing planes; brass ship's compass; lanterns; steel bread pans; store tins; cigar cutter; brass postal scales; brass bell; brass spittoon; brass scale scoop and scale; brass Rayo lamp; brass steam whistles; copper scale tray; large dovetailed copper kettle; cast iron pots and kettles; cast iron mortar and pestle; old mill steelyards; J&P Coates spool cabinet; walnut dovetailed box; music box; violin; squeeze box; books; post card albums; advertising cards; stereoscope; misc. jewelry; fat lamp; Indian arrow heads.

**HOUSEHOLD GOODS**

For complete listing phone 717-597-2787 or 717-375-2451.

Owners:

**MRS. DOROTHY GORDON, ANNA BONEBRAKE SHAW, ESTATE AND OTHERS**

**AUCTIONEERS:**

E. Stull, L. Dietrich, and S. Custer

AU-000921-L, AU-001464-L, AU-001782-L

## PUBLIC SALE

**SATURDAY, APRIL 12, 1986**

at 10:30 A.M.

Midway between Dry Run & Concord seven miles north of Willow Hill interchange.

1 930 Case Tractor, good; 1 Farmall H Good; 1 I.H. Tandum Manure Spreader; 1 10' Chisel plow, good as new; 1 I.H. 10 ft. transport disc; 1 I.H. drill 16 double disc with fertilizer & grass seeder has sown 122A like new; 1 36 ft. elevator & motor; 1 16 ft. aluminum elevator; 2 Gravity wagons; 1 10 ft. I.H. Harrow; 1 8 ft. Smidleys Steer feeder; 1 3 ton bin on legs; 2 gas tanks 250 gal.; 1-16 ft. deep freeze; 1 set 5-16 inch bottom plows; 1 40 gal. water heater; 1 IH 4R Corn Planter.

### GARAGE EQUIPMENT

1 6 speed commercial drill press, heavy duty; Heavy Duty Weldin Blower heater; 5 ton chain hoist; Lots of tools; Some New & Used Parts; 2 sets 8-25 truck chains; 2 sets of 9-25 truck chains; Tractor chains; 2-16 ft. 1/2" chains; 10 gas burners; 75-12" blocks; 6 Gram Augers 4" & 6" with motors 10 to 25 ft. long; 2 sprayer pumps 1 high pressured Myers Pump, 1 I.H. wood saw; 2 Good rope tackles with new rope; 8 good chicken crates; A lot of drawers & metal shelving; 2 large piles of scrap iron; 1 wagon load of misc. items gathered from 60 years of farming; Also a lot of new bolts.

Also, 35 acre tract with good building lots.

I.D. required for bidders numbers.

**SAMUEL H. CAMPBELL**

Aucts: # AU-000876L

Speer # AU-002027

Harry # AU-000-392L

Clerks: Dale and LaRue Coons

Not responsible for accidents

Lunch available

## TRUSTEE'S SALE

**OF DESIRABLE SMALL FARM**

In execution of a certain deed of trust dated May 30, 1978 recorded in the Clerk's Office of the Circuit Court of Rockingham County, Virginia, in Deed Book No. 523 at page 111, the undersigned Trustee will offer for sale at public auction, on the premises on

**FRIDAY, APRIL 18, 1986**

AT 12:00 NOON

One 56 acre farm, with 31 acres of tillable land, 3 acres wood land and 22 acres grazing land. The farm is improved by one L-shaped two-story frame dwelling, one section approximately 16'x32' and the other section approximately 16'x24'. The first story is improved by a kitchen, dining and living room, bedroom and one utility room. The second story is improved by 3 bedrooms and a bath. The dwelling is heated with oil baseboard hot water heat. One two-story utility building 12'x22' with a seamed metal roof and outside walls of corrugated metal. One steel and block hog finishing building approximately 30'x115'. The building is improved by 32 finishing pens with slatted floors and 7 ventilating fans. One frame hog farrowing house approximately 24'x120', roof and outside walls covered with corrugated aluminum roofing, improved with 18 metal farrowing pens, slatted floors and 4 ventilating fans. One confinement sow house approximately 24'x130', walls and roofing covered with corrugated aluminum roofing, house is divided into five finishing pens with slatted floors, equipped with one gas heater and an automatic watering system, 28" curtains on both sides. One frame bank barn approximately 40'x60' with the first floor divided into 5 sow pens and the second floor into a large loft suitable for machinery and crop or hay storage. Adjoining the barn is a covered feed lot, there is one 18'x55' Brandon concrete stave silo.

This farm is located two miles south of Maryland, Virginia, on the west side of Route 619 (Simmers Hollow Road). Watch for auction signs.

**TERMS OF SALE:** 10% cash on day of sale; balance in cash at closing on or before 30 days; 1986 taxes to be prorated as of day of sale. Inquiries may be directed to Dan B. Todd, Farmers & Merchants Bank, Timberville, VA. 896-8941.

Trustee,

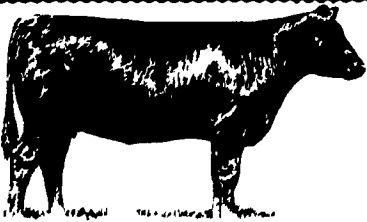
**DAN B. TODD,**

Substitute Trustee

**LAWRENCE H. HOOVER, JR.**

C.N. WINE, AUCTIONEER

Tax Identification #66 (A) L26



## PUBLIC SALE

**19th ANNUAL FEEDER STEER SALE**  
**SATURDAY, APRIL 19, 1986**  
Starting - 12:30 P.M.

Located 12 miles west of York, PA - 1/4 mile east of East Berlin, PA along Rt. #234.

### 110 FEEDER STEERS 110

110 head of steers weighing from 300 to 700 lbs. consisting of Charolais, Herefords, Angus, Black White Face, Crossbreds and Holsteins. All are acclimated and wormed - The right kind of cattle for pasture. Steers will be sold at 1:00 P.M.

### FARM EQUIPMENT & FARM ITEMS

J.D. 520 Tractor w/power steering; live P.T.O., 3 pt. Hitch for 520; 28 A.C. Disc Harrow; J.D. Quick Mount Cultivators; J.D. #5 3 Pt. Hitch Mower; 2 Wheel Trailer; 2 Hyd. Cylinders; 3 Log Chains; Scraper Blade; Small Disc Harrow; Case Transport 28 Disc Harrow; 2-14" - 38" Tractor Tires; Barn Fan; Hog Feeder; Wheelbarrow.

Clair R. Slaybaugh, Auctioneer

Lic. #856

R. Kluck, Clerk

C.L. "Cot" Jacobs

**BARRY L. JACOBS**

East Berlin, PA