

## Public Auction Register

Closing Date Monday 5:00 P.M.  
of each week's publication

# CONSIGNMENT SALES

on the  
**NORMAN PARKER FARM**  
Jacobstown, Cookstown Rd.,  
Wrightstown, N.J.

**SATURDAY, MARCH 29, 1986**

Starting 9 AM Sharp

Plenty of Furniture, Lot of Lawn Mowers, Shovels, Forks, Hand Tools, Dishes, Pots & Pans, Linens, Lamps, Numerous other articles. Furniture will be sold starting 11 AM.

**SATURDAY, APRIL 5, 1986**

Starting 9 AM Sharp

Antique Wagons, Carriages and Sleigh will be sold at 1 PM. Trucks & Tractors will be sold at 1:30 PM. Plenty of other machinery.

Lunch will be available on the premises.

The seller or auctioneer are not responsible for any theft, injury or any accident of any kind on sale premises.

TERMS: Cash or good check.

Auctioneer- Lee Parker  
Sales Manager- Norman Parker  
609-758-8603

FRI. APR. 18 - Farm Eq. Dispersal. Panorama Farm, Ashburn (Near Leesburg) Ownby Auction Serv.

SAT. APR. 19 - 10AM 1800 Head. Located Moorefield, WV WV Cattlemen's Assn.

SAT. APR. 19 - 1:30PM 500 Head. Located United (Parkersburg), WV. WV Cattlemen's Assn.

SAT. APR. 19 - 2PM 400 Head. Located Elkins, WV WV Cattlemen's Assn.

SAT. APR. 19 - Arnold's 41st Hog Sale. Breeding Hogs & Project Pigs

Located Lebanon Fairgrounds, Lebanon, PA. Harry Bachman, Auct.

SAT. APR. 19 - 11AM Globe-Run Farms Dairy Herd Sale, 175 Head. Located Huntingdon Co., 5 mi N of Petersburg on Rt. 305. By John A Foster Family. Managed by The Cattle Exchange.

SAT. APR. 19 - 9AM Extremely Large Annual Consignment Auction of Trucks, Trailers, Carpentry & Masonry Eq., Tools, Mach. for Tire Consultants, Inc. Located at Garden Spot Auction, Ephrata, PA. J Omar

Lancaster Farming, Saturday, March 29, 1986-E21  
Landic Auction Service, Jay M. Witman, Auct.

SAT. APR. 19 - Annual Consignment Auction Roy Teitworth Sale Lot, Groveland.

SAT. APR. 19 - Industrial Eq., Trucks, Tractors, Farm Mach, Auto, Tools, Shop Eq., Hshld. Located

Perry Co. RD 1, Millerstown. Mrs. Kenneth Gelbaugh, Owner Bryan Imaes, Auct.

SAT. APR. 19 - 4:30PM Real Estate, Outstanding Antiques, Fine Linens, China & Glassware. Located 147 Park Avenue, Ephrata, PA. Terms by

Martha F Gehman Estate T. Glenn & Timothy G Horst, Aucts.

SAT. APR. 19 - 9AM Real Estate, Antiques, Collectibles, Hshld., Tools. Location: 105 N. Fifth St., Halifax, PA. Harry W Row, Owner Dockey, Dockey, Deppen, Aucts

SAT. APR. 19 - 9:30AM Farm Mach., Trucks. Located 16915 Bull Frog Rd., Taneytown, MD. 2 mi N. of Rt 97 From Emmitsburg 140 E. of Bollinger School Rd to Bull Frog Rd. first farm on left. Otis W. Shoemaker, Owner. Ralph L. Schuchart, Aucts

SAT. APR. 19 - 8:30AM Real Estate, Farm Mach., Car, Truck, Feed, Butchering Tools, Antiques, Hshld., Guns. Located approx. 1/4 mi. SE of Loganville off old Rt. 111 turning at the Springfield Bowling Alley along E Springfield Lane, York Co., PA. Susan A. Whitcraft, Owner. Bob & Tom Sechrist, Aucts.

## FARMERSVILLE AUCTION

TUESDAY, APRIL 1

3:00 P.M.

In Farmersville, 3 mi. east of Brownstown, Lanc. Co., Pa.

Small Estate out of Harrisburg plus additions. See Lanc. Newspaper Sat., March 29 For Full Listing.

WE SELL ON COMMISSION

Call **JOHN J. RUTT**  
(717) 354-5095

Auctioneer: Lester Weaver  
AU-982-L

## 18th Annual All-Day Auction

of the Rawlinsville Volunteer Fire Company

SATURDAY, APRIL 12, 1986

At 8:30 A.M.

Consisting of farm equipment, lawn and garden equipment, building materials, new and used tools, dry goods, household goods, trees and shrubs, used vehicles, furniture and appliances, antiques. Many items too numerous to mention.

Items sold on commission basis. Not responsible for accidents on day of sale.

Food by the ladies auxiliary.

No out of state checks.

For information, call 284-2448, or 284-4383 or 284-2159

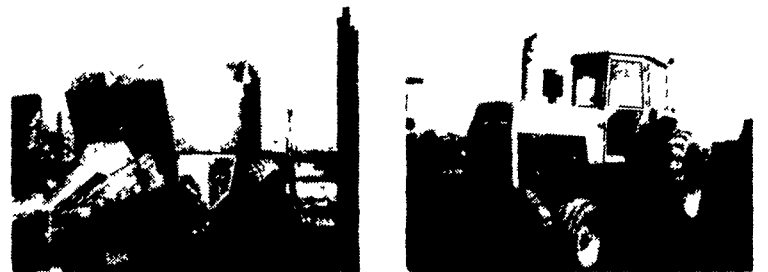
## PUBLIC SALE

OF FARM MACHINERY  
THURSDAY, APRIL 3, 1986

9:00 A.M.

Dispersal Sale of Used Farm Machinery owner is discontinuing agriculture farm equipment line located at Cochranville, Pa. at the intersection of Route 41 and Route 10 Chester Co., Pa. for Stoltzfus Farm Service Inc.

1976 White 2-135, 1971 John Deere 4020, 1964 Oliver 770, 1978 Allis-Chalmers 5040, 1957 Farmall 350 Fast Hitch; 1959 Farmall 240 Fast Hitch; 1954 Farmall Super C Fast Hitch; 1975 David Brown 1210; Hough payload; 1976 Hydra Mac 8C gas; Schwartz 1400 loader with Farmall 350 brackets like new; New Leon 636 loader with 2-62 white brackets; Owatonna Mustang 1000 skid loader.



1979 Model 7650 4WD Field Queen Forage Harvester with cab and air conditioning 1200 hrs.; Hesston 3 row wide corn head, Hesston 2 row narrow corn head, Hesston 3 row narrow corn head; Hesston 4 row narrow corn head; Hesston 6' pickup; 1976 Fox model 6200 with cab 1079 hrs.; Fox 3 row belted head; 1971 Maxi cab 4WD 8 knife cutter head; New 3 row chain head; 1972 Maxi 4WD; Fox 3310 pull type 8 knife cutter head; Fox 753 belted head; 807 pickup; Fox Model 2,000 harvester; Fox 2 row narrow head; Fox 2310 with 2 row narrow belted head; 2 Hesston 4800 big balers; Hesston 1014 Hydro Swing windrower; Hesston 9' hay rake; New Holland 69 Baler with thrower; Fahr 17 tedder; Grimm P.T.O. Tedder; M.F. 9' hay rake; 2 New Idea wheel rakes; I.H. 12' flail mower, Woods C-80 pull type mower, 2 Bush Hog 160" mowers; Mott 60" flail mower; New Holland 451 9' sickle bar mower; New Holland 463 disc mower; I.H. disc mower; Kuhn G.M. 66 disc mower; New Idea 270 cutdioner; Little Giant 40' single chain elevator; 16' single chain elevator; Smoker 125 bu. bin wagon; 6"x40' auger with engine mount; New Idea Uni-system model 705 rebuilt with new paint with 2700 hrs; 767 Harvester; 702 gas with H.D. transmission H.D. axle; 702 with 729 sheller & 720 2 row corn head; 710 Combine; 713 grain header; 711 grain header; 730 4-row wide head; 713 S. Flex head; 741 Feeder house; 729 A. sheller; 726 Husking bed; 720 2-row head; 761 Hay pickup; 762 2 row corn head; 763 3 row corn head.

### NEW ITEMS

Arts Way 500 26" Mixer Mill 150 bu. with scales and hydraulic drive; Automatic 1200 Rollermill; U.F. T 14' Hy Dump wagon; 18' wood bale body with 8 ton gear; Bush hog 1438 14' disc harrow; Used 18' crust buster offset disc single fold; Glencoe 27' Field cultivator; Glencoe SS-7' stretch frame soil saver; Bush hog 1436 10' disc harrow; Athens 7 tooth 3 point hitch chisel; I.H. 4 bottom 16" plow; Oliver 566 5 bottom 16" plow; Chattanooga 11' packer with 19" wheels; John Deere 1440 no till planter with monitor; White 5400 4 row planter; Ford 3 bottom 14" plow; Ontario grain drill; New Idea #7 corn picker; 500 gal. skit sprayer; flat bed trailer, roll bar and canopy for White or Oliver; manure spreaders; New Idea 244 Tandem; 325 bu. 2 beater endgate; New Idea 218 Tandem 318 bu. single beater; New Idea 214 2 beater endgate; New Idea 213 3 beater; Hawk Bilt 2195 roll top; New Holland 675 tandem 275 bu. Single beater; Used Homelite chain saws; Used Weed Eater gas trimmers; Nesseth Bale Shredder; New Century 225 amp Mig Welder; Century 250 amp A.C.-DC Welder; Century Battery chargers; Kleen-King 725 PSI pressure washer; Kleen-King 500 PSI pressure washer; New White planter augers; new Kasco planter augers; Midwest harrows; (4) 10.00x20 truck tires; 1 pr. used 20.8x38 tractor tires; 1 pr. 18.4x38 tractor tires; 1 set 18.4x34 axle duals; and many more items too numerous to mention.

Auctioneers Note: Terms of the sale cash, certified check or approved credit prior to day of sale financing can be approved one week prior to sale.

Sale Time 9:00 A.M.

Terms By

**STOLTZFUS FARM SERVICE INC.**

Ph. 215-593-2407

Sale Conducted By  
Chet Long Auctioneering Service  
AU-000554-L  
Ph. 717-733-9601 Ephrata, Pa.

## 1986 SPRING SALES IN VIRGINIA

32,000 HEAD — FEEDER CATTLE — STEERS & HEIFERS

Angus • Hereford • Black Baldies • Charolais Simmentals • Other Exotic Crosses • One Sale Holstein Steers  
Weights — 300 to 1000 Lbs. — Feeder Cattle for Grass & Feedlot  
YEARLING FEEDER CATTLE

PLACE	DATE	TIME	NO HEAD	SEX	LOCATION	TELEPHONE
*T Harrisonburg	Mon Mar 31	7 30 p m	1000	Steers	Rockingham Livestock Market	703 434 6765
T Front Royal	Tues Apr 1	<b>CANCELLED</b>		Steers & Heifers	Front Royal Livestock Exchange	703 635 5511
T Fredericksburg	Wed Apr 2	7 00 p m	800	Steers & Heifers	Fredericksburg Livestock Market	703 373 8207
TH Dublin (Heifers)	Wed Apr 2	7 30 p m	1000	Heifers	Pulaski Livestock Market	703 674 5311
TG Marshall	Thurs Apr 3	7 00 p m	1000	Steers & Heifers	Fauquier Livestock Exchange	703 364 1566
T Galax	Thurs Apr 3	7 30 p m	400	Steers & Heifers	Galax Livestock Market	703 236 2971
TH Roanoke (Heifers)	Fri Apr 4	9 00 a m	900	Heifers	Roanoke Hollins Stockyard	703 992 1112
T Winchester	Fri Apr 4	10 00 a m	1500	Steers & Heifers	Farmers Livestock Exchange	703 667 1023
TH Wytheville (Heifers)	Fri Apr 4	6 30 p m	800	Heifers	Wytheville Livestock Market	703 228 3201
T Abingdon	Mon Apr 7	7 30 p m	1250	Steers & Heifers	Tri State Livestock Market	703 628 5111
T Narrows	Tues Apr 8	7 30 p m	1000	Steers & Heifers	Narrows Livestock Market	703 726 2152
T Staunton	Wed Apr 9	10 00 a m	1000	Steers & Heifers	Staunton Union Stockyard	703 886 5131
TH Harrisonburg (Heifers)	Wed Apr 9	4 00 p m	600	Heifers	Shenandoah Livestock Sales	703 434 4482
T Dublin	Wed Apr 9	7 30 p m	1200	Steers	Pulaski Livestock Market	703 674 5311
TB Lynchburg	Thurs Apr 10	1 00 p m	1200	Steers & Heifers	Lynchburg Livestock Market	804 821 5956
T Roanoke	Thurs Apr 10	7 00 p m	1000	Steers	Roanoke Hollins Stockyard	703 992 1112
THG Culpeper (Heifers)	Fri Apr 11	1 00 p m	1000	Heifers	Culpeper Agri Enterprise	703 547 2188
T Wytheville	Fri Apr 11	6 30 p m	800	Steers	Wytheville Livestock Market	703 228 3201
*T Harrisonburg	Mon Apr 14	7 30 p m	1000	Steers	Rockingham Livestock Market	703 434 6765
T Front Royal	Tues Apr 15	7 00 p m	700	Steers & Heifers	Front Royal Livestock Market	703 635 5511
T Harrisonburg	Wed Apr 16	7 30 p m	1000	Steers	Shenandoah Livestock Sales	703 434 4482
T Charlottesville	Thurs Apr 17	10 00 a m	700	Steers & Heifers	Charlottesville Livestock Market	804 295 4551
T Culpeper	Thurs Apr 17	2 00 p m	1000	Steers	Culpeper Agri Enterprise	703 547 2188
T Marshall	Thurs Apr 17	7 00 p m	1000	Steers	Fauquier Livestock Exchange	703 364 1566
T Winchester	Fri Apr 18	10 00 a m	2000	Steers & Heifers	Farmers Livestock Exchange	703-667 1023
T Harrisonburg (Holstein)	Mon Apr 21	7 30 p m	1000	Steers	Rockingham Livestock Market	703 434 6765
T Culpeper	Thurs Apr 24	1 00 p m	1000	Steers & Heifers	Culpeper Agri Enterprise	703 547 2188
**T Blackstone	Thurs Apr 24	7 30 p m	600	Steers & Heifers	Blackstone Livestock Market	804 292 7277
T Harrisonburg	Mon Apr 28	7 30 p m	1000	Steers	Rockingham Livestock Market	703 434 6765

\*Sale will be mostly 500 lbs steers and up — Harrisonburg March 31 and April 14

Virginia Cattlemen's Association makes no warranties either expressed or implied warranties of merchantability or fitness for any purpose and makes no warranties with regard to the title of any cattle. The Seller warrants clear title to the animal and warrants that the calves have been vaccinated in accordance with the health plan listed for each sale. The Sellers do not warrant the future health of any cattle.

### WELCOME TO OUR VIRGINIA SPRING SALES

Buyers are requested to provide credit references prior to sales and make arrangements for feeding cattle left after the sale.

Vaccination — All sales require Blackleg Malignant Edema or 7 way col stridium after 3 months of age and prior to sale.

Grading — All cattle will be graded by the Virginia division of Markets livestock graders using the USDA Feeder Cattle Grade Standards.

G — Culpeper & Marshall Heifers guaranteed open

H — Dublin, Wytheville, Roanoke, Harrisonburg and Culpeper at Heifer Sale

B — Lynchburg Heifers calfhood vaccinated for brucellosis

\*\* Blackstone — IBR-P13 given on the farm

T Tel-O-Auction hook-up available at those sales indicated (T). The number of Tel-O-Auction hook-ups are limited. Buyers must call to reserve space at least 4 hours prior to sale. NO CHARGE FOR HOOK-UP. Buyers will call 703-382-1761 direct, 5 minutes prior to sale, for Tel-O-Auction hook-up. Only buyer cost will be your station to station call. TO RESERVE HOOK-UP SPACE, call the above number, the MARKET involved or the Virginia Cattlemen's Association 4 hours prior to sale.

FOR FURTHER INFORMATION contact the Livestock Market or

Raggle B Reynolds  
Exec Sec Va Cattlemen's Assoc  
P O Box 176 Daleville Virginia 24083  
703 992 1009 • 703 992 2852

Charles Potter, Jr  
Fieldman Va Cattlemen's Assoc  
Route 3 Lexington Virginia 24450  
703 463 3639

Joe Meek  
Fieldman Va Cattlemen's Assoc  
Rt 1 Draper Virginia 24324  
703 980 4481

34th Annual Virginia Spring Feeder Calf-Yearling Sales