

MAILBOX MARKET FOR SALE

IH 5606 tractor, NF, FH, PS, live PTO, dual hyd., lights, good cond., \$2,800. Mercer Co. 609-586-2869 after 5 p.m.

IHC 400 cyclo corn planter, 4 row 30" adjustable to 40", good condition, \$850. Chester Co. 215-857-9676

No till corn planter, 4 row, Oliver 543 dry fertilizer, insecticide boxes, monitor, \$2,500, or Best Offer. Cumberland Co. 717-697-4093

4 DV 300 milker units w/large claw and pulsator, good condition, \$400. per unit. Lanc. Co. 717-626-6765

IH 101 SP combine, hume reel, good condition, \$1,750.; Windrow turner, \$100.; 6 can side open milk cooler, \$200. 717-458-6008 or 458-5215

355 NH grinder mixer w/scales; 1976 Ford Granada, low mileage. Chester Co. 215-932-4312

AC hyd. reset plow, 4 bottom, semi mounted, Hillside hitch, like new. Also 5 curved coulters. Lanc. Co. 717-354-8232

Quarter horse, good trail rider, 11 yr. old, 15.2 hands, mare. Call if interested. Lanc. Co. 717-684-3007

Ford 132 5 btm. 16" plow, semi mount, \$1,000 3 row mechanical transplanter, \$1,000. Salem Co., NJ. 609-358-2213

2 row Holland transplanter, pull type w/2 90 gal. barrels, \$800.; '78 Ford LTD II Sport, sharp looking, \$1,700.; '79 Ford F600 stake body truck, \$6,900. Lehigh Co. 215-395-2732

Clean wheat & barley straw; Int. 3 btm. pull type plow, hyd. lift; Farmall H cultivator. Lancaster Co. 717-653-4285

9 yr. old sorrel carriage horse, good, broke. Also harness w/collar. AC 2 row corn planter. Lanc. Co. 717-354-5039

JD 1440 no till corn planter, 4 row dry fertilizer, insecticide, very good condition. Juniata Co. 717-527-4551

Oliver 4-16, 3 pt. cushion trip plow, \$600.; Heavy duty 3 pt. hitch fits Oliver 77 & 88, \$350. Both good condition. Cumberland Co. 717-243-0690 after 7 p.m.

Int. side rake no. 15, insulated camper shell w/insert for 8' bed. Lebanon Co. 717-867-2903

Int. mover no. 100 trailer type w/PTO, heavy duty farm wagon. Perry Co. 717-789-3266

1968 Int. dump truck, 7x9 bed, 345 V8, air brakes, new clutch assembly, 30,000 GVW, \$2,800. Leb. Co. 717-933-4062

1240 4 row JD corn planter, plateless, insecticides, monitor, excellent shape. Columbia Co. 717-799-5444

No. 420 3 pt. 3-16" IHC plows, excellent; Rotary 5 bushel hog feeder; 110 paddles for Jamesway barn cleaner. Juniata Co. 717-463-2842

2 BR mobile home on 1/2 acre with outbuildings, in very good condition, located in Mt. Pleasant Mills, Snyder Co., 717-359-8966.

Delta 10" tilting arbor bench saw, all cast iron construction, \$900. New. Selling Price, \$500. Lebanon Co. 215-589-4264

10" paper hammer mill, \$65.; JD 2 way h-drawn plow, \$125.; Blizzard 600 blower, \$60.; McPeak Farm, 48 Rt. 46, Hackettstown, NJ. 07840.

JD 1240 plate corn planter, min till, double disc, openers, rubber press wheels, good condition. Best Offer. Warren Co. 201-995-7439 after 5 p.m.

JD 3020 row crop, gas engine and syncro range trans. overhauled, painted, excellent rubber. Must Be Seen. Lanc. Co. 717-665-4329

12-26 tractor tire; NH 33 flail chopper; AC silage box; 1st cutting alfalfa; Grass hay. Lancaster Co. 717-548-3196

Used window air conditioner, 6800 BTU's, good condition. Best Offer. Chester Co. 215-273-2620

656 Diesel Int. tractor, hydrostatic, 3 pt., very good condition, \$5,700. Snyder Co. 717-658-2747

Purebred Romney and Romney Cross Ewe Lambs, excellent bloodlines, beautiful fleeces. Chester Co. 215-932-3577

Jamesway Barn Cleaner, real good shape, 100' of chain. York Co. 717-432-3869

McCormick grain binders, power take off, ground driven, good canvasses, good condition. 703-743-4253 after 5 p.m.

Pedigreed Netherland Dwarf & Holland Lop Rabbits. No Sunday Calls Please. Schuylkill Co. 717-345-6278

Clover Hay, Clover and Timothy Mixed, \$50. a ton or \$1.00 a bale at farm. Berks Co. 215-488-6869

IH 400 6 row planter w/monitor, dry fert., insect. & herb box, \$1,450. or Offer.; MH 82 combine cab, 12' head & 2 row corn head, \$1,600. or Offer. Col. Co. 717-925-2801

JD 640 roll bar rake w/rubber teeth and dolly wheel. 717-626-5532

NI 17 manure spreader. Columbia Co. 717-437-2362

AC 6080 '84 model, low hrs., original owner. Must see to appreciate. 215-683-7943

(1) NH 2 bottom clutch plow on steel, very good, grain binder, 8' and canvass. Berks Co. 215-589-2301

Sunbeam sheep shears, \$45.; Threshing machine (Ellis Keystone Champion), Agriculture works, Pottstown, Pa. \$250. Carbon Co. 717-386-5732

Oliver-White 5400 corn planter, 4 row, no till, monitor, insecticide, dry fertilizer, markers, double disc openers, \$2,000. Fulton Co. 814-735-4452

Harness; Saddles; Road Cart; Lamps. 215-843-1276

730 Case gas on steel, eagle hitch; IH 56 2 row corn planter, good, \$475. Lanc. Co. 717-354-4768

JD wide front or trade on narrow; 71 Cub Cadet w/mower, \$625.; White front end weights. Adams Co. 717-334-1824

1,000 bu. Noble oats from last years certified seed; 400 bales timothy/alfalfa mixed hay; 1,000 bales Bright straw. Northumberland Co. 717-672-9740

Jersey family cow, fresh Nov. 1985, fine disposition, good milker, 2 yrs. old, \$450. Berks Co. 215-856-5000

DeLaval 55# sterling milk, \$425.; NH 455 trailer mower, \$595.; Pequea hay tedder, \$595.; NI 323 picker, \$1,575.; JD silage wagon, \$975. 717-354-0266

1 pair Amherst Pheasants. Lancaster Co. 717-733-8090

Open Carriage, 7 yr. old w/fiberglass; spring wagon, 7 yr. old; New breaking carts. Bennie King, R.D.1, Box 58, Buck Rd., Quarryville, Pa. 17566.

10 yr. old std. bred carriage horse, safe & sound, \$485. Harvey H. Martin, R.D.1, East Earl, Pa. 17519. South of Bowmansville.

1971 crew cab Ford, state inspected, AT, AC, dual gas tanks, topper w/camping insert, \$1,700. York. Randy Eisensmith. 717-266-2982

20 quart dough mixer, good condition. E.B. Stoitzius, 2966 Stumptown Rd., Ronks, Pa. 17572.

324 NI picker sheller, \$1,450.; 1970 Chev. 30, 12' flat dump, \$850.; Long 97 h.p. tractor w/354 Perkins diesel, \$3,500. Berks. 215-944-7529

Star wheel cultivator guards for 4 row cultivator; Sauder loader w/dirt, snow and manure buckets. Wayne Co. 315-923-9833

1970 IH 2000 tandem axle, 250 h.p. Cummins, 10 spd. Road Ranger, 20' flatbed dump w/grain sides, \$10,000. Lanc. Co. 717-626-5438

8' Oliver transport disc, new discs, new paint, nice condition; Excellent quality Timothy Hay, \$1.10/bale or \$60./ton. Adams Co. 717-624-8992 nights.

Roller for David Bradley tractor, \$40.; 17 reel type push mowers, \$12. each. York Co. 717-755-9418

1977 Chrysler New Yorker Brougham, power steering, brakes, windows, seats, antenna, 89,000 miles, some rust, \$850. Lanc. Co. 717-653-2585

AC Bush Hog 5' 3PTD with o/r clutch built in; 22 Fruehauf flat trailer, single axle. 301-394-7680.

Sears 725 lawn tractor w/42" mower, cultivator, snow blower, front blade, recently overhauled. Asking \$500. Lanc. Co. 717-442-4498.

High Performance... A HiPerForm Standard Feature!



MUELLER HiPerForm

No other cooler offers so many high performance features.

Used Tanks & Compressors Available

MARTIN'S REFRIGERATION SERVICE

Phone (717) 352-2783 Sales & Service

1122 Woodstock Rd Fayetteville, Pa 17222

PUBLIC SALE

OF FARM MACHINERY, HOUSEHOLD ARTICLES, ETC.

Due to selling their farm, the undersigned will offer the following for public sale located north of the village of Oakville, Pa.; if leaving Shippensburg, Pa. on Route 11 north 2 miles, turn left on Route 533 approx. 4 miles to Oakville crossroads, left thru Oakville to sale site. Watch for sale signs on:

SATURDAY, APRIL 5, 1986

Beginning at 10:00 A.M.

Farm Machinery, etc.

1981 #4100 Ford diesel tractor w/wide front end, manual trans. (8 forward & 2 reverse), high & low range, live pto, 3 p.h., power steering, good rubber, runs & looks fine; A.C. WD tractor w/narrow front end, like new rubber on rear, runs & looks good; N.I. #323 pto pull type 1 row corn picker (very good cond.); N.H. #273 Hayliner pto baler w/thrower; N.H. #479 haybine; #501 Ford 3 p.h. tractor mower (7 ft.); Int. #16 pull type one row forage harvester; N.H. #38 pto crop chopper; Schultz flail chopper; Ford #606 silage blower; Kasten 16 ft. forage wagon; 3 Grove bale wagons w/wooden racks; 3 - 14 ft. flat bed wagons; 3 grain bin wagons; Lilly 3 p.h. wheel rake; Ford 3 p.h. 2 row corn planter; Hawk Bilt pto drum type manure spreader; 9 ft. double disc harrow; cultipackers; other harrows; bush hog; 10 ft. weeder; rotary fertilizer spreader; tank type sprayer w/pump on rubber; N.H. 32 ft. hay & grain elevator; Little Giant elevator w/bin wagon unloading hookup; grain auger; Ford tractor wheel weights; metal water troughs; metal hog troughs & feeders; misc. small items from wagon; and other items not mentioned.

Order of Sale: 10:00 A.M. small household articles, furniture, etc.; approx. 11:30 A.M. small items from wagon, followed by farm machinery & other farm equipment.

Household Articles

Frigidaire Deluxe elec. range; Magic Chef bottle gas range; Frigidaire portable dishwasher; living room furniture; some antique furniture of various kinds and other items not mentioned.

Terms - Cash or Approved Check.

MR. & MRS. DONALD E. REESE

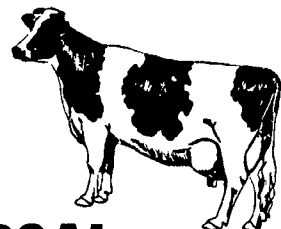
Auctioneers - Hershey, McLaughlin & Martin

Lic. #AU-000406-L

Clerk - Beidel

Not Responsible for Accidents Identification Required For Bidder's Number. Lunch Stand Reserved.

WOOD'S SALE CALENDAR JONES COMPLETE DISPERSAL



Located 2 miles off Rt. 15 Covington, Pa. 3 miles from Mainesburg, 6 miles from Mansfield. Watch for arrows off Rt. 15 at blinker light in Covington.

MONDAY, APRIL 7, 1986

at 1 o'clock sharp

45 Reg. & High Grade Holsteins, Jerseys & Linebacks-45

9 Reg. Jerseys, 1 Reg. Holstein, 3 Linebacks

Herd consist of 28 mature cows, 5 bred hrs. & 9 from started calves to yrings. 3 cows fresh Sept., 3 Oct., 3 Nov., 5 Dec., 2 Jan., 4 Feb. balance in various stages of lactation. Interstate tested, preg. ex charts day of sale.

MACHINERY

C Farmall tractor w/2 pt. hitch; M. Farmall & loader; Oliver 77 (needs repair); New Idea avco spreader 2 yrs. old (nice); JD 3800 chopper w/1 row corn & pickup heads; N.H. 269 baler w/kicker, IHC 990 haybine; Grimm hay tedder; N.H. 55 side rake; Ford 2 row corn planter; 2 bottom plow 2 pt hitch; N.H. 50 elev. w/motor; 1 metal kicker rack & gear; 1 old kicker rack & gear; grain drill; 3 Surge milkers (1 w/nu pulse head); 5 baler twine & few small barn tools. Selling order machinery 1:00 sharp, cattle approx. 2:00.

PRODUCE

Approx. 1000 bales hay; 150 bales straw; 20' of good corn silage in neighbors silo.

Sales Mgr. Note

This is one of the better uddered herds we have had to sell in a long time. Cows are averaging right at 50 lbs. You will also appreciate these Jersey's & Line backs some fancy udders that show a lot of milk.

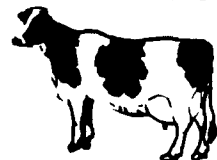
Terms: Cash or Good check.

Sale under cover

Lunch available

Owners- **RON JONES** 659-5637 659-5494

CLYMAR FARMS COMPLETE DISPERSAL



Located 3 miles off Rt. 706, near Rushville, PA, 12 miles from Wyalusing, 16 from Montrose, 21 from Towanda, PA. Watch for auction arrows off Rt. 706 by gas station.

SATURDAY--APRIL 12 at 10:00 SHARP

91--Reg. & High Grade Holsteins--91

Full line of farm machinery, including 8600 Ford diesel trac., w/cab & New rubber, Case 870 diesel w/power shift, 2 horse trailer.

Construction Equipment

JD 755 loader, JD 750 dozer w/tilt blade, Cat 60 pan, old earth mover. Watch for full listing.

Owners- **CLYDE & ROBERT WILSON** 717-934-2529

11TH ANNUAL CONSIGNMENT SALE

Located on the Gordon Wood Farm on Rt. 15 between Tioga & Lawrenceville, Pa., across from Woodshed Rest.

SATURDAY--APRIL 19-- Time To Be Listed Later

We already have a complete line of farm machinery from one farmer & approx. 50 other pieces of equip. Be sure and get your consignments in early for proper advertising. In the past 10 yrs. we have had satisfied customers, both buyer & seller. Bring the items you don't need and perhaps pick up some you do need, also get your equip. on sale site early so people can look. We have a good sale site on Rt. 15 it all helps. No junk please. Watch for full listing.

Sales Mgr.: Gordon Wood--Mansfield, PA Phone 717-549-4901

For the most in advertising coverage & preparing your sale, Call Wood's Auction Service

Col. E. W. Elmira, Mansfield