

Livestock market and auction news

Indiana Livestock

Homer City, Pa.

Thursday, March 27

Report supplied by PDA

CATTLE: 216. Steers and heifers steady to strong; cows fully steady; Choice 52.00-56.00; Good 49.00-52.25; Standard 44.00-49.50; Choice heifers 51.00-55.00; Good 47.50-50.50; Standard 41.25-45.00; cows Utility & Commercial Breaking 36.00-39.50; Cutter & Boning 34.00-37.25; Canner & Cutter 30.50-34.50; YG No. 1, 1150-1900 lb. 43.00-48.50; No. 2, 900-1500 lb. 40.00-43.50.

FEEDER CATTLE: Steers few Med. 1, 380-600 lb. 50.00-58.00; bulls few Med. No. 1, 600-900 lb. 46.00-55.00.

CALVES: 152. Good 64.00-71.00; 90-120 lb. 44.00-50.00; 60-85 lb. 40.00-45.00; holstein bulls 90-125 lb. 70.00-88.00.

HOGS: 162. 1.00 lower; No. 1-2, 215-250 lb. 41.00-42.00; No. 1-3, 210-260 lb. 40.25-41.10; No. 2-4, 250-275 lb. 37.50-38.50; No. 1-3 sows 350-600 lb. 40.00-43.50; No. 2-3, 400-600 lb. 37.00-40.00.

FEEDER PIGS: 58. 25-40 lb. 18.00-24.00; 40-55 lb. 28.00-33.00.

SHEEP: 31. Mixed Good & Choice 30-40 lb. 70.00-73.00.

GOATS: 20. 10.00-40.00.

Peoria Cattle

Thursday, March 27

Report Supplied by USDA

Compared with last week, Slaughter steers closed steady to firm, instances .50 higher. Heifers steady to 50 higher. Demand light to moderate on steers and heifers. Cows closed mostly 1.00 higher. Bulls scarce. Supply mainly good to average choice slaughter steers and heifers with 13% cows. Estimated receipts for this week about 1000, a week ago 1209, and a year ago 957.

SLAUGHTER STEERS: Choice 2-4, mostly 3 1100-1300 lbs. 55.00-56.00, part load 56.50; 950-1100 lbs. 54.00-55.50. Mixed good and choice

2-3 1000-1200 lbs. 52.00-55.00. Good 2-3 900-1050 lbs. 50.00-52.50.

SLAUGHTER HEIFERS: Choice 2-4, mostly 3 1000-1150 lbs. 54.00-55.25; 875-1000 lbs. 52.00-54.50. Mixed good and choice 2-3 950-1100 lbs. 49.50-53.00. Good 2-3 800-950 lbs. 47.00-50.00.

COWS: Cutter and boning utility 1-2 33.00-37.00, high dressing 38.00-40.00. Canner and low cutter 30.00-34.00.

BULLS: Not enough for a quote.

Chambersburg Livestock

Chambersburg, Pa.

Thursday, March 27

Report supplied by PDA

CATTLE: 288. Couple Choice steers 52.75 & 54.00; few Standard 40.00-43.00; few Choice heifers 49.85-56.85; few Standard 40.00-45.00; Breaking Utility & Commercial cows 37.50-41.00; Cutter & Boning 36.00-38.75; Canner & Cutter 33.25-36.25; YG No. 1, 1185-1920 lb. 42.50-49.85.

FEEDER CATTLE: Steers few Med. No. 1, 500-825 lb. 47.00-61.00.

CALVES: 383. Few Choice 85.00-96.00; few Good 51.00-69.00; 90-110 lb. 46.00-50.00; 70-90 lb. 38.00-48.00; holstein bulls 90-130 lb. 65.00-110.00.

HOGS: 44. 2 lots of No. 2-3, 245-250 lb. 39.10-39.25; few No. 1-3 sows 400-550 lb. 31.75-35.50.

FEEDER PIGS: 7. 1 lot 30 lb. at 26.00.

SHEEP: 7. 1 lot 57 lb. 74.00.

GOATS: 14. Few Large 21.00-28.00.

Joliet Cattle

Thursday, Mar. 27

Report Supplied by USDA

CATTLE: Sales this week 625; last week 670; and a year ago 494. Slaughter steers and heifers ended the week mostly 1.00, few instances 1.50 higher.

SLAUGHTER STEERS: Choice 2-4 1150-1300# 55.50-57.50. Mixed Good and Choide 2-3 1050-1200# 53.00-55.50.

SLAUGHTER HEIFERS: Choice 2-4 950-1100# 54.50-55.75, one load 56.25 Wednesday. Mixed Good and Choice 2-3 900-1050# 52.00-55.00.

North Jersey Livestock

Hackettstown, NJ

Tuesday, March 25

Report supplied by auction

Calves- 29.00-89.00.

Cows 31.00-42.00.

Easy Cows 22.00-43.50.

Heifers 35.00-52.00.

Bulls 38.75-50.50.

Steers 38.00-54.50.

Hogs 30.00-45.00.

Roasting Pigs, each 25.00-37.00.

Sows 28.00.

Sheep 5.00-60.00.

Lambs, each 26.00-70.00.

Lambs, per lb. .29-.98.

Goats, each 13.00-72.00.

Kids, each 8.00-45.00.

Hides 10.00-23.00.

Total 1795.

Leesport Livestock

Leesport, PA

Wednesday, March 26, 1986

Report Supplied by PDA

CATTLE 200. Compared with last Wednesday's market: Slaughter steers \$2 to \$4 higher; Breaking Utility & Commercial Cows weak 75 cents lower; Cutter & Boning Utility strong to 75 cents higher; Choice steers 1100-1375 lbs. 56.85-59.25, Good 52.00-56.00, Good & Choice 1200-1450 lbs. Holsteins 49.00-51.60, one 52.25, Standard 45.10-50.25, Few Choice Slaughter heifers 51.00-54.00, one at 52.25, Good 44.00-50.00...Breaking Utility & Commercial slaughter cows 37.25-40.00, few 41.00...Cutter & Boning Utility 35.25-38.00...Canner & Low Cutter 32.00-35.50...Shells down to 26.75, Good sl. bullocks

46.75-51.75, Few Yield Grade No. 1 1100-2000 lbs. slaughter bulls 43.50-50.00...**FEEDER CATTLE:** Few Medium Frame #1 300-450 lbs. 60.00-68.50, Few 600-900 52.00-55.50, Few Large Frame #2 300-1100 lbs. 44.00-50.00...**HEIFERS:** Few Large Frame #2 480-750 lbs. 37.00-41.50...Few Large & Medium Frame #1 Bulls 300-400 lbs. 61.00-66.00, Medium Frame #1 475-600 lbs. 54.00-60.00.

CALVES 156. Vealers Grading Standard & Low Good steady to \$5 higher...Few Choice vealers 85.00-89.00, one at 99.00, Good 66.00-86.00, Standard & Good 90-105 lbs. 45.00-50.00, few at 76.00, 70-85 lbs. 42.00-45.00, Few Utility 55-70 lbs. 30.00-40.00...**FARM CALVES:** Holstein Bulls 90-125 lbs. 70.00-89.00, some lower at 50.00...Few Holstein Heifers 85-105 lbs. 49.00-68.00...Few Beef Cross Bulls & Heifers 65-120 lbs. 65.00-83.00.

HOGS 427. Barrows & Gilts 50 cents to 1.25 lower...US No. 1-2 215-255 lbs. 40.35-41.00, one lot at 42.10...No. 1-3 195-260 lbs. 38.75-41.25, mostly 39.75-40.25...No. 2-3 220-250 lbs. 38.75-40.00, few lower at 38.00...few No. 1-3 175-195 lbs. 35.50-36.00, few No. 2-4 240-280 lbs. 35.00-39.00...Sows \$1 to \$2 lower...US No. 1-3 300-480 lbs. sows 32.00-34.00, few at 42.00, No. 1-3 500-570 lbs. 34.00-37.25...Few **BOARS** 28.00-31.25...Few Light Weights 32.75-33.50.

FEEDER PIGS 91. US No. 1-3 60-70 lbs. feeder pigs 71.00-77.00 per hundred weight, Few No. 2-3 at 40 lbs. 89.00-96.00 per hundred weight.

SHEEP 216. **BULK OF SUPPLY SOLD TO EASTER TRADE.** Choice 25-40 lbs. Spring Slaughter lambs 100.00-127.50, few to 145.00, 40-50 lbs. 85.00-101.00, 65-85 lbs. 80.00-87.00 couple at 93.00, Good 25-

40 lbs. 85.00-102.50, few Good 65-70 lbs. 74.00-77.00. Slaughter Sheep 15.00-21.00.

GOATS 105: Medium & Large Adults 25.00-44.00, few at 57.00...Medium & Large Kids 23.00-41.00, few at 45.00...Small Kids 10.00-16.00 all per head.

Carroll Co. Hay

Westminster, Md.

Tuesday, Mar. 25, 1986

Report supplied by auction

47 loads. Alfalfa, very gd., 91.00-116.00; good, 69.00-80.00; fair, 60.00-63.00; 1.65 bale.

Timothy, 67.00-90.00, 1.15-1.40 bale; Clover, .70 bale; Clover and Timothy, 55.00-80.00, .90-1.40 bale. Clover and Orchard Grass, 79.00; Alfalfa and Grass 82.00; Alfalfa and Timothy, 1.40 bale; Orchard Grass and Timothy, 1.50 bale.

Straw, wheat straw, .85-1.40 bale; Oats Straw, 58.00-77.00, 1.25 bale; Rye Straw, 64.00.

Locust Posts, 1.40 ea.; Wood, 81.00 cord.

Good's Hay

Leola, PA

Wednesday, March 26

Report supplied by Auction

117 loads.

Alfalfa, 66.00-133.00; Timothy 60.00-88.00; Straw 36.00-85.00; Ear Corn 70.00-76.00; Mixed Hay 49.00-143.00; Oats .85-1.75/bu.; Corn Fodder (1 load) 35.00.

HYDRO SEEDING ALFALFA

With our modern flotation equipment we can offer accurate and dependable seeding of your alfalfa. We can seed mixed stands of alfalfa and grass.

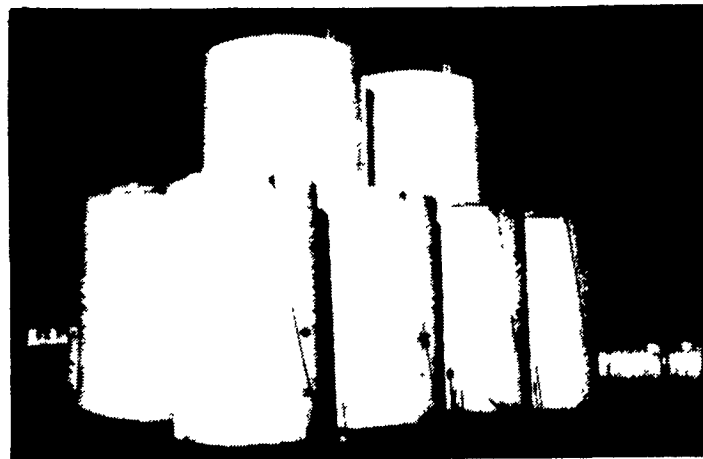
Forry's Ag Service, Inc.

is a dealer of these alfalfa seeds

MAGNUM EPIC FUTURA BIG TEN

APOLLO ARMOR ARROW

Also, Timothy & Orchard Grass and Rye Grass.



Specializing
in
Fluid
Fertilizer

CHECK THESE ADVANTAGES IN LIQUID SUSPENSION FERTILIZER

With our liquid blending plant we can offer a custom mixed liquid fertilizer for your specific crop need.

- We can apply herbicide and insecticide on one application.
- Liquid fertilizer is more immediately available to your crop.
- Liquid fertilizer is applied more evenly and does not segregate.



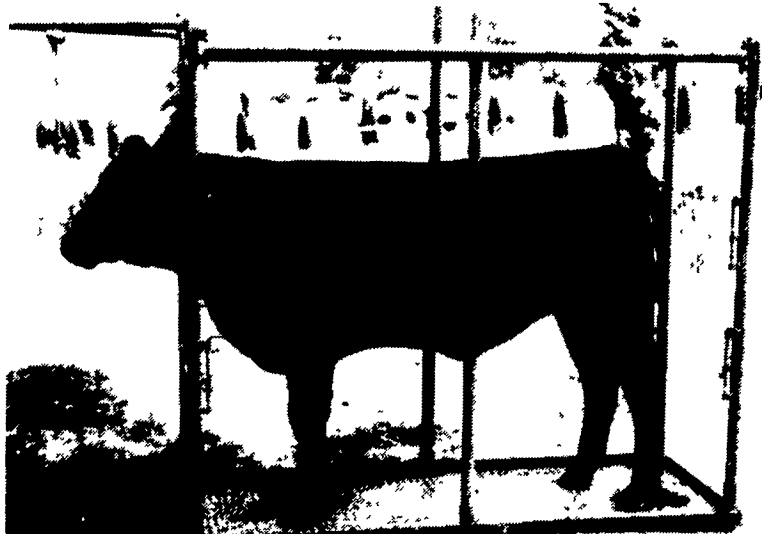
Find Out How Competitive Our Fertilizer Prices Can Be.



2020 Horse Shoe Rd., Lancaster, PA
Ph. 717-397-0035



BLOCKING CHUTE



- For safe and easy grooming, washing and clipping cattle
- Expanded metal floor stays cleaner and gives more traction
- Assembles and disassembles quick and easy
- Can easily be moved and loaded by one person

PAUL B. ZIMMERMAN, INC.

Call or Write For
Additional Information
And Your Nearest Dealer

295 Woodcorner Rd
Lititz, PA 17543
1 Mile West of Ephrata
Phone: 717-738-1121