

Frederick Livestock Auction

Monday, March 17, 1986

Butcher Cows, mostly steady to \$1 higher. Good, 38.00-40.00; standard, 33.00-37.00; Canners, 30.00-33.00. Shelly, \$31 and down.

Bulls, Good, \$43.50-44.25; Medium, 42.00-43.00; Heifers, medium, 38.00-39.25. Butcher hogs, steady, 220-240 lbs., 40.25-41.25; 190-215 lbs., 37.00-39.50; Sows, 500-600 lbs. 35.00-39.00; 300-400 lbs. 30.00-35.00. Veal Calves, steady to \$1 lower. Good, \$65.00-70.00; Standard, 60.00-64.00; Stocky and Thin, 55.00-59.00; light calves, 43.00-50.00; weak and rough, 42.00 and down. Calves returning to farm, \$2 higher. Holstein heifers, 90-120 lbs., \$50.00-60.00; Holstein bulls, 85-95 lbs., 75.00-89.00; 100-115 lbs., 90.00-100.00. Lambs, very active; good and choice, 67.00-71.00; medium 60.00-66.00.

STOCK CATTLE: \$1 to \$2 higher. Steers- Choice, \$62.00-65.00; Good, 56.00-61.00; Medium, 50.00-55.00. Heifers, Good, 45.00-

47.50; Medium 40.00-44.00; Bulls, medium to good, 45.00-50.00. Springing Heifers, up to \$725. Pigs & Shoats, \$3 higher. By the head: 40-70 lbs., 30.00-39.00; 20-35 lbs. 20.00-29.00; By the pound, \$35.00-38.00.

Strong demand for open butcher cows on March 24.

Dewart Livestock

Dewart, Pa.

Monday, Mar. 17

Report Supplied by PDA

CATTLE 216. Compared with last Monday's market: Slaughter cows steady to \$1.25 lower. Low to average Choice 1000-1350 slaughter steers 53.00-55.75, one at 57.60, Good 48.00-53.00, Choice Holsteins 48.00-51.00, Good 45.25-47.50, Standard 41.50-45.25...Few Choice slaughter heifers 50.00-53.50, Few Good 48.25-50.00, Breaking Utility & Commercial slaughter cows 35.50-38.85, Cutter & Boning Utility 33.75-36.75, Canner & Low Cutter 31.00-33.75, Shells down to 28.00...One Good Slaughter Bullock at 47.50, Few Yield Grade No. 1 1185-2165 lbs. slaughter bulls 42.50-

45.10...Few Large Frame #1 680-880 lbs. heifers 48.0-51.00...Few Large Frame #1 680-1000 lbs. Bulls 46.00-52.00.

CALVES 234. Few Choice Vealers 95.00-100.00, Few Good 65.0-80.00, Few Standard & Good 110-130 lbs. 58.00-62.00, 75-100 lbs. 48.00-55.00, Utility 60-85 lbs. 40.00-46.00...FARM CALVES: Holstein Bulls 90-130 lbs. 75.00-118.00, mostly 85.00-110.00.

HOGS 90. Barrows and Gilts about steady. US No. 2-3 215-250 lbs. Barrows & Gilts 41.60-42.90, US No. 1-3 300-580 lbs. sows 33.75-39.25...Few Boars 29.50-30.00.

FEEDER PIGS 75. US No. 1-3 25-40 lbs. feeder pigs 25.00-30.00 per head, No. 1-3 40-50 lbs. 30.00-38.00 per head.

SHEEP 41. Choice 60-115 lbs. Spring Slaughter Lambs 70.00-90.00, Few Choice 12-45 lbs. 125.00-325.00, Good 50-80 lbs. 60.00-65.00, Slaughter Ewes 18.00-32.00.

Westminster Livestock Auction

Hagerstown, Md.

Tuesday, March 18

Report supplied by auction

SLAUGHTER COWS: good run, \$1 higher. High yield to \$39.50; Utility, 35.00-38.50; Canners, 32.00-36.00; Shellys, 32.00 and down. Bulls, good, 45.00-47.25; standard, 40.00-45.00; fed heifers, good, 50.00-52.00; commercial, 40.00-43.00; Fed steers, few choice to 57.75; good, 51.00-55.00; standard, 41.00-45.00. Veal calves, choice, 90.00-96.00; good, 70.00-90.00; standard, 55.00-70.00; killers, 80 to 100 lbs., \$42.00-50.00; weak and rough, 40.00 and down. Farm calves, good demand for Holstein bulls, 105-125 lbs., 72.00-107.00; 95-100 lbs., 66.00-89.00; Holstein heifers, 100-155 lbs., 55.00-63.00; Butcher hogs, strong demand. US 1 & 2, 215-240 lbs., 41.00-41.50; 240-260 lbs., US 2 & 3, 36.00-38.00; 195-210 lbs., US 1 & 3, 39.00-40.00; Sows, 500 lbs. and up, 38.50; 300-500 lbs., 33.00-37.00; Boars, 400-600 lbs. 26.00-27.50.

STOCK CATTLE: 150 head.

Prices steady. Steers, 300-500 lbs., good and choice, 56.00-67.00; 500-700 lbs., a few to 62.00; 850-1,000 lbs., good, 48.00-52.00; few to 53.00-55.00; Holsteins, 400-800 lbs., 42.00-50.00; a few to 54.00; Heifers, 300-600 lbs., choice 53.00-58.00; good, 48.00-52.00; Bulls, 300-500 lbs., choice 60-65.00; good, 53.00-59.00; 500-700 lbs., choice 54.00-57.00; good, 45.00-53.00. Lambs, 30 head. Few good; 25 to 45 lbs., 82.00-96.00; choice, 60-80 lbs., 71.00-78.00; good and choice, 100-125 lbs., 67.00-72.50. Choice, 140-155 lbs., 48.00-58.00; Sheep, 27 head. 16.00-37.00; Mainly priced from 22.00-27.00. Goats, 70 head, good kids, 20.00-30.00; small kids, 12.00-20.00; medium mature, 30.00-35.00; few large, 45.00-50.00. Pigs and shoats, 60 head. Good pigs scarce, 20-30 lbs., 22.00-35.00; 30-40 lbs., 25.00-31.00; By the pound, stock boars, 200-250 lbs., 28.50-34.00.

Next state graded feeder pig sale will be Good Friday, March 28.

ATTENTION FARMERS

The New Way To Market Your Livestock

HATFIELD PACKING CO. AND **MOYER PACKING CO.**
Will Receive Hogs Will Receive Cattle

At The

BLAIR-BEDFORD BUYING STATION

RD 1 Martinsburg, Pa.

Easter Lamb and Kid Goat Sale
March 20th

MONDAYS - Hogs 8 AM to 11:30 AM
Cattle & Calves 8 AM to 3 PM

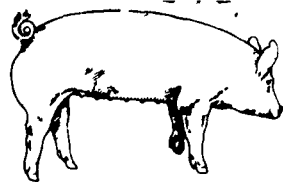
THURSDAYS - Cattle & Calves
8 AM to 3 PM

- No commission or yardage fees deducted from check
- Livestock weighed and paid for immediately
- You may call our office sale day for prices

DALE R. HOOVER - Owner

Business 814-793-3077

Residence 814-793-2657



EMERY'S BUYING STATION

OPEN TO RECEIVE YOUR MARKET HOGS

AT THE GREEN DRAGON MARKET
RD 4, EPHRATA, PA 17522
1 MILE NORTH OF EPHRATA
ON NORTH STATE STREET.

HOURS: MONDAY, TUESDAY, and WEDNESDAY 6:00 A.M. to 11:30 A.M.
215-458-5677 Residence
717-733-9648 Office

YOU ARE PAID FOR YOUR HOGS IMMEDIATELY

Ken & Lois Emery, Proprietors

Green Dragon Livestock Sales



Location: Ephrata RD 4. 1 mile N. on North State St., Ephrata.

COWS COWS COWS
SALE EVERY FRIDAY

Lots of good Northern Feeder & Stockers Slaughter Cows - Bull Steer, Veal-lamb.

11:00 A.M.-Beef Sale 200-300 each week.

1:00 P.M.-Dairy Sale.

7:00 P.M.-Small Animal Sale.

For Special Sales and Herd Dispersals on farm or at our barn or other market information call: Office 717-733-2444, Home 717-838-4318.

WALTER H. RISSER, Proprietor

All out of state and new buyers must have cash or certified check or current letter of credit from bank.

HAY & STRAW SALE

12:00 Noon

Every Wednesday
Westend of Avondale
at the intersection of
Baltimore Pike and
Route 41.

Harvey Z. Martin
215-268-3604
(Office)
215-445-5303
(Residence)

KING'S AUCTION

KIRKWOOD

Hay, Straw and
Grain Auction
EVERY TUESDAY

12:00

Located Rt 472 5 miles south
of Quarryville or 6 miles north
of Oxford at Shaub's Auction
House

Lloyd H. Kreider,
Auctioneer
AU-000513L

No out of state checks
**ALL TRUCKERS AND
FARMERS WELCOME**

FUTURES

- **INQUIRIES ARE INVITED**
- **EVERY PHONE CALL IS ANSWERED DIRECTLY BY A COURTEOUS COMMODITY BROKER**
- **EACH OF OUR THREE BROKERS ARE REGISTERED FOR MORE THAN 18 YEARS**
- **WE PROVIDE FREE SPEAKERS FOR VARIOUS GROUPS, UNIVERSITIES AND COLLEGES**

SPECIALIZING IN COMMODITIES EXCLUSIVELY
Call For Information

Plus Our

FREE

MARKET LETTER
featuring a
Special Situation Suggestion!

IN PENNSYLVANIA
CALL

(800) 322-9274

ALL OTHER AREAS
(800) 523-9388

ALLENTOWN
(215) 821-8111

Rosenthal & Company

2200 Hamilton Street,
Suite 102,
Allentown,
Penna. 18104

Members of All Principal
Commodities Exchanges



"WANTED" LEGHORN FOWL



NEW SANITIZED CAGE CART SYSTEMS OR COOPS

Call Richard Sechler,
Tom Feger, Nelson Legge
for quotations

PA Watts # 800-342-2249
or call collect 215-488-7617

SECHLER'S POULTRY, INC.
Box G, Strausstown, PA 19559