

State prepares for U.S. Ayrshire meeting

GRANTVILLE — The Pennsylvania Ayrshire Association held its annual dinner meeting last weekend, making final preparations for the National Ayrshire meeting to occur here next month.

The group selected Wesley Harding of Lebanon as its contestant for the Outstanding Ayrshire Boy contest. He is one of

three finalists for the honor. The group also is recruiting youth members for the National Junior and senior Dairy Bowl teams.

The association also began looking forward to the Pennsylvania Junior Dairy Show, which last year increased 24 head and had the second highest number of entrants at the show. The group will sponsor an owner-breeder

class at the event next year.

The Ayrshire breeders also voted to support the Crawford County all-breed calf sale with a number of consignments, and

slated an elite Ayrshire Sale Sept. 23 in conjunction with the Pennsylvania All-American Dairy Show. Richard Engelbrecht, sale manager, said pedigrees on all consignments should be submitted by Aug. 1.

Reports also indicated that a sixth young Ayrshire sire is being

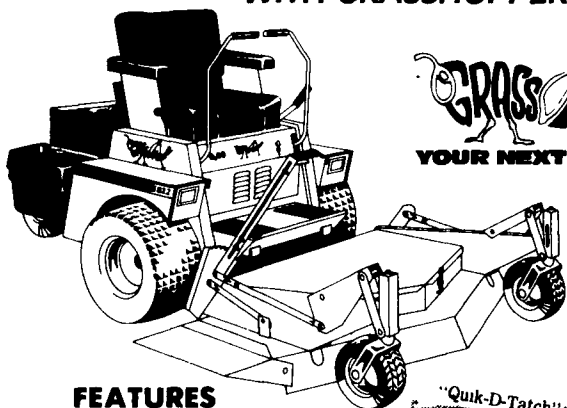
sampled, and a seventh will be tested soon.

The group will hold its annual field day at the Paul R. Kemerer farm in Latrobe on July 19.

The organization recommended John Morris, William Etgen of Blackburg, VA, and Obie Snider of Imler as judges for the 1987 Farm Show.

NOW YOU CAN STAY AHEAD OF YOUR MOWING SCHEDULE

MOW AND FINISH TRIM IN ONE TIME-SAVING OPERATION WITH GRASSHOPPER



GRASSHOPPER
YOUR NEXT MOWER

FEATURES

1. ZERO TURNING RADIUS ELIMINATES HAND TRIMMING (Because your mower deck is out front)
2. ALL HYDROSTATIC DRIVEN
3. MOWER P.T.O. SHAFT DRIVEN
4. ELECTRIC CLUTCH (Some Models)



FREE Model 2044 Mower Deck (Value \$756) With The Purchase Of A **12 H.P. GRASSHOPPER**
FOR ONLY...\$3,156
Plus Setup & Freight

Purchase A 16 H.P. GRASSHOPPER And Receive A Model 6044 Mower Deck FREE (Value \$812)

Other Models Up To 18 H.P., Including NEW WATER-COOLED DIESEL Available At Any Of The Following

DEALERS

PENNSYLVANIA

BERKS CO.

ERB & HENRY EQUIP., INC.

New Berlinville PA
Ph 215-367-2169

STANLEY A. KLOPP INC.

Berwyn PA 19506
Ph 215-488 1500

MERTZ LANDSCAPING
Kutztown, PA
Ph 215-683 6260

BUCKS CO.

R.W. KELLER SALES

Perasie PA
Ph 215 257 0101

THE LAWN BARN, INC.

Langhorn PA 19047
Ph 215 757 7030

CHESTER CO.

LORD'S EQUIP.

Elverson PA
Ph 215 286 9101

STOLTZFUS FARM SERVICE

Cochranville PA 19330
Ph 215 593 2407

COLUMBIA CO.

BALSCHI'S EQUIP.

Catawissa, PA
Ph 717 356 2341

CUMBERLAND CO.

PETERMAN FARM EQUIP.

Carlisle PA
Ph 717 249 5338

FRANKLIN CO.

SHANK'S LAWN EQUIP.

Chambersburg PA
Ph 717-375 4455

LANCASTER CO.

GRUMELLI'S FARM SERVICE

Quarryville PA 17566
Ph 717 786 7318

LAWN CARE OF PA

Martindale, PA
Ph 215-445 4541

MESSICK FARM EQUIP.

Elizabethtown PA
Ph 717 367 1319

LEBANON CO.

HEISEY FARM EQUIP. CO.

Jonestown PA
Ph 717 865 4526

UMBERGER'S OF FONTANA

Lebanon, PA
Ph 717-867 5161 & 867 2613

LEHIGH CO.

KERMIT K. KISTLER, INC.

Lynnport PA 18066
Ph 215 298 2011

LYCOMING CO.

C.H. WALTZ SONS

Cogan Station, PA
Ph. 717-435-2921

MIFFLIN CO.

RON'S IGA FRUIT MKT. INC.

Reedsville PA
Ph 717 667 3978

MONROE CO.

STOUT'S MOWER SERVICE

Stroudsburg PA
Ph 717 992 4585

MONTGOMERY CO.

RADCLIFF'S SHARPENING SERVICE INC.

Horsham, PA 19044
Ph 215-672-6640

NORTHAMPTON CO.

SCHREIB & SON

Bath, PA
Ph 215-837 7681

YORK CO.

GUS FARM EQUIPMENT

Seven Valleys, PA
Ph 717 428 1967

STRALEY FARM SUPPLY, INC.

Dover PA
Ph 717 292 2631

NEW JERSEY

BERGEN CO.

D. & H. MACHINERY CO.

Mahwah NJ 17430
Ph 201 327 6750

HUNTERDON CO.

ADAM JAKELSKY, JR.

Flemington, NJ 08822
Ph 201 996 3105

MERCER CO.

MILLER EQUIPMENT CO.

Robbinsville NJ
Ph 609 587 9666

MARYLAND

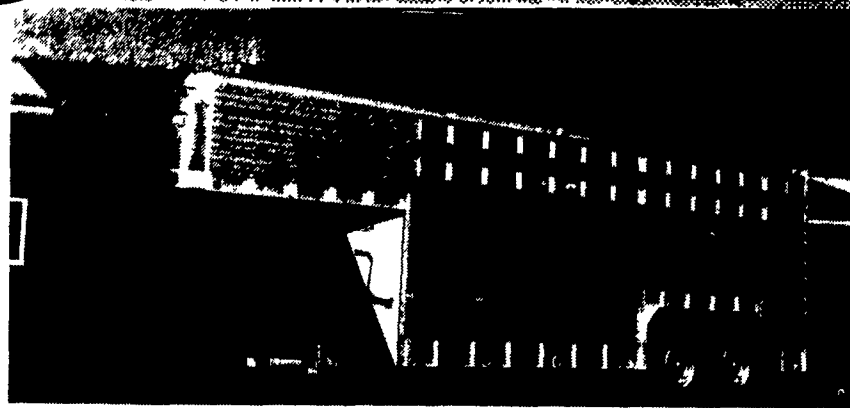
CARROLL CO.

RAINBOW FARM CENTER, INC.

Taneytown, MD 21787
Ph 301-751-1500



ALUMINUM GOOSENECK TRAILERS



ATTENTION FARMERS & LIVESTOCK HAULERS:

ALUMINUM EBY GOOSENECK TRAILERS, Standard Specifications:

LENGTHS AVAILABLE: 14' to 28' (longer lengths available as option)

WIDTHS: 96" Standard - 102" Optional

HEIGHT: 6'6" Standard - 7'6" Optional

A versatile, lightweight, Eby aluminum stock trailer is built to provide years of maintenance free service. An Eby trailer is custom built to fit your individual hauling needs - No mass production! We use only quality components and strong alloy aluminum to manufacture what may be the last trailer you'll ever buy.

CONSIDER THE FEATURES OF AN EBY ALL-ALUMINUM TRAILER

LIGHTWEIGHT

Eby stock trailers are 25-35% lighter than comparable steel trailers. Less weight means better fuel mileage or increased payload.

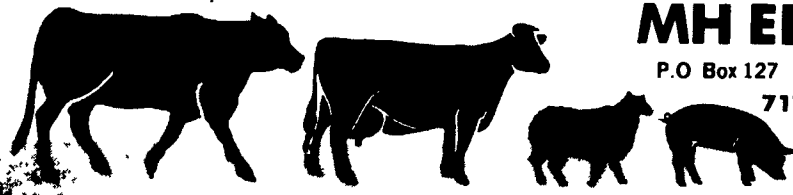
MAINTENANCE

Eby aluminum trailers won't rust. Welding and painting can cost you dollars in down time and repairs.

DURABILITY

Eby trailers are built tough. Quality components of 6061 alloy aluminum provide the ruggedness required in a livestock trailer.

For more information on the economical choice in livestock trailers, contact:



MH EBY, INC.

P.O. Box 127 Blue Ball, PA 17506

717/354-4971

INTRODUCING A NEW HEAVY DUTY FEEDTHRU SELFLOCK WITH NORBCO "DROP-PIN" QUICK RELEASE FOR DOWN COWS



FEED THRU SELFLOCKS

- FEATURING -

- Down cows immediately released by lifting pin and removing neck bar - no tools required
- Adjustable neck spaces
- Individual animals can be retained when group is released
- Rugged 2" square tubing top and bottom rail
- Steel bearing on pivoting neck bar for long wear
- Cow, heifer, and calf sizes
- Custom lengths available

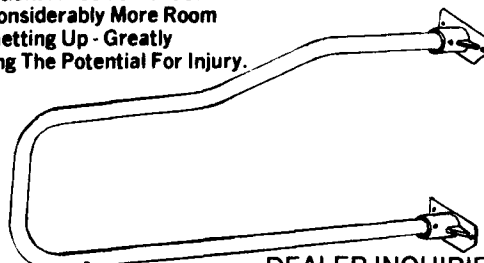
INTRODUCING A NEW GENERATION FREE STALL DESIGNED TO PROVIDE MAXIMUM COW COMFORT AND FREEDOM.

Unique Design Places Neck Rail At A Higher Level Than Possible With Conventional Free Stalls. Cows Have Considerably More Room When Getting Up - Greatly Reducing The Potential For Injury.

QUADRABEND™ FREE STALL

- FEATURING -

- Reinforced horizontal mounting brackets
- Strong high-tensile steel tubing 2 3/8" O D
- Galvanized tubing for corrosion resistance
- Available in various lengths for shorter or longer stalls



- DEALER INQUIRIES INVITED -

NORBCO EQUIPMENT

CORNER RT. 233 & SOUTH ST

P.O. BOX 267, WESTMORELAND, NY 13490

TEL. 315/736-0139 or 315/853-3936