

Public Auction Register

Closing Date Monday 5:00 P.M.
of each week's publication

MON. MAY 26 - Antique Tractors & Farm Eq. Keener Eq., Inc., 1531 Manheim Pk., Lancaster, PA. G.H. Woigemuth & B. Rentzel, Aucts.

TUES. MAY 27 - 11AM Registered & Grade 6th Annual Holstein Heifer Dispersal at Ulysses, Potter Co., PA. Bailey-View Farms, Owner. Jerry Pirrung Sales, Auct.

FRI. MAY 30 - 9AM Farm Eq. New Holland Sales Stables, Inc., New Holland, PA.

JUNE

MON. JUNE 9 - 10AM Complete Potato Farm Eq. Auction for Alger Farms, Chateaugay, Franklin Co., NY. Pirrung Aucts., Inc., 716-728-2520.

FRI. JUNE 13 - 1:30PM Public Auction of PA State Graded Feeder Pigs. Carlisle Livestock Market, Exit 12 off I-81. 717-249-4511.

Area Fairgrounds, SE of Lebanon off Rt. 72 at corner of Cornwall & Rocherty Rds. Harry Bachman, 717-867-1809 & Nelson Ebersole, 717-867-5221, Aucts.

SAT. JUNE 14 - 10AM Registered Heifer Sale. New Holland Sales Stables, Inc., New Holland, PA.

FRI. JUNE 20 - 6:30PM Feeder Pig & Feeder

Cattle. Keister's Middleburg Auction, along Rt. 522, Middleburg, PA.

FRI. JUNE 27 - 9AM Farm Eq. New Holland Sales Stables, New Holland, PA.

SAT. JUNE 28 - 11AM Horse Sale. Keister's Middleburg Auction, along Rt. 522, Middleburg, PA.

Dairy and Livestock Sales

JULY

FRI. JULY 11 - 7PM Horse Sale at New Holland Sales Stables, New Holland, PA.

Public Auction

Farm Machinery, Hay, Straw, Corn Silage
Saturday, April 12, 1986
10:00 A.M.

Located From Millersville, Pa. Go West on Letort Rd. About 2 1/2 Miles to Farm. Across from Letort Elementary School.

Terms By
Mrs. Elvin M. Hess

Auctioneers: Lloyd Kreider, AU000513L, Randal Kline, Roy Good, Gary Shirk



Public Auction

WEDNESDAY, MARCH 26, 1986
10:30 A.M.

LOCATION: Route 1, N. Annville Twp., Annville, Lebanon County, Pa. From rt. 934 in Annville go north approx. 2 miles or from 178 or rt. 22 go south on 934 approx. 4 miles to BHM Farm Equipment.

NEW & USED FARM MACHINERY

New Equipment

AC 8030 DIESEL WIDE FRONT - POWER SHIFT - AIR
AC 5015 tractor w/electric clutch and 54" mower; Ag Tech loader to fit 5020 4WD; NH 355 grinder mixer w/elec. scales; NH 791, NH 795 and NH 307 manure spreaders and Hart Carter 15' floating cutter bar for Gleaner M2.
(Note: These above items to be offered with a reserve)

Tractors & Combines

AC 190XT diesel; AC 7000 diesel; Ford 861; AC WD; AC WD45; Farmall C; Case VAC; AC model K combine w/cab and 10' platform and AC model A combine w/12' platform.

Tillage Equipment

Landall 3 pt. 10 tooth chisel plow; Midwest 15 1/2' clodbuster; AC 2, 3 & 4 bottom plows; 14' Taylor Way disc harrow; Athens 3 pt. 7 tooth chisel plow; Kewanee 18' transport disc harrow; AC 15 1/2' #2500 disc harrow; Brillion cultipacker; Oliver disc; 9' disc; AC 16 1/2' #1200 field cultivator w/harrow.

Planting & Harvesting

NH 718 harvester; NH 770 pick up head; NH 770W pickup head; Century 500 gal. sprayer w/35' boom; Century 300 gal. sprayer w/28' boom; Century 200 gal. tank w/saddles; AC 4 row 40" rolling cultivator; NH 80 bale mover; 6' King mower; Woods RM 3 pt. 500 rotary mower; IH fast hitch sickle mower; Oliver 4 row planter; White 5400 no til 4 row air planter; AC 2 row planter; David Bradley rake; NH 55 rake; NI wheel rake; NH 479 mower conditioner; JD 1209 mower conditioner; NH 401 crimper; Fox 3000 harvester w/heads; AC 50 harvester; NH 68 baler; NH 50 thrower; fertilizer spreader; 22' elevator; 15' Handler; 14' grain auger and NH flail chopper; AC 4R Corn Planter.

Misc. Equipment

Gehl 120XD grinder mixer; Hawk Bilt spreader; NH spreader; NI spreader; hay rack wagon; dump truck for parts; 2 old corn shellers; wheels and tires for Farmall M; wood saw; 3 pt. hitch blade; AC 2 row cultivator; AC 6' tine loader bucket; AC 5' dirt bucket; NH 66" bucket for skid loader; wood splitter; Tri Star wood splitter; 2 Electric 8 ton gears; Unverferth 8 ton gears; weight kit for NH skid loader; slant feeder; Danuser & Shaver 3 pt. post hole digger and wide spread for 519 or 671 spreader.

Caps; T shirts; jackets; games; boxes of new parts for old equipment; bug & fly killers; heat houser for 5050; new radiator for AC HD3 dozer; flywheel for AC G; 2 augers and tubes for unloading bins in Gleaners; Thunder Gun pressure washer; bolts; twine; 8' x 7' overhead garage door; 4' x 6' plate glass; old rocking chair; Apeco II copier; 2 Homelite & 1 AC chain saws; wire; cattle dust; new Sunbeam cattle clipper; tires; water conditioner; new AC 800# pressure washer; port. heater; light kit for 1469 haybine and other small items.

Lawn Equipment

Snow blowers; vacuum collectors; AC 210, 112 tractor mowers; MF 8 hp; Simplicity 3212 and others; snow blade for 620 or 720; Mott 5' mower; 4' Mott mower; used decks; NEW LAWN EQUIPMENT: AC 38 sweeper; AC carts; plow; 3 pt. cultivator; B&D elec. trimmer; 42" & 46" scraper blades; Dobbin sprayer and 10" ground plow w/hitch.

NOTE: This is an inventory reduction auction with a few local consignments. Financing available; Other than items listed with reserve everything will be sold to the highest bidder.

TERMS: Checks by approval of BHM
Some Items Subject To Prior Sale
Refreshments Sold By Kauffman's Church
Partial Listing

Auction for
BHM FARM EQUIPMENT
(717) 867-2211

HARRY H. BACHMAN - Auctioneer
(717) 867-1809 AU-000033-L

PUBLIC SALE

SAT., MARCH 22, 1986
10:00 A.M.

Sale located one mile from Mechanicsburg on Williams Grove Road.

Sheep

Registered Hampshire Sheep Flock with EXCELLENT Market Lambs Prospects. Successfully Shown 4-H Project.

Tractors * Truck * Farm Machinery * Hog & Misc. Equip. * Livestock

JOHN DEERE 4020 - year round cab, power shift, side console, 3123 hrs., JOHN DEERE 530 with #45 manure loader, Rubber good on both tractors. 1966 Ford grain truck with hydraulic dump, inspected and road ready. JOHN DEERE 2500 HDY/reset plow 4-18" bottoms semi-MTD; JOHN DEERE KBA disk harrow. Spring tooth harrow, 12 ft. 3 pt. hitch. A.C. air 4 row wide no till corn planter with monitor, new fertilizer and herbicide boxes. HESSTON PT7 windrower*conditioner. NEW HOLLAND 56 rake. JOHN DEERE 24T baler with J.D. 30 Bale Ejector. 2 Bale King 18 ft. hay wagons with 8 ton Zimmerman gears. 8 ft. high sides wooden hay wagon 6 ton gear. Corn workers for 530. 3 pt. hitch 4 row 100 gal. sprayer with fiberglass tank. J.D. 227 gyro mower. M.F. PTO 160 spreader. 13.9.36 tire chains for J.D. 530. 4 metal farrowing crates, 4'x8' raised nursery pen, round hog feeder, 4-hole square hog feeder, round bale hay feeder, Gallagher model #MPZ electric fence, pressure washer, 150,000 BTU portable heater, feed cart, 2 bench seats for 1971 Ford van, cattle & hog panels, cast iron water trough, 4-16 ft. alum. gates, self contained 10 ft. slide-in camper, J.D. X 4 special snowmobile, barn fan, 2,000 lb. in ground scales: 8- Hereford cross beef cows (6 ready to calf in spring 2 in summer). 1- Angus Limousin bull. 4-feeder calves, 1- Reg. Hampshire ewes age 3 to 7 (most with lambs), 1- Reg. 3 yr. old Ram, 2- purebred 3 yr. old Suffolk ewes with lambs.

MANY OTHER MISC. ITEMS TOO NUMEROUS TO MENTION!

NOTE: ALL EQUIPMENT IN GOOD WORKABLE CONDITION!

SALE ORDER: Wagon load of misc. items, machinery, livestock.

TERMS- I.D. required for bidder number. Payment in full day of sale. Cash or approved check.

*** ABSOLUTE SALE NO RAINDATE ***
*** NOT RESPONSIBLE FOR ACCIDENTS ***

Owners
HENRY & JANE WENGER
926 Williams Grove Rd.
Mechanicsburg, Pa.
717-766-5252

AUCTIONEER:
KEITH BYERS
#AU-001924-L
STEVE WENGER
#AU-001074-L

PUBLIC AUCTION OF FARM EQUIPMENT AND HOUSEHOLD ITEMS

THURSDAY, MARCH 27, 1986
At 10:00 A.M.

Follow Rt. 73 to Pleasantville, go South on Covered Bridge Rd. approx. 1/2 mile to sale. Oley Twp., Berks Co. Watch for sale arrows.

Farm Equipment

2030 J.D. Diesel Tractor Wide Front End, 2000 hrs., excellent cond.; M.F. 35; Sauder Front End Loader; 6 Front End Tractor Weights; 3 pt. J.D. Mower; 3 Bottom 16" J.D. Plow; J.D. 2 Row Corn Planter with Applicator; Ferguson 3 pt. Cultivator; Vicon 3 pt. PTO Driven Spreader; 3 pt. Blade; N.I. 36" Elevator; N.I. #323 1 Row Corn Picker; 15 Disc J.D. Grain Drill; 2 Gravity Wagons; #51 Int. Chuck Wagon; 2 Flail Wagons, 1 with hay sides; 32' Bale Elevator; #640 J.D. Side Rake; 12' Single Cultipacker; 12' Springtooth Harrow. 12' Oliver Transport Disc Harrow; Dayton Portable Generator 15,000 K.W.; N.H. 69 Hay Baler with thrower; J.D. 60 H Blower with RPM exchanger; 400 gal. Majonnier Milk Tank; 300 gal. Pull Type Weed Sprayer; Old Spring Tooth Harrow.

Ford Jack; 16 Milk Cans; 2 - 50 lb. Stainless Steel Milker Pails; Electric Calf Dehorner; 25 pieces Used Tin Roofing; Iron Fence Posts; several Wooden Pulleys; 8' Pickup Racks; several Log Chains; Hydraulic Cylinder; Full Roll 2"x4"x48" Box Wire; 1 1/2 h.p. Electric Motor; 300 gal. Fuel Tank; Double Stainless Steel Wash Tubs; Lawn Roller; some Hand Garden Tools; Bushel Crates; Hand Auger; Stewart Cow Clipper, like new; Berry Boxes; Coal and Wood Space Heater; Bag Wagon; Wooden Tub; 3 Legged Iron Butcher Kettle; 800' Old Barn Boards, several up to 2' wide; 1200 bu. Wire Corn Crib.

Household Goods & Dishes

Ivers & Pond Very Good Upright Piano; 2 Oak Washstands; 4 Burner Gas Stove for apt.; Zeigler Kerosene Space Heater; 275 gal. Tank; Old Cupboard; some Old Chairs; Wardrobe; Rope Bed; Oak Extension Table seats 12; Camel Back Trunk; Old Rocker; very nice Blanket Chest; Oak Swivel Desk Chair; 2 Iron Hog Troughs; Hay Hook; Old Auto Luggage Carrier; Fleet Arrow Sled; Small Wooden Barrel; 3 Legged Iron Butcher Kettle; 30 gal. Copper Kettle; Straw Knife; Wheat Forks.

Dishes: 5 Orange Carnival Pieces; 3 pieces Dark Carnival; Celery Dishes; Candy Dishes; Hand Painted Nippon; Butter Dish; Fostoria Cream & Sugar; 2 Jelly Dishes; Green Depression Bowls; Depression Sherbets; Ironstone Platter; other Good Pieces not mentioned; Vinegar Cruets; several 1 and 2 Gal. Crocks.

Sale Order: Small items on wagon, furniture and dishes, farm equipment.

Terms by
JACOB A. HARTZ
(215) 689-5432

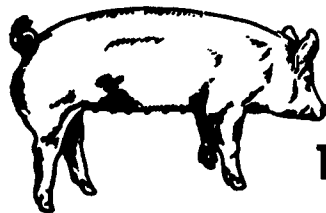
Auctioneers:
Elton Horning 00434L
Ronday Horning 002167L

TENTH ANNUAL PENNA.

FEEDER PIG SHOW & SALE

TUESDAY, APRIL 8, 1986

Sale At 7:00 P.M.
AT NEW HOLLAND SALES STABLES, INC.
New Holland, Penna.



Shown and judged in pens of six.
In following classes: 30 to 44 lb.
45 to 54 lb.
55 to 65 lb.

Trophy and \$50.00 to Champion, Trophy and \$40.00 to Reserve Champion entries. \$30.00 to each first place; \$20.00 to each second place; \$10.00 to each third place; also ribbons to first five winners in each weight group.

Show and Sale open to all pig producers. All pigs must be farrowed on farm of exhibitor. No more than two pens of winners from each weight class for one exhibitor. All pigs must be identified.

Entry fee of \$2.00 per pen to Lancaster County Swine Producers will be deducted along with regular commission charges for selling and tagging. All exhibitors will participate in .10 cent check-off program to N.P.P.C.

Sale open to all buyers. 4-H and F.F.A. members may select individuals for their projects.

Pigs received and State graded from 12:00 noon to 4:00 P.M.

Judged at 4:00 P.M. Sale at 7:00 P.M.

THIS EVENT SPONSORED JOINTLY BY THE LANCASTER COUNTY SWINE PRODUCERS ASSOC. AND NEW HOLLAND SALES STABLES, INC.