

Court of Common Pleas,
Montgomery Co., PA
Civil Div.: #83-34-04:
Hon. L.A. Brown

246 ACRE CROP FARM
Kent County, Delaware
Zoned A-R: Permits Mobile Homes
7 Mi. W. of Harrington.
Both Sides,
Rt. 271-Just S. of Rt. 275
& E. of Rt. 59

Area of Crop & Poultry Farms

AUCTION

*Subj. to Confirmation/As 2
Parcels Or Entirety*

PARCEL #1: 160 Ac. - Mostly Open Land. Approx. 3,300' Rd. Frontage. Wooded Area 2-Story Frame Residence. Equipment Shed.

PARCEL #2: 86 Ac. - Also Mostly Open Land. Approx. 3,500' Rd. Frontage.

DIRECTIONS: at Rts. 13 & 14 in Harrington: W. on Rt. 14 approx. 1-7/10 mi. to Rt. 59. Right 4-3/10 mi. to Rt. 271. Right 1 mi.: bear right to property on both sides of Rd.

SALE On Premises:

SATURDAY, April 12 at 1 P.M.

15% Deposit at Sale. Request Brochure

Louie Traiman
AUCTION COMPANY

PA License AU-950-L

Real Estate Brokers - AUCTIONEERS

1519 Spruce St. PHILADELPHIA PA 19102 (215) 545 4500
NEW JERSEY (609) 541 0095 - WASHINGTON DC (202) 642 3966

PUBLIC AUCTION

**QUALITY ANTIQUES, FURNITURE,
CHINA CABINETS, QUILTS,
RARE GEAR WT. CLOCK,
LEOPARD SHRUG, FUR
JACKETS, GLASSWARE, DISHES,
TIN TOYS, SLEIGHS, GUNS
GOOD FRIDAY,
MARCH 28, 9:30 A.M.**

New Mahoning Fire Hall, 6 Mi. W. Of Leighton, Off Rt. 443.

Antique white wicker parlor suite, wicker baby carriage, fernery, oak bow front china cabinet, flat front china cabinet, china closet secretary desk, oak tables, Bentwood clothes tree, deacon's bench, genuine German sleigh bedrm. - solid maple - complete, stuffed & wooden parlor chairs, Othello coal or wood range, modern dining set, camel & flattop trunks, 12 handmade quilts, linens, sleigh robes, reverse painted picture & others, mirrors, goose neck wall telephones & others, lamps, finger & oil lamps, collection of min. oil lamps, Red Poppy - Golden Rod dinner set, Art & Custard glass water sets, several bride's baskets, carnival punch bowl set & others, china nut sets, Art glass berry sets, crystal & pressed stemware, Bavaria - Flo Blue - Depression pcs., calendar & hand-painted plates, black & silver grey Persian lamb fur jackets, genuine Leopard fur shrug w. matching muff, jewelry, political pins, baskets, crockery, knickknacks, toys, books, bottles, cast iron stops - pots & pans, mantle clocks, rare wooden gear wt. wall clock, cookie cutters, spice set, tinware, muffin tins, 3 tined fork & knife set, locks & keys, 2 one horse sleighs, etc.

GUNS: 55 cal. sgl. barrel percussion w. M.M. Fehr lock (Civil War era), Parker dbl. barrel percussion, Newman dbl. barrel w. hammers, Remington sgl. barrel w. side hammer, G.L.C. dbl. barrel percussion, Sharpes Pepperbox, Cryin sgl. barrel percussion, etc.

Cheney Victrola (crank) w. box. PART LIST. An interesting sale.

FLOSSIE DREIBACH

Houser Aucts. AU-000445L

717-386-5631 or 2191

& 215-799-2396

PUBLIC AUCTION

**Tractors - Farm Machinery
of the late Edward C. Wierman
SATURDAY, APRIL 5th, 1986
At 10:00 A.M. "SHARP"**

Located - from square of Red Lion take Rt. 74 South apx. 3 miles just past Gohns Sunoco station turn right to Bahns Mill road first road turn left on Bethlehem Church Road farm apx. 1 mile on right (signs posted from Rt. 74 to sale) R.D. #3 Red Lion, York Co., Pa.

FORD TRACTORS

1969 FORD model 5000 diesel power steering 3 pt., 2,319 hrs. Wide front end weights new rear tires (tractor bought new) FORD 800 tractor, 5,109 hrs. new rear tires both tractors run well and ready to go.

HAY EQUIPMENT - MOWER CONDITIONER

FARM MACHINERY

1985 Woods M.D. 80 3 pt. Hook up rotary mower used very little, FORD series 535 mower - conditioner, FORD series 532 baler with FORD T 500 bale thrower, FORD series 505 3 pt. hook up rear mounted sickle bar mower like new 2 yrs. old, FORD series 309 3 pt. hook up 2 row corn planter, FORD series 130-4 bottom plow, FORD dearborn 2 bottom plow 3 pt. hook up, Lely model H P.T.O. 3 pt. hook up precision spreader, Kill Bros. #300 Grain body set up for truck or wagon unit, 3 pt. hook up Hay rack w/dull wheels, mow conveyor w/motor apx. 18 ft., new idea manure spreader, 3 pt. hook up scraper, Oliver Grain Drill 2 hay wagons used for the kick baler (Need work) Brillion cultipacker, Century 100 N sprayer, FORD 3 pt. hook up workers, small pull disk.

FARM MISC. ITEMS

2 Fence Gates, 2 Hinnman milkers, 10 pcs. ¾ plywood, round oak cook stove, very old 1 hole corn sheller, shot gun, butcher kettle, platform scales, Siegler oil stove, 10 milk cans, some tractor parts, some tools, Stihl 015 chain saw, and a few other round the farm items not listed.

Auctioneers Note: Mr. Wierman bought most of the equipment new kept it inside and well maintained and is Field Ready. If you are in the market for nice Farm Machinery, it would be in your interest to attend this sale equipment can be inspected day before sale.

Sale Order: Please be on time (No Junk) tools and misc. machinery right after, not many small items.

TERMS: Cash or Good Check. All OUT-OF-STATE BUYERS Paying by Check Must Have A BANK LETTER OF CREDIT Addressed To this Specific Auction. Full settlement day of sale. NOT RESPONSIBLE FOR ACCIDENTS.

Sale by

JESSIE K. WIERMAN

Owner

Bradley K. Smith
Auctioneer (717) 246-1770
A Complete Auction Service
Lic. #860

Public Auction

Located 6 miles east of Hagerstown, Md., on I70, North 1½ mile on Route 66 to Mt. Aetna Rd., east to 1st farm on right.

**Thursday, March 27, 1986
at 10:30 A.M.**

Tractors, Skid Loader, Combine, Machinery

Int. 1066 diesel tractor, W.F., P.S., cab, 3000 hrs.; Int. 656 diesel tractor, W.F., P.S., hydro-static, dual hydraulics, narrow front sells separately; John Deere G tractor; Case 1845 special gas skid loader; Allis Chalmers Gleaner C2 gas low profile combine w/4 row wide corn head & grain table, used on 1500 acres, New Holland 890 forage harvester w/880W grass head, remote control; JD 3800 forage harvester w/2 row corn head, grass & pickup heads, remote control; Int. 2400 round baler; Int. 1190 haybine; MC rotary scythe; JD 24T baler; Int. 8 flail chopper; Int. 13/7 disc grain drill; Int. 55 chisel plow, 3 pt. 9 ft.; Int. 550 manure spreader w/hydraulic tail gate; New Idea manure spreader w/hydraulic tail gate; Clay honey wagon; Dion 16 ft. tandem silage wagon w/roof; Int. 110 silage wagon w/roof; 2 wagons w/hay sides; Int. 56 hopper blower; Meyer 30 ft. elevator w/motor & chute; Surge portable generator, 15000 watt; Harvestore 20x90 silo; Goliath 20 ft. silo unloader; Chore Boy computer feeder w/3 feeding stalls & 80 receivers; Magnetic 4 stall feeder.

Feed & Vehicles

80 round bales of alfalfa hay, by bale; Approx. 400 sq. bales of alfalfa hay, by mow; Haylage in Harvestore; 1966 Int. R200 dump truck; GMC 5000 V6 tandem dump truck; 1975 Audi 100 LS gas 4 dr. sedan; 1975 Chev. ½ ton pickup for parts incl. good motor & drive train; Yamaha 100 trail bike; EZ Rider moped; Lime spreader truck body, needs work; pipe cattle rack for 8 ft. pickup; very few small items - come early.

(Real Estate of approx. 185 acres to be offered at 12:00 Noon)

Terms: Cash. Not responsible for accidents.

David H. Negley

Phone (301)824-3556 between 8 & 10 P.M.

Auctioneer: Robert C. Mullendore

Clerk: C.L. Metz

Lunch Rights Reserved

Public Auction

**Farm Equipment- Trucks-
Crawler Tractor
Friday, April 11, 1986
10:00 A.M.**

Located on Burkholder Rd. (Off Rt. 74 south of Red Lion, turn east on Burkholder Rd., continue 4½ mile) or 1 mile west of New Bridgeville on Burkholder Rd.

Tractor & Trucks

Allis Chalmers D17 Gas Tractor w/Power Steering, Snap Coupler, Overhauled 50 hrs. ago, 80% rubber, Front Bumper, Rear Weights. Allis Chalmers W.C. Tractor Oliver 0C6 Crawler Tractor in very good condition- Diesel and has PTO. 1972 Ford ¾ ton Pick-up. 1961 Dodge Truck for Parts. 1958 Chev. w/Grain Sides, 21000 lb. GVW & 2 Speed Rear.

Equipment

New Idea #10 1 Row Picker, Little Giant 42 ft. Elevator, 210 Bushel Gravity Bin & Wagon, Oliver 2 Row (3 pt. or Pull Type), Corn Planter, John Deere F.B. 13 Disk Drill, J.D. #5 Mower, 3 Bottom Oliver 3 pt. Plow, J.D. N. Manure Spreader, A.C. 3 Bottom Snap Coupler Plow, A.C. 60 Combine - PTO Driven, Int. 27 PTO Baler - Like New, 3 pt. Sprayer, New Idea 4 Bar Rake on Low Rubber, John Deere Killifier Disk, International Transport Off-Set Disk, 12 ft. Spring Harrow, 8 ft. Cultipacker, V Snow Plow, Cyclone Tractor Mtd. Seeder, 20 ft. Grain Auger, 2-2 Hole Corn Shellers, Platform Scales, Cattle Racks for Pick-up Truck, Gandy Attachment, Truck Hoist, 28" Tractor Chains, 12x28x13x28 Used Tractor Tires, Wheelbarrow, Fence Post, Snow Fence, New Galvanized Roofing, Old Fodder Shredder, Wagon Load of Small Items.

-OATS BY THE BIN-
HAY & STRAW BY THE HAY MAW-
TERMS: CASH OR GOOD CHECK- FULL SETTLEMENT SALE DAY.

Mrs. Earl L. Rawheiser

R.D.#1 Red Lion, Pa.

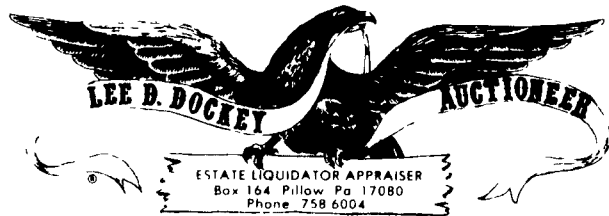
717-927-6190

AUCTIONEER: Blaine N. Rentzel

Emigsville, Pa.

717-764-6412

Lic. #761-L



**PUBLIC AUCTION
ESTATE OF ALLEN L. SCHADE
SATURDAY, MARCH 29, 1986
1:00 P.M.**

LOCATION: 1 Mile Northeast of the Borough of Pillow, Pennsylvania & Route 225. Watch for auction signs along Route 225.

REAL ESTATE

PARCEL #1: Consists of 72 ACRES, more or less, having approximately 65 acres tillable.

PARCEL #2: Consists of 17 ACRES, more or less, having thereon constructed a Completely Remodeled 2½-Story Frame Farmhouse w/Aluminum Siding...First floor contains a Modern Kitchen w/Breakfast Bar, Dining Room, Living Room & Full Bathroom w/Laundry Area...Second floor has 4 Bedrooms (2 w/closets)... Wall-to-Wall Carpet Throughout...Electric Heat...Fully Cemented Basement...2-Story Bank Barn & Misc. Out-buildings. For additional information or inspection phone 717-758-6004 or 717-365-3231. Real Estate will be offered at 1:00 P.M. individually and as a unit.

EQUIPMENT

1963 Fruehauf 38' Hog or Cattle Trailer w/Double or Triple Deck; 1959 International Twin-Screw Lime & Fertilizer Spreading Truck w/Stoltzfus 24' Boom-Type Spreader Body; 1963 T-850 Ford 10-Wheeler Dump Truck w/534 Engine & 14' Dump Box; 1961 Brown Trailer w/34' Van-Type Body & Tandem Axle.

NOTE: No small items, be on time.

TERMS: Real Estate - 10% Down. Further terms and conditions to be given day of sale. Personal Property - Cash. Personal Checks Accepted only from persons having an established account with auctioneer or approval prior to day of sale.

CHARLES R. SCHADE & CLAIR A. SCHADE,
Co-Executors

Earl Richard Etzweiler, Attorney

Auctioneers: Dockey #AU229L,

Dockey #AU1683L & Deppen #AU1957L

SAT. APR. 5 - 8:30AM
Geo. Long will sell Farm Mach., Tractors, Tools, Large Selection of Bolts, etc. Located ½ mi. off the New Berlin to Middleburg Hwy. Earl Eash, Ken Smith, Aucts.

SAT. APR. 5 - 9:30AM
New & Used Farm, Industrial, Lawn & Garden Eq. Marshall Machinery, Inc., Rt. 652, 5 mis. E. of Honesdale, PA. 717-729-7117.

SAT. APR. 5 - 12 Noon
Farm Mach. Located approx. 25 mis. NE of Harrisburg in village of Carsonville, Dauphin Co. Turn E. off Rt. 147 at Upper Dauphin Bank, approx. 1 mi. S. of Halifax, proceed approx. 10 mis. to sale. Otter Kjarbo, Owner. Dave Deibler & Ed Shoop, Aucts.

SAT. APR. 5 - Public Auction of the Manheim Community Farm Show, 5th Annual Benefit Auction. Located at the Farm Show Building, Adele Ave., Manheim. Paul E. Martin & John D. Stauffer, Aucts.

SAT. APR. 5 - Show 3PM, Sale 7PM. MD Polled Hereford Assoc. 13th Annual "Black-Eyed Susan Sale." Located Frederick Fairgrounds. Bryan Blinson, Auct.

SAT. APR. 5 - Consignment Sale of Large Eq. on the Norman Parker Farm, Jacobstown-Cookstown Rd., Wrightstown, NJ.

SAT. APR. 5 - 12 Noon Real Estate & Farm Mach. Located Wrightsville, PA, York Co., along Forge Hill Rd. near Craley, in Lower Windsor Twp. Roy E. Filmore, Jacob A. & Brian L. Gilbert, Aucts.

SAT. APR. 5 - 10AM Wakefield Lions Club 14th Annual Spring Sale. Located Rt. 272 near Powls Feed Service, Peach Bottom, PA. J. Everett Kreider, Auct.

SAT. APR. 5 - 9AM Antiques & Collectibles from the Estates of Mrs. E.G. Van Alen & Bruce E. Weirick. Location: To the rear of 168 King St., Northumberland, PA. Dockey, Dockey, & Deppen, Aucts.