

Livestock market and auction news

New Wilmington Livestock

New Wilmington, Pa.
March 17, 1986

Report supplied by PDA

CATTLE 253. Compared with last Monday's market: Slaughter cows \$1 lower. Good Slaughter Steers 50.00-53.50, one at 54.75, Standard 43.00-50.00, few Utility 41.00-43.00, Few Good Slaughter Heifers 47.00-50.25, Standard 39.00-45.00, Utility 35.00-38.00, Breaking Utility & Commercial slaughter cows 37.00-38.25, few at 39.50-40.25, Cutter & Boning Utility 34.00-38.00, Canner & Low Cutter 29.50-34.50, Shells down to 28.50...Few Yield Grade No. 1 1245-1360 lbs. slaughter bulls, 43.00-44.75. **FEEDER CATTLE:** Few Medium Frame #1 430-625 lbs. 54.00-59.00, Few 830-950 lbs. 43.00-49.00...Medium Frame #1 Heifers 310-580 lbs. 46.00-56.00, few 600-825 40.00-46.00, Holsteins 300-735 lbs. 35.00-46.50.

CALVES 337. Few Choice Vealers 87.00-96.00, Good 69.00-82.50, Standard 50.00-64.00, Standard & Good 90-125 lbs. 50.00-56.00, 65-85 lbs. 40.00-50.00, One Small Lot Utility 58 lbs. at 35.00. **FARM CALVES:** Holstein Bulls 95-135 lbs. 65.00-87.50, Holstein heifers 90-125 lbs. 60.00-77.50.

HOGS 438. Barrows & Gilts \$1 to \$1.25 lower. US No. 1-2 220-245 lbs. barrows and gilts 40.00-40.25, No. 1-3 210-250 lbs. 39.35-40.10, No. 2-3 215-255 lbs. 38.50-39.50, No. 2-4 205-270 lbs. 34.50-35.75, No. 1-3 165-200 lbs. 34.00-38.50...Sows mostly \$1 lower. US No. 1-3 305-665 lbs. sows 36.00-42.00, one at 45.00...Boars 25.00-33.50.

FEEDER PIGS 25. US No. 1-3 20-30 lbs. feeder pigs 20.00-26.00 per head, No. 1-3 40-45 lbs. 33.00-34.50

per head.

SHEEP 192. Few Choice & Prime 25-35 lbs. Spring Slaughter Lambs 108.00-110.00, 40-60 lbs. 85.00-93.00, 65-90 lbs. 75.00-86.00...Slaughter Ewes 15.00-30.00. Choice & Prime 70-120 lbs. Wool Slaughter Lambs 65.00-70.00, Couple Lots Good 80-110 lbs. at 55.00.

Eighty-Four Livestock

Eighty-Four, Pa.
Monday, Mar. 17

Report supplied by PDA

CATTLE 228...Compared with last Monday's market: Slaughter cows stront to 50 cents higher...Few Standard slaughter steers 44.50-50, Utility 38.00-42...Few Good slaughter heifers 48.50-50, few Standard 40.50-45, Utility 37.00-40...Breaking Utility & Commercial slaughter cows 36.25-39.50, one at 41.00, Cutter & Boning Utility 33.25-37, Canner & Low Cutter 29-33.50, Shells down to 20...Couple Good slaughter bullocks 49.50-52.50...Yield Grade No. 1 1250-1650 lbs. slaughter bulls 44.00-48, #2 970-1500 lbs. 39-42.70...**FEEDER CATTLE:** Medium & Large Frame #1 4-650 lbs. steers 55.00-65...Medium & Large Frame #1 380-625 lbs. heifers 50.00-55, Large #2 4-800 lbs. 36.50-45...Medium Frame #1 4-600 lbs. bulls 55-59.50.

CALVES 239...Vealers grading Good and Choice \$1-\$3 higher, Standard and Good \$3-\$5 higher...Choice vealers 91.00-103, Good 75.00-86, Standard & Good 90-120 lbs. 43.00-56, 60-85 lbs. 38.00-44, few Utility 30.00-37. **Farm Calves:** Holstein Bulls 90-125 lbs. 70.00-110.00.

HOGS 104...Barrows and gilts 50 cents-75 cents lower...US No. 1-2

230-250 lbs. 42-43.25, No. 1-3 211-245 lbs. 40.50-41.50, few No. 2-4 295 lbs. at 38.75, No. 1-3 120-190 lbs. 36.00-38...US No. 1-3 400-600 lbs. 38-39.50, No. 2-3 3-560 lbs. 36-38.50...Boars 26.00-28.00.

FEEDER PIGS 17...US No. 1-3 40-55 lbs. feeder pigs 18.00-24, lot 83 lbs. at 36.50 - all per head.

SHEEP 954...High Choice & Prime 22-40 lbs. spring lambs 120.00-133, 45-65 lbs. 92.00-107, Choice 85-115 lbs. 78.0-85; Choice 20-45 lbs. 100.00-125, 45-65 lbs. 81.00-97, 80-100 lbs. 75.00-80; Good 25-45 lbs. 95.00-105, 44-65 lbs. 75.0-94...High Choice 85-114 lbs. wool lambs 66.00-77...Slaughter ewes 20.00-28.50...**GOATS** 129: 10.00-45 per head.

Four States Livestock

Hagerstown, Md.
Wednesday, Mar. 19

Report supplied by Auction

SLAUGHTER: Fed steers, \$1 lower. Choice 52.00-55.25; good, 48.00-51.00, medium, 47.00 and down. Heifers, good, 41.00-44.00; medium, 37.00-40.00; cows, \$1 higher, individuals at 42.00. High yield, 38.00-39.75; average, 34.00-37.00; big middle, 30.00-33.00; fatty Hereford, 28.00-32.00; shelly, 30.00 and down. Fat bulls, \$1 lower. Good, 44.00-45.25, medium 40.00-43.00; Veal calves, \$2 lower; farm calves \$3 higher. Good, 66.00-74.00; medium, 58.00-65.00; Farm heifers, 52.00-68.00; farm bulls, 85.00-104.00; light calves, 43.00-48.00; weak calves, 42.00 and down. Lambs: few Easter lambs, 30-38 lbs., 107.50-137.50; good, 140 lbs. at 49.00.

STOCKER: Steers, 300-550 lbs., good run, steady prices. Choice, 63.00-68.00; good, 56.00-62.00, medium, 50.00-55.00; culls, 49.00

and down. Steers, 600-850 lbs., choice, 58.00-63.00; good, 52.00-57.00; medium 51.00 and down. Bulls, good, 53.00-59.00; medium, 46.00-52.00; Heifers, all weights, choice, 52.00-55.00; good, 46.00-51.00; medium, 40.00-45.00; Springing heifers to \$750. Pigs, by head, very active, steady prices. 20-35 lbs., 24.00-32.00; 40-60 lbs., 33.00-43.00; Shoats, by the pound, 37.00-39.00. Slaughter hogs, steady prices. 230-260 lbs., 40.25-42.00; 109-205 lbs. 36.00-38.75; 300-400 lbs., 36.50-39.00; sows, 400-675 lbs., 34.00-37.25.

Special feeder cattle sale, March 26. All cattle weighed when received and sold. 35 Hereford heifers and steers weighing 400-600 lbs.; 15 Hereford-Angus feeder steers and heifers, 1 year old; a registered Wye-Angus bull, approximately 1600 lb.; 19 head of Limousine cross heifers and steers, 400-700 lbs.

New Holland Sales Stables

New Holland Dairy
Wednesday, Mar. 19, 1986

Report supplied by auction

Reported receipts of 72 cows, 77 heifers, and 8 bulls. Market stronger.

Load of PA fresh cows, 535.00-1350.00.

Load of PA fresh cows, 560.00-900.00.

Load of PA fresh cows, 510.00-900.00.

Load of Bradford Co. fresh cows, 500.00-950.00.

Load of PA fresh cows, 510.00-740.00.

Load of 24 head all stage cows, 410.00-760.00.

Locally consigned cows 360.00-1010.00.

Purebred 750.00-1275.00.

Springing heifers 560.00-800.00. Open heifers 250.00-355.00. Bulls 450.00-585.00.

New Holland Sales Stables

New Holland Horse
Monday, Mar. 17, 1986

Report supplied by auction

Reported receipts of 251 head of horses, mules and ponies. Market: stronger.

Better Horses 535.00-650.00. Work Horses, Singles, 450.00-775.00.

Driving horses 275.00-550.00. Riding horses 225.00-515.00.

Lightweight killers 210.00-300.00. Heavyweight killers 325.00-444.00.

Mare ponies 30.00-70.00. Colts 10.00-20.00.

Gelding ponies 30.00-70.00. Larger ponies 110.00-150.00.

Jersey Shore Livestock Market, Inc.

Auction every Thursday
March 13, 1986

Jersey Shore, Pa.

Report supplied by Auction

Return to Farm Calf 60.00-101.00. Common Veal 38.00-59.00.

Choice Steers 58.00-60.50. Good Steers 54.00-57.00.

Common Steers 46.00-53.00. Commercial Cows 34.00-41.00.

Canners-Cutters 33.00-37.00. Shells 28.00-32.00.

Choice Heifers 52.00-56.50. Good Heifers 48.00-51.00.

Common Heifers 37.00-47.00. Good Feeders 48.00-53.00.

Common Feeders 30.00-47.00. Bulls 40.00-42.00.

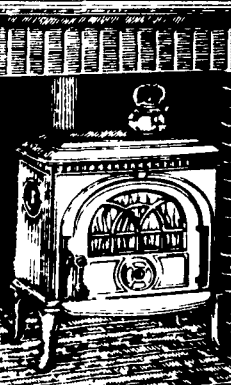
Good Hogs 43.60-44.10. Heavies 42.00-43.00.

Sows 36.00-38.00. Roughs 25.00-29.00.

Eggs 70.00-77.00.

FIELD DAY
Scheduled For
Wed., March 26th
At Robt. Webster
Farm Has Been
Postponed Till
Wed., April 2nd
Because Of Wet
Field Conditions.
(717) 687-6712

Jøtul,
a tradition
in cast iron
since 1853.

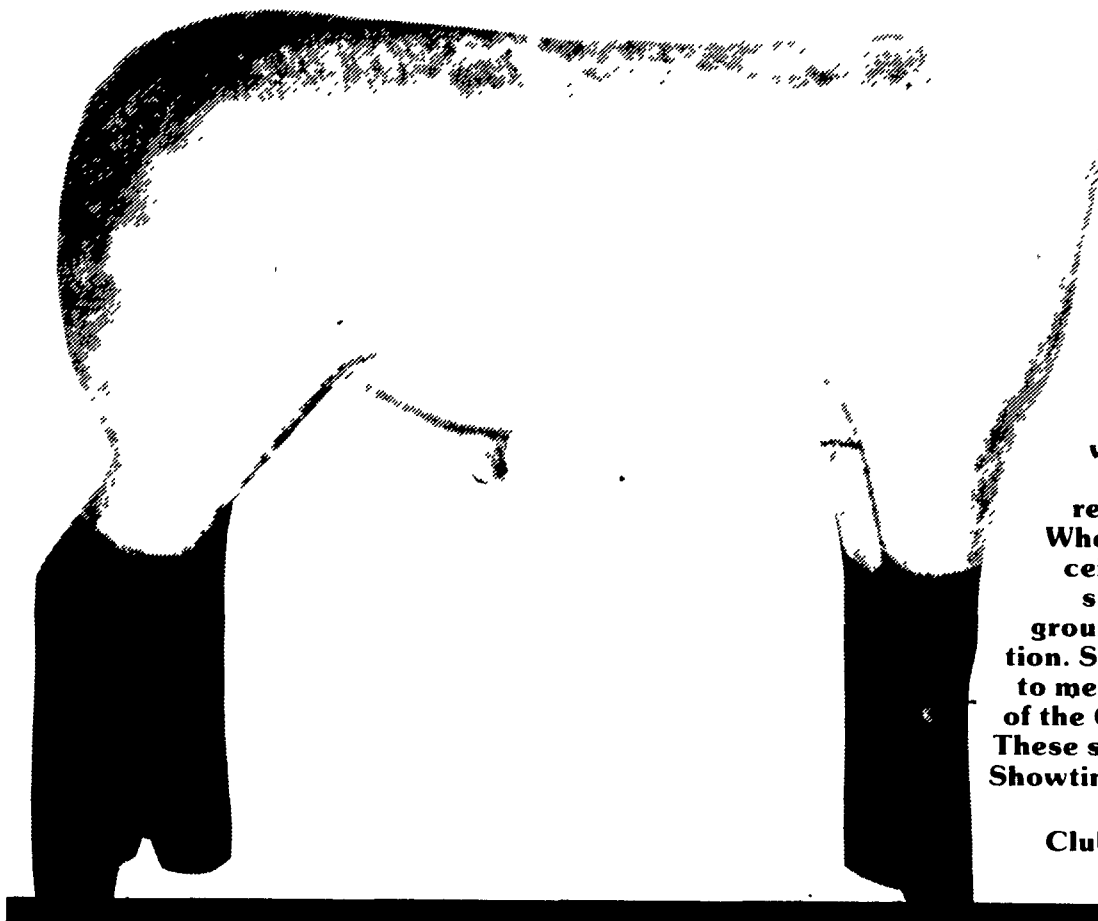


An original
Fireplace
Stove **JØTUL**

**BOWMAN'S
STOVE SHOP**
RD 3, Ephrata, PA 17522
Rt. 322, 1 Mi. East
of Ephrata
(717) 733-4973
Tues., Wed. 10-6;
Thurs., Fri. 10-8;
Sat. 10-4

TOP OF THE CLASS

Club Lambs B & B Livestock



Lambs from B & B Livestock have gone to the top of their class many times. It's time to get ready for Showtime '86. Do it right. Go with a club lamb from B & B Livestock. Guest consignors are Turtle Mead and Nix Besser. 65 market lambs. 10 registered ewe lambs. Mostly black faces but white ones, too. Auction begins at 1:00 p.m. on Saturday, April 26, Manheim Community Fairgrounds, Lancaster County. Be ready for the late summer and fall fairs. Eastern National, KILE, and Farm Show. B & B Livestock lambs have been big winners. 4-H and FFA. If your club lamb from this sale wins Grand Champion Market Lamb at the Farm Show, B & B Livestock will return the lamb's purchase price to you. Wherever you show, class winners will receive special premiums from B & B Livestock. Lambs will be penned at the fairgrounds on Friday evening for your inspection. See you on Saturday, April 26. Be ready to meet the competition head-on with a Top of the Class club lamb from B & B Livestock. These select lambs will help you get ready for Showtime '86 in a fancy way. Be ready for fun.

Club lambs. Top of the Class. April 26.

B & B Livestock, Danville, Ohio 43014 (614-599-6478) Christian Herr, Sale Manager (717-657-8147)