

Livestock market and auction news



Virginia Auction Summary

Mar. 6-Mar. 12, 1986

Report supplied by VDA - South & Southwest Va.

Receipts: 6,510.

Trend: Steady to 2.00 lower.

STEERS: Medium 1 300-500 lbs. 64.00-75.50; 500-700 lbs. 59.00-71.00; 700-1000 lbs. 48.50-58.50. Large 1 300-500 lbs. 65.00-74.50; 500-700 lbs. 58.00-69.00; 700-1000 lbs. 49.00-58.50. Small 1 300-500 lbs. 56.00-68.50; 500-700 lbs. 53.00-64.00; 700-1000 lbs. 43.00-55.50.

HEIFERS: Medium 1 300-500 lbs. 50.00-60.50, 500-700 lbs. 42.75-55.00; 700-900 lbs. 45.00-50.00. Large 1 300-500 lbs. 51.25-63.00; 500-700 lbs. 46.00-54.00; 700-900 lbs. 47.00-52.50. Small 1 300-500 lbs. 42.00-56.00; 500-700 lbs. 40.00-50.00.

Northern, Va.

Mar. 6-Mar. 12, 1986

STEERS: Medium 1 300-500 lbs. 57.50-69.50; 500-700 lbs. 55.50-67.25; 700-1000 lbs. 51.25-58.20. Large 1 300-500 lbs. 59.00-63.00; 500-700 lbs. 59.50-62.00; 700-1000 lbs. 52.75-58.75. Small 1 300-500 lbs. 55.00-66.00; 500-700 lbs. 53.00-62.25; 700-1000 lbs. 46.00-50.75.

HEIFERS: Medium 1 300-500

lbs. 47.00-57.00; 500-700 lbs. 46.00-57.50; 700-900 lbs. 42.50-50.00. Large 1 300-500 lbs. 52.50-56.50; 500-700 lbs. 46.75-51.00. Small 1 300-500 lbs. 43.00-54.00; 500-700 lbs. 42.00-49.00; 700-900 lbs. 40.50.

New Wilmington Livestock

New Wilmington, Pa.

March 10, 1986

Report supplied by PDA

CATTLE 231. Compared with last Monday's market: Slaughter cows mostly \$2 higher. Few Good slaughter steers 52.00-56.00, Standard 44.00-50.00, few Utility 39.50-42.75. Couple of Good Slaughter Heifers 50.00-50.50, few Standard 40.00-45.25, few Utility 37.00-40.00. Breaking Utility & Commercial slaughter cows 38.25-41.00, Cutter & Boning Utility 35.00-39.00, Canner & Low Cutter 30.00-35.50, Shells down to 22.50. Yield Grade No. 1 1295-2030 lbs. slaughter bulls, 42.75-49.75. FEEDER CATTLE: Medium Frame #1 570-875 lbs. steers 45.50-50.50, Medium Frame #1 540-840 heifers 38.75-46.50, Holsteins 400-785 lbs. 35.00-41.50.

CALVES 324. Couple Choice Vealers 94.00 & 99.00, few Good

70.00-80.00, few Standard 56.00-67.00, Standard & Good 90-120 lbs. 40.00-47.00, 65-85 lbs. 28.00-40.00, Utility 50-80 lbs. 13.00-25.00. FARM CALVES: Holstein Bulls 95-135 lbs. mostly 62.00-72.50, few 88.00, few down 49.00.

HOGS 301. Barrows & gilts 75 cents-1.25 higher. US No. 1-2 220-245 lbs. barrows and gilts 41.25-41.50, No. 1-3 210-255 lbs. 40.35-41.35, No. 2-3 205-260 lbs. 39.50-40.60, No. 1-3 185 lbs. at 35.00, 145 lbs. at 39.00. Sows fully steady. US No. 1-300-700 lbs. sows 38.00-43.00, few at 215-265 lbs. 34.00-38.50. Boars 25.50-27.50.

FEEDER PIGS 39. US No. 1-3 30-45 lbs. feeder pigs 24.00-36.00 per head. SHEEP 129. Spring Slaughter Lambs Choice & Prime 80-110 lbs. 70.00-85.00, 50-80 lbs. 80.00-90.00, Good & Choice Feeder Lambs 50-85 lbs. 68.00-75.00. Good & Choice Slaughter ewes 10.00-22.00.

Shenandoah Valley Livestock

Harrisonburg, Va.

Saturday, Mar. 8

Report supplied by auction FEEDER CATTLE: Trend: Steers steady to 1.00 lower, Bulls

too few, higher-mostly steady.

STEERS: M&L-1 300-500 lbs. 64.00-69.50; 500-700 lbs. 55.00-67.25; 700-1000 lbs. 52.75-58.75. S-L&M&L-2 300-500 lbs. 61.00-68.00; 500-700 lbs. 55.00-64.00.

FEEDER BULLS: M&L-1 300-500 lbs. 56.50-58.75, few 65.00-68.00; 500-700 lbs. 48.25-55.00.

HEIFERS: M&L-1 300-500 lbs. 51.00-54.50; 500-700 lbs. 47.25-54.00. S-L&M&L-2 300-500 lbs. 46.25-53.50; 51.50-52.50, few 45.25.

STOCK CALVES: Beef w/calves \$335.00; Baby Calves 40.00-100.00.

SLAUGHTER COWS: Trend. Mostly Steady. Utility & Commercial 2-4 31.25-37.75, few @ 39.00; Canner & Cutters 1-3 28.00-32.75.

SLAUGHTER BULLS: 1 & 2 41.00-45.00.

LAMBS: Trend. Blue O High Choice & Prime 69.00; Slaughter Ewes 19.50-26.50; Head Ewes 72.00.

HOGS: US 1-3 200-240 lbs. 41.00; Sows 1-3 32.50-39.00; Boars 25.00.

Morrison Cove Livestock

Martinsburg, Pa.

March 10, 1986

Report supplied by auction

CATTLE 189. Choice 56.00-58.75, High Good & Low Ch. 52.00-55.75, Good 47.50-51.50, Good & Choice holsteins 46.25-49.00, Standard 43.00-45.75, Utility 40.25-42.75. Choice sl. heifers 53.00-55.25, Good

51.00-52.75, Standard 46.00-50.25, Utility 41.75-45.50. Breaking Ut. & Commercial sl. cows 38.25-40.00, Cutter & Boning Ut. 36.50-37.75, Canner & Low Cutter 32.00-35.75, Shells down to 26.00. Choice sl.

bullocks 49.00-52.00, Good 46.00-48.50, Standard 43.00-45.75, Utility 40.25-42.50.

FEEDER CATTLE: Steers Good 51.00-58.00, Standard 42.00-48.00, Heifers Good 48.00-54.00, Standard 41.00-46.50, Bulls Good 47.00-53.00, Standard 38.00-45.00.

CALVES 307. Choice 80.50-89.00, Good 71.00-78.00, Standard 64.00-69.50, Standard & Good 90 lb. to 130 lb. 53.00-62.00, Utility 60-80 lbs. 48.00-52.00.

FARM CALVES: Holstein bulls 90-130 lbs. 83.00-108.00, Holstein heifers 90-130 lbs. 58.00-71.00.

HOGS 181. US No. 1-2 220-240 lbs. barrows and gilts 42.00-43.00, No. 1-3 200-260 lbs. 41.25-41.75, No. 2-3 180-360 lbs. 38.25-40.75, Sows US No. 1-3 350-650 lbs. sows 37.25-39.50, No. 2-3 350-650 lbs. 36.25-37.00. Boars 26.50-28.00, Light weights 30.25-33.00.

FEEDER PIGS 18. US No. 1-3 20-30 lbs. feeder pigs 16.00-24.00 per head, No. 1-3 40-60 lbs. 28.00-39.00.

SHEEP 21. High Ch. & Pr. 95 lbs. 75.00, Good 80 lbs. 58.00. Slaughter ewes 22.00-30.00. 18 GOATS \$15.00 to \$46.00 per head.

LOUIS LYONS & SON

Consign your cattle and hogs, feeder pigs & calves to Louis Lyons & Son. They offer choice service, excellent sorting & marketing of your livestock.

Charles Diller, Manager
Phone 394-7915

Burnell Siegrist - Buyer & Seller
Phone 626-8653

Experienced Personnel

Immediate Weighing

Custom Liquid Manure Hauling
3000 Gal. Tank Truck
Lancaster & York Counties

Don Groff
Holtwood, Pa.
717/284-2580

DEALERS WANTED
WHOLE COTTON SEED AND PEANUT HULLS
NAAMAN EBERLY
Paradise, PA

717-687-0990
717-299-3001

DEALERS WANTED

SPECIAL NOTICE

Gwaltney Packing Co. of Smithfield, VA.

No longer has a receiving station for hogs at

Vintage Sales Stables, Inc.

We receive hogs for auction every Sat. morning from 7 a.m. to 10:30 a.m.

Send Sows, Boars & Finished Hogs We Have Orders For 600-800 hogs.

Ever Sat.

L. Robert Frame Mgr.
Phone 717-768-8204
442-4181

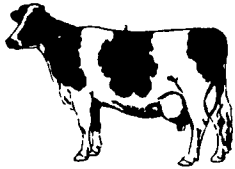
TOP PRICES
DOWN, CRIPPLED
AND AS IS
COWS, BULLS & STEERS

Slaughtered Under Federal Inspection
Paid On Dressed Weight

Tom Mulvaney
Livestock Trucking
(201) 454-4247

HANDLING:
Warren, Hunterdon, Sussex
And Somerset Counties, New Jersey

IN PENNA:
Northampton,
Bucks And
Lehigh Counties



SWINE PRODUCTION SALES AND SERVICE

Complete Feeding Programs and Services

Feeding Programs to Meet Your Individual Needs

Computerized Record Keeping System

Providing Veterinarian Service



419 W. High Street
Elizabethtown, PA
17022

Supplying Farm Fresh Feeder Pigs

Marketing and Hedging Services

Marketing of Genesis Breeding Stock

Developing Individual Financial Programs

PA. Toll Free
1-800-468-5524

Direct Dial
(717) 367-1525

ATTENTION COW CONSIGNORS

We Need Cows For Wednesday's Market. Cows Arriving By 10:00 A.M. Will Be Sold By Noon.

FEEDER PIG SALE

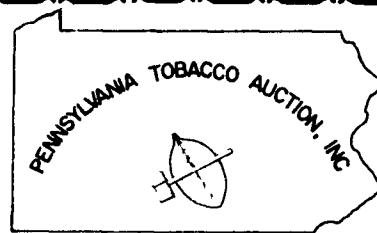
Every Tuesday, Starting at 1:00 P.M.
PLEASE NOTE: All pigs to be graded MUST BE here by 11:30 A.M.

Walter M. Dunlap and Sons

Lancaster Stockyards
Tel. (717) 397-5136

An Old Line Commission Firm Keeping Abreast With The Times

WE WORK FOR THE FARMER!



WE WORK FOR THE FARMER!

ATTENTION TOBACCO FARMERS

We Thank All Farmers And All Buyers For Supporting Our New Tobacco Marketing Method In Pennsylvania:

AUCTION!

It is our opinion that your support of the auction, and your strength in numbers to hold your Type 609 tobacco until the auction opened, brought the market prices of your Type 609 tobacco to acceptable market prices. It is our opinion that the Type 41 tobacco market prices were acceptable on TOP quality Type 41 tobacco.

It is up to you farmers to decide what to plant next year!

We feel that demand will be here for Type 609 tobacco; however, it is important to remember that demand is strongest in December and January and quality will be very important. We feel that demand will continue to exist for Type 609 largely due to lower support prices in the Burley markets. We also feel that there will continue to be a demand for local Type 41 tobacco. Quality again will be very important. Hopefully we have stimulated more demand for this type of leaf through the work of various southern buyers.

We have already begun to prepare for next years tobacco marketing season. We will do everything we can this year to create more demand in our locally grown tobacco leaf. We will also be working and supporting various publications in Lancaster Farming providing information on planting, growing, harvesting, & marketing your tobacco.

We will continue to have phone hours to answer any questions you may have on Tuesdays & Wednesdays from 1 to 5 p.m.

Please refer to auction news in Lancaster Farming for the seasons averages.

ERIC PROBST GENERAL MANAGER 717-768-7100
PO Box 57, Gordonville, PA 17529