



FARM SOLD

SHARP FAMILY HERD DISPERSAL - Mt. Holly, New Jersey

Harold, Janice Sharp & Family - Registered & High Grades

COMPLETE MILKING HERD

Bred & Open Heifer Dispersal

NIGHT SALE

NIGHT SALE

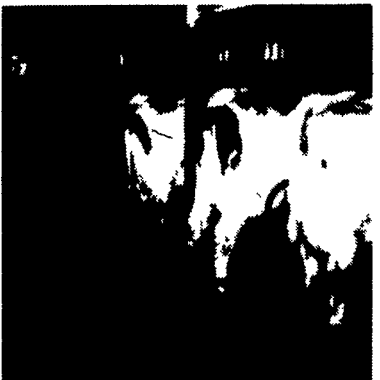
THURSDAY, MARCH 20, 1986 - 7 p.m. Sharp!

Get your milking done early. Due to such a large dispersal we must start on time.

To be held at Smoketown Quality Dairy Sales Barn, Rte. 340, Smoketown, Pa.

Average Age Of Milking Herd- 4 Yrs. 2m.

Home Bred Herd - Last 4 yrs. Avg. D.H.I.A. 18,424m. 3.7% 633F. 623 protein- Oct.-Nov. cows Avg. 65.8. March. Cows Avg. 58 lbs. Cows milking 70-100 lbs. 65 Cows - 32 are Reg. 73 Heifers - 32 are Reg. - All Calfhod VACC. Cow families with type & production. Classification - 4 - V.G. 15 - G.P. 9-G, 3-F. BAA - 100.6 New York Somatic Cell Count 124,000. - Certificate for high quality and low somatic cell count. Calving Interval 12.8 Exceptional group of strong fancy heifers raised with T.L.C.



BABY STAR

Sire- CAL-Clark Board Chairman- G.P. 83- 2 yr.-3 m V G. Mammary. Born 9-83. Due 8-11-86 to Ned Boy. Projected 18,138m. 658F. DAM- G.P. 81 Chardale Arlinda Chief Jemini. 2yr 11m. 305 21,300 3.5 752. 3yr. 228 17,481 3.6 610 Inc. 22,000. Grdam. Lifetime- 159,000 3.6 5,685- Still in Herd.

Sire Power & LAMP for 5 yrs
Herd Sires & Service Sires include:
Ned Boy- Chairman- Sexsation- Spirit- Stewart- IRA- New Hope- Bell- Jemini- VAN- Trump- Bubbler- Jet Stream- Standard- Bunky Boo- Legacy- Wiseman.

A.I. over 30 years & Holstein Breeder for 40 years. I.B.R. Nasalmone. T.B. & Bld. tested within 30 days. Plan to spend a few hours at Cowtown in Smoketown on Thursday Night, March 20, 1986.

Records of DAMS of 12 Heifers due March & April. 8 over- 20,000m - 3 over 19,000m.- 1- 25,659m
27 Heifers due April to Oct
16 Breeding Age Heifers.
30 Heifers from baby calfs to breeding age.

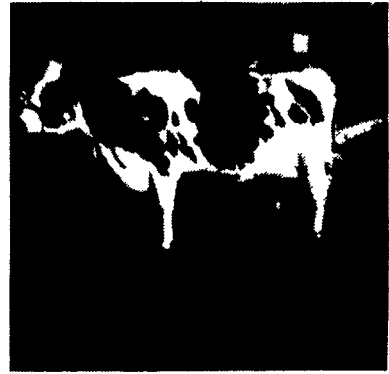
FALL Bred Herd- 7 Heifer bred to Chairman.

Bred Heifers Due	Bred Cows Due:
4 April	2-June
4 June	9-July
3 July	10-Aug
3 Sept	10 Sept
1 Oct	5-Oct

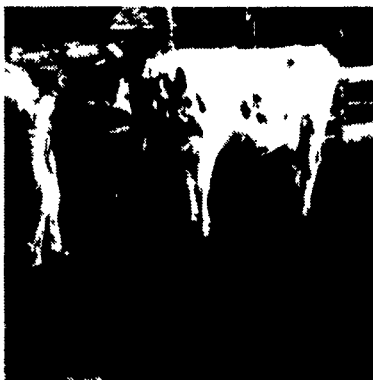


Ginger
Sire- CAL-Clark Board Chairman 2 yr. 11m. G.P. 82. G P Mammary. Born 1-19-83- Due 10-17-86 to Spirit proj 19,928-676F.
DAM- V.G. Elevation.
2-6 305 18,150m. 600F.
3-6 305 18,110m 3.4% 614F
4-7 305 19,450m. 3.8% 740F.
5-7 305 18,270m. 3.6% 654F.
6-9 305 21,240m. 3.7% 778F.
Grdam. V.G. 87- Records from 15,120 up to 20,550.

Malinda
Sire- Chardale Arlinda Chief Jemini- 4 yr. G.P. 83- V.G. Mammary.
2 yr. 7m. 305 13,670m.
4.3% 593F.
Fresh 2-9-86 1st test 61 lbs.
DAM- Sire Long Haven Imperial Knight- G.P. 83- V.G. Mammary.
1-11 305 16,520m. 3.7% 615F.
2-11 305 17,960m. 3.8% 677F.
4-0 305 21,050m. 3.9% 823F.
Grdam- V.G. 87- Lifetime 162,550m. 3.5% 5,652F.
Still in Herd.



Gwen
Sire Carlin Ivanhoe
Bell G P 80 Born 3 28 83
Bred 3 1 86 to Stewart
Proj 21 426m 780F



--MATERNAL SISTERS--

DAM- Clipper- V.G. 87.
305d. 1-11 305d. 18,160m. 602F.
3-0 305d. 23,130m. 696F.
4-4 305d. 25,190m. 833F.
5-6 305d. 26,070m. 834F.
6-7 305d. 27,280m. 834F.
8-1 305d. 24,220m. 764F.
Lifetime 144,050m. 4563F.



Gwyn
Sire Ocean View
Sexsation V.G. 87 Ex
Mammary
Born 3 16 82 298d
14 780m 3 7 547
Due 9 24 86 to Ned Boy

Get your milking done early. Due to such a large dispersal we must start on time.

Cows Milked at Regular Time
Cash or Good Check Night of Sale.
Carl Diller/Paul Snyder Auctioneers
AU00873-L
Henry Kettering - Pedigrees

Catalogs at ringside
Lunch Wagon

FOR PRIVATE SALE AT THE FARM

Purina Farmtronic Computer Feeder
4- feeding stations- 75 I D Feeder Tags
70 ft auger storage bin- 4 years old
900 gal Mueller tank- 5 or 7 horsepower complematic
compresser Stainless steel pipeline for 32 cows
Boumatic takeoff
2- Silomatic silage unloader 14 ft & 20 ft.
Clay barn cleaner with closed transmission for 72 ft -
barn

Call 1-609-235-5205

Sale Managed by
SMOKETOWN QUALITY DAIRY SALES
Gordon & Helen Fritz
717-393-0930