

Livestock market and auction news

Frederick Co.

Hay & Straw

Buckeystown, Md.

Thursday, Mar. 6, 1986

Report Supplied By Auction

97 loads. Market steady to strong on better grades, weaker to lower on lower quality; about steady on Straw.

Alfalfa, 14 loads fair to good, 80.00-130.00; 23 fair, some damaged, 47.00-79.00; Alfalfa Mix, 2 at 67.00-74.00; Timothy Hay, 9 fair to good at 70.00-92.00, 8 fair, some damaged, 60.00-68.00.

Clover Hay, 65.00-86.00 on 2 lds.; Mixed Hay, 12 fair, some damaged, 35.00-65.00; Bromegrass, 2 lds. at 50.00-69.00; Straw, 12 bright at 70.00-95.00, 4 dark at 47.00-66.00; Firewood, 5 lds. Hardwood, 56.00-70.00 cord; 1 ld. Oats, 1.95 bu.

Leinbach Farm Market

Shippensburg, Pa.

Sat. & Tues., Feb. 22&25, 1986

76 Loads Hay, 14 Straw & 3 Ear Corn.

Alfalfa 50.00-116.00, mostly 60.00-

100.00; Mixed Hay 35.00-77.00, mostly 40.00-70.00; Timothy Hay 42.00-61.00; Clover, few 48.00-80.00; Orchard Grass few 41.00-56.00; Straw 52.00-77.50; Ear Corn 70.00-85.00; Oats one load 1.85 per bu.

Dewart Livestock

Dewart, Pa.

Monday, Feb. 24

24 Loads Hay, 7 Straw & 1 Ear Corn.

Alfalfa 55.00-76.00; Mixed Hay 42.00-59.00, one load 71.00; Straw 50.00-62.00; Ear Corn 71.00.

King's Hay

Kirkwood, Pa.

Tuesday, Mar. 4, 1986

Report supplied by auction

57 loads. Alfalfa, 53.00-101.00; Alfalfa Mix, 62.00-101.00; 1 ld. at 37.00; Timothy and Timothy Mix, no grade A offered, 56.00-80.00.

Clover and Clover Mix, 61.00-74.00; Grass Hay, 30.00-49.00; Mixed Hay, 62.00-70.00; Wheat and Barley Straw, 65.00-79.00; Oat Straw at 50.00; Ear Corn, 65.00; pick-up ld. Wood, 22.00.

New Holland Sales Stables

New Holland Horse

Monday, Mar. 3, 1986

Report supplied by auction

Reported receipts of 197 head of horses, mules and ponies. Market: steady.

Driving horses 275.00-750.00. Riding horses 225.00-550.00. Few Registered 600.00-1100.00. Lightweight killers 200.00-275.00. Heavyweight killers 300.00-440.00.

Mare ponies 20.00-60.00; Colts 60.00.

Larger ponies 75.00-210.00.

Dewart Livestock

Dewart, Pa.

Monday, Mar. 3

Report Supplied by PDA

CATTLE 233...Compared with last Monday's market: Slaughter cows 50 cents to \$1 lower...Few Low Choice 1185-1400 lbs. steers 53.50-56.75, Good 48-54.25, few Choice holsteins 49-52.50, few Good 46.00-50; few Standard 42.00-

44...Few Choice heifers 53.25-55, few Good 47.25-53. Breaking Utility & Commercial slaughter cows 35-38.50, couple 39.60, Cutter & Boning Utility 34-36.75, Canner & Low Cutter 30.50-33.75, Shells down to 28...Individual Good slaughter bullock at 50.00. Few Yield Grade No. 1 980-2175 lbs. slaughter bulls 44.25-49, few #2 970-1100 lbs. 40-42.50...FEEDER CATTLE: Few Large Frame #2 450-750 lbs. steers 42.00-50...Few Medium Frame #1 375-450 lbs. heifers 51.00-54.00.

CALVES 227...Prime vealer, individual at 104.00, few Choice 80.00-96, few Good 75.00-81, Standard & Good 90-110 lbs. 56.00-64, 70-90 lbs. 50.00-57, Utility 60-80 lbs. 40.00-47.00...FARM CALVES: Holstein Bulls 90-95 lbs. 55.00-65, 100-120 lbs. 80.00-101.

HOGS 47...Barrows and gilts \$2 lower...Few lots US No. 2-3 215-245 lbs. 40.00-41.30, few lots No. 1-3 185-190 lbs. 35.75-38...Few US No. 1-3 350-550 lbs. sows 32.25-37.25...One boar at 28.50.

FEEDER PIGS 196...US No. 1-3 35-45 lbs. feeder pigs 25.50-32, 50-75 lbs. 33.50-35.00 - all per head.

SHEEP 7...Few Choice 65-70 lbs. new crop lambs 75.00-80.00.

Jersey Shore, Pa.

Thursday, February 27

Report Supplied by Auction
Return to Farm Calf 60.00-105.00.
Good Veal 70.00-85.00.
Common Veal 30.00-60.00.
Choice Steers 57.00-61.50.
Good Steers 53.00-58.00.
Common Steers 38.00-54.00.
Commercial Cows 35.00-40.50.
Canners-Cutters 33.00-37.00.
Shells 28.00-32.00.
Choice Heifers 53.00-56.00.
Good Heifers 48.00-52.00.
Common Heifers 37.00-47.00.
Good Feeders 50.00-54.00.
Common Feeders 31.00-49.00.
Bulls 40.00-50.00.
Good Hogs 39.75-41.85.
Heavies 38.00-40.00.
Sows 34.00-37.00.
Eggs 60.00-79.00.

HAY & STRAW SALE

12:00 Noon

Every Wednesday
Westend of Avondale
at the intersection of
Baltimore Pike and
Route 41.

Harvey Z. Martin
215-268-3604.
(Office)
215-445-5303
(Residence)

KING'S AUCTION

KIRKWOOD

Hay, Straw and
Grain Auction
EVERY TUESDAY

12:00

Located Rt. 472 5 miles south
of Quarryville or 6 miles north
of Oxford at Shaub's Auction
House

Lloyd H. Kreider,
Auctioneer
AU-000513L

No out of state checks
ALL TRUCKERS AND
FARMERS WELCOME

HOGS

CATTLE

FUTURES
AND
OPTIONS

COMMISSION
\$50.00

Call for information
plus our

FREE

MARKET LETTER
featuring a
Special Situation
Suggestion!

SPECIALIZING IN
COMMODITIES EXCLUSIVELY

IN PENNSYLVANIA
CALL

(800) 322-9274

ALL OTHER AREAS

(800) 523-9388

ALLENTOWN
(215) 821-8111
**Rosenthal &
Company**

2200 Hamilton Street,
Suite 102,
Allentown,
Penna. 18104

Members of All Principal
Commodities Exchanges

Green Dragon Livestock Sales



Location: Ephrata RD 4. 1
mile N. on North State St.,
Ephrata.

COWS COWS COWS SALE EVERY FRIDAY

Lots of good Northern Feeder
& Stockers. Slaughter Cows
- Bull Steer, Veal-lamb-

11:00 A.M.-Beef Sale 200-300 each week.

1:00 P.M.-Dairy Sale.

7:00 P.M.-Small Animal Sale.

For Special Sales and Herd Dispersals
on farm or at our barn or other market
information call: Office 717-733-2444,
Home 717-838-4318.

WALTER H. RISSER, Proprietor

All out of state and new buyers must have
cash or certified check or current letter of
credit from bank.

ATTENTION FARMERS

The New Way To Market Your Livestock

HATFIELD MOYER
PACKING CO. AND PACKING CO.
Will Receive Hogs Will Receive Cattle

At The

BLAIR-BEDFORD
BUYING STATION
RD 1 Martinsburg, Pa

MONDAYS - Hogs 8 AM to 11:30 AM
Cattle & Calves 8 AM to 3 PM

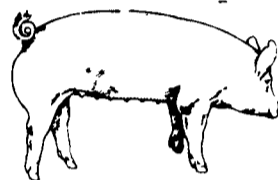
THURSDAYS - Cattle & Calves
8 AM to 3 PM

- No commission or yardage fees deducted from check
- Livestock weighed and paid for immediately
- You may call our office sale day for prices

DALE R. HOOVER - Owner

Business 814-793-3077

Residence 814-793-2657



**EMERY'S
BUYING
STATION**

**OPEN TO RECEIVE
YOUR MARKET HOGS**

**AT THE GREEN DRAGON MARKET
RD 4, EPHRATA, PA 17522
1 MILE NORTH OF EPHRATA
ON NORTH STATE STREET.**

**HOURS: MONDAY, TUESDAY, and
WEDNESDAY 6:00 A.M. to 11:30 A.M.**
215-458-5677 Residence
717-733-9648 Office

**YOU ARE PAID FOR YOUR
HOGS IMMEDIATELY**

Ken & Lois Emery, Proprietors



"WANTED" LEGHORN FOWL



NEW SANITIZED CAGE CART SYSTEMS OR COOPS

Call Richard Sechler,
Tom Feger, Nelson Legge
for quotations

PA Watts # 800-342-2249
or call collect 215-488-7617

SECHLER'S POULTRY, INC.

Box G, Strausstown, PA 19559