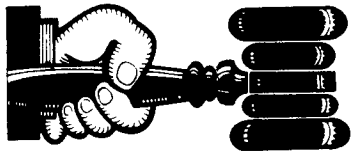


Public Auction Register

Closing Date Monday 5:00 P.M.
of each week's publication

FRI. SEPT. 19 - 9AM Farm Eq. New Holland Sales Stables, Inc., New Holland, PA.

WED. OCT. 29 - 9AM Dairy Show & Sale. New Holland Sales Stables, Inc., New Holland, PA.



AUCTIONEER'S DIRECTORY

NOVEMBER

FRI. NOV. 7 - 9AM Farm Eq. New Holland Sales Stables, Inc., New Holland, PA.

FRI. NOV. 14 - 1:30PM PA State Graded Feeder Pigs. Carlisle Livestock Market, Exit 12 off I-81.

FRI. NOV. 21 - 6:30PM Feeder Pig & Feeder Cattle. Keister's Middleburg Auction, along Rt. 522, Middleburg, PA.

SAT. NOV. 29 - 11AM Horse Sale. Keister's Middleburg Auction, along Rt. 522, Middleburg, PA.

DECEMBER

FRI. DEC. 12 - 1:30PM PA State Graded Feeder Pigs. Carlisle Livestock Market, Exit 12 Off I-81.

PUBLIC SALE

FARM EQUIPMENT,
IRRIGATION SYSTEM
& STRAW

SATURDAY, MARCH 15, 1986

At 10 AM

Located approx. 2 mile northwest of Lewisburg. From Lewisburg follow Rt. 15 north about 2 mile to John Kelly Rd. turn west to first farm on left. Union Co., Pa. Watch for sale signs.

FARM EQUIPMENT

Tractors: 806 Int. diesel, Massey Ferguson 175, 140 Int. with cultivator, side mower and Fertilizer attach, all tractors have wide front ends.

Irrigation system:

6" Marlo pump P.T.O. operated, 36 Rain Bird Sprinklers, approx. 1100' of 4" pipe 30' length, approx. 900' of 5" pipe 30' length, also elbows tees and other fittings.

12' - I.H. transport disc. harrow, IH 700-5 bottom 16" plow, 12' Brillion Cultimulcher, 12' spring tooth harrow, 770 NH forage harvester corn and pickup heads, BHB Fox blower, Kools recutter, 461 N.H. haybine, 56 N.H. side rake, 32' New Idea elevator, Meyers 500 gal. sprayer mtd. on 6x6 army truck 5 ton cap., Woods rotary mower, 6' 3 pt. blade, 351 Grinder mixer.

Tomato Equip.

2 Masser tomato Harvestors, both tractor drawn, 3 row Holland tomato planter.

Truck Trailers for Tomato Hauling:

1 trailer 22', 1 trailer 25', 1 trailer 30', 2 trailers 36' and 2 trailers 40', sides 36" to 40".

5 ton cap. dump wagon used for tomato hauling.

Wagons: Papec forage wagon, Kasten forage wagon, Lamco forage wagon, Grove 8 ton wagon, E Z trail 8 ton wagon, 4 N.H. wagons 5 ton cap., 180 bu. gravity wagon.

Ford dump truck 16' bed 4' sides 360 V8 engine, 1973 Ford 700 with 18' dump bed, 8 truck tires and wheels 8 1/4x20, 3 pt. cement mixer, locust posts, steel posts, approx. 20 ton oats straw, catch gate for cattle, also misc. items on wagon, Owner retiring.

Lunch Available

Terms by:

MAST & MABEL STOLTZUS

Tele. 717-524-2745

AUCTIONEERS:

Elton Horning AU000434L

Rodney Horning AU002167L

PUBLIC SALE

**Cattle, Farm Machinery
& Household Goods**
SATURDAY, MARCH 15, 1986
Beginning at 10:00 A.M.

Having sold our farm and discontinuing farming we will sell on our premises along Woodville Road just north of Plane #4, between Mt. Airy & New Market, Frederick County, Maryland.

14 Head of Young Cattle

Hereford, Hereford & Holstein cross heifers and steers TB & Bangs tested within 30 days of sale

Farm Machinery

John Deere 30-20 diesel tractor W/N.F. & a wide front to be sold separately, Farmall M tractor, J.D. #55 S.P. combine W/12' grain head & two row corn head & clover seed attachment, J.D. #494-A four row corn planter, like new; N.H. #271 kicker baler, J.D. cylinder S.T. harrow, N.H. #256 rake J.D. 7x17 Hyd. lift grain drill, A.C. 16' transport disc, 10' Ferguson S.T harrow, J.D. #6 chopper W/grass & corn head, J.D. #12 chopper, three kicker bale wagons, Athens 8' chisel plow, N.H. table blower, N.H. #27 hopper blower, J.D. #237 two row MTD corn picker, front MTD. circular saw for H or M, 1941 CHEV. 4 DR. - No Title; Sev. 825x20 - 10 ply truck tires & wheels, 110 & 300 Gal. fuel tanks, one w/pump; Sev. Hyd cylinders, N.H. #77 baler for parts, some junk machinery, new & used lumber 2x10, 2x6, 2x8, 1x8 & others; Approx. 100 round & split locust posts, Roto-Tiller, Sev. drag plows, hay fork & rope & pulleys, wagon tongues, lot harness, single & dbl trees, 120 lb pressure grease gun, some cement & cinder blocks, some auto parts, tap & die socket set, rotary lawn mower, Sm tools & other items

Household Goods

Frigidaire Auto. washer & dryer, both good, Signature copertone Refr., good; stereo, breakfast set, kerosene & elect heaters, D H sewing mch., Sev. antique dressers, glass & china, some old; jars, box lots, many unlisted items of household.

TERMS: Cash or approved check on day of sale. Nothing to be removed until settled for. Not responsible for accidents on the premises.

MR. & MRS. ALBERT RUNKLES

PH 829-1230

AUSTIN BOHN, Auctioneer

Ph. 775-7607

LESLIE HUTZELL, Clerk

(Lunch by Marvin Chapel Church)

NOTICE

To assure that your Public Sale appears in the Public Sale Section we must have your advertisement by 4 P.M. Tuesday of each week's publication

**DEALER IN ALL KINDS
OF LIVESTOCK**

Also Crippled & Down Cattle

MARLIN S. IRWIN

Quarryville, PA
PH: 717-786-3016

General Auctioneers - Specializing in Liquidation of Personal Property, Equipment, Antiques, Real Estate

Reist
Auctioneers

Alfred G. Reist
1050 Eden Road
Lancaster,
PA 17601

Licensed • Bonded
Lancaster 717-569-2079
Evenings/Lititz
717-627-8008

FRI. SEPT. 19 - 6:30PM Feeder Pig & Feeder Cattle Sale. Keister's Middleburg Auction, along Rt. 522, Middleburg, PA.

SAT. SEPT. 27 - 11AM Horse Sale. Keister's Middleburg, Auction, along Rt. 522, Middleburg, PA.

SAT. SEPT. 27 - 10AM Fall Heifer Sale. New Holland Sales Stables, Inc., New Holland, PA.

SUN. SEPT. 28 - 2PM Colonial World Class Sale '86. Location: Eastern National, MD State Fairgrounds, Timonium, MD. Sponsored by: Colonial Charolais Assoc. Managed by: Buzz Garey, Garey Cattle Sales.

OCTOBER

SAT. OCT. 4 - MD Polled Hereford Assoc. Red, White, Blue Sale Plus Club Calf Sale. At the Frederick Fairgrounds, Frederick, MD.

FRI. OCT. 10 - 1:30PM PA State Graded Feeder Pigs. Carlisle Livestock Market, Exit 12 off I-81.

FRI. OCT. 17 - 6:30PM Feeder Pig & Feeder Cattle Sale. Keister's Middleburg, Auction, along Rt. 522, Middleburg, PA.

SAT. OCT. 25 - 11AM Horse Sale. Keister's Middleburg Auction, along Rt. 522, Middleburg, PA.

**WOLGEMUTH
AUCTIONEERS**

R D #2 Manheim Pa

COMPLETE
AUCTION SERVICE

CH
PH 717 665 5664
BOB
PH 717 665 6684
DENNIS
PH 717 627 0571

PROFESSIONAL **Auctioneering**

PAUL E. MARTIN
R.D. 1, Box 553
Stevens, Pa. 17578

JOHN D. STAUFFER
217 Andrea Dr.
Lititz, Pa 17543

Complete Auction Service We assist you and advise you from the planning stages of your auction to the completion of your auction

For A Consultation In Your Home Call
Paul (717) 733 3511 - John (717) 665 5099
Licensed and Bonded

KLINE & KREIDER AUCTIONEERS

COMPLETE PROFESSIONAL AUCTION SERVICE
REAL ESTATE — FARMS & RESIDENTIAL
PERSONAL PROPERTY — ANTIQUES —
FARM STOCK SALES — LIQUIDATIONS

RANDAL V. KLINE
AUCTIONEER REALTOR
717 733 1006
717 569 8701

LLOYD H. KREIDER
AUCTIONEER
717 786 3394

ROY E. GOOD, JR.
RD 1 BOX 151 A
DENVER PA 17517
215 445 4309

**ANGUS SINCE 1932!
OATLAND FARM COW HERD
DISPERSION**

Saturday, March 15, 1986

11 A.M.

At The Farm Near Olney, MD

Selling: 150 Head

6 Herd Bulls • 5 Service-Age Bulls

100 Females with spring calves at side or heavy in calf



Gordie Keys

The Oatland cow herd will have calves at side by, or be close to calving by these six nationally recognized sires:

High Voltage
Pine Drive Big Sky
Dr. Spock
Wrangler

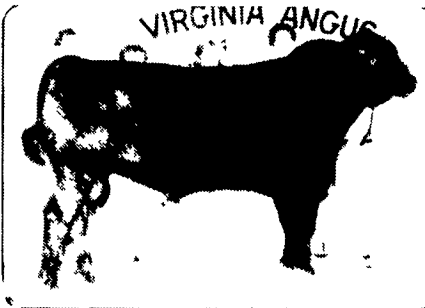
Premier Independence
Premier Celebration

Featuring many of the past Oatland champions, as well as the dams of the Oatland Farm champions that made it possible for Oatland to be the Premier Breeder at the 1983, 1984 and 1985 Maryland Shows

Featuring daughters of:

Pine Drive Big Sky
Schearbrook Shoshone
PS Sasquatch • Emulation 31
Linebacker of Wye
Mr. Angus • Briarhill JJ
Contact of Wye
Continental • Skyhigh
Patriot • Prime Rate
General JJ Patton • PS Power Play
Rosebank Connection 69
Northern Programer 382
Northern Prospector 14
Walbridge Milestone
Highway Leader
Black Revolution 1334

BREEDING ANGUS CATTLE
SINCE 1932



**Shady Brook Big Drive 14R
HE SELLS!**

Featuring the get, sale and service of these great herd bulls:

Extra Tall— Grand Champion, 1983 Maryland Breeders show. Sired by Bartman out of the world record-selling Southern Tall Errol line 29E.

Shady Brook Big Drive 14R— One of Pine drive's top sons.

Voltage HK 1564— A member of the Grand Champion Carload of Bulls, 1985 Western National Stock Show.

Aggression of GU&K— Sired by Progression out of the Triple Crown Winner, Scaara.

Extension— Sired by Bartman out of Progression's dam

A SPECIAL HIGHLIGHT

This cow herd dispersion will feature the great Oatland Duchess and Oatland Elba families—two of the most powerful families in the breed today

For your free reference catalog contact
TOMBURKE/DICK BECK
Sales Managers
AMERICAN ANGUS HALL OF FAME
At The
WORLD ANGUS HEADQUARTERS
Smithville, MO 64089
(816) 532-0811

Auctioneer:
Mike Jones

GORDON C
KEYS
Box 43
Olney, MD 20832
(301) 774-4029
Larry Lipov,
Cattle Manager
(301) 774-0127



**THINKING OF HAVING AN AUCTION?
"EXPERIENCE COUNTS"**

Bernie Rell, Auctioneer, and his professional staff has sold thousands of items and has represented farmers from all over and he can solve your auction problems NOW!

CALL NOW TO SCHEDULE YOUR
SPRING AUCTION!

AUCTIONEER & REAL ESTATE BROKER
BERNARD D. RELL

R.D.#3, Box 370, Williamsport PA 17701
Phone (717) 745-7200 / (717) 398-7310

by **Rell** Auction