

PUBLIC AUCTION

**FARM MACHINERY
HORSES, MULES, HEIFERS
HAY, STRAW, CORN
TUESDAY, MARCH 25, 1986
10:00 A.M.**

Located 5 Miles South of Quarryville, Pa.
Or 7 Miles North of Oxford Along Rt. 472

TERMS BY

SARAH S. STOLTZBUS

Auctioneers Conducting Sale:

Lloyd Kreider, AU000513L,

Randal Kline, Roy Good, Gary Shirk



Kreider & Kline Auctioneers

SIXTH ANNUAL PENNA WORLD RELIEF HEIFER SALE

**GUERNSEY SALES PAVILION, LANCASTER, PA, LINCOLN HWY EAST
THURSDAY, MARCH 13, 1986**

**11 A.M.
80 HEAD**

A daughter of Sweet Haven tradition from the popular Swampy-Hollow Sugar Cow 3E91, one of the highest test cow families of the breed 5-6 yr 365 da 23,560M 5.4% 1,275F 7-0 yr 365 da 24,130M 5.2% 1,263F. A daughter sold for \$41,000 with a record of 5-5 yr 365 da 26,170M 4.9% 1,273F

A real fancy calf born in July 1985 with five generations average 4.7% test

A daughter of Sir C Valor from the 2E92 point Swampy-Hollow Elevate Charity cow who is the fourth generation Excellent 6-1 yr 365 da 25,203M 4.0% 1,008F 4 1 y; 365 da 25,310M 3.8% 952F. This is a fancy calf born in October 1985 A potential fifth generation Excellent A maternal sister sold for \$75,000 at the Genetic Advantage Sale in New York in August 1985

A Quick Shot daughter born in January 1986 from a V.G.87 point daughter of Pawnee Farm Arlinda Chief who was made as an 8-1 year old in 365 da 25,424 lb milk 3.8% test, 957 lb fat Second and third dams are both V.G.89 points with 25,453 and 23,415 lb. milk respectfully A Jet Stream dtr from a V.G.85 point dam with 28,720M 1,012F

Another Jet Stream dtr from a V.G.87 dam with 25,430M 982F.

A Marlu Basic dtr from a 19,590 lb. 2 yr old dam, and the second dam has 31,820 lb milk 4.1% test 1,306 lb. fat.

A Royal Stewart dtr from a 25,900 lb. milk dam A Millionaire Miracle dtr from a 23,708 lb dam A Holtex Chief Triune dtr from a 23,188 lb dam with 956 lb. fat.

A Vigo Starlite dtr from a 20,246 lb dam Many more daughters from dams with 20,000 lb milk & over

55 registered, 25 grades, thirty bred heifers, 12 from V.G dams, and two from Excellent 3E91 & 3E92 respectfully

Sires represented are Mil-Nor II, Design, Chief Stewart, Sexation, Valiant, Mars Tony, Wiseman, Basic, Fagin, Junge, Starlite, Very, Chairman, Oak Star, Elevate, Bell, Simon, Jet Stream, Quick Shot, and others

A registered Jersey heifer, due September 1, with 12,923 lb dam 4.3% test

SEMPER SELLING

5 units Dossor Glen Valley Starlite AI

5 units Lekker Valiant Royalty

10 units Sir Arn

2 units Betterway Matador

1 unit Paclamar Astronaut

10 units Swampy Hollow Valiant Rick

5 units Crescentmead Chief Stuart

5 units Moody Pat Troy

10 units Vigo Valiant Elvan

Semen will be sold at 11 a.m.

Cattle will be tested within 30 days of sale. Catalogs available at ringside or from Sales Manager. Donations of hay, straw, etc. gratefully accepted. A 4 ton load of nice, 3rd cutting alfalfa is coming. Gift certificates.

AUCTIONEERS-

John Umble, AU-001421-L

Atglen Pa. 215-593-5756

Lee Kuntz and Omar Stoltzfus

AU-000522 L AU-001912-L

Pedigree- Dale Hoover

Semen- Leroy Sensenig

All sale proceeds will be donated to M.C.C. - Mennonite Central Comm., Akron, Pa. to help clothe the needy and feed the hungry of the world, in the name of Christ.

Lunch by the Relief Sale Food Committee

SALES MANAGER:

Wilmer G. Kraybill

Elverson, Pa. 215-286-9576

PUBLIC AUCTION

**TUESDAY, MARCH 25, 1986
10:30 A.M.**

LOCATION: Route 1 Annville, S. Annville Twp., Lebanon County, Pa. From rt. 322 east of Campbelltown proceed appx. 1/2 mi. on right or from rt. 72 at Due tin go west route 322 appx. 5 miles to farm. on left before Campbelltown.

* 140 HEAD HI GRADE* HOLSTEIN CATTLE

Selling Appx.

95 milk cows 15 dry

15 bred heifers 15 calves & 15 heifers

This is a milking parlor herd with cattle in various stages of lactation. Watch future issues for more complete information.

Auction for
DOL MAR DAIRY
(717) 838-5671

HARRY H. BACHMAN - Auctioneer
(717) 867-1809 AU-000033-L
Dale Hoover - Announcements
(717) 867-2489

PUBLIC FARM AUCTION

SATURDAY, MARCH 22, 1986

Commencing At 9:00 A.M.

Located 1 1/2 Miles West of Lewisburg,
PA, Along Route 45.

FARM EQUIPMENT

"460" Farmall Tractor; "460" Farmall Tractor, Wide Front; "C" Farmall Tractor, Good rubber; Cultivator to fit "C"; 2 Row Mounted Corn Planter To Fit "C"; No. 311 14" McCormick Fast Hitch Plow With Jointers; No. 311 14" Fast Hitch Plow With Colters; No. 76 McCormick Combine; 12' Spike Tooth Harrow; 9' New Idea Haybine; No. 36 7' New Holland Flail Chopper, Like New; 12' Dunham Cultipacker; 10' Pittsburgh Transport Disk; No. 268 New Holland Hay Baler; New Idea Wheel Hay Rake; No. 323 New Idea 1 Row Corn Picker; 26' 6" Auger With Motor; 32' Farmac Elevator With Motor; 16 Tube Oliver-Superior Single Disc Grain Drill; John Deere Hay Tedder-Fluffer; No. 100 Tractor Trailer Wagon With Grain Box and Sideboard, Dump Box; Oliver Wide Track Wagon With Flat Bed; New Idea Wagon With Flat Bed and Box; No. 2001 International Manure Loader; 6' Snow Scoop to Fit Loader; New Idea pto Manure Spreader; Fast Hitch Manure Blade; No. 401 12' Spring Tooth Harrow; 7' International Fast Hitch Grass Mower; Century 2 Barrel Sprayer, New Pump; Walking Plow.

FARM RELATED ITEMS

Platform Scales, Beam Scales, 2 Small Rope & Tackles; Hog Loading Chute on Wheels; Automatic Cattle Oilier; Titan Electric Milk House Heater; 2 Hole Corn Sheller With Motor; Several Metal Grain Chutes; 3-4 Hole Hog Feeders; Electric Fencer; 2 Feed Carts; Bag Truck; 1 Ton Feed Box; Heat Houser To Fit "460"; Wooden Tool Cabinet; Cast Iron Hog Trough; Log Chains; Tractor Chains; Cow Chains; Cow Kickers; Bull Leading Staff; 36' New Aluminum Extension Ladder; Milk Cans; Some Lumber, New & Used; All Size Galvanized Pipe & Fittings; 1 Bushel Size Grass Seeder With Motor; 3 Hot Beds With Sash; Range Shelter; Electric Chick Incubator; Chicken Feeders; Chicken Crates; Potato Crates; Pile of Flagstones; Stewart Electric Cattle Clippers; Electric cattle Dehornor

BUTCHERING EQUIPMENT

Scalding Trough; 3 Sets Hog Hangers; Chains; Iron Kettle; Kettle Hooks; Hog Scrappers; Portable Kettle Furnace; 3 Foot; Sausage Stuffer; 2 Meat Benches, 1 Folding; Wooden Butcher Tubs.

GRAIN

Approx. 200 Bushels Ogle Seed Oats, 1 Year Certified.

LIVESTOCK

25 Head of Feeder Cattle (Hereford, Charolais and Mixed Breeds) Weighing 400-1,000 lbs.

Owners: **MR. & MRS.
ALBERT SLEAR**

TERMS: Cash, No out of state checks.
Auctioneers: Wayne M. Hess
AU-000411-L
Alan W. Hess AU-002243-L
(717) 922-1206

HOUVALL FARMS

**15th YOPKSHIRE & YORK-HAMP.
PRODUCTION SALE**

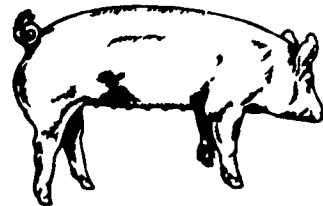
**NOTE: DATE CHANGED
MARCH 21, 1986**

SALE - 1:00 P.M.

LOCATION: Lebanon Area Fairgrounds, Evergreen Road and Cornwall Road, Rocherty Road East off of Route 72, Lebanon, Pa.

Basics never went out of style: with our herd priorities on Health, Production, Soundness, Mothering Ability, and Rate of Gain. These are the basic keys to a purebred and commercial hog man's profits. When it comes to Raising Pigs - Yorkshires Wrote the Book!

YORKSHIRES



Our pen of 4 Boars at Penn State Test Station averaged 2.21 lbs daily gain. 73 Back fat, 4.66 Loin eye, 62.33% Lean cuts, score of 2 on soundness & underline 112 Index. These pigs were sired by Dallas from the 1983 Type conference.

**60 BRED GILTS--Yorkshires Bred to York & Hamp. Boars
also York-Hamp. Crosses Bred to York Boars**

25 OPEN GILTS

20 BOARS--4 of these Boars will be Pure Hamp. Boars

All animals will be bled and negative to Pseudorabies and Brucellosis so they can go into any state on sale day

For Catalogue, Write to:

ELWOOD E. HOUSER

2150 QUENTIN RD., LEBANON, PA. 17042

Phone (717) 272-5798 or (717) 273-2921

THIS IS INVESTMENT DAY

**AUCTIONEER: Col. HARRY H. BACHMAN
Phone (717) 867-1809**

SWITZERLAND FARMS COMPLETE DISPERSAL

**Montour Falls, New York
TUESDAY, MARCH 11, 1986
1:00 P.M.**

Sale to be held at the farm, 4694 County Rt. 14, 1 mile south of Montour Falls, NY, follow auction arrows off Rt. 14 or State Rt. 13.

Having decided to discontinue farming will sell:

46 Grade Holsteins

This herd consists of 26 cows, 3 bred heifers, 6 open heifers and 10 started calves. Also selling is a springing Ayrshire cow. This is a spring freshening dairy with most of herd dry or stripping. Herd was on DHIA until September 85 and cows sell with records to 23,987 M. Cows are healthy but are not presently getting grain. Herd is interstate tested, innoculated for shipping fever and pregnancy checked

Farm Machinery

IHC 1086 deisel tractor with air cond. cab, 2459 hrs VG cond.; JD 2020 gas tractor with JD 143 loader with bucket, engine overhauled last July; MM 5 bottom 16 in. trip plow, semi-mt.; MJF 15 ft. mobile disc; McConnell 16 ft. drag, 3 yrs. old; White 5400 4 row 30 in No-till air planter; IHC 13 disc grain drill, fertilizer and grass seeder; NI 218 spreader, tandem wheel, end gate. T bar chain was new 18 months ago, Hesston 1010 hydrosowing mower conditioner; NH 269 hayliner baler with kicker; 2 basket wagons; running gear; NI side delivery rake; Hesston 7020 field harvester with 2 row corn head and hay pickup; Clover 3 beater self-unloading wagon with roof; Badger 3 beater self-unloading wagon; Grove self-unloading wagon; NH Superlift 26 blower, pto; 200 gal Fiberglass tank 3 pt. sprayer, like new; 18.4 - 34 J hook duals; two 18.4-38 tires; 40 ft. skeleton elevator, transport, rough; 30 old stanchions; 5 bags corn seed; red clover seed; Dual chemical; no misc items.

Produce

Approx. 200 ton corn silage treated with anhydrous ammonia 13.9% protein; approx. 1500 bales 1st cutting alfalfa mixed hay, also tested 13.9% protein.

SALE ORDER: 1. Farm Machinery - 2. Produce - 3. Cattle.

TERMS: Cash or good check day of sale. Nothing removed until settled for.

Owner
MARK SWITZER
Montour Falls, NY
607-594-2509

Harris Wilcox

HARRIS WILCOX, Inc.
Sales Managers and Auctioneers



Bergen, N.Y. 14416
Phone 716-494-1880