

Public Auction Register

Closing Date Monday 5:00 P.M.
of each week's publication

SAT. MAR. 22 - 11AM
Special Sale of Lambs & Goats. Westminster Livestock Auction, 3 mis. SW on Rt. 31.

SAT. MAR. 22 - 9AM Tri-State Farm Eq. & Misc. Consignment Sale. Located Hagerstown Fairgrounds, Hagerstown, MD. J. Rodger Wildeson & James G. Cochran, Sale Mgrs.

SAT. MAR. 22 - 10AM Real Estate, Farm Eq., Hshld., Horses. Located 1 1/2 mis. W. of Leesport. From Rt. 61N turn left onto Grange Rd. to Chestnut St., turn right to Butter Lane. Straight to property on left. Bern Twp., Berks Co., PA. Terms by: Dennis R. Mays. Horning Farm Agency, Inc. Alvin Horning, Auct.

SAT. MAR. 22 - 11AM Area of Historic Warwick Furnace Farms, St. Peter's Village & Warwick Village Conv. to Pottstown, Norco & Exton Mills. Warwick Twp., Chester Co., PA. 5 mis. W. of Rt. 100 at Bucktown. By Order Of: Fidelity Bank. Louis Traiman Auct. Co.

SAT. MAR. 22 - 10:30AM Complete Dispersal of Farm Mach. Located 1317 Baldwin Mill Rd., Jarrettsville, Fourth Election District, Harford Co., MD. Bert & Nancy Wiley, Owners. O'Neills Auction Co.

SAT. MAR. 22 - 10:30AM Old Fashioned Amish Farm Auction. Eli M. Miller Dispersal. Located Co. Rt. 27, 1/2 mi. S. of intersection of Rts. 14A and 226, approx. 5 mis. S. of Dundee, NY. Rock Stream (Schuyler Co.) NY. Pirrung Aucts., Inc.

SAT. MAR. 22 - 10AM Farm Mach. for Mr. Eayre Moore. Located Pochtown, NJ, 5 mis. E. of Elmer, NJ. Ralph D. Hughes, Auct.

SAT. MAR. 22 - 10AM Farm Eq., Trucks. Located

22 mis. E. of Frederick, MD, on I-70, 10 mis. S. of Rt. 97, turn right across from Central Union Mission, Camp Bennett sign, to last farm. Maier Farm. Robert C. Mullendore, Auct.

MON. MAR. 24 - Farm Eq. Located North Groffdale Rd., Leola, PA. M.M. Weaver & Son Owners. Paul E. Martin & John D. Stauffer, Aucts.

MON. MAR. 24 - 10AM

(Discontinuing Business)

Public Auction

Lawn & Garden Tractors
& Equipment - Parts -
Accessories - 2 Travel Trailers
3 Camping Trailers - Some
Household Items - Pony

SATURDAY, MARCH 22, 1986

Auction at 9:00 A.M.

ON THE PREMISES: Take Rt. 322 West of Ephrata to Village of Clay turn left onto Clay Road to Fairview Road turn left to Auction on left.

* Hundreds of items will be sold. Complete listing will appear in next week's issue.

If inclement weather - sale held under tent.
* Inspection Of All Items Any Time Between Hours of 8 A.M. to 4 P.M. From March 17th To Sale Time. No Out Of State Checks.

Terms by:

**OBERHOLZER'S SHARPENING
& REPAIR - CHESTER &
MARTHA OBERHOLZER**
733-8506

Auction Conducted By:
Randal V. Kline, AU-000499-L
Lloyd Kreider
Roy Good Jr., Auctioneers



Real Estate, Farm Mach. Located: S. of Circleville, OH, 2 mis. on US 23 to Tarlton Rd., then E. 6 1/2 mis. to the auction. Dale & Joann Bower, Owners. Schrader Real Estate &

Auct. Co., Inc.
TUES. MAR. 25 - 9:30AM
Annual Spring Consignment Sale at Sugar Valley Welding, Loganton, PA. Mgr., Ben Esh. Fraley Auction Co.

TUES. MAR. 25 - 7PM Carlisle Livestock Market
Special Spring Feeder
Cattle Consignment Sale. Exit 12 Off I-81, Carlisle, PA. 717-249-4511.

WOLGEMUTHS ANNUAL

CONSIGNMENT SALE

Valley Rd. off Hosler Rd., R.D. #2, Manheim, Lancaster Co., Pa.

SATURDAY, APRIL 12, 1986
9 A.M.

TRACTORS, TRUCKS, FARM EQUIP.
TOOLS, HARDWARE ETC., ETC.

Receiving equip. from March 31 to April 11, Daily 8 to 5, Sat. 3 P.M. For information call 665-5664 - 665-6684 or 627-0571.

No Goods received Sat., April 12 except by appointment. Closed Sundays, Lunch Available.

C.H. Wolgemuth, Manager
Lic. #1036

GOOD'S AUCTION

111 North Maple Ave. Leola

Hay and Straw Sales

Every Wed. At 12 o'clock noon

Farm Machinery sales first and third Wed. of each month. Feb. thru May. Further sales dates will be announced later.

Hardware and tools	9:00 o'clock
Building Material	11:30
Lawn and Garden	12:00

Followed By Machinery

No Household Goods

No Junk

No Out Of State Checks

GOODS AUCTION

111 North Maple Ave.

Leola, PA. 17540

Auction House

#000014-L

DISPERSAL SALE

OF FARM EQUIPMENT

TUESDAY, MARCH 18, 1986

Sale at 10:30 A.M.

The undersigned quitting farming will sell on the Stouffer farm located midway between Shippensburg and Chambersburg, Pa., along Musser Rd., turn southeast off Rte. 11 "north of Greenville" on Musser Rd., about one mile to sale, watch for sign on Rte. 11.

**6 Tractors - Pickup Truck
Honda 3 Wheeler**

Deutz 160 Power-Matic 4-wheel drive, 175 h.p., cab with heat and air, 1780 hours, exc cond; Int. 966 Diesel, cab with heater, 3 pt fully equipped, 2000 hrs; Int 656 Diesel, narrow front, 2 point hitch; Int 354 Diesel, 3 pt, power steering, 1610 hours; Int 84 Diesel Hydro, 3 pt, fully equipped, with Int 2250 loader with buckets, 1575 hrs; John Deere A O tractor; Int. suitcase wts.; 3 sets chains; 1978 GMC pickup with racks and hitch, 51,000 miles; Honda Big Red three-wheeler

Hay & Forage Equipment

Int 4000 gas windrower with cab, like new, Int. 46 baler with thrower; CZC rotary tedder; 500 gal. Century trailer sprayer; Hesston stack mower; New Idea wheel rake; windrow turner; Int 2 pt. 100 Dyna balance mower; N.H. 30 ft elevator; N.H. 892 harvester with 2-row adjustable head, pickup attach.; Int No 8 flail chopper; Int. 600 P.T.O. blower; Little Giant roll-way elev.; 2 J.D. 716A tandem axle forage wagons with roofs; 2 New Holland with factory built hay racks; 9 in. silo pipe.

Tillage Equip. - Spreaders - Planter

Int. 753 3-pt. vari-width 5-bottom plow; Int. 11-tooth chisel plow; M.F. 4-row 3 pt. cult.; Cobey 10 ft. packer; Int. 9A 28-blade disc; Int 12 ft. harrow; 24-tooth harrow; Int. 56 four-row planter with Gandy boxes; Hawkbilt 540 5-ton fert. spreader; Hawkbilt 357 tandem axle tank spreader; Hawkbilt 257 tank spreader; Winco 1500 P.T.O. A W generator.

Cattle Trailer - Snow Blower

Misc. Equip.

Moritz 16 ft. cattle trailer; P.T.O. dump trailer; Snow Lander 720 snow blower; 6 ft. blade; N.I. hand corn sheller; 40 ft. slum ladder; air compressor; anvil; 7 1/2 h.p. and 3 h.p. elec. motors; mineral feeder; trailer tilt table for cattle; DeLaval milker pumper; 2 feed carts; 2 wagon loads of misc. items used on the farm.

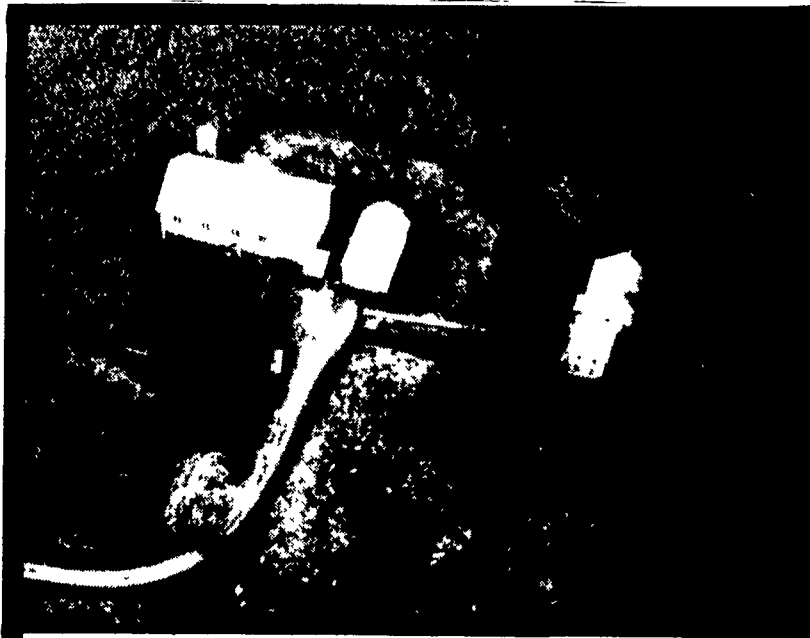
AUCTIONEER'S NOTE: For an excellent line of late model tractors and equip. don't miss this sale.

TERMS: Cash or Good Check; Identification required for bidder's no.; Lunch stand reserved.

Owners
MERION M. MOONEY & SON
365 Musser Road
Shippensburg, PA 17257

Ralph W. Horst, Auctioneer -
Marion, Pa., License No. AU-000437-L
Eberly & Gossert, Clerks

Phone: (717) 263-2398



Ralph L. Eberly Estate

PUBLIC SALE OF VALUABLE REAL ESTATE

SATURDAY, MARCH 15, 1986
2 P.M.

Location Millcreek Twp, Lebanon Co., Pa Along the Stricklerstown Road between Cocalico & Newmanstown

Directions From Schaefferstown, Pa take Rt 419 north to village of Millbach (approx 5 miles) turn right at church, go to stop sign, turn right (go approx 1/4 mi) turn left (Legislative Rt 38012) go approx 1 mi to intersection (crossroad) turn right onto Stricklerstown Road, go approx 1/4 mi to 1st farm on the right 2 miles Southwest of Newmanstown

Real Estate Property will be offered, sub-divided into two parcels and/or as one complete farm Total farm acreage is approx 119.62 acre farm w/approx 4521 road frontage approx 96 acres tillable pasture w/never failing stream 2 story sand stone 5 bay bank barn 2 story implement shed w/corn cribs and 2 2' story dwellings 6 Rooms & Bath Electric Water Hot Water Heating System E M F Coal Stoker 5 Rooms & Bath Electric Water Electric Heat First Floor Full Cement Basement & Covered Cement Porch

Offering of sub-division parcels: Parcel #1 includes approx 58.57 acres, approx 33.70 acres tillable, pasture w/never failing stream, and all the buildings Parcel #2 is approx 61.05 acres approx 60.5 acres tillable land

For more information on property phone Auctioneer (717)865 5129 or (717)272 7078

Terms 10% Down. Balance within 30 days
Not Responsible For Accidents

Auctioneers:

Clayton C. Kleinfelter & Sons,
AU-000497-L
105 Chapel St.
Lebanon, Pa. 17042

Terms & Conditions by
ORDER OF ADMINISTRATORS
PAULA A. EBERLY
(717) 949-3653
CURT W. EBERLY
(717) 949-6842
HUGH L. EBERLY
(215) 589-2011
Atty. WM. E. SCHADLER

FARM EQUIPMENT AUCTION

AT WYCO FARM EQUIPMENT

Warsaw, N.Y.

THURSDAY, MARCH 13, 1986

at 10:00 a.m.

Sale will be held at the John Deere dealership 1 1/2 mile south of Warsaw, on corner of Rt. 19 and Curtis Road.

Area farm equipment dealers have combined their resources in putting together an equipment auction we think you'll like

GOOD JOHN DEERE TRACTORS: 420, power shift; 4640 - Sharp; 4230 very good; 4620 w/cab & duals; 3020 G w/loader; 2020 D w/loader. Also IH 1086 nice; 826 hydro; 806 gas; 560 G wide front; M tractor; Cubs; (2) 656, 1 gas, 1 diesel w/chisolm ryder bean picker, 540 w/chisolm bean picker; MF 1800 articulated tractor w/cat power, good condition; MF 1085 good condition; Ford 8600, 8000, 800 w/loader MF 35 w/loader; MF 165 D rough; Trojan 164 wd wheel loader; Bobcat 632 skid loader, nice, Oliver Super 88.

EQUIPMENT: JD 8200 18x7 drill w/seeder (brand new); (2) JD 7000 6 row planters, JD 696 6 row; JD 1250 6 row; AC 4 row; IH 56 4 row, MF 468 4 row; JD FB B drill; IH #10 drill w/seeder 16x7; JD 1900 wheel harrow; JD RG 4 cultivator; JD 5500 chisel plow - 9' w/ext (new); Dunham 10' cultmulcher; Ford 2 row 3 pt cultmulcher; (2) IH 20' transp drags, IH 12' drag; Perry 12' transp disc; JD 145 5 bt plow; IH 555 5 bt. plow; JD 365 OI. 5 bt plow, McConnell 20' transp harrow; (2) IH 540 4 bt semi-mtd; Oliver 5 bt. hyd reset plow

JD 5400 self propelled chopper - very nice, NH 770 chopper w/2 row corn hd; JD 3800 forage harvester w/2 leads; Fox 2000 chopper (stored inside); JD 24 T baler; JD 14 T baler, Ford 532 w/ejc (clean); JD 346 wire baler; JD 336 baler w/ejc; NH 273 baler; (2) NH 479 haybines; NH 469, 461 haybine; Heston 1010 hydroswing; IH #8 flail; IH 990 mower/conditioner; Heston 1014 12' hydroswing; Hay tedder; Ferg. 3 pt sickle bar

A.C., Kasten, Dion S.U. wagons; Badger 3 beater w/roof; JD 45 combine; Kasten 250 spreader (new); IH 530 spreader (new), NH 518 - 676 spreaders; JD 465 tank spreader; JD 54 w/end gate; NH 23 blower; NH 23 super; NH 30 blower; JD 50 tableblower; NH 27 blower; Badger blower; Baker front end loader, 230 Amp welder; Snap on duals 24:5x32; Clamp-on duals 15.5x38; and more!

LAWN & GARDEN: JD 317 (nice); JD 200 lawn tractor w/mower; JD 216 lawn tractor w/mower; AC 716 H lawn tractor; Arien Gt 17 Hydro; Arien 5 - 14H hydro w/2 stage snowblower/mower deck; AC 310; Murrany 16 twin electric start; Cub Cadet 125 hydro; Sears 10 hp; Couplamatic Hydraulic hose machine, elec. power, sets w/attachment; and many more.

FROM MR. SZUMAGALA, ARCADE, N.Y.: IH 186 hydro; IH M w/blade; IH 300; IH 4 B plow; Ford 12' disc; (2) IH drags; JD 4 row cultivator; Older IH 4 row planter; Clean MH grain drill; Yellow devil 200 gal. sprayer; NH 477 haybine; NH 256 rake; NH 276 baler; NH 717 w/2 heads; (2) Grove s.u. wagons; (2) basket wagons; NI spreader; NH 25 blower; 20 KW pro generator; some milking equipment

NOTE: Financing is available thru JD Credit or Wyoming Co. Bank on selected items and should be arranged at least 3 days prior to auction day. See Dick at Wyco.

OPEN HOUSE: March 11 & 12 All Day.

TERMS: Cash or Good check sale day.

LUNCH AVAILABLE

Roy Teitsworth, Inc.
PROFESSIONAL AUCTIONEERS

GROVELAND P O GENESIO N Y 14454
TEL 716 243 1563