

Lancaster Co. DHIA

(Continued from Page D19)

Owner	Brd.	Age	No Cows	Days In Milk	Lbs. Milk	Lbs Fat
Bride	RH	4-2	305	21,263	37	782
Curtis & Dolly Martin	GrH	2-9	305	24,505	32	793
Garwood Farm						
Star	RH	4-8	305	21,893	36	793
Laura	RH	3-3	305	20,248	39	782
Omar Smoker						
Lorrie	RH	6-4	303	19,635	40	792
J Omar Beiler						
Lady 2	GrH	6-5	291	22,184	36	791
Glenn R Binkley						
11	GrH	4-5	305	21,697	36	791
Jane Balmer						
93	GrH	0-0	305	19,820	40	791
Jonas B Lantz						
Royal 44	RH	5-4	305	23,269	34	790
John S Nolt						
Esther	GrH	9-5	305	23,119	34	790
Spot	GrH	4-10	305	21,333	37	781
MB & Gary Stoltzfus						
69	GrH	6-3	305	19,492	41	790
Robert M Mylin						
48	GrH	7-3	305	23,820	33	788
C Nevin Hershey						
Maxine	RH	4-7	305	21,889	36	788
Christian Stoltzfus						
Brookie	RH	4-2	305	24,299	32	787
Eugene L Weiler						
Lovely	RH	4-2	305	21,449	37	787
Jonas B King						
Elva	GrH	4-10	286	22,589	35	785

(Turn to Page D21)

Maryland Grain Prices in 1985

AVERAGE 1985 MARYLAND GRAIN PRICES

JAN FEB MAR APR MAY JUN JUL AUG SEP OCT NOV DEC

	JAN	FEB	MAR	APR	MAY	JUN	JUL	AUG	SEP	OCT	NOV	DEC
NO. 2 YELLOW CORN (SHELLED)												
BALTIMORE	2.98	2.99	3.01	3.01	2.97	2.95	2.75	2.72	2.31	2.38	2.57	2.70
WESTERN MD.	2.78	2.81	2.80	2.83	2.82	2.85	2.74	2.54	2.37	2.19	2.28	2.37
CENTRAL MD.	2.72	2.81	2.80	2.82	2.86	2.88	2.83	2.74	2.51	2.24	2.32	2.52
SOUTHERN MD.	2.78	2.81	2.85	2.87	2.81	2.74	2.44	2.40	2.18	2.20	2.32	2.44
EASTERN SH.	2.78	2.92	2.95	3.02	2.96	2.92	2.74	2.53	2.35	2.28	2.41	2.59

	JAN	FEB	MAR	APR	MAY	JUN	JUL	AUG	SEP	OCT	NOV	DEC
NO. 2 YELLOW CORN (EAR)												
WESTERN MD.	2.68	2.71	2.68	2.72	2.67	2.79	2.67	2.47	2.30	2.07	2.15	2.25
CENTRAL MD.	2.61	2.67	2.69	2.60	2.63	2.65	2.65	2.54	2.20	2.21	2.32	2.45

(Prices not available for Baltimore, Southern Maryland and Eastern Shore.)

	JAN	FEB	MAR	APR	MAY	JUN	JUL	AUG	SEP	OCT	NOV	DEC
NO. 1 YELLOW SOYBEANS												
BALTIMORE	5.98	5.92	5.98	6.02	5.70	5.67	5.42	4.92	4.95	4.98	5.02	5.19
WESTERN MD.	5.81	5.79	5.86	5.93	5.66	5.67	5.21	5.01	4.92	4.81	4.79	4.95
CENTRAL MD.	5.67	5.66	5.69	5.62	5.54	5.49	5.37	4.97	4.89	4.81	4.81	4.85
SOUTHERN MD.	5.82	5.80	5.90	5.90	5.58	—	—	4.85	4.85	4.89	4.80	4.95
EASTERN SH.	5.85	5.83	5.96	6.01	5.72	5.64	5.48	5.01	4.97	4.86	4.88	5.08

	JAN	FEB	MAR	APR	MAY	JUN	JUL	AUG	SEP	OCT	NOV	DEC
NO. 2 RED WINTER WHEAT												
BALTIMORE	—	—	—	—	3.08	3.11	2.86	2.54	—	—	—	—
WESTERN MD.	3.68	3.61	3.59	3.54	3.48	3.35	2.94	2.74	2.67	2.71	2.89	2.97
CENTRAL MD.	3.30	3.38	3.38	3.49	3.39	3.25	3.05	2.77	2.77	2.85	3.12	3.42
SOUTHERN MD.	—	—	—	—	—	3.04	2.81	2.55	2.32	—	—	—
EASTERN SH.	3.05	3.05	3.04	3.00	2.98	3.02	2.83	2.64	—	—	—	—

	JAN	FEB	MAR	APR	MAY	JUN	JUL	AUG	SEP	OCT	NOV	DEC
NO. 3 BARLEY												
BALTIMORE	—	—	—	—	—	1.58	1.52	1.42	—	—	—	—
WESTERN MD.	2.50	2.49	2.51	2.47	2.40	1.83	1.70	1.66	1.60	1.54	1.53	1.58
CENTRAL MD.	2.32	2.29	2.11	2.01	2.08	1.69	1.64	1.53	1.55	1.58	1.56	1.66
SOUTHERN MD.	—	—	—	—	—	1.50	1.40	1.41	1.40	—	—	—
EASTERN SH.	1.90	1.90	1.87	1.82	1.59	1.43	1.38	1.40	1.40	1.40	1.39	1.40

	JAN	FEB	MAR	APR	MAY	JUN	JUL	AUG	SEP	OCT	NOV	DEC
NO. 2 WHITE OATS												
WESTERN MD.	2.06	2.07	2.06	2.02	1.98	1.92	1.46	1.01	1.01	.99	1.08	1.14
CENTRAL MD.	1.92	1.97	1.99	1.75	1.87	1.69	1.42	1.31	1.27	1.29	1.30	1.27

(Prices not available for Baltimore, Southern Maryland and Eastern Shore)

MARYLAND LIVESTOCK & POULTRY PRICES - 1985

BROILERS												
NEW YORK	50.57	49.84	47.16	45.06	49.25	52.00	48.48	47.98	50.72	46.83	51.95	46.60
STEERS												
1000 TO 1300 LBS.	65.06	64.90	60.82	58.60	55.53	53.60	52.22	51.03	52.90	58.13	61.53	62.40
FEEDER CATTLE, STEERS												
300-800 LBS.	62.80	61.78	69.50	69.83	70.17	65.75	58.25	58.57	61.37	59.82	59.46	59.40
CULL COWS												
HOGS	37.51	40.12	39.62	38.54	38.41	38.50	34.37	34.84	34.47	34.65	34.09	34.25
200-250 LBS.	50.55	50.84	44.56	42.15	43.00	46.81	48.46	45.12	41.84	44.82	45.01	47.70

QUALITY FENCING & SUPPLY

Distributor & Manufacturer For

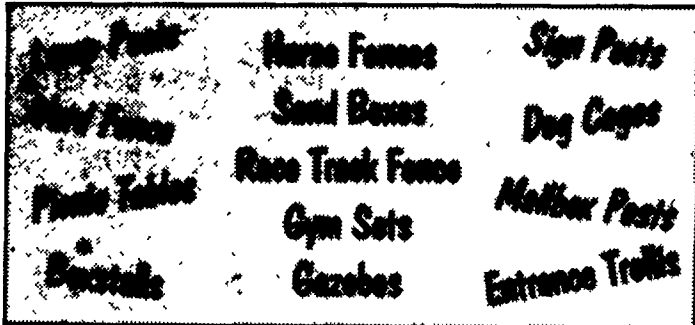
POLYVINYL P.V.C. PRODUCTS

100's Of Uses

P.V.C. RAW MATERIAL

- 2x4
- 2x6
- 2x8 T&G
- 4x4
- 5x5
- 7/8"x1 1/2"
- 7/8"x3"
- U-Channel
- Pipe
- Accessories, Etc.

P.V.C. MANUFACTURED PRODUCTS



P.S. Polyvinyl will not rot, splinter, chip, etc.

Apply To

QUALITY FENCING & SUPPLY

WHOLESALE AND RETAIL

R.D. 1, Box 428

New Holland, PA 17557

(717) 354-9760

CONSTRUCTION

SPECIALISTS IN:

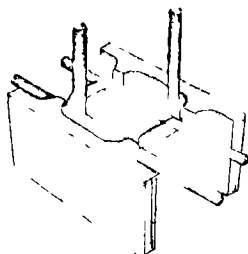
FARM BUILDINGS - EXCAVATING

MANURE PITS - SEPTIC TANKS

THE "OPEN END" IVANY BLOCK

Manure Pits with:

- POURED WALLS
- BLOCK WALLS
- LAGOON SYSTEMS
- ABOVE GROUND SYSTEMS



SPECIAL FARM PRICES

DYNAMIC MASONRY CONTRACTORS

Gordonville, PA

Mike Fisher

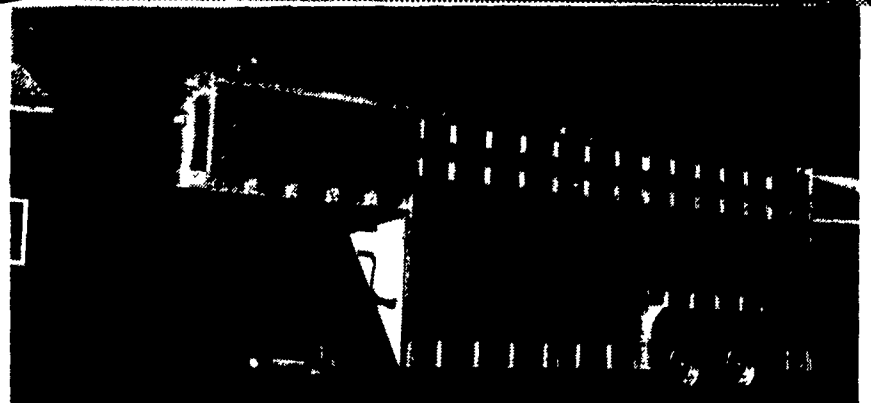
Larry Herr

(717) 687-6801

After 6 PM, Call (717) 687-7217



ALUMINUM GOOSENECK TRAILERS



ATTENTION FARMERS & LIVESTOCK HAULERS:

ALUMINUM EBY GOOSENECK TRAILERS, Standard Specifications:

LENGTHS AVAILABLE: 14' to 28' (longer lengths available as option)
 WIDTHS: 96" Standard - 102" Optional
 HEIGHT: 6'6" Standard - 7'6" Optional

A versatile, lightweight, Eby aluminum stock trailer is built to provide years of maintenance free service. An Eby trailer is custom built to fit your individual hauling needs - No mass production! We use only quality components and strong alloy aluminum to manufacture what may be the last trailer you'll ever buy.

CONSIDER THE FEATURES OF AN EBY ALL-ALUMINUM TRAILER

LIGHTWEIGHT
 Eby stock trailers are 25-35% lighter than comparable steel trailers. Less weight means better fuel mileage or increased payload.

MAINTENANCE
 Eby aluminum trailers won't rust. Welding and painting can cost you dollars in down time and repairs.

DURABILITY
 Eby trailers are built tough. Quality components of 6061 alloy aluminum provide the ruggedness required in a livestock trailer.

For more information on the economical choice in livestock trailers, contact:

MH EBY, INC.

P.O. Box 127 Blue Ball, PA 17506

717/354-4971

