

# HOUVALE FARMS

## 15th YORKSHIRE & YORK-HAMP. PRODUCTION SALE

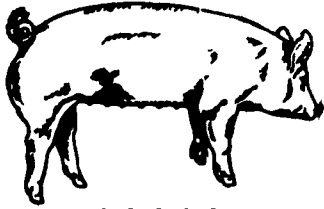
**NOTE: DATE CHANGED**  
**MARCH 21, 1986**

SALE - 1:00 P.M.

LOCATION: Lebanon Area Fairgrounds, Evergreen Road and Cornwall Road, Rocherty Road East off of Route 72, Lebanon, Pa.

Basics never went out of style: with our herd priorities on Health, Production, Soundness, Mothering Ability, and Rate of Gain. These are the basic keys to a purebred and commercial hog man's profits. When it comes to Raising Pigs - Yorkshires Wrote the Book!

### YORKSHIRES



Our pen of 4 Boars at Penn State Test Station averaged 2.21 lbs. daily gain: .73 Back fat, 4.66 Loin eye, 62.33% Lean cuts, score of 2 on soundness & underline 112 Index. These pigs were sired by Dallas from the 1983 Type conference.

**60 BRED GILTS**--Yorkshires Bred to York & Hamp. Boars also York-Hamp. Crosses Bred to York Boars

**25 OPEN GILTS**

**20 BOARS**--4 of these Boars will be Pure Hamp. Boars

All animals will be bled and negative to Pseudorabies and Brucellosis so they can go into any state on sale day.

For Catalogue, Write to:

**ELWOOD E. HOUSER**

2150 QUENTIN RD., LEBANON, PA. 17042

Phone (717) 272-5798 or (717) 273-2921

**THIS IS INVESTMENT DAY**

**AUCTIONEER: Col. HARRY H. BACHMAN**

Phone (717) 867-1809

## PUBLIC SALE

### SATURDAY, MARCH 8, 1986

11:00 Sharp

Located in Cumberland County - 3 miles South of Carlisle on Route 74.



### FEEDER CATTLE

75 head of Fancy Beef type steer calves - weighing from 500 to 800 lbs. Wormed and vaccinated. This is a nice group of cattle that have been acclimated and pre-conditioned. Angus - Black and White face - Hereford & Charlois.

### FEED

600 tons this years corn silage - sold by the ton. Some hay and straw.

### TRUCK & FARM MACHINERY

1971 Chevy 3/4 ton - C20 series: 4 wheel drive, 350 engine, runs good. Oliver 1650 diesel; narrow front, over-under shift, clean tractor.

M.F. 50 tractor: 3 pt. power steering, Souders loader, Oliver loader, N.I. loader with 7' hydraulic bucket, 10 Suitcase tractor weights, TYE no till drill, excellent condition, Trail or 3 pt. conversion, 10" spacing on discs, Hesston Stak hand 10 stacker, 3 pt. stack mover; J.D. 45 Combine: square back model, N.H. 479 haybine, N.H. 48' elevator with 5 h.p. motor, 2 Hay rack wagons; both new with 8 ton running gear and very good racks, J.D. 640 3 wheel hay rake, N.I. hay crimper, Oliver: 4-16" bottom plow, hydraulic reset, semi mounted, Utility 2 wheel trailer, 3 pt. knife nitrogen applicator, 3 knives, John Blue pump, J.D. 790 tank spreader, left hand unloader, 2-Tractor mounted 110 gal. fiberglass tanks and brackets, Several pick-up loads of firewood, Century 300 gal. truck mount sprayer, elec. controls, Gehl 930 self unloading wagon, 16' belt utility grain elevator, Woodsman 3 pt. PTO buck saw, like new, Crackall 10" roller mill with motor, N.H. 26 blower, Badger 205 manure spreader, 36' Grain auger; Gravity Bin wagon, J.D. front mount 4 row cultivators, Oliver 82 trail mower, 20' feed trough on wagon bed, 2-pickup stock racks, 28' of 8" pipe and gooseneck, Round hay bale feeder, 3 h.p. gas powered pump, Shelving; 12' and 14' planks, Nite rider bar lights; 275 gal. gas tank, 9 Telephone poles; 8/10/16' gates, Grove wagon with good flat 8 ply 15" tires, used, Some dried cherry lumber; Assorted lumber and posts, pile of old barn siding; Pile of used brick, Wagonload of small tools, Nuts, bolts and misc. items.

SALE ORDER: Misc. items, Machinery, Silage & Hay, Cattle.

Not responsible for accidents  
ID required for Bidder's No.

Sale By:



Not responsible for accidents  
ID required for Bidder's No.

R.D. 1, Landisburg, PA 17040  
Tel. (717) 789-3883

**GALEN C. BYERS, Owner**  
(717) 243-5768

SAT. MAY 10 - 10AM  
Grade Heifer Sale. New  
Holland Sales Stables,  
Inc., New Holland, PA.  
MON. MAY 26 - Antique  
Tractors & Farm Eq.  
Keener Eq., Inc., 1531  
Manheim Pk., Lancaster

PA. C.H. Wagemuth & B.  
Rentzel, Aucts.

TUES. MAY 27 - 11AM  
Registered & Grade 6th  
Annual Holstein Heifer  
Dispersal at Ulysses,  
Potter Co., PA. Bailey  
View Farms, Owner. Jerry  
Pirring Sales, Auct.

## JOHN W. & GAYLE D. EILER DISPERSAL OF MILKING HERD, BRED HEIFERS SELECTED OPEN HEIFERS FARM EQUIPMENT, TOOLS HOUSEHOLD GOODS

AT



## PUBLIC AUCTION

SATURDAY, MARCH 15, 1986

AUCTION TIME: 9:30 A.M.

LOCATION: Between Lebanon & Reading at Route 422 & 419 Junction, take Route 419 North 5 miles to Parkside Inn Rd., turn right to first farm on left. Berks County, PA.

### 71 Registered & Grade Holsteins.

48 MATURE COWS (5 Registered)

17 BRED HEIFERS (3 Registered)

6 OPEN HEIFERS (2 Registered)

A.M.-P.M. DHIA Records - Certified & Accredited 30 Day Health Charts - Eligible For Interstate Shipment Preg. Examined - Auction Held In Tent.

RHA-52.8 15,346 3.4 521

6 Due Mar -April; 19 Due May-June; 20 Due Aug.-Sep.

### Featuring: High Protein Cow in Berks Co., 1985

Hotsdale Farms Flo-Twin - Sired By Morrill BB Star Bicken

5-4 337 16,632 3.3 548 10.7 Percent Pro 1773

Grade - Hazel 7-5 309 17,738 3.4 612

Projected 19,539-639

SPECIAL MENTION: This Is A Young, Good-Uddered Herd. Most Sired By Select Sires And Sire Power Bulls And Bred To Sire Power Sires.

### DALE L. HOOVER CATTLE INFORMATION

For Catalogs Contact: DALE L. HOOVER

R4, Box 805 Lebanon, PA 17042 717-867-2489

Cows Selling At Approx. 12:30 P.M.

MASSEY FERGUSON 510 COMBINE

Gas, With 4 Row N Corn Head;

MASSEY FERGUSON 180 DIESEL

New Holland 791 Tandem Axle Spreader W/Hyd. Gate, Top Beater, 1 Yr. Old; GEHL 750 Harvester, 2 Row N Corn Head, 6 Ft. Hay Pick Up, 3 Yr. Old; GEHL Flail Chopper; BRADY 12' Field Cultivator, Pull Type; TAYLOR-WAY 12'6" Disc Harrow On Transplant; M.F. Sub Soiler; M F 3x14, Three Pt. Trip Plow; M.F. 4 Row, 3 Pt. Cultivator; M.F. 3 Pt. Grass Mower; 8'x16' Wagon W/bale Racks; 2 Flatbed Wagons; EZ Manufacturing Forage Wagon, 3 Beater W/Roof; Century Barrel Sprayer & Pump On Trailer; 20'x6" Grain Auger; David Bradley Hammermill; Spring Harrow; WINPOWER 12 KW, P T O Generator On Wheels;

APPROX 40 TON EAR CORN - 1,000 BALES 2nd CUTTING

ALFALFA & GRASS MIXED

### 1964 Ford, 12' Grain Body & Dump

1972 Jeep 4 W.D. Pickup, Needs Repair; J D 112 Lawn Tractor; Sears 10 H P Lawn Tractor; Platform Scales; chain Saw; Milk Cans; Surge Bucket Milker; Fogger; 2 Elec. Fencers; Cow Clipper; Dehorner; Barn Cleaner Parts; BUTCHER FURNACE & KETTLE; OAK HIGH BED & DRESSER; Rocking Chairs; Wicker Furniture; 2 Camel Back Trunks; Cream Separator; Elec Butter Churn; Crocks; Jugs; Sofa; Chairs; Some Misc. Dishes & Cooking Utensils

SALE ORDER: Small Items On Wagon, H.H. Goods, Farm Equip., Cows & Heifers. COME EARLY. Farm Equip. Selling In The Morning.

TERMS: cash or Good Check. All OUT-OF-STATE BUYERS Paying By Check Must Have A BANK LETTER OF CREDIT Addressed To This Specific Auction.

Auction By:

**JOHN W. & GAYLE D. EILER**  
PHONE 215-589-4200

Auction Conducted By  
J. & P. AUCTIONS

Paul E. Martin, Auct. AU-001601-L  
Ephrata, PA 717-733-3511

John D. Stauffer, Auct. AU-001509-L  
Lititz, PA 717-665-5099

FOOD BY ST JOHN HOST CHURCH

## AUCTION

SATURDAY, MARCH 8, 1986

10:30 A.M.

Rt. 28, Nokesville, Va. 7 Miles South of Manassas on left.

John Deere 830 tractor; John Deere 3020 diesel tractor, 1972 side console; 1974 International truck with 59K miles with grain body; 16' dump; John Deere 336 hay baler; John Deere 1207 hay bind; John Deere 7700 combine with 2 heads; diesel M.F. 410 combine with corn head and grain table; 2 rubber tire wagons, FAV-O-RITE granite bin wagon; John Deere 10' disk with transport with heads; 5' M.F. bush hog; John Deere 3 pt. hitch post hole digger; 5' pull type roller; Arps 6' scraper; Ford 352-354 4 row no-till planter with fertilizer hoppers; Danuser post driver; 894a John Deere side delivery rake; 16' stock trailer; John Deere 24' hay elevator; 3/4 h.p. portable air compressor; New Holland hay crimper, 7' Ford 501-7 mower with ex. knife; 717 New Holland harvester, one row; Cobey forage wagon, 10 ton.

2000 BALES OF HAY - TIMOTHY & CLOVER.

TERMS: Cash - Certified Check



526 Harrison Road  
Fredericksburg, Va. 22401

703-898-0971  
Lic. #55 - Bonded

## PUBLIC AUCTION

LIVESTOCK- MACHINERY-

SOME HOUSEHOLD

TUESDAY, MARCH 11,

AT 9:00 A.M.

Located 2 1/2 Miles N.W. Of Belleville, PA., Turn East Off Route 305 Onto East Back Mountain Road, 1 Mile To Farm.

### 4 WORK HORSES

Team smooth mouth black geldings, 4 yrs. old sorrel gelding, smooth mouth sorrel gelding, 4 sets work harness, set of driving harness, collars, lines, halters, etc., neck yokes, single trees, 2-3 and 4 horse hitchers, etc

### 22 HEAD

### DAIRY CATTLE

6 Holsteins milk cows, 3 fresh Jan. and Feb, 2 due in May, 5 bred heifers, 11 breeding age and younger heifers, 3 are red and white, home raised, T.B. and Bangs tested

### SOME ALFALFA AND MIXED HAY

Lestrelle slow speed 7 1/2 H.P. dsl. engine, Lehigh compressor, 10 can S.S. lined cooler, Rheem kerosene water heater, double S.S. tubs, 20 milk cans, 4 S.S. buckets, 2 strainers, etc

### FARM MACHINERY

Case model I. tractor on steel, N I no. 10-A spreader, M.F. no. 12 baler w/engine real good, M F rola bar rake, Grimm hay tedder, I.H. no. 9 trailer gear mower 7 ft. cut, King Wyse 24 ft elevator, hyd. drive unit and motor, J.D. wagon w/flat bed, wagon box, Papec and I.H. no. 7 silo fillers, Ontario 11 hoe grain drill, J.D. corn planter, 3 Fore trucks, Hochstetler riding plow, Wiard no. 106 plow, Taylor Way 6 ft. disk, land drag, cultipacker, wooden roller, J.D. 9 ft harrow, I.H. corn binder, I.H. 8 ft. grain binder, I.H. cultivator, utility cart, roller bearing spring wagon, one horse dump cart, 18 ft. home made elevator, Buzz wood saw, 2 wheelbarrows (1 wooden), Cyclone seed cleaner, bag wagon, 2 drive belts, 3 round hog feeders, iron trough, 4 bath tub waterers, chicken feeders and crates, handy man jack, wall drill press, acetylene torch and cart, air compressor w/engine, bench grinder w/engine, anvil, tongs, line shaft, pole vise, pole tree trimmer, cant hook, forks, shovels, odd belts, assorted bolts, misc. boxes, hand tools and misc. items.

### SOME HOUSEHOLD

Black Hawk compound bow, Recorse bow, 2 turkey callers, wall gun rack, utility cart, 2 burner oil stove, picnic table, 2 tables, set of 6 oak chairs, 2 rockers, lawn chairs, wood box, metal wardrobe, beds, S.&M., 3 dressers, misc stands, small knee hole desk, step stool, window screens, used windows, apple drier, odd jars, some dishes and misc. items

Terms- CASH

### LEROY J. AND LINDA YODER

R.D. 1, Belleville, Pa.

Mark Glick-Auctioneer  
AU-349-L

LUNCH