

PUBLIC SALE

THURSDAY, MARCH 6, 1986
10:30 AM

Located approx. 6 miles south of Carlisle, Pa. on BURNT HOUSE road. Watch for sale signs along Walnut Bottom road and along Rt. 11 at Cumberland Golf Course.

FARM MACHINERY
John Deere 3010 gas tractor, good condition; Farmall C tractor with loader and cultivators, J.D. #45 S.P. Combine, 10 ft. head; J.D. 3 16-in. bottom hyd. reset plows; J.D. K.B.A. 32 disk, disk harrow; Brillion 10 ft. cultipacker, smoothing harrow; steel drag; J.D. subsoiler; 2-row McCormick Deering corn planter; J.D. #1209 mower conditioner; J.D. #336 hay baler with ejector; J.D. #640 hay rake with front wheel
3 wooden hay rack wagons - one with New Holland - two with J.D. running gears; 2 Little Giant bin wagons with J.D. running gears; John Deere #8 field harvester with one-row corn head; J.D. #55 blower with pipe; 2 J.D. #227 corn pickers; 2 1/2 ft. Kingwise elevator; 28 ft Kingwise elevator; 10 ft. and 16 ft. aluminum elevators; drag elevators; 4 in. auger elevator; New Holland #227 manure spreader; J.D. #442 corn sheller; seed cleaner. Tractor seeder; walking plow; 2 horse weeder; litter carrier with track; circular wood saw with steel frame; feed carts; iron hog trough; milk cans; shovels; forks; tools; belts; bag wagon.

LIVESTOCK
2 purebred Nubian Goats near freshening; 4 Ewes with lambs by side; 1 Pony

MR. & MRS. RALPH GOODLING
Owners

244 Burnt House Road
Carlisle, PA 17013
717-243-4506

Auctioneer: Foreman #AU1163
(717-245-2844)
Clerks: Otto & Foreman
Lunch Stand Reserved

PUBLIC AUCTION

**FARM MACHINERY
MULES & DRIVING HORSES
FEW HOUSEHOLD ITEMS
TUESDAY, MARCH 4, 1986
10:30 A.M.**

LOCATION— From Bridgeport, go South on Lampeter Rd. Approx. 5 miles, turn left on Penn Grant Rd. to Pequea Lane. 1st farm on right.

6 Mules, 4 Red Sorrels & 2 Palomino's; Driving Horses; 8 Sets of Harness; Market Wagon Hydraulic Brakes; 3, 4, 5, 6 Horse Hitches; 4 Fore Carts.

W-9 McCormick tractor with Welder; 435 Int. Baler; 456 NH Grass Mower with engine; New Idea Crimper with VF Wisconsin Engine; 7 ft. Pequea Hay Tedder; 256 NH Rake; 5 1/2 ft. Smucker Chopper; 2 Wagons, 1 Farm Built and 1 Calhoun; Pequea 2 Way Hyd. Plow; 106 Wiard Walking Plow; Combination Harrow & Roller; JD 4 Section Harrow; 8 ft. Drag Harrow; 3 McCormick Deering Cultivators; JD Disc; 8 ft. Cultipacker; 8 ft. Packer Seeder; JD 999 Corn Planter; 323 New Idea Corn Picker; 2 JD Corn Binders, 1 with Loader, 1 Ground Driven; 2 Hole Corn Sheller; Thomas 10 Disc Grain Drill; Gandy Fertilizer Drill.

No. 10-A New Idea Manure Spreader; Wheelbarrow; 200 gal. Fied Sprayer with engine; Pa-Pec 16" Silage Cutter; New Idea Tobacco Planter; Tobacco Lath; Tobacco Ladders; Tobacco Spears; 2 Minnich Bale Boxes; Feed Cart; Silage Cart; Drill Press; Table Grinder; Welding Table; Grindstone; Gas Tank; Dirt Scoop; Pitch Forks; Chicken Crates.

Lister Diesel SR2; 3 Surge Milker Units; 2 Milk Pails; Milk Cans; 2 Milk Strainers.

FEW HOUSEHOLD GOODS— Drop Leaf Extension Table with boards; Desk & Bookcase Combined; Butcher Bench; Wooden Pulleys.

Items too numerous to mention. No out of state checks. Not responsible for accidents day of sale. Refreshments available.

Terms By
PAUL J. STOLTZFUS

AUCTIONEERS:
Lloyd Kreider AU000513L, Randal Kline, Roy Good, Gary Shirk



Phone (717) 786-3394

CREBS CATTLE AUCTION



Located just off Rt. 15 on Furnace Rd., 6 miles south of Lewisburg, 13 miles north of Selinsgrove. People coming from Selinsgrove side will need to cross over the two lane to your left. Watch real close for arrows. Farm has been sold as cattle must go.

THURSDAY, MARCH 6 at 11:00 Sharp
48-HIGH GRADE HOLSTEINS-48

Herd consist of 33 mature cows & springing hfrs. 15 calves born from May '85 to Jan 5, '86 certified and accredited, charts day of sale, preg. checked. Milk will be weighed, cows averaging 53 lbs., a day now. 10 first calf, 7 second.

Sires Represented:
Elevation, Jet Stream, Jemini, Spirit, Rebel Elevation, Chairman, Ned Boy, Stewart, Columbus & several other top sires.
Service Sires:
Chairman, Stewart, Spirit, Bunko Boo, Starlite, Jemini & Others.

BARN & MILK HOUSE EQUIP.

D4 Girton 400 gal. deluxe bulk tank 6905 1460 (real nice); P&D 12' silo unloader 4 yrs. old w/7 1/2 hsp. motor can be extended up to 16' real nice; Universal model 406720 milker pump w/3 hsp. motor 2 yrs. old; 2 & 3 inch air line for approx. 23 cows; 36" exhaust fan; 2-36" barn fans; 23 water bowls & line will be sold in 3 lots; 6 Surge milker units; 50 gal. elec hot water heater; Surge elec. pulsation unit; feed cart; 3-S.S. pails & a few other small items.

Sales Mgr. Note.
A good little herd here averaging 53 lbs. a day now. These cattle are not reg. Mr. Crebs has bred them as if they were. A real nice group of calves that would fit any good herd. Reserve this day for some good replacements. Selling order, barn equip. & small items at 11:00 sharp. Cattle at 11:30. See you Mar. 6.

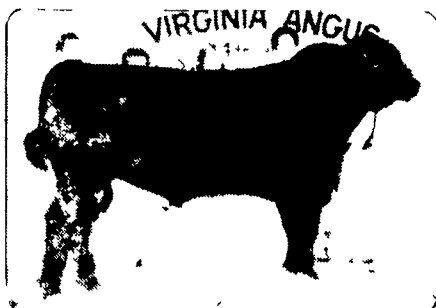
Owners-
GARY & FRANCES CREBS
Ph. 717-523-3432
717-523-0571

Auctioneer- Arlow Kiehl
AU-000488-L
Sales Mgr. Gordon Wood
Mansfield, Pa.
Ph. 717-549-4901
For the most in advertising coverage & preparing your sale. Call Wood's Auction Service.

ANGUS SINCE 1939! OATLAND FARM COW HERD DISPERSION

Saturday, March 15, 1986
11 A.M.
At The Farm Near Olney, MD

Selling: 150 Head
6 Herd Bulls • 5 Service-Age Bulls
100 Females with spring calves at side or heavy in calf



Shady Brook Big Drive 14R
HE SELLS!

Featuring the get, sale and service of these great herd bulls:
Extra Tall— Grand Champion, 1983 Maryland Breeders show. Sired by Bartman out of the world record-selling Southern Tall Erroline 29E.
Shady Brook Big Drive 14R— One of Pine drive's top sons.
Voltage HK 1564— A member of the Grand Champion Carload of Bulls, 1985 Western National Stock Show.
Aggression of GU&K— Sired by Progression out of the Triple Crown Winner, Scaara.
Extension— Sired by Bartman out of Progression's dam

A SPECIAL HIGHLIGHT

This cow herd dispersion will feature the great Oatland Duchess and Oatland Elba families—two of the most powerful families in the breed today.

For your free reference catalog, contact
TOM BURKE/DICK BECK
-Sale Managers-
AMERICAN ANGUS HALL OF FAME
At The
WORLD ANGUS HEADQUARTERS
Smithville, MO 64089
(816) 532-0811

Auctioneer:
Mike Jones



Gordie Keys

The Oatland cow herd will have calves at side by, or be close to calving by these six nationally recognized sires:

High Voltage
Pine Drive Big Sky
Dr. Spock
Wrangler
Premier Independence
Premier Celebration

Featuring many of the past Oatland champions, as well as the dams of the Oatland Farm champions that made it possible for Oatland to be the Premier Breeder at the 1983, 1984 and 1985 Maryland Shows

Featuring daughters of:

Pine Drive Big Sky
Schearbrook Shoshone
PS Sasquatch • Emulation 31
Linebacker of Wye
Mr. Angus • Briarhill JJ
Contact of Wye
Continental • Skyhigh
Patriot • Prime Rate
General JJ Patton • PS Power Play
Rosebank Connection 69
Northern Programer 382
Northern Prospector 14
Walbridge Milestone
Highway Leader
Black Revolution 1334

BREEDING ANGUS CATTLE
SINCE 1932.

GORDON C
KEYS
Box 43
Olney, MD 20832
(301) 774-4029
Larry Lipov,
Cattle Manager
(301) 774-0127



KUEHN BROTHERS' PRODUCTION SALE

At the farm; Monroeville, PA
WEDNESDAY, MARCH 12, 1986
AT 11:00 A.M.

DIRECTIONS TO FARM: Get off Exit 6 on Pa. Turnpike, take Monroeville ramp (ramp farthest left) down onto Rte. 22. Go several hundred yards to red light, turn left onto Rte. 48. After left turn Howard Johnson Motor Lodge will be on your right. Go straight ahead through three more red lights, start downhill; at the bottom turn right on MacBeth Drive. Farm is first road to the left. (Farm is about 2 mi. from Pa. Turnpike).

Accredited, Certified, Interstate Available.

45 Quality Registered Holstein cows, heifers, and calves. Cow families with type and production include 7 Ex., 13 VG Dams with records over 31,000 milk and 1100 fat. Sires include SWD Valiant, Carlin M. Ivanhoe Bell, Marshfield Elevation Tony, Paclamar Astronaut, Crescentmead Chief Stewart, Wagnercrest Ivanhoe Astronaut, Harmony Corners Simon-twin. Some of the animals selling include:

- * Vonderbar Milu Snoball, VG87, b. 7-14-78, sired by Milu Betty Ivanhoe Chief, 3-8, 365 d. 25,965 m, 3.5%, 903 f.
- * Vonderbar Astronaut Ella, VG 85, b. 12-11-80, sired by Paclamar Astronaut, 3-0, 365 d. 22,220 m, 3.7%, 821 f.
- * Vonderbar Delegate Patches, b. 9-13-83, sired by Cass River Select Delegate, her dam: VG 86, by Rosemere Fury Ivan, 3-9, 365 d. 30,701 m., 3.0%, 932 f. 2nd dam: VG 87, by Paclamar Bootmaker, 9-11, 365 d. 30,910 m., 3.6%, 1116 f. 20 records over 1000 lbs. fat from this family.
- * SWD Valiant son, born 6-19-85 from an EX 91 3E Elevation dam (4-8, 365 d. 24,466 m., 4.2%, 1036 f.)
- * Vonderbar Elevation Sally, VG 87, born 11-14-77, sired by Round Oak RagApple Elevation; 5-10, 336 d. 23,486 m., 4.3%, 1008 f.
- * Fancy bred heifer Vonderbar Mars Tony Sheena, born 11-20-83, sired by Marshfield Elevation Tony, bred to Walkway Chief Mark 6-12-85; Dam by Life O Riley Marquis King, Vg 87, 322 d. 20,525 m., 4.0%, 825 f. 2nd Dam by Northmoor Hector Leader, has 312 d. 23,927 m., 4.7%, 1114 f.
- * Heifer calf born to show (reg. pending), born 12-3-85; Sired by Harmony Corners Simon-Twin. Dam: Vonderbar Cinomen Spark, VG 86 6-7, 365 d. 26,448 m., 3.7% 987 f.

TERMS: Cash

Lunch Available Catalogs Available

Owners:
KUEHN BROTHERS
Monroeville, PA
Terry Kuehn tele. (412) 856-9171

Clark A. Yoder, Auctioneer, AU-001048-L
Salisbury, Pa. (814) 662-2901
Oren C. Bender, Pedigrees
Accident, Md. (301) 826-8340

Sale in tent
We are in Convention Country