

PUBLIC SALE OF FARM EQUIPMENT SATURDAY, MARCH 15, 1986 AT 10:00 A.M.

LOCATION: Franklin Co., PA - From I81 take exit 9. Go north on Rt. 696 to Mt. Rock Rd., turn left and go to first cross rd. Turn left onto Rice Rd. Follow to sale. Sale signs posted day of sale.

Farm Equipment

J.D. 4020 D (row crop); J.D. 420 (wide front); Deutz 10006; J.D. SS combine w/12' grain head, 3 row corn head (narrow row), 2 row corn head (wide row); J.D. 34 2 row Harvester (narrow row) w/hay head; J.D. 12' transport disc; J.D. 54 manure spreader; J.D. 24 T Baler w/thrower; J.D. 237 mounted corn picker; Oliver plow, auto. reset, 5-16; J.D. cultimulcher; J.D. 148 Front end loader; Brillion Rotary Mower; Oliver Recutter; 3 Forage wagons - Cobey, Dion, Gehl; Auger unloader for bin wagon; J.D. grain drill - 17 disc; A.C. 6 row corn planter w/monitor & dry fertilizer; J.D. #10 side mower; Mustang skid loader w/2 buckets; 2 M.F. carrier trailers; Wheel rake; #300 Ford field lift; Bale elevator; Int. 990 Haybine; 7 tooth Landoll chisel plow; A.C. silo blower; Wetmore grinder mixer; Clay Honey wagon; Swartz mixer wagon; 2 McCurdy bin wagons (just bin); 4 hay wagons; 2 grain elevators; field sprayer; Allied 275 Bu. grain Dryer.

Milker Equipment

4 DV 300 DeLaval milkers, DeLaval 76 vacuum pump, approx. 100' S.S. 2" pipeline complete with receiving jar and wash unit, Esco 475 bulk tank w/compressor.

Forage

Approx. 100 tons corn silage, approx. 100 tons high moisture corn.

Misc. Items

Drill press, 2 wheel lick tank, bench grinder, Lincoln welder, portable hog scales, approx. 50' silo pipe, silo unloader, 3 8x16 hog shelters, other misc. hog equip., wagon load of small items.

ORDER OF SALE: Small items, milker equip., farm equip., forage.
TERMS: Cash or good check, I.D. required.

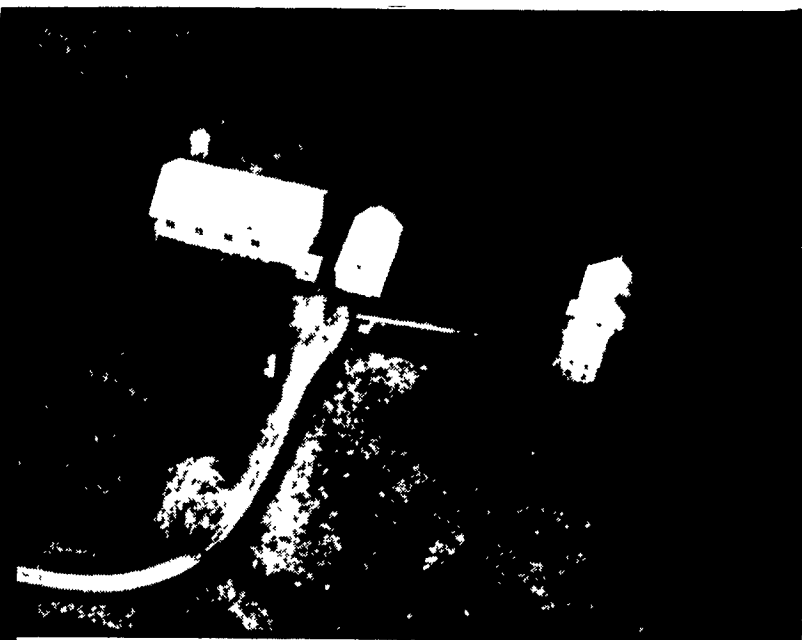
**Sale by
HOCK BROTHERS
Rice Rd.
Shippensburg, PA
Ph. 532-7987**

Auctioneers:

**Melvin Sensenig 776-5054
Lamar Sensenig 532-9160
Lic. #AA-000926-L**

Clerks: Eberly & Witmer

Lunch Served - Not Responsible for Accidents



Ralph L. Eberly Estate

PUBLIC SALE OF VALUABLE REAL ESTATE

**SATURDAY, MARCH 15, 1986
2 P.M.**

Location Millcreek Twp., Lebanon Co., Pa. Along the Stricklerstown Road between Cocalico & Newmanstown
Directions From Schaefferstown, Pa. take Rt. 419 north to village of Millbach (approx. 5 miles) turn right at church, go to stop sign, turn right (go approx. 1/4 mi.) turn left (Legislative Rt. 38012) go approx. 1 mi. to intersection (crossroad) turn right onto Stricklerstown Road, go approx. 1/4 mi. to 1st farm on the right 2 miles Southwest of Newmanstown

Real Estate Property will be offered, sub-divided into two parcels and/or as one complete farm. Total farm acreage is approx. 119.62 acre farm w/approx. 4521 road frontage approx. 96 acres tillable pasture w/never failing stream 2 story sand stone 5 bay bank barn 2 story implement shed w/corn cribs and 2 2' story dwellings 6 Rooms & Bath Electric Water Hot Water Heating System E M F Coal Stoker 5 Rooms & Bath Electric Water Electric Heat First Floor Full Cement Basement & Covered Cement Porch

Offering of sub-division parcels: Parcel #1 includes approx. 58.57 acres, approx. 33.70 acres tillable, pasture w/never failing stream, and all the buildings
Parcel #2 is approx. 61.05 acres approx. 60.5 acres tillable land

For more information on property phone Auctioneer (717)865 5129 or (717)272 7078

Terms 10% Down, Balance within 30 days
Not Responsible For Accidents

**Terms & Conditions by
ORDER OF ADMINISTRATORS
PAUL A. EBERLY
(717) 949-3653
CURT W. EBERLY
(717) 949-6842
HUGH L. EBERLY
(215) 589-2011
Atty. WM. E. SCHADLER**

**Auctioneers:
Clayton C. Kleinfelter & Sons,
AU-000497-L
105 Chapel St.
Lebanon, Pa. 17042**

PUBLIC AUCTION

**Trucks - Roofing Equip. & Supplies
& Building Materials
FRIDAY, MAR. 14, 1986
AT 9:00 A.M.**

From G.V. Sutton Leasing Co., & G.V. Sutton Inc., 3250 Alta Vista Road, (Weiglestown) Dover, Pa. Off Rt. 74, north of York, Pa. in Weiglestown - Across from Carl Cook Auto Sales on Alta Vista Rd. "Watch for Signs."

NOTE: This is not a "Going Out of Business" sale; this is a sale to reduce inventory & make room for expansion.

Vehicles & Boat

1979 Chevrolet crew cab, 1978 Chevrolet crew cab (both trucks run good), two (2) storage van trailers in good shape, 21' Sea Ray, center console with twin 85 hp. Evinrude motors on easy loader trailer. Sea Ray has new compass & is equipped with C-B radio. 1979 Chevrolet Scottsdale 3/4 ton with side boxes. 1983 Ford van, Gladiator conversion (excellent condition). Ladder racks for pick-up trucks, two (2) spools of 9/16 IWRC, 250' each (not recommended for crane work).

Roofing Equipment

100's of pieces of 6'6" mason scaffolding, like new Aeroil mason's power hoist and mono-rail with block & brick forks, roofers mono-rail hoist, new Aeroil lap sealer machine for rubber roofing (used 2 days), Aeroil roof cutter, Aeroil 52' telescoping hoist. 3 Hot lugger, Aeroil 120 patch tar kettle, Reeves 400 gallon pumper kettle (just cleaned), Clearfield 68' belt conveyor, 35' Fruehauf flat bed trailer with sides, Tandem for parts, Cold King cold-process roofing machine with hose and hose reel, new Stator pump for the Cold King (never used).

Building Materials

Building materials of all kinds: such as several skids of used Vermont colored roofing slate, several squares of new Vermont slate, miscellaneous asphalt shingles, several bags of white shingle granules, coatings, cements; misc. rolled roofing, several squares of tapered foam glass & flat glass roof insulation. Hand-split wood shingles, 3/4 to 1 1/4" approx. 40 squares, 24" #1 Royal red Cedar shingles, Ludowici clay tile & accessories, EPS insulation - tapered & flat.

Miscellaneous

Misc. nuts, bolts, pipe vise, 100's of chain link fence parts, misc. steel & aluminum, sidings & trim, misc. paints, Sun Stop glass tinting equipment, various colors of tints.

2" Power vise, pipe threaders, pipe fittings of all sizes, storm windows, skylights, 100' free standing two-way radio tower, stainless steel thru-wall flashings, Black & Decker electric demo saw, other items too numerous to mention

Refreshments & lunch will be served by Sarrah's Daughters from the Rock Church.

**TERMS: CASH OR GOOD CHECK.
FULL SETTLEMENT SALE DAY.**

**G.V. SUTTON LEASING CO.
G.V. SUTTON INC.**

**AUCTIONEER:
Blaine N. Rentzel
Emigsville, Pa.
717-764-6412
Pa. Lic. #761-L**

FARM EQUIPMENT SALE

having sold our farm we will sell on the farm located five miles south of Chambersburg, Pa. and Rte. 81, Wayne Ave. Exit, Rte. 316 or five miles north of Waynesboro on Rte. 316, turn southwest off Rte. 316 on Hades Church Rd. Proceed about one mile to Rock Hill Rd., short distance to sale, or from Shady Grove and Rte. 16 take Hades Church Rd., watch for signs on

**SATURDAY, MARCH 8, 1986
Sale at 9:30 A.M.**

4 TRACTORS - TRUCKS - TILLAGE EQUIPMENT

Case 2090 diesel, cab, heater, air, radio, wts., new radial tires, 1550 hrs. fully equipped; Case 1370 diesel, 1675 hrs., new tires, ex. cond; John Deere 2510 diesel, narrow front, new tires, overhauled; 1957 John Deere model 820 diesel, perfect cond., good rubber, 20 Case suitcase wts.; 7 J.D. front wts.; 1969 Int. 1800 Loadstar truck with 18 ft. metal bed, 44 in. sides, 17 ton dump lift; 1963 Ford pickup; J.D. R T 40 - 4 row 3 pt. cults; Int. 710, 5-18 in. auto-reset plow with hillside hitch; Rhino 32 blade heavy disc; Athens 11 ft. chisel plow; J.D. KBA transport disc; 2 Int. 19 B disc harrows;

S.P. COMBINE - GRAIN & CORN EQUIPMENT

Case 660 S.P. combine, cab, 10 ft. head; Int. No. 510, 18 disc drill with seed box; New Idea 324 - 2 row picker, 12 roll bed, ex. cond; J.D. 237 mounted picker, N.H. 38 ft. elevator, Smoker roll way elev.; 4 in. grain auger, White 5400 - 4 row No Till planter with monitor, 4 gravity wagons, Gehl 10 T with Kil-Bros 350 bin; Grove 6 T with Kil-Bros 350 bin, 1 bin has auger attach.; A.C. 7 T with Kil-Bros 300 bin; Grove wagon with N.H. bin;

HAY & FORAGE EQUIPMENT - MISC. EQUIPMENT

Gehl 1400 round baler, like new; J.D. 336 baler with thrower, Farmhand wheel rake; windrow turner, Jer-Dan and Gehl 8 T wagons with bale racks; 2 old wagons with sides; Hesston 6400 Hydrostatic windrower, 10 ft. head; Vicon rotary mower-cond., like new; Vicon rake-tedder, J.D. No. 7 mower, Hesston No. 10 Stackhand; stack mover, Gehl 1200 forage harv., 2 row wide corn head, pickup attach; knife sharpener, all power, 3 screens, ex. cond.; Farmhand grinder-blower, like new; 2 Gehl 920 forage wagons with 12 T tandem gears, roofs, ext. tongues; 2 Grove forage wagons; old Brady chopper, Huski 300 gal. sprayer, 200 gal. sprayer, both have large pumps; 2 J.D. No. 54 P.T.O. spreaders with endgates; Shaver post driver, 3 pt. post splitter, 2 - 24 tooth harrows; loader bucket; hay feeders; stock trailer, dump trailer, gates, hyd. cylinders, log chains, several loads of small items.

AUCTIONEER'S NOTE - For a fine lot of modern equipment don't miss this sale.

TERMS - Cash or Good Check. Identification required.

Lunch stand reserved

**MR. & MRS. DANIEL BINGAMAN, JR.
& SUSAN, Owners
6780 Rock Hill Rd.
Waynesboro, Pa. 17268
Phone 717-264-2190**

Ralph W. Horst, Auctioneer
Lic. No. AU-000-437L
David Gossert, Assisting
Gossert / Harshman, Clerks

PUBLIC AUCTION



**New Holland Sales Stables, Inc.
New Holland, Pa.**



Tractors & Horse Drawn Farm Equipment-Supplies-Small Items

FRIDAY, MARCH 14, 1986

SALE OF SMALL ITEMS 9:00 A.M.

FARM EQUIPMENT 10:00 A.M.

New customers and out of state buyers must have current bank letter of credit with guaranteed amount or cashier checks.

A list of your sale items must be in our office by Tuesday, March 4 to be included in our complete listing in the March 8 issue.

Abe Diffenbach, Manager

For more information contact Abe Diffenbach or Norman Kolb at 717 354 4341

NEXT FARM EQUIPMENT SALE APRIL 4