

**MAILBOX MARKET FOR SALE**

Case S C farm tractor, JD 2 btm plow, make offer; Military Jeep, 1944 Montg Co., 215-933-2469

BOOKS make great Christmas Gifts Huge collections available w/line items under \$20 Call Ron York 17-235 2134

Rebuilt Maytag wringer washers, \$195. Optional Honda, Kawasaki, Briggs, or air motor Samuel Stoltzfus, 2447 Stumptown Rd., Bird-in-Hand, Pa 17505

**MAILBOX MARKET WANTED**

9x32, 4 ply tractor tire. Give price and location Adams Co 717-359-4371

3PTH rock rake Berks Co. 215-682-2013.

2 Blace ewe lambs. Lanc. Co. 717-872-5742 eves

Bleachers for spectators, metal frame 814-447-5528 or 814-448-2849.

Grass seeder attachments to fit IH 510, 16 disc grain drill, new or used. Both front and rear. Mifflin Co 717-483-6996

To Rent: Al tech. needs modern, 3 br home. Intercourse/Strasburg area Needed by March 1st York Co 717-792-0449

Used preserver applicator to mount on baler Franklin Co 717-532-3278

Used woven wire fence in fair or good shape Also used steel posts Lebanon, 717-272-8501

Sheep, healthy and without problems. Monroe Co. 215-381-3780 before 9 AM.

10 to 12 brown laying chickens. Lanc. Co., Lititz 717-627-0697.

Southdown ewe lamb, bottle fed for pet. Write Robert Rauhauser, Thomasville, PA 17364, 717-792-0278 eves.

3 calves, Simmental Holstein cross, 3 to 6 weeks old, 2 laying bronze turkey hens. Lanc Co. 717-872-7274.

18-34 rims for JD, QT grain head for MF. Fulton Co. 717-294-3407.

Need someone to shear sheep in Quarryville area Lanc. Co. 717-786-3935 after 5 PM.

Old cigar labels and salesmans sample books. Any quality. Dauphin Co. 717-692-2493.

Would like address of Amish who lives in Lanc. Co. that makes childrens wooden wagons Berks Co. 215-488-1220

Used Pea Sheller in good condition. 717-438-3701, Perry Co.

Heavy duty shaper w/1" or 1 1/2" spindle & 24" heavy duty planer, good condition Joseph Peight, RD1, Box 48A, Belleville, PA 17004, Mifflin Co.

Used Madison Concrete Stave Silo in good cond. Snyder Co Ella Rissler, RD1, Port Trevorton, PA 17864

Three point hitch PTO hammer mill. Call after 6 p.m., Monroe Co., 717-992-2963

12-15 HP outboard motor, 5-10 years old, good condition Chester Co After 6 p.m., 215-932-3286

Seeking quality new handcrafts from quilts (or piecing) to anything Direct from maker McCool, Box 103, Franklinville, NJ 08322, 609-694-3448

Mennonite family needs house to rent before April 1st with job opportunity in the Lancaster Lebanon Co area Poultry exp Zimmerman, 717-653-9092

Shallow well jet pump 100 Pcs tobacco lath. Lanc Co. 717-397-4360

6500 Leghorn yearling floor birds for molting Call 717-768-3933 7-8 a.m.

4 Good 17 5" tires, 16" and 16.5" Chevy 8 lug dual rims Call collect, Somerset Co., 201-359-5778

Operators manuals for AC B tractor, plow, cultivator and sickle bar mower Sussex Co DE. 302-422-9529

Thrower for MF12 Blaer, small feed mill and hammer mill or roller mill. Call nights, 301-432-6043, Wash. Co., MD

1972 Plym Satelite with good front end. Within one hour from Westchester 215-696-1703

Used feed tank between 12 & 25 tons Culpeper, VA, 703-825-1864.

Dairy farm wanted: Lease purchase Lease 5 years then buy. 60-100 tillable & pasture Excellent references, good credit. 215-766-0890 after 7:30 p.m.

Sprayer to fit on front of Gravely commercial 10A. 215-598-3206, Bucks Co., PA.

Old gas station hand pump. Also, hand water pump, small wagon wheel about 30", reasonable. Montg. Co., 215-947-0204.

2 Asparagus bunchers, 1 row vegetable planter, side dresser for Farmall Cub Warren Co., NJ. 201-689-1641

Spicer rear-rear for Int. 1/2 ton pickup, 5 lug, 4.09 ratio, IHC code 14028 model RA-28. Schuykill C.W. Rohart, R.D.1, Barnesville, Pa 18214 717-467-2792

4 btm JD or IHC mounted 2 way plow TRADE 6341 Oliver 3-4 btm mounted 2 way plow Kent Co 302-335-5011

Oliver OC-3, OC-4 or OC-46 crawler w/good undercarriage for parts Bruce Kibort, R D 2, Box 79, Elmer, NJ 08318 Salem Co 609-358-7468

**PUBLIC AUCTION VALUABLE FARM EQUIPMENT**

**FRIDAY, MARCH 7, 1986 at 10:30 A.M.**

(3 miles S. th of Allentown) turn West off Rt. 309 onto Saucon Valley Rd. approx. 2 blocks, turn left onto Lanark Rd., to 1st Farm on Right in Upper Saucon Twp., Lehigh Co., Pa.

**TRACTORS:**  
MF 285 diesel tractor, wf., 810 hrs.; MF 65 tricycle diesel tractor; MF 135 diesel tractor; MF 175 diesel, 2340 hrs.

**COMBINE**  
MF 300 diesel w/12' hume reel & 2 r wide #24 c head.

**TILLAGE & PLANTING**  
MF 3 pt. 4-4" pl.; 3 pt 8' high clearance chisel pl.; 2- Pittsburg 9' and 10' tandem transport discs ; JD 10' roller harrow; JD 9' single roll cultipacker; 3 pt. three sec. harrow; JD 494-A corn planter; JD FB-15 single disc. grain drill.

**HAYING**  
NH 469 haybine; NH 451-3 pt. mower; NH 56 rake; NH 273 baler w/thrower; 2- NH wide track bale side wagons; NI bale side wagon; NH wide track chassis w/hyd. dump; 2 gravity grain wagons; NH 24' bale elev.

**MISC.**  
NH 33 flail copper; NH super 23 pto. hopper silage blower; 40'-9" blower pipe; NI 324 two row wide pull type c husker; NI 205 flail manure spreader; Little Giant 24' single chain elev on transport wheels; Sauder frt end loader; NH 10' lime spreader; MF frt. mtd. 4 r culti , 3 pt. 2 r culti.; 3 pt. post hole digger; Caldwell 3 pt 6' rotary cutter; 200 gal. trailer weed sprayer; 3000 lb. chain block; cattle dehorner; Clay 200' barn cleaner; Esco 600 gal. milk tank w/ice bank; dbl. ss rinse tubs; 4-ss carrying pails; plus many items not listed

Terms- Cash or acceptable check For **FRANKLIN W. LICHTENWALNER**

Conducted by **Ralph W. Zottlemoyer Auction Co. Inc.** (215) 395-8084 Pa. License AU-001809-L Refreshments Available

**PUBLIC SALE**

**FARM EQUIPMENT • TRACTOR, D2 CATERPILLAR ANTIQUES, HOUSEHOLD GOODS AND TOOLS SATURDAY, MARCH 8, 1986 9:00 A.M.**

Located North of Womelsdorf, on Forge Road (off road to Christmas Village), 1/2 mile off Route 419, Berks County, PA. Watch for sale arrows.

**D2 Caterpillar Diesel Bulldozer Ford 8N Tractor**

BLACK HAWK GRAIN DRILL, 2-BOTTOM FORD PLOW, 3-BOTTOM MASSEY PLOW, CULTIPACKER, FORD DISC, FIELD SPRAYER AND PUMP WITH POLY TANK, FORD 3-PT. CULTIVATOR, HYDRAULIC LIFT RUBBER TIRE WAGON, CORN AND HAY ELEVATOR, Horse Cultivator, Hay Rake, Potato Picker, 2-Row Corn Planter, Gravely Tractor with Sickle Bar and Snow Pusher, (2) 275 Gal. Gas Tanks on Skids, 1,000 Gal. Tank on Skid, Old Farm Wagon, Cement Mixer, Buzz Saw, Planet Jr. Planter, Riding Mower, Trench Digging Hook, Platform Scale, CHESTNUT BARN RAFTERS, 2x4's, 2x6's, 7 Hog Troughs, WOODEN WHEELBARROW AND EXPRESS WAGON, Cider Press, Grindstone, Banding Machine, Ladders, Large Corrugated Pipes.

**1958 Buick 4-Door Special (89,000 Miles-Restored)**

1959 2-DOOR CADAILLAC (ROUGH SHAPE), Heavy Duty Chains, Hydraulic Jack, Strap Hinges, Milk Can, Paint Sprayer, Bench Vise, Shovels, Picks, Hoes, Scrap Iron.

**Large Marble Top Table Oak Ice Box Parlor Pump Organ**

SELF PLAYER PIANO, GOV. WINTHROP DESK, JELLY CUPBOARD, OAK DRESSER, Waterfall Bedroom Suite, Washstand, ROUND TOP TRUNK, Plank Seat High Chair, Oak Chairs, Piano Stool, LARGE OIL PAINTING, #9 Lionel Train Set, Guitar, SHELF CLOCK, Old yardies, TIN BEER ADV. SIGNS, Lot of Everyday Items, Baskets, Jugs, Advertising Items, Old Clothing and loads of other items too numerous to mention.

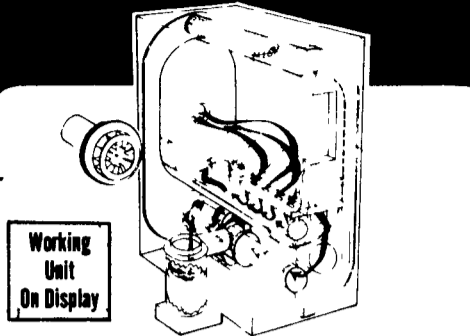
SALE TO COMMENCE AT 9:00 A.M. SHARP!

Terms by **GEORGE RUTH**

DALE L. PUTT, Auctioneer AU-000733-L

Phone Area (717) 859-1430 Not Responsible for Accidents Refreshments will be sold.

**Automatic Cycling WOOD GASIFICATION BOILER**



**ESHLAND Wood Gun**

- Eliminates Creosote Build-up
  - Lower Fuel Consumption
  - 84% Wood, 85% Oil Efficiency
  - Available in sizes from 80,000 to 500,000 BTU/hr with auto. oil backup.
- By using dense refractory material, complete combustion occurs at temperatures exceeding 2000°F No smoke... No creosote build-up!

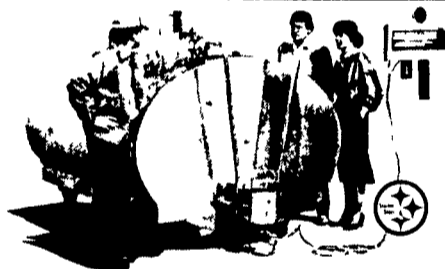
SEE OUR DISPLAY AT THE HARRISBURG HOME BUILDERS SHOW OUTSIDE- MARCH 1 THRU 9 LOC: FARM SHOW BUILDING

**ALTERNATIVE ENERGY SYSTEMS**

Allen Lawver 504 E. Main St., New Holland, PA 17557 PH: 717-354-0412

★ FREE HEATING SURVEY & ESTIMATE ★

**take a closer look!**



there's just no substitute for a HiPerForm!

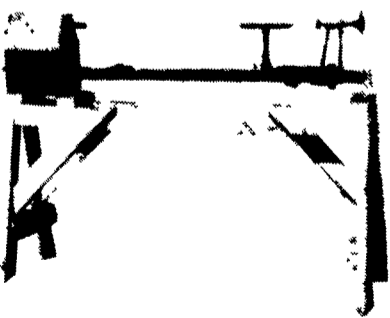
**MUELLER HiPerForm**

Used Tanks & Compressors Available

**MARTIN'S REFRIGERATION SERVICE**

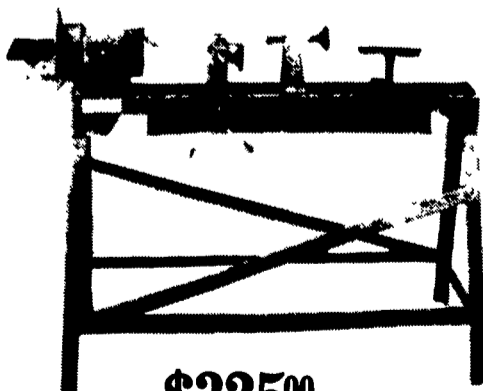
Phone (717) 352-2783 1122 Woodstock Rd., Fayetteville, Pa 17222 Sales & Service

**WOODWORKING SPECIALS**



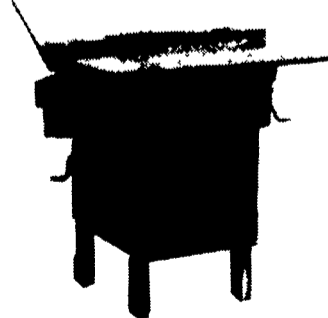
**\$155<sup>00</sup> WOOD TURNING LATHE**

40" Center to Center 15" swing • 1/2 hp Motor



**\$325<sup>00</sup> WOOD COPY LATHE**

40"x14" • 3/4 hp Motor Will Accurately Copy Table Leg, Chair Leg, Etc.



**\$365<sup>00</sup> EDGE AND FORM SANDER**

Both Tables Adjustable 80" Belt • 3/4 hp Motor



**Hillside Sales • Allen N. Hoover**

(215) 445-7307

1/2 Mile off 625 on Spock Lane, Between Terre Hill and Bowmansville