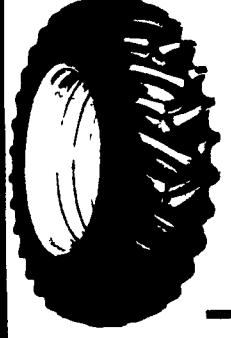


MARCH SPECIALS ON Firestone TIRES

Firestone Traction Field And Road

9.5x16, 4 Ply.....	*90	23.1x30, 8 Ply.....	*675
18.4x161, 6 Ply.....	*283	16.9x34, 6 Ply.....	*305
8.3x34, 4 Ply.....	*80	18.4x34, 6 Ply.....	*313
9.5x24, 4 Ply.....	*87	18.4x34, 8 Ply.....	*376
11.2x24, 4 Ply.....	*103	20.8x34, 6 Ply.....	*449
11.2x24, 6 Ply.....	*126	20.8x34, 8 Ply.....	*577
12.4x24, 4 Ply.....	*123	9.5x36, 4 Ply.....	*151
12.4x24, 8 Ply.....	*167	13.6x38, 4 Ply.....	*178
14.9x24, 4 Ply.....	*156	13.6x38, 6 Ply.....	*209
13.6x26, 6 Ply.....	*207	14.9x38, 6 Ply.....	*243
12.4x28, 4 Ply.....	*132	15.5x38, 6 Ply.....	*251
13.6x28, 4 Ply.....	*148	15.5x38, 8 Ply.....	*304
13.6x28, 10 Ply.....	*268	16.9x38, 6 Ply.....	*332
14.9x28, 4 Ply.....	*168	18.4x38, 6 Ply.....	*360
14.9x28, 6 Ply.....	*195	18.4x38, 8 Ply.....	*414
16.9x28, 6 Ply.....	*242	20.8x38, 8 Ply.....	*526
18.4x28, 6 Ply.....	*292	20.8x38, 10 Ply.....	*603
16.9x30, 6 Ply.....	*273	9.5x42, 6 Ply.....	*198
18.4x30, 6 Ply.....	*296	12.4x42, 6 Ply.....	*252



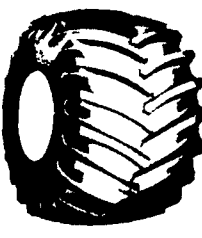
SUPER SPECIAL

All Traction 23° Short & Long Bar

16.9x28, 6 Ply.....	*250
20.8x38, 8 Ply.....	*450

FIRESTONE RADIAL 23°™

18.4R34, 6 ply.....	*399.00
16.9R38, 6 ply.....	*419.00
18.4R38, 10 ply.....	*529.00
20.8R38, 8 ply.....	*649.00
20.8R38, 10 ply.....	*699.00
18.4R42, 10 ply.....	*549.00
20.8R42, 10 ply.....	*699.00



FIRESTONE POWER IMPLEMENT TIRE

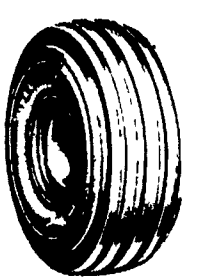
125Lx15, 6 ply..	*105.00
125Lx15, 8 ply..	*115.00
125Lx15, 12 ply..	*130.00
1350x161, 6 ply.....	*150.00
165Lx161, 6 ply.....	*210.00



FORESTRY SPECIAL WIDE TREAD PLY TIRE

Check These Prices...

18.4x26, 10 ply..	*499.00
23.1x26, 10 ply..	*899.00
28L26, 10 ply..	*1049.00
24.5x32, 12 ply.....	*1230.00
30.5L32, 12 ply.....	*1499.00
30.5L32, 16 ply.....	*1749.00
18.4x34, 10 ply..	*699.00



FIRESTONE 5-RIB WAGON & TRAILER TIRE

• Shock Fortified™ Nylon Cord Body
• Super R Tuf Rubber Compounds Resist Damaging Effects of Acid

9.5L-14, 8 ply..	*44.00
9.5L-15, 8 ply..	*39.00
11L-15, 6 ply..	*42.00
11L-15, 8 ply..	*43.00
12.5L-15, 8 ply..	*60.00
12.5L-15, 10 ply.....	*75.00
16.5L-16.1, 10 ply.....	*160.00



We Install Tires On Your Farm

- Centre Hall
- Williamsport
- Sunbury • Allentown
- North Penna.
- New Jersey
- Northern Maryland

MUMMAU FIRESTONE

Serving Farmers In Penna. New Jersey Northern Maryland and Delaware

Out Of State 717-653-1260 In Penna. 1-800-222-1729

Warm-season grass booklet available

ANKENY, Iowa - Supplementing cool-season forages with warm-season grasses can enhance livestock production and provide other conservation benefits in the northeastern and midwestern regions of the United States.

These benefits, along with guidelines for establishing warm-season grass pastures, are explained in a new publication, "Warm-Season Grasses: Balancing Forage Programs in the Northeast and Southern Corn Belt," from the Soil Conservation Society of America.

The booklet also explains how warm-season grasses can be used for wildlife plantings, reclamation, and other conservation uses.

Single copies of the 35-page publication are \$5. Orders should be sent to SCSA, 7515 N.E. Ankeny Road, Ankeny, Iowa 50021-9764.

BUY SELL TRADE OR RENT THROUGH THE CLASSIFIED ADS

PHONE: 717-626-1164 or 717-394-3047

1 FARM EQUIPMENT

JD 4230 4WD, cab, air, \$11,500. 717-532-8601

JD 4230, fender tractor, dual hyd., \$8500. 814-793-4293.

JD 4230, QR, fenders, 1975 model, nice condition, \$8,500. 717-532-8601.

JD 4240, cab, air, dual hyd., low hours, \$18,500. 717-532-8601.

JD 4440 air, stereo, dual hydraulic, dual tires, under 900 hrs., excellent condition, \$31,000. 717-759-1308.

JD 4440 tractor w/sound guard cab, very good condition, \$20,000 delivered. 607-478-8277

JD 450-C Dozer, 1979 with 6-way blade & canopy, \$20,000 delivered. 607-478-8277

JD 450 Crawler loader, new undercarriage, pads, chain, pins & bushings, excellent condition, \$11,000. 814-793-4293

JD 4630 cab, air, power shift. 814-793-4293.

JD 4020, 72 model, roll guard, dual hyd., excellent. 814-793-4293

JD 4020 diesel, turbo, mint condition; Farmall M.D., JD 6/16, hyd. reset; JD 1240 planter, insecticide boxes; JD 15x7 VanBrunt drill. 201-689-1902 after 5:30 PM

JD 4020 gas, WF, 1967, good condition, \$5,600 814-793-2339.

JD 4020, side console, in A1 condition, \$8,500 717-532-8601

JD 40 Tractor, WFE, high crop, 3-pt hitch, real nice w/506 JD mower & cultivators. Farmall Super M, WFE, real nice AC WD 45, diesel, WFE, PS, wheel weights, excellent MF Hay Wagon, nice 215-269-9528 evenings

JD 2940, 4WD, w/roll guard, 38" rubber, 1300 hours 814-793-4293

JD 2940, like new, 710 hours, roll guard, \$13,000 814-793-4293

International 620 drill, double disc openers, press wheels, excellent condition, \$3,500 JD Maxi-merge 7000 corn planter, dry fertilizer, cross fertilizer auger, insecticide boxes, double disc openers, conventional, very good condition, \$3,500. NH 272 Baler, hyd. control kicker, hay guard applicator, good condition, \$2,500. Chester Co. 215-933-2356 evenings

Int. Super C with hyd. lift and cult. Runs excellent, \$2,000 firm; Int. Cub Hi Boy, draw bar, \$850. 201-579-1443.

IRRIGATION PIPE. 8", 6" & 4"x30" aluminum. 717-532-9108.

JD 1020 Tractor, with rotary mower, \$4,000. 215-754-7925.

JD 1209 Mower Conditioner, used three seasons, \$5,000/best offer. 814-793-2877

JD 146 or 148 loader mounting brackets for 2840. \$485. 814-793-2339

JD 1520 diesel, hi-low, independent PTO, nice condition, \$5,200 717-532-8601

JD 1530 Diesel, original rubber & original owner, extra clean, \$5195. JD 3020 Diesel, side console, new 18" rubber, extra clean, \$7200 or best offer 717-529-2512.

JD 2240 diesel, hi-low, live PTO, 145 loader, nice. \$9,500. 717-532-8601

JD 2640, utility tractor, good condition, \$7500 814-793-4293

JD 2840, bought new in '79 original owner \$9,500. 814-793-2339.

JD 2840, excellent condition. 814-793-4293.

JD 2840, low/high, sunroof, in good condition \$8500/offer. Lanc. Co. 717-354-6706.

JD 2840, original tires, nice condition. \$9,500. 717-532-8601.

MF 42 mower, used 10 acres, electric box for generator Susquehanna Co. 717-222-4432

MF tractor, 1085 diesel, 900 hours, 3 pt. hitch, dual hydraulics, 12 speed, 16 9x38 tires, like new Reasonable 609-768-1634

Myers snow plow, power angle and lift, like new condition, headlights and mount for Chevy pickup, \$1,435 firm Halifax, 717-362-9515.

New Idea round baler 484, 4'x5' bale, knife to cut bale in half Used 1 year \$6,500 717-866-2246

New JD 2350, \$13,800 cash deal 717-532-8601.
New JD 2950 diesel, \$16,900 cash deal. 717-532-8601.
NH 27 blower, whirl feed, excellent condition. J&L Equipment, St. Thomas, PA. 717-369-2637
NH 479 Haybine, \$2400. 717-548-2877.
NH tank spreader, tandem axle, good shape, \$1,500. 717-665-3860.

NI 900 Series corn planter, like new, 4R. Sale or trade. 717-532-2699.

Oliver 1355, 143 hp, \$6,000. 814-793-4293.

Oliver 1650 w/3-spd., WF 814-793-4293.

Oliver 2255, 3208 Cat engine, cab & air 814-793-4293.

Oliver 4R corn planter, model 543, w/fertilizer & insecticide hoppers Working condition. Will sell for reasonable offer 215-488-7155.

One complete Bou-Matic pipeline system and Darr-Kool bulk tank; 2 bale wagons; 1 Schuller feed cart, 1 Harvestore roller mill; 1 Grove dump wagon Phone 717-328-5746 after 7 PM

IH 1466, \$8,750.; 1066, \$9,500.; 966, \$8,600.; 1026 hydro, \$8,200.; 656 gas, \$4,800.; 706 diesel, \$5,000.; 400 gas, \$1,600.; 460 gas, \$2,250.; 560 gas, \$2,200.; JD 4020 PS, \$7,200.; 4020, \$7,800.; 3020 gas, \$5,000.; 3010 diesel, \$3,300.; 4010 diesel, \$5,500.; JD B, \$850.; Case 1370, \$7,000.; 930, \$4,200. Ford 5000, \$5,500.; 570 cock shut, \$1,800.; Oliver 1650, needs work, \$2,000.; Deutz 7206, like new, \$9,500.; 25 sets of plows; 6 heavy discs; IH 615 combine, 2 heads, \$5,500.; MF 300, \$5,500.; 750 diesel, 2 heads, \$25,000.; K Gleaner, 2 heads, \$7,200.; New 500 gallon sprayer, \$1,700.; Noble 12' mix in till, \$5,000. Glenn & Mike Erdley. 717-524-0713

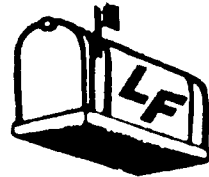
IH 56 4 row corn planter, IH 990 hay conditioner; 4 row Hershey transplanter. 717-284-4601
IH 584 diesel tractor w/a 2250 quick-attach loader, both in like new condition 717-733-4583
IH 656 dsl., 3400 hrs., \$5,000.; IH 130 tractor, \$1,800.; 5 ton Willmar fertilizer spreader, \$1,500. All in good condition. 215-777-0052 or 215-775-0508
IH 756D, Cab-H, WF, 3 pt., 540-1000 rebuilt TA motor, clutch, trans, 18-34 80%, v good \$8,500. Neg 717-945-7716

CLASSIFIED AD ORDER BLANK

PLEASE WRITE CLEARLY

MAIL TO:
LANCASTER FARMING
P O Box 366 Lititz PA 17543

DEADLINES:
SECTION B WEDNESDAY
AT 5:00 P.M.
SECTION C THURSDAY AT 9:00 A.M.
OF EACH WEEK'S PUBLICATION



NOTE: Please do not use this form for Mail Box Market Ads, see instructions in Section D with Mailbox Markets

Name _____
Address _____
City _____ State _____
Zip _____ Phone () _____
Please publish my word ad _____ times
starting with the issue _____
_____ I enclose

Box Replies Ads with answers coming to a box number c/o Lancaster Farming \$2.00 additional. This newspaper will not be responsible for more than one incorrect insertion of any advertisement

CLASSIFIED ADVERTISING RATES

29¢ per word per week 1 or 2 times			
23¢ per word per week 3 or more times			
11 word minimum			
Words	1 Time	2 Times	3 Times
up to 11	3 19	6 38	7 59
12	3 48	6 96	8 28
13	3 77	7 54	8 97
14	4 06	8 12	9 66
15	4 35	8 70	10 35
16	4 64	9 28	11 04
17	4 93	9 86	11 73
18	5 22	10 44	12 42
19	5 51	11 02	13 11
20	5 80	11 60	13 80

- The following categories are available for your classified advertising in Section C Deadline: Thursday morning at 9 of each week's publication
- 1 Farm Equipment
 - 2 Farm Equipment Wanted
 - 3 Silos and Unloaders
 - 4 Building and Supplies
 - 5 Grain Equipment
 - 6 Dairy Equipment
- The following categories are available for your classified advertising in Section B Deadline: Wednesday afternoon at 5 of each week's publication
- 7 Livestock Equipment
 - 8 Cattle
 - 9 Horses & Mules
 - 10 Sheep & Goats
 - 11 Swine
 - 12 Artificial Breeding
 - 13 Hog Equipment & Supplies
 - 14 Poultry & Supplies
 - 15 Feed & Seed
 - 16 Fertilizer
 - 17 Plants
 - 18 Fruits & Vegetables
 - 19 Nursery
 - 20 Lawn & Garden
 - 21 Services Offered
 - 22 Custom Work
 - 23 Help Wanted
 - 24 Situations Wanted
 - 25 Business Opportunities
 - 26 Household
 - 27 Pets
 - 28 Lost
 - 29 Found
 - 30 Computers
 - 31 Notice
 - 32 Miscellaneous
 - 33 Recreational Vehicles
 - 34 Autos
 - 35 Trucks and Trailers
 - 36 Real Estate