



Livestock market and auction news

Virginia Auction Summary

Feb. 13-19, 1986

Report supplied by VDA South & Southwest Va.

Receipts: 3,372.

Trend: Uneven 3.00 higher to 2.00 lower.

STEERS: Medium 1 300-500 lbs. 59.00-70.50; 500-700 lbs. 57.25-66.00; 700-1000 lbs. 52.00-57.75. Large 1 300-500 lbs. 65.00-73.00; 500-700 lbs. 55.00-65.00; 700-1000 lbs. 53.75-56.00. Small 1 300-500 lbs. 54.00-67.00; 500-700 lbs. 51.00-57.00; 700-1000 lbs. 51.00-54.00.

HEIFERS: Medium 1 300-500 lbs. 49.00-57.50, 500-700 lbs. 52.50-60.00; 700-900 lbs. 46.75-50.00. Large 1 300-500 lbs. 50.00-57.50; 500-700 lbs. 46.75-53.50; 700-900 lbs. 48.00-

50.00. Small 1 300-500 lbs. 48.50-56.50; 500-700 lbs. 42.00-48.50.

Northern, Va. Feb. 13-19, 1986

STEERS: Medium 1 300-500 lbs. 55.00-68.50; 500-700 lbs. 54.00-66.00; 700-1000 lbs. 50.50-57.25. Large 1 500-700 lbs. 58.50; 700-1000 lbs. 52.00-54.50. Small 1 300-500 lbs. 56.00-60.50; 500-700 lbs. 51.50-62.00.

HEIFERS: Medium 1 300-500 lbs. 46.75-48.25; 500-700 lbs. 48.00-54.00; 700-900 lbs. 44.00-42.75. Large 1 300-500 lbs. 49.00-55.00; 500-700 lbs. 50.00-57.50. Small 1 300-500 lbs. 43.75-54.25; 500-700 lbs. 46.75-51.50.

Shenandoah Valley Livestock

Harrisonburg, Va. Saturday, Feb. 15

Report supplied by auction

FEEDER CATTLE: STEERS: 1 1/2 higher. M&L-1 300-500 lbs. 64.50-68.50; 500-700 lbs. 58.50-62.00; 700-1000 lbs. 52.00-56.50. S-L&M&L-2 300-500 lbs. 58.50-60.50.

FEEDER BULLS: Too Few to Trend. M&L-1 500-700 lbs. 53.00-56.50.

HEIFERS: Too Few to Trend. M&L-1 300-500 lbs. 53.75-55.75; 500-700 lbs. 48.00-51.00.

STOCK COWS: Baby Calves 42.00-108.00.

SLAUGHTER COWS: Steady to 50 cents higher. Utility & Commercial 2-4 32.75-37.50, 1 at 39.25; Canner & Cutters 1-3 27.00-32.75.

SLAUGHTER BULLS: 1 & 2. 43.50-46.00.

LAMBS: Trend. Blue 0. High Choice & Prime 68.50; Feeder Lambs Choice 69.00; Slaughter Ewes 20.00-25.50; Head Ewes 50.00-76.00.

HOGS: US 1-3 200-240 lbs. 43.75; Sows 1-3 few 41.00-41.50; Boars 30.50.

SLAUGHTER BULLS: Good & Choice 50.00-55.00.

Four States Livestock

Hagerstown, Md.

Wednesday, Feb. 12

Report supplied by Auction

SLAUGHTER: Fed Steers- \$1.00 Lower. Choice \$53.00-55.00; Good 48.00-52.00; Medium 42.00-47.00. Heifers- Good Run. Choice \$50.00-53.00; Good 45.00-49.00; Medium 40.00-44.00. Cows- Steady with last week. High Yield \$37.00-38.25; Average 34.00-37.00; Big Middle 29.00-33.00; Fatty Herf. 28.00-32.00; Shelly 30.00-down. Fat Bulls- \$1.00 lower. Good \$46.00-49.25; Medium 42.00-45.00. Veal Calves- Heavy Calves Steady. Light Calves \$3.00

lower; Choice \$35.00-39.00; Good 75.00-84.00; Medium 65.00-74.00; Farm Hirs. 53.00-60.00; Farm Bulls 98.00-120.00; Light Calves 43.00-53.00; Weak Calves 42.00-Down. Lambs- Few Offered. Med. & Good \$64.00-68.00.

STOCKER STEERS- 300-550 lbs. Light Run Due To Cold Weather. Good \$50.00-55.00; Medium 45.00-49.00; Culls 44.00-Down. Steers- 600-850 lbs. Good \$50.00-52.00; Medium 45.00-49.00. Heifers (All Weights) Good \$44.00-49.00; Medium 39.00-43.00. Springing Heifers- To \$685.00. Pigs, Hd. \$2.00 Higher. 20-35 lbs. \$14.00-29.00; 40-80 lbs. 30.00-45.00. Shoats By Lb. \$36.00-40.00. Slaughter Hogs \$1.00 Higher. 230-260 lb. \$44.10-45.50; 290-325 lb. 43.00-47.00. Sows 400-600 lb. \$32.00-38.00. Hatfield Top \$45.50 and 274 Hogs Sold.

"Snow Sales" are smaller but "demand is good" when the weather is bad over a large area and livestock sales are smaller, prices are usually good for butcher classes. Packers still need their dairy quota to slaughter & they are willing to pay to get it. That's how it was this week on butcher cattle, calves, and hogs. Machinery sale Sat. March 29th at Four States. (Farm machinery, tractors, trucks, tools, hay, straw, lumber & firewood.) To get your items in the advertisement, contact sale manager Floyd Davis (301-233-9761.)

LOUIS LYONS & SON

Consign your cattle and hogs, feeder pigs & calves to Louis Lyons & Son. They offer choice service, excellent sorting & marketing of your livestock.

Charles Diller, Manager
Phone 394-7915

Burnell Siegrist - Buyer & Seller
Phone 626-8653

Experienced Personnel

Immediate Weighing

VINTAGE SALES STABLES, INC.

Paradise, PA

Was incorporated March, 1953, 33 years ago. March 4, 1986 will be 10 years under the management of L. Robert Frame, so come help celebrate!

100 Head of Feeder Cattle will be sold at 1:30 P.M.
Plus our usual run of slaughter cattle & calves.

For information phone
717-442-4181, 717-768-8204,
215-458-8518

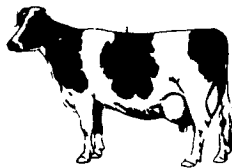
TOP PRICES FOR DOWN, CRIPPLED AND AS IS COWS, BULLS & STEERS

Slaughtered Under Federal Inspection
Paid On Dressed Weight

Tom Mulvaney
Livestock Trucking
(201) 454-4247

HANDLING:
Warren, Hunterdon, Sussex
And Somerset Counties, New Jersey

IN PENNA:
Northampton,
Bucks And
Lehigh Counties



Custom Liquid Manure Hauling
300 Gal. Tank Truck
Lancaster & York Counties

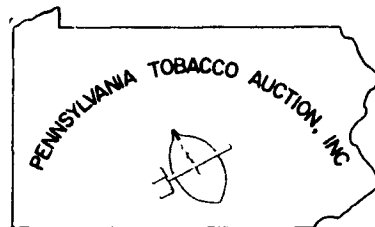
Don Groff
Holtwood, Pa
717/284-2580

CRIPPLED AND DISABLED

Cows, Steers & Bulls
For Slaughter Under
USDA Inspection
Call Wayne Taylor
717-866-6289
215-286-9400

Lebanon, Berks, Lancaster & Chester Counties

WE WORK FOR THE FARMER!



WE WORK FOR THE FARMER!

ATTENTION TOBACCO FARMERS
OFFERING A FAIRER AND MORE COMPETITIVE WAY TO MARKET YOUR TOBACCO

We Thank All Farmers And All Buyers For Supporting Our New Tobacco Marketing Method In Pennsylvania:
AUCTION!

TYPE 609: We are scheduling Type 609 sales for Monday, February 24, 1986. We would appreciate if any farmers who intend to use the auction to market their 609 tobacco after the Monday 24th sale would call and indicate how much tobacco they have. We will then schedule one final clean up sale the first week of March.

TYPE 41: We are scheduling a Type 41 sales for Monday, February 24, Wed., Feb. 26 and Friday, Feb. 28, 1986. We will receive tobacco the day before each sale. We will schedule further Type 41 sales as the market determines. We will finish up the first week of March.

Please call for scheduling and please stick to your schedule as closely as possible.

We have certified Type 609 seeds for sale at the auction.

Directions: Sale is held 2 1/4 miles east of Intercourse along Rt. 340 according to the above schedules.

ERIC PROBST GENERAL MANAGER 717-768-7100

Lapp ENERGY FREE DRINKERS

No Gas/No Electric



40 Gallon

Drinkers have a new unique baffled drinking design manufactured from a durable poly product. A 2-hole 40 gallon and a 1-hole 4 gallon for all kinds of livestock, including horses, sheep, pigs, etc.

Manufactured By

SOUDERSBURG MFG.

116 N. Soudersburg Rd., Gordonville, PA 17529

Authorized Dealers

LANCASTER CO. REISTSVILLE AREA

DONALD R. NISSLEY LAPPS
RD #1, Willow Street, PA SHARPENING
(Corner of Rt. 272 S. & SERVICE
Bylerland Church Rd.) RD 2
(717) 786-7654 Myerstown, PA 17067

Dealer Inquiries Invited

SWINE PRODUCTION SALES AND SERVICE

Complete Feeding Programs and Services

Feeding Programs to Meet Your Individual Needs

Computerized Record Keeping System

Providing Veterinarian Service

PA. Toll Free
1-800-468-5524



419 W. High Street
Elizabethtown, PA
17022

Supplying Farm Fresh Feeder Pigs

Marketing and Hedging Services

Marketing of Genesis Breeding Stock

Developing Individual Financial Programs

Direct Dial
(717) 367-1525