

# Alfred State College offers hands-on swine experience for students

ALFRED, N.Y. — The first pigs born at Alfred State College's new swine production facility will go to market in June, six months after birth and with impressive girth.

The porkers, that began arriving in litters in mid-December, debut at about 2½ pounds, according to college farm manager Roy Doane who's doubling as mid-wife/"mothers' helper" at the \$100,000 swine facility that opened last fall.

"By the time our pigs are transported to the packing house, each will weigh about 225 pounds," Doane said. He estimated that some 575 pounds of special feed is consumed per pig, "farrow to finish," to bring the animal to

market weight.

That's not chicken feed, considering that peak population is expected to hit 500 when the facility is fully operable. From the initial four boars and 47 gilts, Alfred's pig population has grown to more than 150 to date, with a

projection of 450 by June.

A far cry from the garbage-eating pigs of cartoon film and fable, Alfred's swine feed on a mixture of corn, oats, alfalfa, and bone meal, "but primarily corn," Doane said "The pig's rate of growth depends on both environmental and nutritional fac-

tors. The swine producer of today has to provide both at a higher level to raise the leaner-quality pork products the consumer is looking for."

Doane and others say the swine production facility is a "model" in the state, since it incorporates such high technology concepts as computer-managed resources and ventilation units to ensure energy efficiency. "Yet, this is typical of what the industry is using as more technology is being used in agriculture," the farm manager commented.

The college believes it is also meeting the needs of many students in animal husbandry who

are interested in knowing more about swine production so they can be more diversified in their farm operations.

The majority of funding for the facility (\$70,000 out of about \$100,000) was from the Educational Foundation of Alfred, Inc., which often assists such instructional support programs. Income from the facility will be used to repay this funding.

Much of the actual construction of the 5,388-square-foot structure was by students enrolled in Alfred's School of Vocational Studies in Wellsville who undertook the project as part of their hands-on educational experience

## U.S. Grain, wheat program explained

WESTMINSTER — An informational meeting on the 1986 Feed Grain, Wheat and Conservation Reserve programs has been scheduled for February 28 at the Agriculture Center in Westminster.

Mrs. Jeannie Miller, Director, Agriculture Stabilization and Conservation Service and Jack Sanders, District Conservationist with the Soil Conservation Service will provide information on the regulations and technical information of the programs, according to County Extension Agent, Stan Fultz.

Following discussion on each program, Dr. George Stevens, Extension Farm Management Specialist from the University of Maryland will analyze the economic consequences of participating in these government programs, said Fultz.

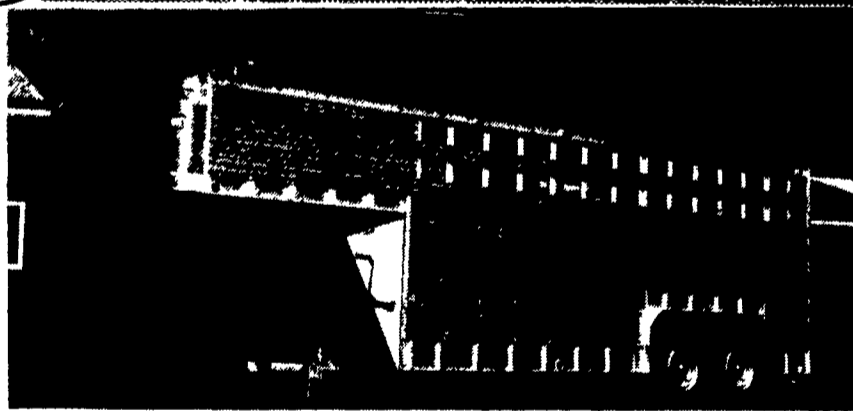
The program is scheduled for 9:30 a.m. to 12:30 p.m.



Pigs in a blanket: Animal Husbandry major Mark Engler holds baby pigs born at Alfred State College's new swine production facility.



## ALUMINUM GOOSENECK TRAILERS



### ATTENTION FARMERS & LIVESTOCK HAULERS:

#### ALUMINUM EBY GOOSENECK TRAILERS, Standard Specifications:

LENGTHS AVAILABLE: 14' to 28' (longer lengths available as option)  
 WIDTHS: 96" Standard - 102" Optional  
 HEIGHT: 6'6" Standard - 7'6" Optional

A versatile, lightweight, Eby aluminum stock trailer is built to provide years of maintenance free service. An Eby trailer is custom built to fit your individual hauling needs - No mass production! We use only quality components and strong alloy aluminum to manufacture what may be the last trailer you'll ever buy.

#### CONSIDER THE FEATURES OF AN EBY ALL-ALUMINUM TRAILER

**LIGHTWEIGHT**  
 Eby stock trailers are 25-35% lighter than comparable steel trailers. Less weight means better fuel mileage or increased payload.

**MAINTENANCE**  
 Eby aluminum trailers won't rust. Welding and painting can cost you dollars in down time and repairs.

**DURABILITY**  
 Eby trailers are built tough. Quality components of 6061 alloy aluminum provide the ruggedness required in a livestock trailer.

For more information on the economical choice in livestock trailers, contact:

### HITCH UP TO THESE GOOD, USED EBY TRAILERS NOW - CALL FOR PRICES

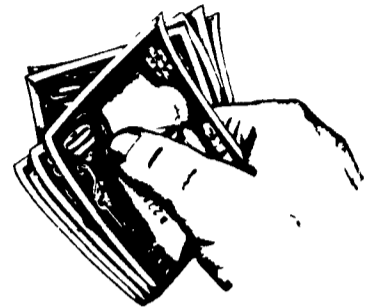
• 24'x8' w/Hyd. Brakes & Deck Rail • 20'x8' w/Hyd. Brakes



## MH EBY, INC.

P. O. Box 127 Blue Ball, PA 17506.  
 717/354-4971

## We're Buying Quality!



Farmer's Cheese Co-Op Now Offers Premiums For Extra Quality Milk. We Want The Best Quality Milk Because Quite Simply, The Best Quality Milk Makes The Best Quality Cheese.

With the use of analytical and computer technology, we will pay you (based on the cheese and cream market) what a hundred pounds of your milk will yield in cheese and cream. Farmer's Cheese Co-Op will be paying its farmers on a bi-monthly basis, plus offering a group hospital insurance.

*Quality Milk Costs More But We Think It's Worth It.*

If you want more for your milk -  
**CALL (412) 946-8729**  
 Ask For Ron or Jack



## Farmer's Cheese Co-Op Ass'n.

P.O. Box 198, New Wilmington, PA 16142 (412) 946-8729

# MF COMPACTS

Big Tractor Features At Small Tractor Prices



MF1040

- Powerful 32 hp diesel engine (27 PTO hp) \*
- Smooth shifting 12 speed transmission
- Standard 3 point linkage with position draft and response control
- Choice of 2 or 4 wheel drive
- Power steering
- 540 rpm PTO
- Optional rear or mid mount mower

MF1030

- Rugged 26 hp diesel engine (23 PTO hp)
- 540 rpm PTO
- Reliable 12 speed transmission
- Standard 3 point linkage with position control (Optional draft control)
- Choice of 2 or 4 wheel drive
- Power steering standard on 4WD model
- Optional mid or rear mount mower

MF1020

- Fuel efficient 21 hp diesel engine (17 PTO hp)
- 540 rpm PTO
- Convenient 12 speed transmission
- Standard 3 point linkage with position control
- 2 or 4 wheel drive
- Optional mid or rear mount mower

MF1010

- Economical 16 hp diesel engine (13 PTO hp)
- 540 rpm PTO
- Smooth shifting 6 speed transmission
- Standard 3 point linkage
- Choice of 2 or 4 wheel drive
- Optional mid or rear mount mower



### NEW SHIPMENT ARRIVED

For a great deal on a great compact tractor, stop in and see us today.

## "SERVICE IS OUR MOTTO" LAWN CARE OF PA.

Sales & Service  
 1 Mi. North of Martindale on Grist Mill Rd., Martindale, PA 17549  
**(215) 445-4541**

**HOURS:**  
 Mon., Thurs., Fri  
 8 AM-8 PM  
 Tues. & Wed.  
 8 AM-5:30 PM  
 Sat. 8 AM-2 PM

*"A Little Out Of The Way... But A Lot Less To Pay!"*