

Aerial photos available from U.S. Geological Survey

RESTON, VA - People who want to see what Pennsylvania looks like from 40,000 feet in the air can do so by using photographs from the National High Altitude Photography program coordinated by the U.S. Geological Survey.

High-altitude photographs produced under the NHAP program and available to the public from the USGS clearly depict, in either color-infrared or black-and-white, 90 percent of the state's 45,333 square miles of land and water areas. Each color-infrared photo shows an area of

about 68 square miles and each black-and-white photo depicts about 130 square miles. Even from 40,000 feet, features as small as houses and boats are distinguished because of the quality and high resolution of the NHAP photographs, said John

Wood, chief of the National Cartographic Information Center at the USGS National Center in Reston, Va.

Larger features such as airfields, parks, large buildings, highways, lakes and streams are easily identifiable. For example, the NHAP photo of the Pittsburgh area clearly shows Point State Park, the Civic Arena and Three Rivers Stadium.

On the color-infrared photos, areas of healthy vegetation such as forests, swamps, irrigated croplands and urban parks appear in red, while areas of sparse or no vegetation appear in shades of blue, gray and brown. Bodies of water, as in conventional color photographs, range from light blue to black.

Wood said that under the multi-agency cooperative NHAP program, more than 87 percent of the area in the 48 conterminous states has been photographed, and complete coverage of the 48 states is expected by the end of 1986. Federal agencies that contribute to the program include the departments of Agriculture, Defense, Commerce and Interior and the Tennessee Valley Authority.

The high quality of NHAP photographs is the result of exposing film in precision aerial cameras during near-optimum weather and seasonal conditions, plus the application of stringent inspection and processing procedures before the USGS accepts the photographs from aerial surveying and mapping contractors.

Photographs produced under the program are intended primarily for mapping, scientific research, and resource and land-use planning purposes, but Wood said they can also appeal to people who want high-altitude views of their homes, farms, neighborhoods or other

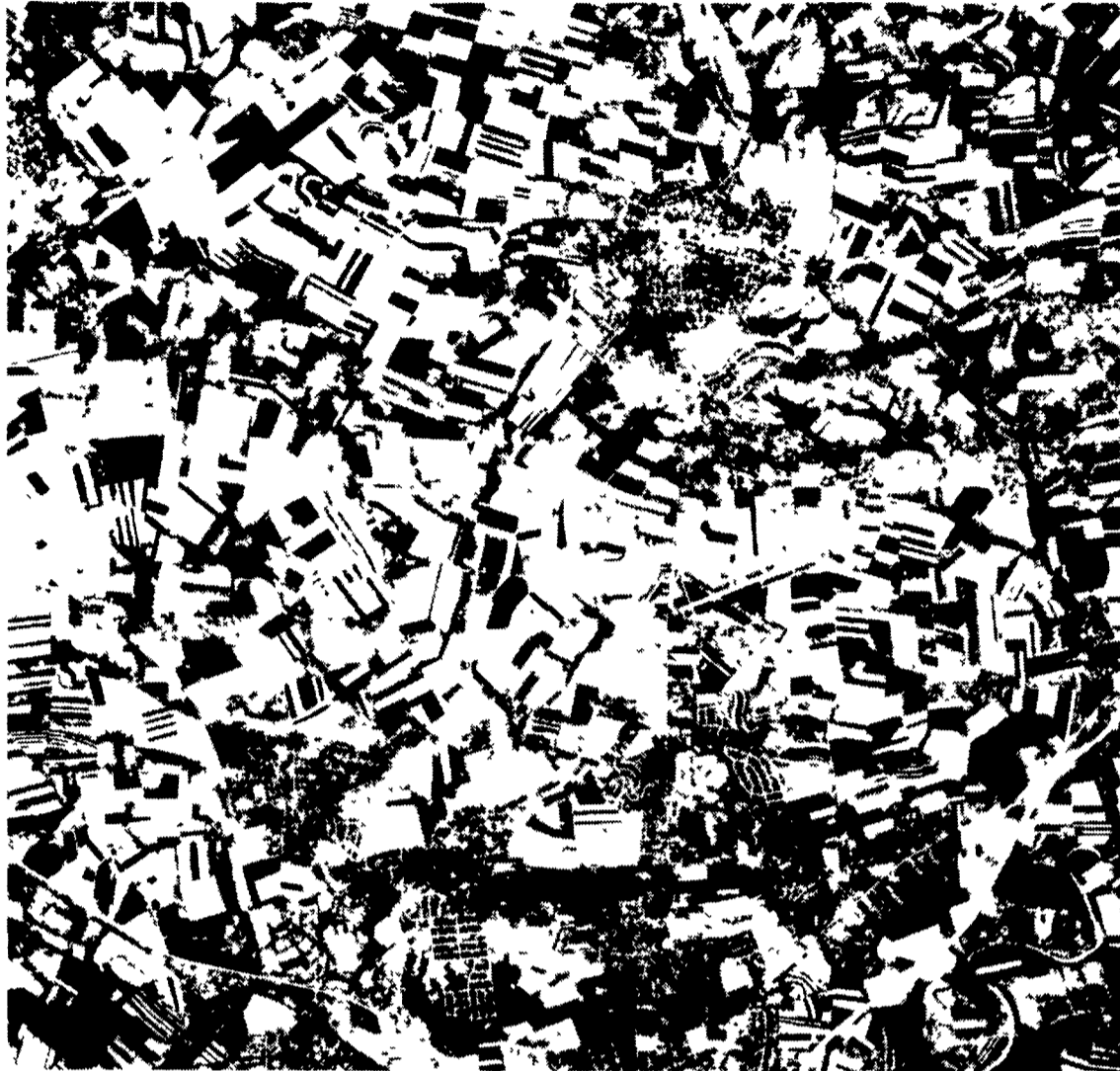
favorite spots. The photographs can be useful additions to map collections and make attractive wall hangings.

Prints of the high-altitude photographs are available in standard 9-by-9-inch size, with enlargements available in sizes ranging up to 36-by-36 inches. Costs are \$5 for a 9-by-9-inch black-and-white print, \$15 for a 9-by-9-inch color-infrared print, and up to \$70 for a 36-by-36-inch color-infrared enlargement. Also available are photographic prints enlarged to 1:24,000 scale to match 1:24,000-scale topographic maps for the same areas. Costs are \$25 for a black-and-white print and \$50 for a color-infrared print.

The black-and-white and color-infrared photographs are taken at an altitude of 40,000 feet above the ground with two 9-by-9-inch-format aerial cameras. A 6-inch focal-length camera loaded with black-and-white film produces photographs at a scale of 1:80,000 (one inch on a photograph represents about 1.25 miles on the ground). Photographs from an 8.25-inch focal-length camera loaded with color-infrared film are at a scale of 1:58,000 (one inch represents almost 1 mile).

A schedule of prices and assistance in ordering NHAP black-and-white and color-infrared photographs for areas in Pennsylvania are available from the NCIC, U.S. Geological Survey, 507-A National Center, Reston, Va 22092, telephone 703-860-6336. Mail orders must be accompanied by checks or money orders payable to the Department of the Interior-USGS.

The NCIC also has information on other high-altitude photographs and maps of Pennsylvania at various scales, as well as other cartographic data pertaining to the state.



An aerial photo of the area between Lititz and Lancaster.

TIRED OF BEING OVERCHARGED? SAVE

Battery Warehouse

"Brand New Batteries Are All We Sell"

FARM • AUTO • TRUCK • MARINE & R.V. • MOTORCYCLE • COMMERCIAL

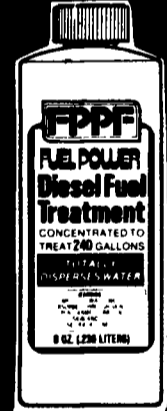
GROUP 1-6 VOLT \$ 35⁹⁵ W EXCH AND COUPON	GROUP 30H \$ 69⁹⁵ W EXCH AND COUPON	GARDEN TRACTOR BATTERIES \$ 34⁹⁵ W EXCH AND COUPON
GROUP 24/24F \$ 29⁹⁵ W EXCH AND COUPON	GROUP 3EE \$ 49⁹⁵ W EXCH AND COUPON	GROUP 4DLT \$ 94⁹⁵ W EXCH

Serving You In Over 90 Locations

COMPARE OUR QUALITY, POWER, WARRANTY and LOW PRICES.
YOU'LL SEE WHY THOUSANDS TRUST THE #1 DISCOUNT BATTERY STORE

Battery Warehouse

SINKING SPRING (215) 777-5284	HARRISBURG (717) 652-0565	LANCASTER (717) 392-8484	CHAMBERSBURG (717) 264-7414	WHITEHALL (215) 433-5188	WILKES BARRE (717) 824-2995	FREDERICK MD (301) 662-2288
TEMPLE (215) 921-0246	MECHANICSBURG (717) 697-4414	ALTOONA (814) 942-2888	LANSHORNE (215) 757-8300	MONTGOMERYVILLE (215) 368-0168	DOVER, DE (302) 674-4020	BELAIR MD (301) 879-4323
BETHLEHEM (215) 867-6077	NEW OXFORD (717) 624-4681	WESTMINSTER, MD (301) 876-7188	HAGERSTOWN, MD (301) 791-7780	HAZLETON (717) 455-6600	SOMERSET (814) 443-1133	ALL LOCATIONS ARE IN PA UNLESS OTHERWISE NOTED



THE NUMBER ONE YEAR ROUND BEST SELLER

AUTO/TRUCK DIESEL TREATMENT totally disperses water.

FPPF


It eliminates water even better than water separators. It also keeps injectors clean, improves engine efficiency, and contains no harmful alcohol.

Use it in every tankful all year 'round.

IT COSTS SO LITTLE TO PROTECT SO MUCH.

Use POLAR POWER from Dec. thru Feb. to prevent waxing and gelling. It also disperses water. GAS TREATMENT treats leaded & unleaded gasoline. Totally disperses water and increases mileage.

DIESEL FUEL INJECTION & TURBO CHARGER SPECIALIST



GAS Treatment

MILLER DIESEL INC.

6030 Jonestown Rd., Harrisburg, Pa. 17112
717-545-5931 Interstate 81 Exit 26

DIESEL TUNE-UP AVAILABLE
Call for Appointment

KING Construction Co.

DESIGNERS & BUILDERS OF ALL TYPES OF FARM & COMMERCIAL BUILDINGS



WE SPECIALIZE IN HORSE BARN & POULTRY BUILDINGS

King Construction Co.

Box 166, RD#2
New Holland, PA 17557
(717) 354-4740