

TANKS FOR SALE

Rotec Agri-tanks, all shapes & sizes. Strong one-piece, seamless polyethylene w/ultra-violet inhibitors, super sun & weather resistant, 25-2250 gal.

Factory to Farm Prices
Some Used tanks, 265 gal, \$100
Also pumps, hoses, and fittings.

"Used Irrigation Pipe, pumps & supplies delivered to your farm. 4, 5, & 6" In Stock"

FREY'S GARAGE
Chambersburg, Pa. 17201
717-264-3515
264-7492

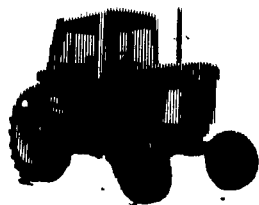
FARM EQUIPMENT FOR SALE:

Propane Trojan Loader Model B300 w/potato Bucket, needs motor, \$400

Haines Potato Seed Cutter (2-4-6 cut), excellent condition, \$2,800.

INSTO Farm Grain Moisture Tester, Cost \$245. Will Sell for \$150

716-322-9022



NEW EQUIPMENT

5100 Grain Drill, 16x7
335 Running Gear 20,000 lbs.

515 5 Furrow Plow, 18"
86 Rake
15 Baler Thrower

NEW TRACTORS

244-Turf Tires
254-Turf Tires

USED TRACTORS

Cub Cadet 682 w/44" mower

Cub Cadet 1650 w/50" mower

Int. 364D

Farmall H
284D 161 hrs.

Farmall BN w/mower



LAMB'S FARM MACHINERY
Thorndale, PA
Phone 215-269-2676



NEW FORD TRACTORS & EQUIPMENT

TW5 105 PT HP
7710 86 PTO HP
4610 FWD 52 PTO HP

3910 42 PTO HP
1910 28.5 PTO HP
1210 16 gross HP

Farmhand Hawk Bilt 217 Manure Spreader

Ford 240 Transport
Disc 10'3" Cut

Specials on Ford 930 Rear Mount Mowers And

AMCO 17 Series Disks
Call For Prices

Myers Forage Boxes

300 & 500 Gal. Century Spreaders Available For Immediate Delivery

USED EQUIPMENT
Leyland 134 w/ 3 pt. Mower
710 Combine For NI Uni System

Hawk Bilt Spreader 2155 Completely Re-built

Ford 5000 Light Use Good Condition

Ford 6700 Tractor Ex. Cond. Low Hours

TYE 80" No Till Drill Rental Available

CUMBERLAND VALLEY CO-OP
7 W. Orange St.
Shippensburg, Pa.
717/532-7811

JD 4230
Case 730
AC 200
AC D21
AC 7030
JD 3020 Gas

JD 4020
JD 4040 w/Cab
AC WD45
Case 1210 4 WD w/Loader
IH 986

USED COMBINES

AC M2 4 Row Head 15' Platform
AC F2

MF 300 13 ft. Platform & Cab
JD 6620 Side Hill 6 Row Corn Head, 15' Platform

SPECIAL SAVINGS ON ALL NEW & USED FARM EQUIPMENT - PLUS FREE FINANCE UNTIL USE SEASON

UNIONTOWN FARM EQUIPMENT

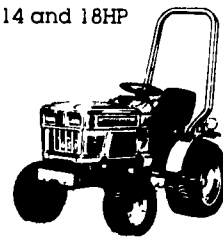
Box 1030 Rt. 119N
Uniontown, PA 15401
Call 412-437-9851

YANMAR

More Than You Expect

More than you expect is what makes a Yanmar so special. And Yanmar delivers more than you expect.

14 and 18HP



- Choose Shuttle Power Shift that lets you shift on the go without clutching
- Choose 2 or 4 wheel drive
- Discover Yanmar's smooth fuel squeezing diesel performance

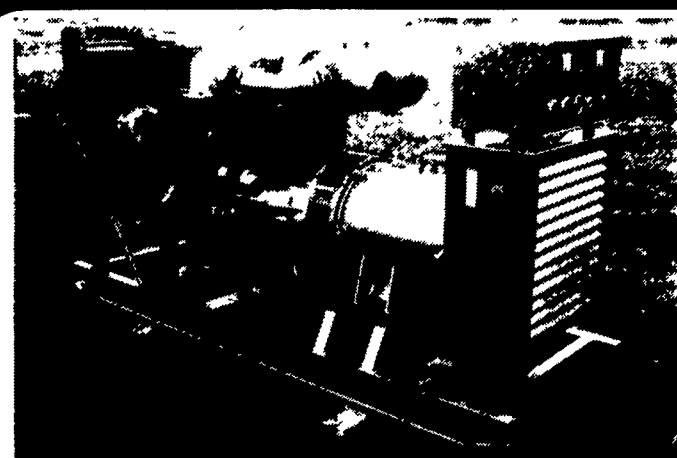
Test drive a Yanmar Today and find out why Yanmar delivers more than you expect!



Tractors and Implements More Than You Expect

Yanmar 14 and 18hp utility tractors really deliver

MARTIN HARDWARE & EQUIPMENT CO. INC.
Rt 501, 1 1/2 Miles South of Schaefferstown PA
PHONE (717) 949-6817
OPEN Mon-Fri 8-8, Wed 8-12, Sat 8-5



AUTHORIZED ISUZU DEALER

Complete Generator Systems Engineered To Your Specifications. Powered By Isuzu, Detroit, White, and Others.

Manufactured By:

Parts - Sales - Service

MARTIN ELECTRIC PLANTS

Pleasant Valley Rd. Ephrata, PA 17522 (717) 733-7968



WISCONSIN ENGINES SALES & SERVICE

USED EQUIPMENT

- NH 752 Crimper
- NH 456 Mower, New \$2450.00
- NH 456 Mower, Used
- Brillion Cultipackers, 9 Ft. & 10 Ft.
- Int. 100 Balance Mower
- JD 660 Rake w/Dolly Wheels, Like New \$2100.00
- MC 7E Rotary Scythe
- NI 206 Manure Spreader

USED TRACTORS

- Case 930 Comfort King 3 Pt. \$3900.00
- IH 560 Gas, W.F. \$2650.00
- AC D19 Gas, Good Cond. \$3300.00
- JD 330 \$2250.00
- AC XT190 Diesel \$4600.00
- AC XT190 Gas \$3600.00

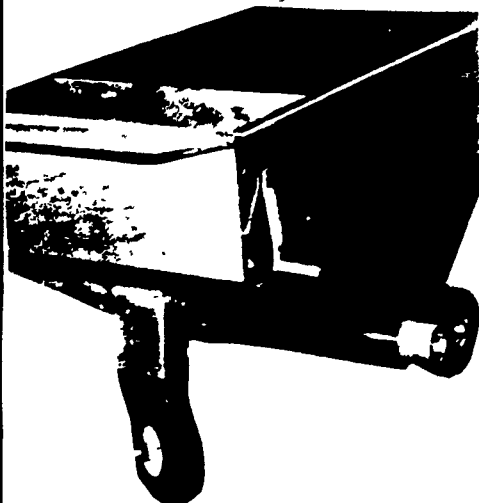


MILLER'S REPAIR

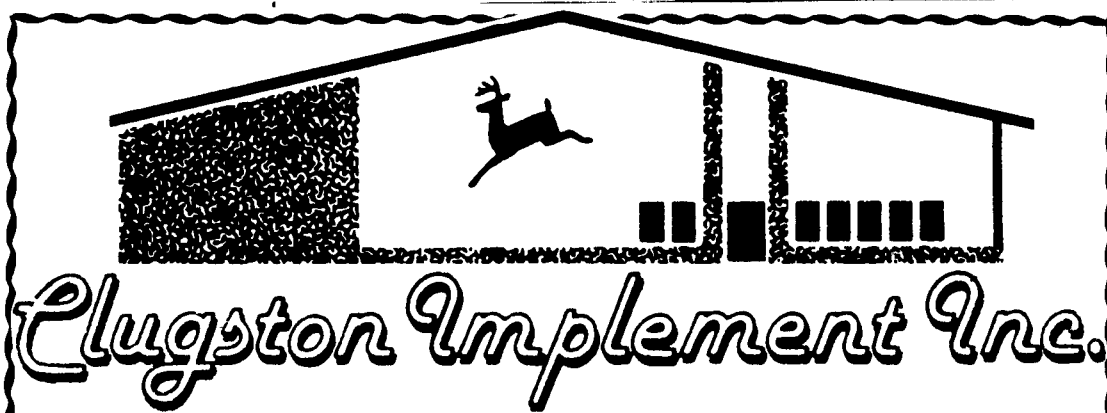
1 Mile North of Bird In Hand
8 Miles East of Lancaster

RD 1, Bird in Hand, PA Ph 717-656-6109

Dairyman



- This Feed Cart Will Automatically weigh your grain
- Cuts Feeding Time By 50%
- Also Available In Double Discharge For Split Cart Rations
- For More Information Or Free Trials, Call **717-656-9596**



Chambersburg, PA 17201

OPEN HOUSE and FARMING FRONTIERS
Thursday, February 27, 1986
9:30 a.m. — 3:30 p.m.

10% Off On All Parts & Accessories from February 24 thru February 28.

Pancakes & Sausage

- * Farming Frontier Film Will Be Running Continuously
- * Company Reps Will Be On Hand

I-81, Exit 8
3213 Black Gap Rd.
Chambersburg, PA 17201



717-263-4103
717-532-6951