



Livestock market and auction news

Shenandoah Valley Livestock

Harrisonburg, Va.
Saturday, Feb. 8

Report supplied by auction

FEEDER CATTLE: STEERS:
M&L-1 300-500 lbs. Few 63.00; 500-700 lbs. Few 59.50-60.50; 700-1000 lbs. 52.00-55.00; Holstein- 300-1000 lbs. 45.00-48.00. S-L&M&L-2 500-700 lbs. 55.00-58.00; 700-1000 lbs. 50.00-54.75;
FEEDER BULLS: M&L-1 300-500 lbs. Few 60.50-63.00.
HEIFERS: M&L-1 300-500 lbs. 51.00-56.00; 500-700 lbs. 45.00-47.50;

S-L&M&L-2 300-500 lbs. 53.00-54.00.
STOCK COWS: Baby Calves 75.00-107.00.
SLAUGHTER COWS: Trend Steady to 1.00 Lower. Utility & Commercial 2-4 31.75-36.75, Few 40.75-41.25; Canner & Cutters 1-3 27.50-31.00.
SLAUGHTER BULLS: 1 & 2. 43.00-46.00.
HOGS: Sows 1-3 38.00-43.50; Boars 1 @ 29.00.
SLAUGHTER CALVES: Choice & Prime Few 80.00-88.00.

54.00; 700-900 lbs. 44.00-49.00. Large 1 300-500 lbs. 51.50-63.00; 500-700 lbs. 50.00-55.00. Small 1 300-500 lbs. 45.00-54.00; 500-700 lbs. 42.50-51.50.
Northern, Va.
Feb. 6-12, 1986

STEERS: Medium 1 300-500 lbs. 58.00-68.50; 500-700 lbs. 54.00-64.50; 700-1000 lbs. 50.00-58.85. Large 1 300-500 lbs. 57.00; 500-700 lbs. 56.50-64.25; 700-1000 lbs. 52.00-57.50. Small 1 300-500 lbs. 52.00-58.00; 500-700 lbs. 52.50-60.00; 700-1000 lbs. 54.00.
HEIFERS: Medium 1 300-500 lbs. 50.00-60.00; 500-700 lbs. 45.00-55.00. Large 1 300-500 lbs. 48.00-56.00. Small 1 300-500 lbs. 46.00-52.00; 500-700 lbs. 46.50.

Virginia Auction Summary

Feb. 6-12, 1986

Report supplied by VDA
South & Southwest Va.

Receipts: 2,954.
Trend: Mixed 2.00 higher to 2.00 lower.

STEERS: Medium 1 300-500 lbs. 60.00-72.50; 500-700 lbs. 55.00-68.50; 700-1000 lbs. 50.00-58.25. Large 1 300-500 lbs. 65.50-73.00; 500-700 lbs. 57.50-64.00; 700-1000 lbs. 56.00-57.00. Small 1 300-500 lbs. 53.00-66.00; 500-700 lbs. 49.50-59.00.
HEIFERS: Medium 1 300-500 lbs. 51.25-65.50, 500-700 lbs. 47.00-

Westminster Livestock Auction

Hagerstown, Md.
Tuesday, Feb. 4

Report supplied by auction

SLAUGHTER COWS: Steady With Last Week. High Yield \$39.50-40.75; Utility 36.00-39.50; Canners 32.00-36.00; Shelly 31.00-Down. Bulls- Returning For Service 900-1100 lbs. 43.50-44.50. Fed Steers-Few Choice Hereford 1100-1200 lb \$55.75-56.50; 1 Low Choice 1450 lb.

The 11th Annual Spring Machinery Sale will be held Saturday March 15th. It will be managed by Robert Hooper. To advertise items for this sale contact Mr. Hooper at (301) 473-8521.

FIRST SPECIAL FEEDER CATTLE SALE WILL BE HELD TUESDAY, MARCH 4th at 7:00 P.M.

New Holland Dairy

New Holland Sales Stables
Wednesday, Feb. 12

Report supplied by auction
Reported receipts of 100 cows, 80 heifers, and 0 bulls.

Market lower.
Load of PA fresh cows, 560 00-950.00.
Load of PA fresh cows, 650 00-1025.00.
Load of Canada fresh cows, 725.00-1125.00, springers 685 00-1075.00.
Load of PA fresh cows, 700 00-925.00.
Load of Canada fresh cows, 275.00-960.00, springers 625 00-800 00.
Herd of 26 head all stage cows, 350 00-575.00.
Locally consigned cows 450 00-785.00.
Springing heifers 475.00-825 00
Open heifers 250 00-375.00

Custom Liquid
Manure Hauling
300 Gal. Tank
Truck
Lancaster &
York Counties

Don Groff
Holtwood, Pa.

717/284-2580

LOUIS LYONS & SON

Consign your cattle and hogs, feeder pigs & calves to Louis Lyons & Son. They offer choice service, excellent sorting & marketing of your livestock.

Charles Diller, Manager

Phone 394-7915

Burnell Siegrist - Buyer & Seller

Phone 626-8653

Experienced
Personnel

Immediate
Weighing

TOP PRICES FOR DOWN, CRIPPLED AND AS IS COWS, BULLS & STEERS

Slaughtered Under
Federal Inspection
Paid On Dressed Weight

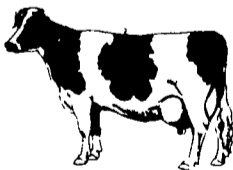
Tom Mulvaney
Livestock Trucking
(201) 454-4247

HANDLING:

Warren, Hunterdon, Sussex
And Somerset Counties, New Jersey

IN PENNA:

Northampton,
Bucks And
Lehigh Counties



DEALERS WANTED WHOLE COTTON SEED AND PEANUT HULLS NAAMAN EBERLY

Paradise, PA
717-687-0990
717-299-3001

DEALERS WANTED

Green Dragon Livestock Sales

Location: Ephrata RD 4. 1
mile N. on North State St.,
Ephrata.

COWS COWS COWS SALE EVERY FRIDAY

Lots of good Northern Feeder
& Stockers. Slaughter Cows
- Bull Steer, Veal-lamb

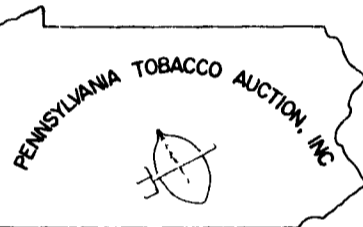
11:00 A.M.-Beef Sale 200-300 each week.
1:00 P.M.-Dairy Sale.
7:00 P.M.-Small Animal Sale.

For Special Sales and Herd Dispersals
on farm or at our barn or other market
information call: Office 717-733-2444,
Home 717-838-4318.

WALTER H. RISSER, Proprietor

All out of state and new buyers must have
cash or certified check or current letter of
credit from bank.

WE WORK
FOR THE
FARMER!



WE WORK
FOR THE
FARMER!

ATTENTION TOBACCO FARMERS OFFERING A FAIRER AND MORE COMPETITIVE WAY TO MARKET YOUR TOBACCO

We Thank All Farmers And All Buyers For
Supporting Our New Tobacco Marketing Method
In Pennsylvania:
AUCTION!

TYPE 609: We are scheduling Type 609 sales for Monday, February 17, 1986.

TYPE 41: We are scheduling a Type 41 sale for Wednesday, February 19, 1986 and we will schedule Type 41 sales thereafter according to market needs. For the auction we would recommend that you do not cover your bales with paper.

We will not be receiving any tobacco on Thursday, February 20, 1986 or Friday, February 21, 1986.

Please call for scheduling and please stick to your schedule as closely as possible. It is important that you look at market averages when you use the auction for selling your tobacco. You are not always going to hit the highest market or the lowest market prices.

We have certified Type 609 seeds for sale at the auction.

Directions: Sale is held 2 1/2 miles east of Intercourse along Rt. 340 every Monday, Wednesday and Friday.

ERIC PROBST GENERAL MANAGER 717-768-7100

CRIPPLED AND DISABLED

Cows, Steers & Bulls
For Slaughter Under
USDA Inspection

Call Wayne Taylor
717-866-6289
215-286-9400

Lebanon, Berks, Lancaster
& Chester Counties

SWINE PRODUCTION SALES AND SERVICE

Complete Feeding
Programs and Services

Feeding Programs to
Meet Your Individual
Needs

Computerized
Record Keeping
System

Providing Veterinarian
Service

PA. Toll Free
1-800-468-5524



419 W. High Street
Elizabethtown, PA
17022

Supplying Farm Fresh
Feeder Pigs

Marketing and Hedging
Services

Marketing of Genesis
Breeding Stock

Developing Individual
Financial Programs

Direct Dial
(717) 367-1525