

Livestock market and auction news

Central U.S. Carlot

Beef Report

Wednesday, Feb. 12

Report supplied by USDA

Central U.S. Carlot Beef Report Includes The Major Production Areas In The Midwest, Texas, And Oklahoma. As Of 4:00 P.M.

Compared to Tuesday's 4:00 P.M. report, Choice 3 steer and heifer carcasses \$2.00 lower, YG-4's steady and good heifers \$1.00-2.00 lower. Demand and trading light to moderate at the lower price levels on moderate supplies.

Sales reported on 42 loads of steer and heifer carcasses.

Steer Carcasses:

16 Loads

FOB Omaha Basis

Choice 3 600-900 lbs. 86.00; Choice 4 600-900 lbs. 76.00; Choice 2-3 lbs. 600-900 lbs. 79.50-80.00 (Hols Type); Good 2-3 600-900 lbs. 75.50-78.50 (Hols Type).

Heifer Carcasses:

26 Loads

Choice 3 550-700 lbs. 84.00-85.00,

late 84.00; Choice 4 500-700 lbs. 76.00; Good 2-3 550-700 lbs. 77.00-78.00.

Steer and Heifer

Primal Cuts

16 Loads

FOB Omaha Basis

Hinds (H) 120-170 lbs. 100.00; Fores 130-210 lbs. 75.00.

Cow Carcasses:

13 Loads

Eastern Texas and Oklahoma: Prices Steady to \$1.00 Higher.

Sales in Eastern Texas and Oklahoma Production Areas:

Bng Utility 1-3 400&up lbs. 70.50-74.50, mostly 74.00, 73.00-75.50.

Cutter 1-2 350&up lbs. 78.00-79.00, 80.00-81.50.

Eastern Texas and Oklahoma

Bull 1-2 600&up lbs. 81.50.

Boneless Processing Beef

Beef Trimmings

FOB Omaha Basis

124 Loads

90% Chem Lean Fresh 97.00; 75% Chem Lean Fresh 76.00; 50% Chem Lean Fresh 38.00-41.00, bulk 38.00.

Eastern Texas and Oklahoma Production Area:

90% Chem Lean Fresh 100.00-102.00, bulk 100.00; 90% Chem Lean Frozen 101.00; 85% Chem Lean Fresh 93.00; 75% Chem Lean Frozen 75.00; 50% Chem Lean Fresh 41.00.

Four States - Livestock

Hagerstown, Md.

Wednesday, Feb. 5

Report supplied by Auction

SLAUGHTER: Fed Steers- Few Offered. Good \$48.00-50.50; Medium 44.00-47.00. Heifers- None Offered. Cows- Good Run \$1.00 Under Last Week. High Yield \$37.50-38.50; Average 34.00-37.00; Fatty Herf. 29.00-32.00; Shelly 30.00-Down; Big Middle 30.00-33.00. Fat Bulls- Good Run \$1.00 Higher. Good \$45.00-50.50; Medium 40.00-44.00. Veal Calves- No Choice Offered. \$3.00 Lower Mostly On Light Weights. Good \$70.00-77.00; Medium 60.00-69.00; Farm Hfrs. 55.00-59.00; Farm Bulls 85.00-99.00; Light Calves 48.00-54.00; Weak Calves 47.00-Down. Lambs- Few Offered. Medium \$56.00-60.00

Bulls- Choice \$56.00-59.00; Good 50.00-55.00; Medium 45.00-49.00.

STOCKER

STEERS: 300-550 lbs. Very Active \$2.00 Higher. Good \$53.00-57.00; Medium 49.00-52.00; Culls 48.00-Down. Steers- 600-850 lbs. Choice \$56.00-57.00; Good 51.00-55.00; Medium 50.00-Down. Heifers (All Weights)- Choice \$48.00-53.00; Good 43.00-47.00; Medium 38.00-42.00. Stock Beef Cows- \$37.00-45.00; Springing Heifers- To \$800.00. Pigs, Hd.- \$2.00 Higher. 20-35 lbs. \$18.00-24.00; 40-60 lbs. 25.00-39.00. Shoats By Lb. \$38.00-42.50. Slaughter Hogs- Steady. 220-240 lbs. \$44.00-44.75; 260-280 lbs. 43.50-44.00. Sows- Active & Higher. 300-350 lbs. \$39.50-42.50; 500-550 lbs. 35.00-37.75.

Demand For Feeder Cattle Is Stronger And Prices Are Higher All Cattle Weighed When Received At Sale. Open Every Wednesday 8 A.M. Also There Is A Demand For Choice Dry Fed Steers, And Heifers. There Were 380 Hogs Sold Tuesday Morning And The Hatfield Top Price Was \$45.75.

Jersey Shore, Pa.

Thursday, February 6

Report Supplied by Auction

Return to Farm Calf 60.00-105.00. Common Veal 35.00-55.00. Choice Steers 54.00-59.00. Good Steers 49.00-53.00. Common Steers 37.00-48.00. Commercial Cows 36.00-40.00, one 43.00.

Canners-Cutters 33.00-38.00. Shells 25.00-32.00. Choice Heifers 52.00-57.00. Good Heifers 47.00-51.00. Common Heifers 36.00-46.00. Good Feeders 50.00-53.00. Common Feeders 32.00-49.00. Bulls 37.00-53.00. Good Hogs 45.00-46.00. Heavies 43.00-45.00. Sows 33.00-39.50. Roughs 25.00-27.00. Eggs 65.00-79.00.

HAY & STRAW SALE

12:00 Noon

Every Wednesday Westend of Avondale at the intersection of Baltimore Pike and Route 41.

Harvey Z. Martin
215-268-3604
(Office)
215-445-5303
(Residence)

KING'S AUCTION, KIRKWOOD

Hay, Straw and Grain Auction

EVERY TUESDAY

12:00

Located Rt. 472 S miles south of Quarryville or 6 miles north of Oxford at Shrub's Auction House

Lloyd H. Kreider,
Auctioneer
AU-000513L

No out of state checks
ALL TRUCKERS AND
FARMERS WELCOME

HOGS CATTLE FUTURES AND OPTIONS

COMMISSION
\$50.00

Call for information
plus our

FREE

MARKET LETTER
featuring a
Special Situation
Suggestion!

SPECIALIZING IN
COMMODITIES EXCLUSIVELY
IN PENNSYLVANIA
CALL

(800) 322-9274

ALL OTHER AREAS
(800) 523-9388

ALLENTOWN
(215) 821-8111
Rosenthal & Company

2200 Hamilton Street,
Suite 102,
Allentown,
Penna. 18104
Members of All Principal
Commodities Exchanges

ATTENTION FARMERS

The New Way To Market Your Livestock

HATFIELD **MOYER**
PACKING CO. AND PACKING CO.
Will Receive Hogs Will Receive Cattle

At The

BLAIR-BEDFORD
BUYING STATION

RD 1 Martinsburg, Pa.

MONDAYS - Hogs 8 AM to 11:30 AM
Cattle & Calves 8 AM to 3 PM

THURSDAYS - Cattle & Calves
8 AM to 3 PM

- No commission or yardage fees deducted from check
- Livestock weighed and paid for immediately
- You may call our office sale day for prices

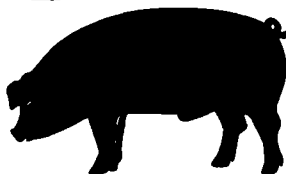
DALE R. HOOVER - Owner

Business 814-793-3077

Residence 814-793-2657



GWALTNEY of SMITHFIELD, LTD.



We will be receiving hogs at
Vintage Sales Stables in Paradise, Pa.
Mondays, Wednesdays, Thursdays
& Fridays from 7 a.m. to 12 noon
717-442-4742

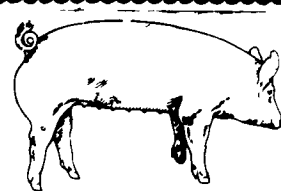
ATTENTION YORK COUNTY HOG PRODUCERS

We will be receiving hogs at
Thomasville, Pa.

Tuesdays 7 a.m. to 12 noon

Futures forward contracts are available.
No commission, paid promptly.

York County - **717-792-9836**



**EMERY'S
BUYING
STATION**

OPEN TO RECEIVE YOUR MARKET HOGS

AT THE GREEN DRAGON MARKET
RD 4, EPHRATA, PA 17522
1 MILE NORTH OF EPHRATA
ON NORTH STATE STREET.

HOURS: MONDAY, TUESDAY, and
WEDNESDAY 6:00 A.M. to 11:30 A.M.
215-458-5677 Residence
717-733-9648 Office

YOU ARE PAID FOR YOUR HOGS IMMEDIATELY

Ken & Lois Emery, Proprietors

MELHORN SALES, SERVICE, TRUCKING CO.

1010 W. Main St., Mount Joy, PA 17552

The only full service company, in this area, to handle the total needs of the poultrymen.

Which Includes:

- DEKALB chicks & started pullets sold by Clay Mumma, Nelson Groff & Harold Mishler.
- Complete loading & unloading of pullets & spent hens.
- New modern dollie equipment to move your pullets fast and efficiently with minimum stress to the pullets

Place Your Confidence In A Full Service Company That Wants To Be Worthy Of Your Business

For More Information Phone:
717-653-1102 or 717-653-2787

Monday - Friday 8 A.M. - 4 P.M. ask for Lynn or Wendy

