

### Public Auction Register

Closing Date Monday 5 00 P M  
of each week's publication

SAT. APR. 5 - Feeder Cattle & Feeder Pigs. Horse Drawn Farm Mach., Hshld. Located RD1, Port Trevorton, PA. Eli & Elizabeth Miller, Owners. Brian D. Imes, Auct.

SAT. APR. 5 - 9AM Annual Spring Consignment Sale at Beaver Run School,

between Exchange and Washingtonville Fraley Auct. Co.

SAT. APR. 5 - HH Goods, Antiques, Tools. Located in village of Georgetown Emma L. Petersheim. Steve & Steve, Jr. Petersheim, Aucts.

SAT. APR. 5 - 9AM 11th Annual Consignment Sale of Farm Mach., Lumber & Bldg. Supplies, Hshld., Antiques, Recreation Vehicles, Trucks, Tractors, Autos, Lawnmowers. Located Nescopeck Twp Vol. Fire Co. No. 1 at Rts. 93 and 239, Nescopeck, PA

SAT. APR. 5 - 9AM Spring Community Sale. Penns Valley Livestock Auction, Centre Hall, PA Ron Gilligan, Auct.

SAT. APR. 5 - 8:30AM Geo. Long will sell Farm

Mach., Tractors, Tools. New Berlin to Middleburg Hwy. Earl Eash, Ken Smith, Aucts. etc. Located 1/2 mi. off the

SAT. APR. 5 - 9:30AM New & Used Farm, Industrial, Lawn & Garden

Eq. Marshall Machinery, Inc., Rt. 652, Honesdale, PA. 717-729-7117.

## PUBLIC AUCTION ANTIQUE AUTOS & PARTS CONSIGNMENT SALE SATURDAY, MARCH 1, 1986 9:00 A.M.

Auction to be held indoors in the heated Exposition Building at the Lebanon Area Fairgrounds, off Route 72 at the corner of Rocherty and Cornwall Roads, South of Lebanon, Lebanon County Pennsylvania.

#### AUTOMOBILES

1924 Dodge RDSTR (Parts Car), 1928 Ford Phaeton (Older Restoration) 1928 Ford AR Sedan (Older Restoration) 1928 Chevrolet Roadster (Rare) 1948 Willys 6-63 SDN Delivery (Hershey Prize Winner), 1955 Dodge Custom Royal SDN - (AACA 1st Place Winner Hershey 1983), 1956 Chevrolet Panel Truck (Prize Winner Clean), 1959 Ford 4DR Hardtop, 1962 Chevrolet Impala Convertible (Prof Restoration), 1962 Ford Sunliner Convertible 1963 Comet Convertible (Good Condition), 1966 Corvair 2DR  
MORE AUTOMOBILES ARE EXPECTED BY SALE TIME

#### PARTS

50 plus early headlights, Lenses, Bulbs Luggage Racks, Trunk Racks Jacks Tire Pumps, 54 Chev Parts, 1946 Ford Foglights 46 Ford Front Floor Pan Front Gravel Shields, Radios (Ford Chev etc), Pair NOS Chev Sedan Delivery Rear Fenders, Pair Early Chevrolet Rear Fenders Grilles (Nash Mercedes Volvo etc) Steering Columns (36 Ford etc) Many pre 1950 Hub caps Nash Metropolitan Parts Franklin Steering Column Box and Wheel Nice 35 Ford P U Seat and back Wiper Motors Fuel Pumps Gaskets Seat Covers Oil Filters, Shop Books, Oil Filler Caps Literature Grease Seals Cowl Lights Taillight Lenses Fan Belts Brake Linings Distributors Fuel Pump Repair Kits Shocks Ignition Points Chrome Moldings Misc New Buick Parts in Original Boxes Over 500 License Plates including early porcelain plates and many more unlisted items

Roger L Myers - Auctioneer  
717-865-4145  
AU-000653-L  
Food By PA DUTCH REGION

Conditions by  
PA DUTCH REGION A.A.C.A.

TERMS: Cash - Personal Checks Accepted only by prior approval - No Bank Drafts accepted. Out-Of-State persons must supply two (2) proper forms of identification.

NOTE Some cars to be offered with reserve For more information call M Leshar 717 274 0602  
PA DUTCH REGION ASSUMES NO LIABILITY-NOT RESPONSIBLE FOR ACCIDENTS

## HOUVALE FARMS 15th YORKSHIRE & YORK-HAMP. PRODUCTION SALE

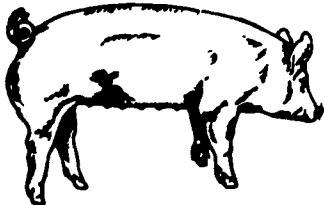
**NOTE: DATE CHANGED  
MARCH 21, 1986**

SALE - 1:00 P.M.

LOCATION: Lebanon Area Fairgrounds, Evergreen Road and Cornwall Road, Rocherty Road East off of Route 72, Lebanon, Pa.

Basics never went out of style: with our herd priorities on Health, Production, Soundness, Mothering Ability, and Rate of Gain. These are the basic keys to a purebred and commercial hog man's profits. When it comes to Raising Pigs - Yorkshires Wrote the Book!

#### YORKSHIRES



Our pen of 4 Boars at Penn State Test Station averaged 2.21 lbs. daily gain: .73 Back fat, 4.66 Loin eye, 62.33% Lean cuts, score of 2 on soundness & underline 112 Index. These pigs were sired by Dallas from the 1983 Type conference.

**60 BRED GILTS--Yorkshires Bred to York & Hamp. Boars also York-Hamp. Crosses Bred to York Boars**

**25 OPEN GILTS**

**20 BOARS--4 of these Boars will be Pure Hamp. Boars**  
All animals will be bled and negative to Pseudorabies and Brucellosis so they can go into any state on sale day

For Catalogue, Write to:

**ELWOOD E. HOUSER**  
2150 QUENTIN RD., LEBANON, PA. 17042  
Phone (717) 272-5798 or (717) 273-2921  
**THIS IS INVESTMENT DAY**  
AUCTIONEER: Col. HARRY H. BACHMAN  
Phone (717) 867-1809

By Order of **BELL TELEPHONE CO. OF PA.**  
Well-Maintained, Multi-Purpose Bldg.  
**LEBANON, PA.**

(Former Bell Communications Center)  
46 S. 8th St. (N/W Cor., Chestnut St.)  
STRATEGICALLY-LOCATED. Heart of Business District. Opp. Post Office & Court House.

## AUCTION

Subject to Confirmation  
ZONED CBD-CENTRAL BUSINESS DISTRICT 19,000 Sq. Ft. 4-Story Concrete/Steel Beam Const. w/Offices, Work Areas, 2,000 Lb. Elevator. Central/Blt.-In AC.

Inspection: Thurs., Feb. 13  
1 to 3 P.M.

SALE On Premises:  
**THURS., FEB. 20**  
at 1 P.M.

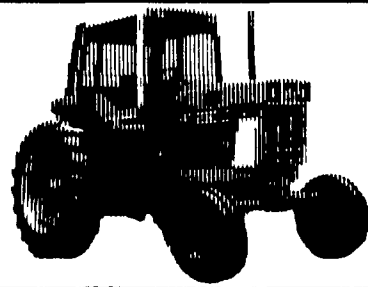
15% Deposit at Sale.  
Request Brochure

*Louis Traiman*  
AUCTION COMPANY

PA License AU-950-L  
Real Estate Brokers - AUCTIONEERS  
1519 Spruce St PHILADELPHIA PA 19102 (215) 545 4500  
NEW JERSEY (609) 541 0099 • WASHINGTON DC (202) 682 3966

## PUBLIC FARM SALE FRIDAY, FEBRUARY 28, 1986 Starting At 9:00 A.M.

To be held on the Robert E. Yarger Farm. Located 3 miles southwest of Paxinos, along blacktop road leading from Rt. 61 to Clark's Poultry Plant, Northumberland County, Pa.  
— SELLING VALUABLE MODERN FARM MACHINERY —



#### 8 Tractors—In Good Repair

Steiger Wildcat 210-4.W.Drive Diesel Tractor with Cab, 3 Pt.; I-H 1466 Diesel Tractor with Cab, New Rubber, New Turbo, only 2600 hours; I-H 886 Diesel Tractor with Cab; I-H 450 Tractor with Fast Hitch; I-H 400 Tractor with Fast Hitch; I-H 200 with Fast Hitch; Farnall B.N. Tractor with Cultivator; I-H Model H30R Payloader; Wide Front for I-H 450 and Other Tractors.

#### Tillage Tools

Hitch Hiker; Sunflower 23' Disc; Sunflower 21' Chisel Plow; Extension Hitch for Chisel Plow; Krouse 18' Half Fold Disc; I-H #55 - 13 Shank Chisel Plow; I-H #710 - 4-16 Auto Reset Plow; I-H 4-16 Fast Hitch Plow; 3 Pt. Cultivator.

#### Planting Equipment

I-H 400 Cyclo 6 Row Air Corn Planter.

#### Spraying Equipment & Tanks

Snyder Saddle Tanks with Hydraulic Drive Pump; P.K. 150 gal. 3 Pt. Sprayer with Booms; Welsh 200 gal. 3 Pt. Sprayer; Field Sprayer (as is); 150 gal. Trailing Sprayer; 2 - 8000 gal. Train Tanks; 2 - 5000 gal. Vertical Fertilizer Tanks; Fertilizer Pump with Gas Motor; 24 Hole Squeeze Pump, complete with 2 tanks for grain drill.

#### Haying Equipment

J.D. 1209 Mower Conditioner; I-H 7' Semi-Mt. Mower; N.H. 276 Baler with Thrower; I-H Rake; 2 - 8x16 Wood Rack Bale Wagons with N.H. gears; 6 Ton Wagon Gear.

#### 8000 Plus Bales of

1-2-3 Cutting Alfalfa Hay, and Clover and Timothy Hay - Sold by the Ton

#### Potato & Vegetable Units

16x40 Greenhouse with Solid Ends Metal Frame with Gas Furnace; 2 Row Transplanter; Plastic Layer; 30 Rolls Plastic; 2 Row Potato Planter; 1 Horse Cultivator; 10,000 Jiffy Pots; Plastic Trays; New Gould 110V Portable water Pump; Irrigation Pipe and P.T.O. Pump (covers 5 acres).

#### Over-the-Road Truck & Trailers

1981 Series Mack Tractor with Twin Screw, 10 Spd. Trans., Wet Line; 1974 Hill 28' Tandem Axle Dump trailer with 60" Sides and 3-Way Tailgate; 1973 Ti Brook Tandem Axle Dump Trailer with 28' Frame and 26' Box; 1968 Parker 24' Tandem Axle Aluminum Dump Trailer.

#### Miscellaneous Equipment

12x40 House Trailer; Single and Double Axle Snowmobile Trailers; Extra Heavy Duty 14' - 3 Pt. Snow Plow; Extra Heavy Duty 12' - 3 Pt. Blade for 200 h.p. Tractor; Cylinder Type Belt Drive Corn Sheller; Antique 2 Hole Corn Sheller; 21' Cardinal Elevator; Several Heated Single and Double Cattle Waterers; 900 bu. Grain Bin; 300 bu. Feed Bin; Rino #900 - 3 Pt. Blade; Allied 28' Grain Auger; 8x14 Tandem Axle Trailer with 12,000 lb. Capacity and Ball Hitch; 2 - 1000 Fuel Tanks with Pumps; 8 h.p. B&S Gas Motor with Reduction Drive; 10 Gas Chick Brooders; Oak 6x8x8' and 2x8x10' Creosoted Posts; 2 New Garage Door Openers; 10-plus 4x4 Portable Tables: 1/2" and 5/8" Link Log Chains; New 3/16" Link Chain; 1 Roll #60 Roller Chain; 20 Rolls of Barbed Wire; Chain Binders.

#### Tools & Miscellaneous Items

Kellog Vertical Tank Air Compressor; Electric Welder; Acetylene Brazing and Cutting Outfit; Drill Press; Several Vises; Bench Grinder; Air Grease Gun; 3/8 and 1/2 h.p. Electric Drills, Drill Bit Sets; Impact Wrenches; Snap-On Tool Box; Gear Puller; Set of Box and Open End Wrenches; New 21 Piece 1" Drive Socket Set with Ratchet and Breaker Bar; Special Tools and Gauges; Heavy Duty Electric Steel Saw; Hand Tools; 2 Bolt Cabinets with All Sizes of New Bolts, Nuts, Flat Washers; Curtis Steel Cabinet with Large Assortment of Farm Shop Needs; 50 Drawer Cabinet with All Sorts of Screws - Sheet Metal Screws; Plus Unlisted Items.

— MOST ITEMS IN GOOD STATE OF REPAIR —

TERMS: CASH

(Must Have I.D. for Buyers Number)

LUNCH

Owner or Auctioneer not responsible in case of accidents.

SALE STARTS WITH TOOLS, ETC

Earl Eash, Auctioneer - #AU000224L  
717-966-2569

Kenneth E. Smith, Auctioneer - #AU000867L  
717-837-3535

For Information  
or Inspection Call:  
**ROBERT E. YARGER**  
RD 1, Paxinos, PA  
717-648-6217