

**Public Auction Register**

Closing Date Monday, 5 00 P M  
of each week's publication

TUES. MAR. 25 - Special  
Spring Feeder Cattle

Consignment Sale  
Carlisle Livestock Market,  
Exit 12 Off I-81, Carlisle,  
PA 717-249-4511

TUES MAR 25 - 9 30AM  
Geo V Seiple & Son  
Annual Public Sale  
Tractors & Farm Eq  
Location RD2, Van Buren  
Rd., Easton, PA Ralph W

Zettlemoyer Auct Co. TUES. MAR. 25 - Hamden,  
Inc NY Harold Kelly

Machinery & Eq Cattle Exchange,  
Dispersal Mged by The DeLancey, NY.

**FARM EQUIPMENT AUCTION**

\*\*\* SAT., MARCH 1, 1986 \*\*\*  
RAIN-SNOW DATE-WED. MARCH 5th 10 a.m.

(7) FORD TRACTORS 2 Ford 8600's w/cabs, (1) w/2000 hrs (1) w/2278 hrs (2) 8600 Fords (1) w/1249 hrs (1) w/1506 hrs (1) Ford 7000 w/1925 hrs (2) Ford 5000's (1) w/1024 hrs (1) w/1205 hrs 4 RW Lockwood Potato Planter 4BT Rollover Ford Plow 12ft White Hydr Disc Utah Potato Harvester Model 445 Frend Sprayer 600 Gal wood tank 24 RW Hydr Boom Irrigation Power units (1) Ford 6 cyl Industrial Gorman Krup (Hi vol) (2) Chrysler units (1) w/hale pump (1) w/Marlow Pump (2) Tow motor fork lifts 3000 lb cap COMPLETE LINE OF POTATO GRADING EQUIP Hallock Grader Hallock Washer w/new donuts Hallock pickin table 21' 18' 14' distributing tables (3) Poly Closers (2) 21' Hallock bag conveyors (1) Rotating Table w/conveyor 10 lb scales approx 14 TRUCKS SOME BULK BODIES SOME ZIGGY BULK BODIES (2) 15' Ziggy bulk bodies (1) 14' Ziggy bulk body 1975 Internat'l Loadstar 1600 ser w/2 speed (2) 1971 Internat'l's w/2 sp 1600 series 1968 GMC 5500 series w/aux 1972 GMC 5500 Diesel 1963 Chevy w/aux series 60 1965 Internat'l series 1800 1970 GMC 6500 series w/aux 1961 GMC 5500 series, 1968 GMC 7500 series 1958 Ford 2 sp axle (2) White diesel trucks (to be sold for parts) Approx 10 Bulk bodies 14 16 1971 Ford 350 12' rack body 500 Gal Alum Spray Tank on wheels Webster 10 ton bulk fertilizer body 12 ton steel fertilizer bulk body Dietz Wietzel seed cutter 30' Rolle Bros Bin loader (2) 23' Singer bin loaders (2) 6' Potato buckets 4 Rw White cultivator 3 Pt Sow Rite spreader 2 Rw Lockwood potato digger JD 10' lime spreader Hallock 9' Bulk body conveyor 19' Potato seed conveyor 30' Ideal fertilizer conveyor 2 Rw Ford cultivators 3 section steel harrows 1000 gal wood water tank Ford 8N Front end loader 34' storage trailer (4) Space heaters Ast szs Hobart Welder on wheels (2) 4 cyl army generators (1) w/wheels Miller 225 amp welder JD Grain Drill (as is) Ass't spare truck tires sets of Dual tires for Ford tractors sm Misc Shop tools spare parts etc for equip many more items too numerous to mention

**SALE LOCATION: BRIDGEHAMPTON, L.I.; across from Caldor's.**  
**DIRECTIONS:** Heading E. on Sunrise Hwy. to CTY Rd. 39 to Montauk Hwy. Make LEFT at Peter Glennon Cadillac Rte. 27 East (Montauk Hwy.) 4 mi. on right watch for auction arrow signs.  
By order of Southampton Produce Dist., Inc.  
Come Early to Register for Bid Number  
Terms: CASH

Jim McBurnie, Auctioneer, (516)727-0542-(516)727-2546  
228 Middle Road,  
Riverhead, LI, NY 11901

**CONSIGNMENT SALE**

MARCH 22, 1986  
9:30 A.M.

FARM EQUIP. - H.H. GOODS  
ANTIQUES - HAY - STRAW

Location - Port Treverton R.D. 1, Snyder Co., Pa. 2 miles N.W. of Rt. 11 & 15 at Kellers Marine & Hilshers General Store. Turn West on Peffer Valley Rd. to McNess Rd. to Susquehanna Menno. Church. Farm next to Church. Look for signs.

RECEIVING EQUIP. MARCH 17 to SALE DAY. ANYTHING SOLD ON COMMISSION. For Advertising Call BAUMAN BROS. (717) 374-1339 or 374-0334 by March 1.

Wolgemuth Auction Service  
Lic. #1036  
Ph. 665-5664

**PUBLIC AUCTION**

MODERN FARM EQUIPMENT;  
TRUCK; JEEP; SLEIGH;  
ANTIQUES

MONDAY, MAR. 10, 1986

at 10 AM

Between Maxatawny & Breinigsville turn S. off Rt. 222 onto Farmington Rd. toward Mertztown approx. 2 1/2 miles, turn left onto Folk Rd., to Mertz Rd., turn R. to Farm, Berks Co., Pa.

TRACTORS: MF 2675 diesel, 3 pt., wf., dbl. outlets, 438 hrs; MF 246 frt. end ldr. w/6' bucket; JD 3020 diesel, syncro, 100 hrs. on recent engine overhaul; Farmall 350, fh & TA.

COMBINE: MF 300 w/10' hume reel, #24 two r w c head.

TILLAGE: Int. 700 3 pt. semi. mtd. 4-16" trip pl; 2 JD AW-11' 2" transport discs; Mohawk 9'-3 pt chisel pl; 12' single roll transport cultipacker Dunham 10' single roll cultipacker, plus 2-4' extensions; JD 10' single roll cultipacker; Brillion 12' transport harrow; JD 10' roller harrow; 14' Hitch Hiker leveler.

PLANTING: JD 494-A four r c planter w/liquid fert. & herbicide; JD Van Brunt 17-7 single disc grain drill.

HAYING: NH 461 haybine; Int. 100-3 pt. 7' mower; English hay tedder; NH 55 rake; NH 69 hayliner baler w/5 hp. engine thrower; 2 Int. wide track wagons w/7' x 14' dump bodies & bale sides; NI 7'x16' bale side wagon; Smoker 24' bale elev; Mayrath 40' bale & c elev. w/5 hp. gas engine.

MISC.: NI 324 two r wide c husker; 16' alum. elev.; Mayrath 21'6" transport auger w/motor; plus asstd. augers; NI #205 three beater manure spreader; Int. #50 four r stalk shredder; Little Giant drag elev. w/engine; NI PTO spinner fert. spreader, 5'x12' two wheel dump trailer; cement mixer w/gas engine; JD #50-3 pt. 150 gal. weed sprayer; NH 352 grinder mixer; (2) 4 & 6 hole Smidley hog s feeders; small around the farm two wheel hog transport trailer; Int. 4 r culti.; 2 pt. to 3 pt. adaptor; fh carrier; 3 pt. equip. Quick Tach adaptor; 1100 gal. poly fert. tank; Marlow & Lancaster fert. transfer pumps; 10' ci. cattle water trough; (5) JD & Int. hyd. cyl's; Lincoln 225 amp. elec. welder; air comp.; anvil; circular saw buck; elec. fencers; cattle hoof trimmer; (2) 300 fuel tanks, one w/elec. pump; 500 lb. platform scale; 1/2" bench elec. drill press; pickup tool box; Artic Cat Ski Booz; 7'x8'-6' high pickup camper w/table & beds & refrig  
TRUCK: 1954 Int. R-170 w/13 1/2' dump body (nice).

JEEP: 1973 V-8 Jeep 4x4 w/Meyer 7' hyd. angle sn pl.

ANTIQUES & YARD FENCE: To be sold at 10:30 AM: Cupboard top dry sink; 3 pc. Oak BRS; Oak dresser; Oak wash stand w/towel bar; 4 blanket chests, 2 are dovetailed; 2 cane seat rockers; scalloped edge marble top table; Empire slant frt. desk w/drawers; pic. frames; lg. bevel edge mirror; Gone w/the Wind light; 6 pc. wash stand set; 2 Log Cabin quilt tops; comforters; home made rag carpet; pic. albums, one w/stand; 1851 & 1871 birth cert.; Singer elec. sew machine; Kenmore wringer washer; china ware; 4'x8' pool table; one horse sleigh w/cushions; approx. 100' ci. & wire yard fence.

TERMS-Cash or Acceptable Check.

For

**RUSSEL & DOROTHY KULP**

Conducted by  
Ralph W. Zettlemoyer  
Auction Co., Inc.  
(215) 395-8084  
Pa. License #AU-001809-L

Refreshments Served

**ANNUAL  
CONSIGNMENT AUCTION**

MONDAY, MARCH 3, 1986  
9:00 A.M.

Located at the Auction Barn in American Corner, Md. on highway 621 between Federalsburg, Md. and Denton, Md.

TRACTORS, COMBINES, TRUCKS,  
TILLAGE EQUIPMENT, LUMBER,  
TOOLS AND OTHER FARM  
RELATED ITEMS.

Partial listing: JD 4010 diesel, JD #400 grain cart, JD #8200-21 tine grain drill, Grain cleaner, Westgo 6 row S-tine cultivator, 1965 Int.-w-15' dump body.

SELLING WITH 3 AUCTIONEERS, FORK LIFT AND LOADING RAMP AVAILABLE.

RECEIVING EQUIPMENT ON FRIDAY, February 28, SAT., MARCH 1, AND UP TO SALE TIME ON MONDAY.

TERMS OF SALE: Cash or Approved Check -w- letter from bank guaranteeing funds.

A. CURTIS ANDREW AUCTION, INC.  
301-479-0756 or 754-8826

**PUBLIC  
AUCTION**

FARM MACHINERY, TRUCK  
& TOOLS

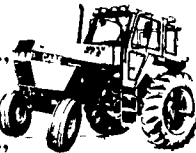
SAT., MARCH 29, 1986

AUCTION TIME: 11:00 A.M.

Location: 795 West Lexington Road, Lititz, Pa., From Lititz (Route 501) Take Lincoln Ave., West Approx. 2 Miles To Lexington Road Turn Left Approx. 1 Mile To Farm On Right. From Manheim Follow Doe Run Rd. East 3 Miles to Erb's Church Turn Right On Lexington Road Approx. 1 Mile To Farm.

CASE 2290 DIESEL  
Cab, Air, Powershift, 1555 Hrs.,  
Radio, Weights

CASE 2090 DIESEL  
Cab, Air, Powershift, 1270 Hrs.,  
Radio, Weights



MASSEY FERGUSON 175 DIESEL  
CASE 1835 B UNI-LOADER

Diesel, 400 Hrs., Only Used 1 1/2 Yrs., Excellent Condition, KNIGHT 410 TANDEM AXLE SPREADER Used 6 Months; NEW HOLLAND 782 FORAGE HARVESTER W/2 Row Corn head, 1000 Rpm, Electric Controls; (2) DION FORAGE WAGONS, 3 Beaters, 10 Ton Gears; (2) John Deere 216 Forage Wagons; New Holland 27 Forage Blower; GEHL NO. 135 GRINDER MIXER JOHN DEERE 7000 4 ROW CORN PLANTER W/Insect.; Speed King 8'x53' Transport Auger, PTO Drive; KRAUSE NO. 1577 CENTER FOLD 18' DISK HARROW W/ Harrowgator; Brillion 9 Tooth Chisel Plow W/Clod Buster; BRADY 16 FT. FIELD CULTIVATOR W/Midwestern Harrow; BETTER BILT 1500 LIQUID SPREADER W/Vacuum Pump; Little Giant 32 Ft Bale Elevator; Zimmerman 300 Gallon 3 Pt Sprayer W/Pump; 11 Ft Cultipacker; Coby 6 Ton Wagon W/Metal Sides; 3 Section Spike Harrow; John Deere 7x13 Grain Drill; (2) Flatbed Wagons

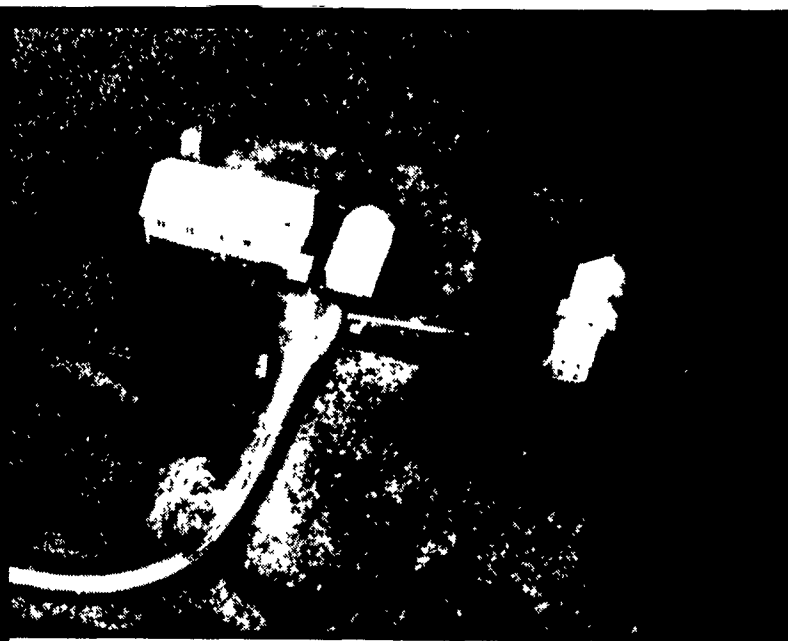
1972 GMC 6500 CATTLE  
TRUCK WITH 20 FT. BODY

Note: Most Of This Equipment Was Purchased New By The Good's And Is In Excellent Condition. If In Need Of Good Clean Late Model Machinery Don't Miss This Auction.

TERMS: Cash Or Good Check Day Of Auction. All Out Of State Buyers Must Have A Bank Letter Of Credit Addressed To This Specific Auction.

Auction by:  
**PAUL T. & VERA E. GOOD**  
717-626-8324

AUCTION CONDUCTED BY:  
J&P AUCTIONS  
PAUL E. MARTIN, AUCT.  
AU-001601-L  
EPHRATA, PA. 717-733-3511  
JOHN D. STAUFFER, AUCT.  
AU-001509-L  
LITITZ, PA. 717-665-5099  
Food By Erb's Sunday School



Ralph L. Eberly Estate

**PUBLIC SALE  
OF VALUABLE REAL ESTATE**

SATURDAY, MARCH 15, 1986  
2 P.M.

Location Millcreek Twp, Lebanon Co., Pa Along the Stricklerstown Road between Cocalico & Newmanstown  
Directions From Schaefferstown, Pa take Rt 419 north to village of Millbach (approx 5 miles) turn right at church, go to stop sign, turn right (go approx 1/4 mi) turn left (Legislative Rt 38012) go approx 1 mi to intersection (crossroad) turn right onto Stricklerstown Road, go approx 1/4 mi to 1st farm on the right 2 miles Southwest of Newmanstown

Real Estate: Approx 119 62 acre farm w/approx 4521' road frontage approx 96 acres tillable pasture w/never failing stream 2 story sand stone 5 bay bank barn 2 story implement shed w/corn cribs and 2 2 1/2 story dwellings 6 Rooms & Bath Electric Water Hot Water Heating System E M E Coal Stoker 5 Rooms & 1/2 Bath Electric Water Electric Heat First Floor Full Cement Basement & Covered Cement Porch

For more information on property phone Auctioneer (717)865 5129 or (717)272 7078

Terms 10% Down, Balance within 30 days  
Not Responsible For Accidents

Auctioneers:  
Clayton C. Kleinfelter & Sons,  
AU-000497-L  
105 Chapel St.  
Lebanon, Pa. 17042

Terms & Conditions by  
**ORDER OF ADMINISTRATORS**  
PAULA A. EBERLY  
(717) 949-3653  
CURT W. EBERLY  
(717) 949-6842  
HUGH L. EBERLY  
(215) 589-2011  
Atty. WM. E. SCHADLER