

AUTOS

1979 Passenger Van Hauls 15 passengers, in good condition Reasonable offers will be considered Call Jess 717-397-3571

For Sale 1948 Willys Jeep 4x4, off road use, no title, good condition \$600 717-733-0266

For Sale 1973 Mercedes 220 diesel, 4 door sunroof, reconditioned. \$4,500 Lebanon Co 717-273-6018



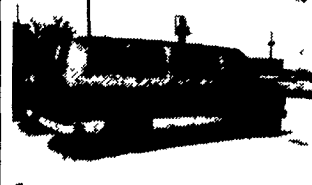
1981 Chev Beaville C30, 12 pass, 350, V8, AT, PS, PB, Dual A/C, Cloth Seats, Radial Tires, 52,000 Miles, Extra Clean **\$7,700**



1984 Ford XL Super 12 pass, 351 V8, AT, PS, PB, Dual A/C & Heat, Radial Tires, 23,000 Miles **\$10,500**



1979 Chev Beaville C20 8 Pass, 305 V8, AT, PS, PB, A/C, Radial Tires Running Boards, Extra Clean 79,000 Miles **\$5,450**



1984 Ford XLT E150, 8 Pass 300 6 Cyl, AT, PS, PB, Dual A/C & Heat, Cruise, Tilt Radial Tires, Cloth Seats, Captain Chairs 48,000 Miles **\$8,950**



1980 Ford Chateau E250 12 Pass, 351 V8, AT, PS, PB, Dual A/C & Heat, Radial Tires, 58,000 Miles **\$6,450**



1983 Ford E350 With 14 Ft Uniglass Body, Roll Up Door, 9700 GVW Dual Wheels, 351 V8, AT, PS, PB, Clean **\$7,550**

FOUR WAY AUTO SALES

Route 23 West
P.O. Box 444, R.D. 3
New Holland, PA 17557
717-354-3199

'81 Chevy heavy duty 3/4 ton pickup, 350 4 spd, PS, PB 8,600 GVW, regular gas \$5,450 '78 Ford F250 3/4 ton pickup, 300 6 cylinder, heavy duty 4 spd, PS, PB, AM-FM w/cap, excellent condition \$3,800 '79 Chevy C30 heavy duty, 3/4 ton pickup, 292 6 cylinder, heavy duty 4 spd, 54,000 miles, 8600 GVW \$3,950 717 733 2873

'81 GMC 1/2 ton, 4x4 pickup, 6 cyl heavy duty 4 spd, PS, PB, AM-FM \$5,900 717 733-2873

'82 Dodge 150 Club Cab pickup, 318 heavy duty 4 spd, PS, PB, AM-FM \$5,700 717 733-2873

'83 Chevy 1/2 ton pickup, 6 cyl, 3 spd, PS, AM-FM, 36,000 miles, excellent condition \$4,950 717-733-2873

'83 Ford F250 3/4 ton, 4x4 pickup, 300 6 cyl, heavy duty 4 spd, PS, PB, AM-FM, lock out hubs, 30,000 miles \$8,750 717-733-2873

'83 Ford XL F350 4x4, 6.9 diesel, 4 spd, PS, PB, flatbed w/gooseneck hookup \$5,900 717-733-2873

'83 GMC 3500, 1 ton truck w/10' stake body, 454 auto, PB, PS, air, 36,000 miles \$6,950 717-733-2873

'84 Chevy Scottsdale C30 dual wheel, cab & chassis, 350 4 spd, PS, PB, 10,000 GVW, 84" cab to axle, excellent condition \$7,600 717-733-2873

'84 Chevy Silverado, heavy duty 3/4 ton pickup, 350 auto, PB, PS, PW, DL, cruise, tilt, air, AM-FM, dual tanks, 8,600 GVW, regular gas \$9,950 717-733-2873

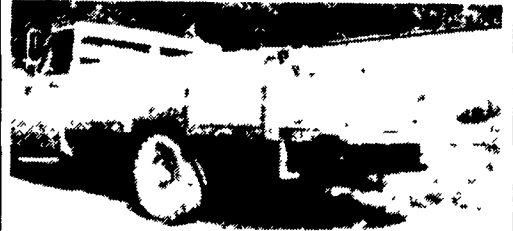
'84 Ford F350 4x4 Crew Cab pickup, 351 4 spd, lock out hubs, PS, PB, dual tanks, AM-FM, 9,200 GVW \$10,500 717-733-2873

SUGAR VALLEY WELDING SHOP

LOGANTON, PA 17747

PH: (717) 725-3882 Between 7 AM And 7:30 AM Only

10% SPECIAL THRU FEBRUARY ON ALL NEW TRAILERS & TRUCK BEDS



ALL TREATED LUMBER ON TRUCK BED. GUARANTEED 30 YEARS. SWING DOWN ENDGATE

WE TRADE IN TRAILERS & SELL USED TRAILERS



CALL FOR BEST PRICES 5th WHEEL-GOOSENECK-HOT SHOT TRAILERS - TANDEM-TRI AXLE-TANDEM-DUAL (Any length & size)

CUSTOM BUILT TRUCK BEDS with hydraulic dump, racks or sideboards, your choice of metal or wood floors and sides.

WE'LL CUSTOM BUILD TO YOUR SPECIFICATIONS!

TRUCKS AND TRAILERS

'79 C70 Chevy, 14 refrigerated box, low mileage \$11,000 717 733-8296

'80 Chevy C30 4x4 w/Koenig utility body, 350 4 spd, PS, PB, lock out hubs, AM-FM, 9,200 GVW, excellent condition \$6,500 717-733-2873

'73 Jeep 3/4 ton truck, 4WD, V8, 3SP, good condition, low mis, w/Myers snowplow and cap, \$2,600 717-458-6374 after 5PM

'70 Chevy rollback, 366 engine, 5+2SP, Maxi brakes, Grove 24' rollback bed, excellent condition \$11,500 Fisher Spray Painters, 667 Hartman Station Rd, Lancaster, PA 17601 717 393-6530

Mark VII - Pickups - Broncos - Bronco II - Stake Body - Crew Cab -

SHEEHY FORD LINCOLN MERCURY INC.

For All Your Farming Transportation Needs Through The F800 Series

BRONCOS DIESEL PICKUPS CHASSIS CAB CARGO VANS 4x4 RANGERS PICKUPS
BRONCO II SUPER CAB CREW CAB STAKE BODY BOX VANS XLT CUSTOM VANS

SHEEHY HOTLINE 717-272-7671

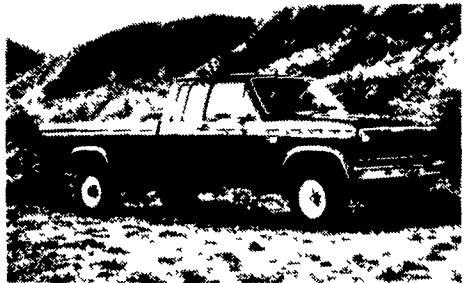
Unless This Emblem Is On Your Car Or Truck You Probably Paid Too Much

SHEEHY LEBANON

9-9 Daily
9-5 Sat.

Parts Dept. Open
Daily 8-5
Sat. 8-12

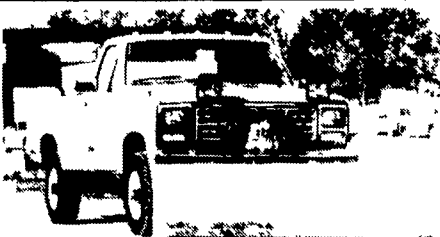
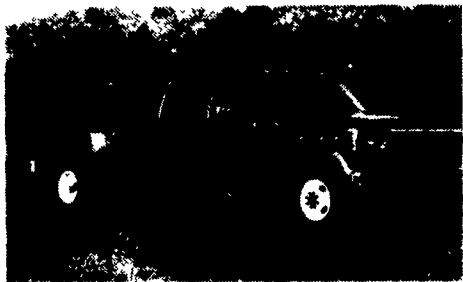
20th & Cumberland St., Lebanon



7.9%

ON F150 4x2 Regular Cab, Super Cab and Rangers (Not Ranger S) 12 - 48 Months SPECIAL RATE EXPIRES FEB. 22, 1986

9.9% APR 49-60 Months



SNOW PLOWS ARRIVING DAILY



7.9%

On Tempo-Topaz and Cougars & T-Birds w/3.8 Engines Up To 42 Months SPECIAL RATE EXPIRES FEB. 22, 1986

9.9% From 43 to 60 Months



Tempo - Cougar - Continental - Town Car - 4x4 - Box Van - Rangers -

Custom Vans - Lynx - Topaz - Diesel Pickups - Mustang - T Bird - Marquis - XLT - Grand Marquis